

# MEDICAL TRANSPORTATION AVIATION

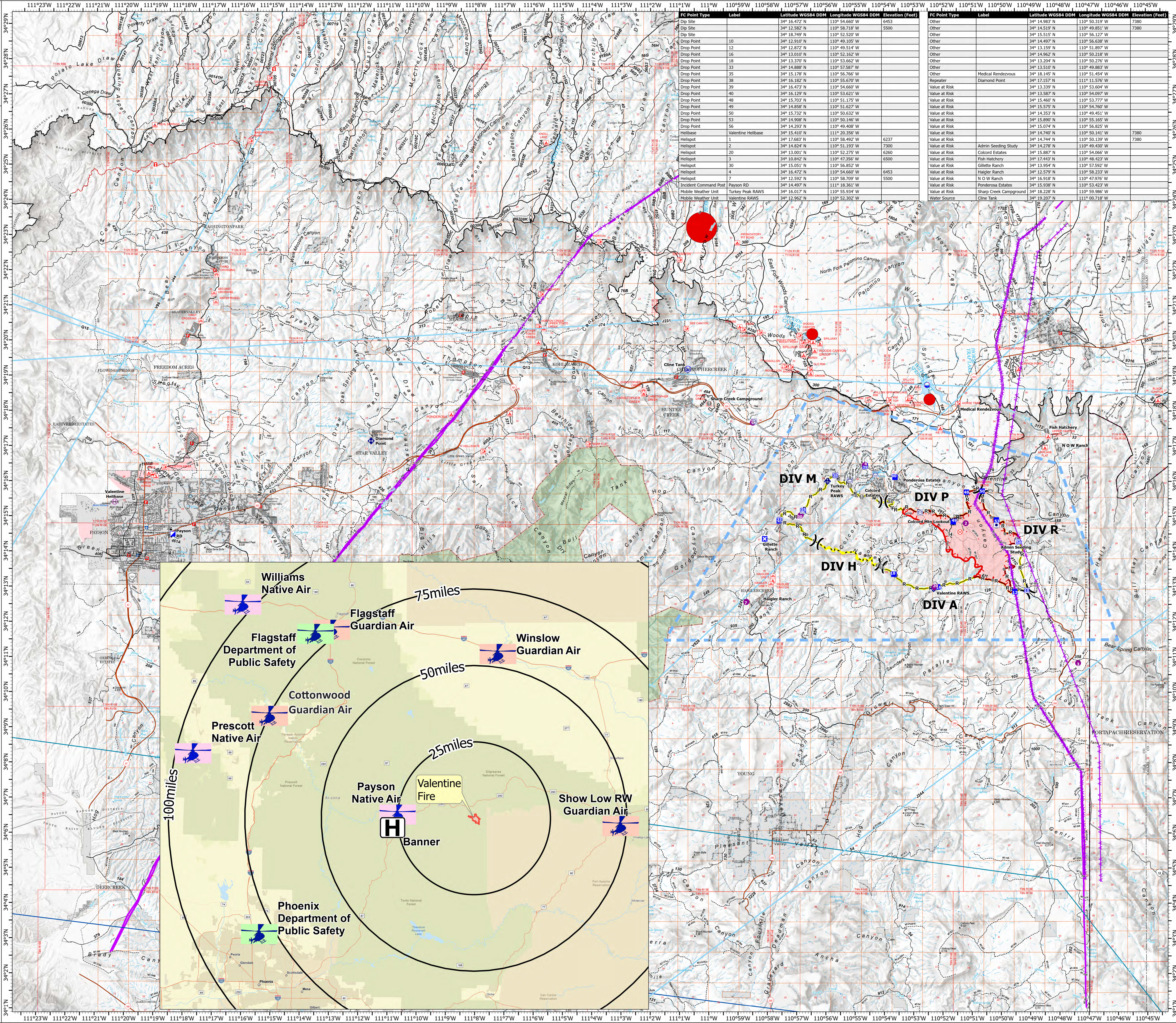
## Valentine Fire

### AZ-TNF-1315

9/15/2023

2,843 acres at 9/14/2023 @ 1600

- Other Property
- Water Tank
- Dip Site
- Helispot
- Helibase
- Incident Command Post
- Drop Point
- Closure
- Lockout
- Fire Origin
- Value at Risk
- Other
- Mobile Weather Unit
- Repeater
- Water Source
- Completed Dozer Line
- Completed Hand Line
- Completed Mixed Construction Line
- Completed Road as Line
- Access or Improved Road
- Fence
- Highlighted Feature
- Other
- Repair Line
- Aerial Hazard
- Temporary Flight Restriction
- Uncontained
- Wildfire Daily Fire Perimeter
- Completed Fireline
- Rim Lakes Aerial Avoidance 2023
- Wilderness
- Secondary Highway
- Road, Unspecified
- Runways
- Non Forest
- Civil Airport w/o Facilities
- Air Traffic Service Route
- Visual Route
- Visual Route Outer Boundary
- Instrument Route Outer Boundary
- Main Power Line



FC Point Type	Label	Latitude WGS84 DDM	Longitude WGS84 DDM	Elevation (Feet)
Drop Site		34° 12.582' N	110° 58.718' W	5500
Dip Site		34° 18.749' N	110° 52.520' W	
Drop Point	10	34° 12.910' N	110° 49.105' W	
Drop Point	12	34° 12.872' N	110° 49.514' W	
Drop Point	16	34° 13.010' N	110° 52.162' W	
Drop Point	18	34° 13.370' N	110° 53.660' W	
Drop Point	33	34° 14.888' N	110° 57.887' W	
Drop Point	35	34° 15.178' N	110° 56.766' W	
Drop Point	38	34° 16.182' N	110° 55.670' W	
Drop Point	39	34° 16.473' N	110° 54.660' W	
Drop Point	40	34° 16.129' N	110° 53.621' W	
Drop Point	48	34° 15.703' N	110° 51.715' W	
Drop Point	49	34° 14.858' N	110° 51.627' W	
Drop Point	50	34° 15.732' N	110° 50.632' W	
Drop Point	53	34° 14.908' N	110° 50.146' W	
Drop Point	56	34° 14.293' N	110° 49.408' W	
Helibase	Valentine Helibase	34° 15.410' N	111° 20.356' W	
Helispot	1	34° 15.972' N	110° 54.660' W	6237
Helispot	2	34° 14.824' N	110° 51.193' W	7300
Helispot	20	34° 13.001' N	110° 52.275' W	6260
Helispot	3	34° 10.842' N	110° 47.356' W	6500
Helispot	30	34° 15.051' N	110° 56.852' W	
Helispot	4	34° 16.472' N	110° 54.660' W	6453
Helispot	7	34° 12.592' N	110° 58.709' W	5500
Incident Command Post	Payson RD	34° 14.407' N	111° 18.361' W	
Mobile Weather Unit	Turkey Peak RAWS	34° 16.017' N	110° 55.934' W	
Mobile Weather Unit	Valentine RAWS	34° 12.962' N	110° 52.302' W	

FC Point Type	Label	Latitude WGS84 DDM	Longitude WGS84 DDM	Elevation (Feet)
Other		34° 14.603' N	110° 50.219' W	7380
Other		34° 14.519' N	110° 49.851' W	7380
Other		34° 15.515' N	110° 56.127' W	
Other		34° 14.497' N	110° 56.638' W	
Other		34° 13.159' N	110° 51.897' W	
Other		34° 14.962' N	110° 50.218' W	
Other		34° 13.204' N	110° 50.276' W	
Other		34° 15.510' N	110° 49.882' W	
Other		34° 18.145' N	110° 51.454' W	
Repeater	Medical Rendezvous	34° 17.157' N	111° 11.576' W	
Value at Risk	Diamond Point	34° 13.339' N	110° 53.604' W	
Value at Risk		34° 13.587' N	110° 54.097' W	
Value at Risk		34° 15.460' N	110° 53.777' W	
Value at Risk		34° 15.275' N	110° 54.768' W	
Value at Risk		34° 14.353' N	110° 49.451' W	
Value at Risk		34° 15.890' N	110° 55.165' W	
Value at Risk		34° 15.074' N	110° 56.825' W	
Value at Risk		34° 14.740' N	110° 50.141' W	7380
Value at Risk		34° 14.744' N	110° 50.139' W	7380
Value at Risk	Admin Seeding Study	34° 14.276' N	110° 49.280' W	
Value at Risk	Colcord Estates	34° 15.887' N	110° 54.066' W	
Value at Risk	Fish Hatchery	34° 17.443' N	110° 48.423' W	
Value at Risk	Gillette Ranch	34° 13.954' N	110° 57.592' W	
Value at Risk	Hagler Ranch	34° 12.579' N	110° 58.233' W	
Value at Risk	N O W Ranch	34° 16.918' N	110° 47.976' W	
Value at Risk	Ponderosa Estates	34° 15.936' N	110° 53.823' W	
Value at Risk	Sharp Creek Campground	34° 18.226' N	110° 59.986' W	
Water Source	Cline Tank	34° 19.207' N	111° 00.718' W	

