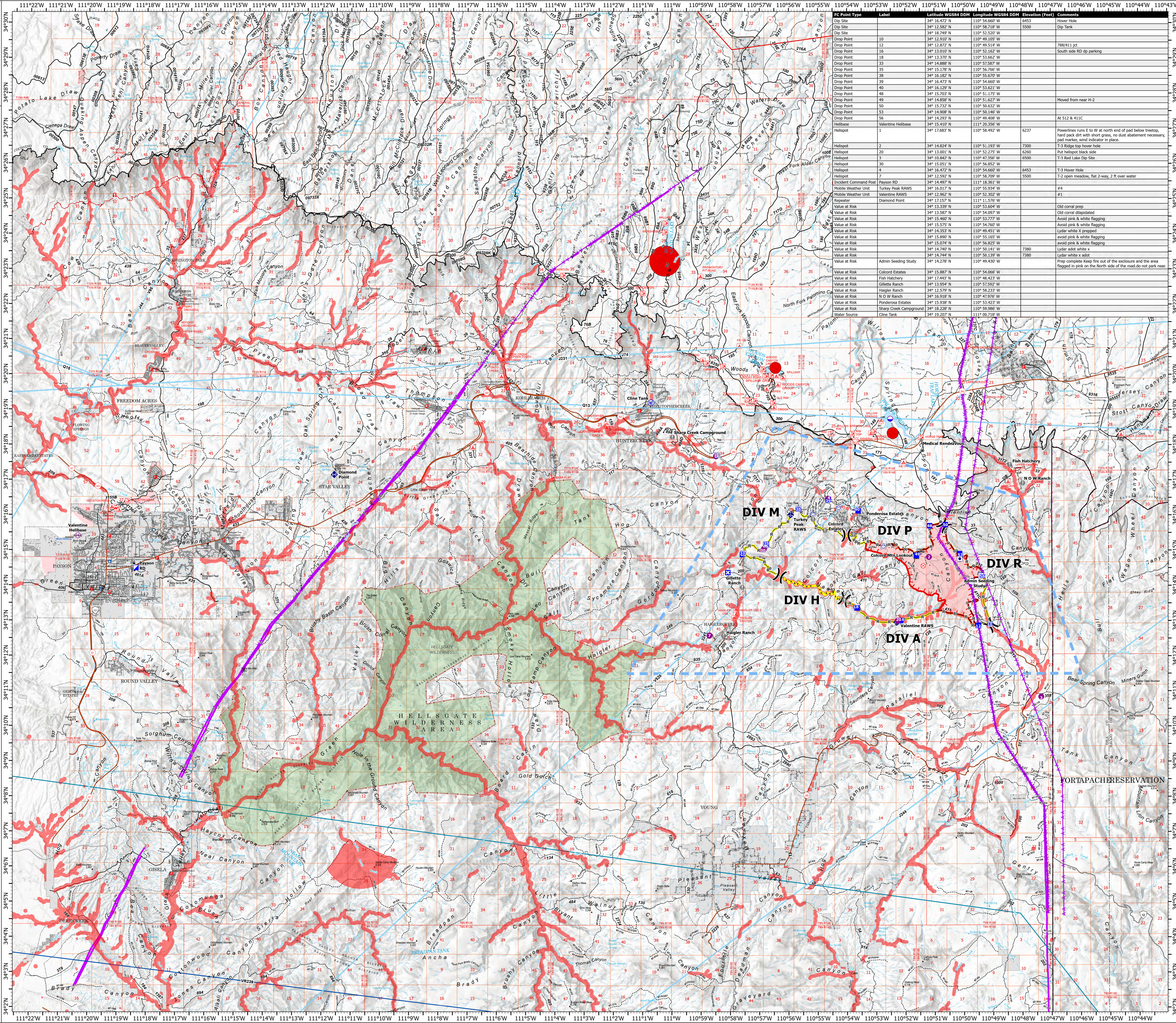


# AIR OPERATIONS

Valentine Fire  
AZ-TNF-1315  
9/16/2023

2,881 acres at 9/15/2023 @ 1600

- Water Property
- Water Tank
- Dip Site
- Helispot
- Helibase
- Division Break
- Incident Command Post
- Drop Point
- Closure
- Lookout
- Fire Origin
- Value at Risk
- Other
- Mobile Weather Unit
- Repeater
- Water Source
- Completed Dozer Line
- Completed Hand Line
- Completed Mixed Construction Line
- Completed Road as Line
- Access or Improved Road
- Fence
- Highlighted Feature
- Other
- Repair Line
- Aerial Hazard
- Temporary Flight Restriction
- Uncontained
- Wildfire Daily Fire Perimeter
- Fire Containment Line
- Rim Lakes Aerial Avoidance 2023
- Aerial Fire Retardant Avoidance Area
- Wilderness
- Campground
- Picnic Site
- Trailhead
- Horse Camp
- Interpretive Visitor Center
- Forest Service
- Cemetery
- City / Town Hall
- School (K - 12)
- College / University
- Post Office
- Fire Station / EMS Station
- Hospital / Medical Center
- Law Enforcement
- Court House; State Capitol; US Capitol
- Secondary Highway
- Road, Unspecified
- Trail
- Runways
- USFS Proclaimed Forest Grassland
- USFS Administrative Forest
- USFS Ranger District
- USFS Wilderness
- State Conservation Area
- Nonrathen Shore
- Artificial Path
- Pipeline/Underground
- Stream/River
- Stream/River Intermittent
- Dam / Weir
- Wash
- Lake / Pond
- Lake / Pond (Intermittent)
- Reservoir
- PLSS Township
- PLSS Section
- Non Forest
- BIA Tribal Land
- Urban Area
- Civil Airport w/o Facilities
- Air Traffic Service Route
- Visual Route
- Visual Route Outer Boundary
- Instrument Route Outer Boundary
- Main Power Line



IC Point Type	Label	Latitude WGS84 DDM	Longitude WGS84 DDM	Elevation (Feet)	Comments
Dip Site	1	34° 15.872' N	110° 58.718' W	4453	Flower Hole
Dip Site	2	34° 18.749' N	110° 52.520' W	5500	Dip Tank
Drop Point	10	34° 12.910' N	110° 49.105' W		
Drop Point	12	34° 12.872' N	110° 49.514' W		788/411 jet
Drop Point	16	34° 13.010' N	110° 52.362' W		South side RD dp parking
Drop Point	18	34° 13.370' N	110° 53.662' W		
Drop Point	33	34° 14.888' N	110° 57.587' W		
Drop Point	35	34° 15.178' N	110° 56.666' W		
Drop Point	38	34° 15.827' N	110° 55.709' W		
Drop Point	39	34° 16.473' N	110° 54.669' W		
Drop Point	40	34° 16.129' N	110° 53.621' W		
Drop Point	48	34° 15.703' N	110° 51.175' W		
Drop Point	49	34° 14.858' N	110° 51.627' W		Moved from near H-2
Drop Point	50	34° 15.712' N	110° 50.312' W		
Drop Point	53	34° 14.908' N	110° 50.146' W		At 512 & 411C
Drop Point	56	34° 14.293' N	110° 49.408' W		
Helibase	Valentine Helibase	34° 15.410' N	110° 20.356' W	6237	
Helispot	1	34° 17.683' N	110° 58.492' W		
Helispot	2	34° 14.824' N	110° 51.193' W	7300	Powerlines runs E to W at north end of pad below trestop, hard pack dirt with short grass, no dust abatement necessary, pad marker, wind indicator in place.
Helispot	20	34° 13.001' N	110° 52.275' W	6260	Put Helispot black side
Helispot	3	34° 10.842' N	110° 47.356' W	6500	T-3 Red Lake Dip Site
Helispot	30	34° 15.051' N	110° 56.852' W		
Helispot	4	34° 18.472' N	110° 54.660' W	6453	T-3 Hover Hole
Helispot	7	34° 12.872' N	110° 58.709' W	5500	T-2 open meadow, flat 2-way, 2 ft over water
Incident Command Post	Payson RD	34° 14.907' N	111° 18.361' W		
Repeater	Turkey Peak RAWS	34° 16.017' N	110° 55.934' W		#4
Mobile Weather Unit	Valentine RAWS	34° 12.962' N	110° 52.302' W		#1
Repeater	Payson	34° 12.717' N	111° 11.776' W		
Value at Risk	110° 53.624' W				Old coral prep
Value at Risk	110° 54.097' W				Old coral dislabeled
Value at Risk	110° 53.777' W				Avoid pink & white flagging
Value at Risk	110° 54.760' W				Avoid pink & white flagging
Value at Risk	110° 49.811' W				Lidar white x prep
Value at Risk	110° 55.165' W				avoid pink & white flagging
Value at Risk	110° 56.825' W				avoid pink & white flagging
Value at Risk	110° 50.141' W				Lidar add white x
Value at Risk	110° 50.139' W				Lidar white x add
Value at Risk	110° 49.430' W				7380
Value at Risk	110° 49.430' W				7380
Value at Risk	110° 49.430' W				Prep complete keep fire out of the enclosure and the area flagged in pink on the North side of the road do not park near
Value at Risk	110° 54.666' W				Colford Estates
Value at Risk	110° 48.423' W				Fish Hatchery
Value at Risk	110° 57.592' W				Gillette Ranch
Value at Risk	110° 57.592' W				Gillette Ranch
Value at Risk	110° 58.233' W				Haigler Ranch
Value at Risk	110° 47.976' W				N O W Ranch
Value at Risk	110° 53.423' W				Ponderosa Estates
Value at Risk	110° 59.869' W				Sharp Creek Campground
Water Source	Cline Tank	34° 19.207' N	111° 00.718' W		



Miles  
0 1 2 4

Kilometers  
0 1 2 4

