

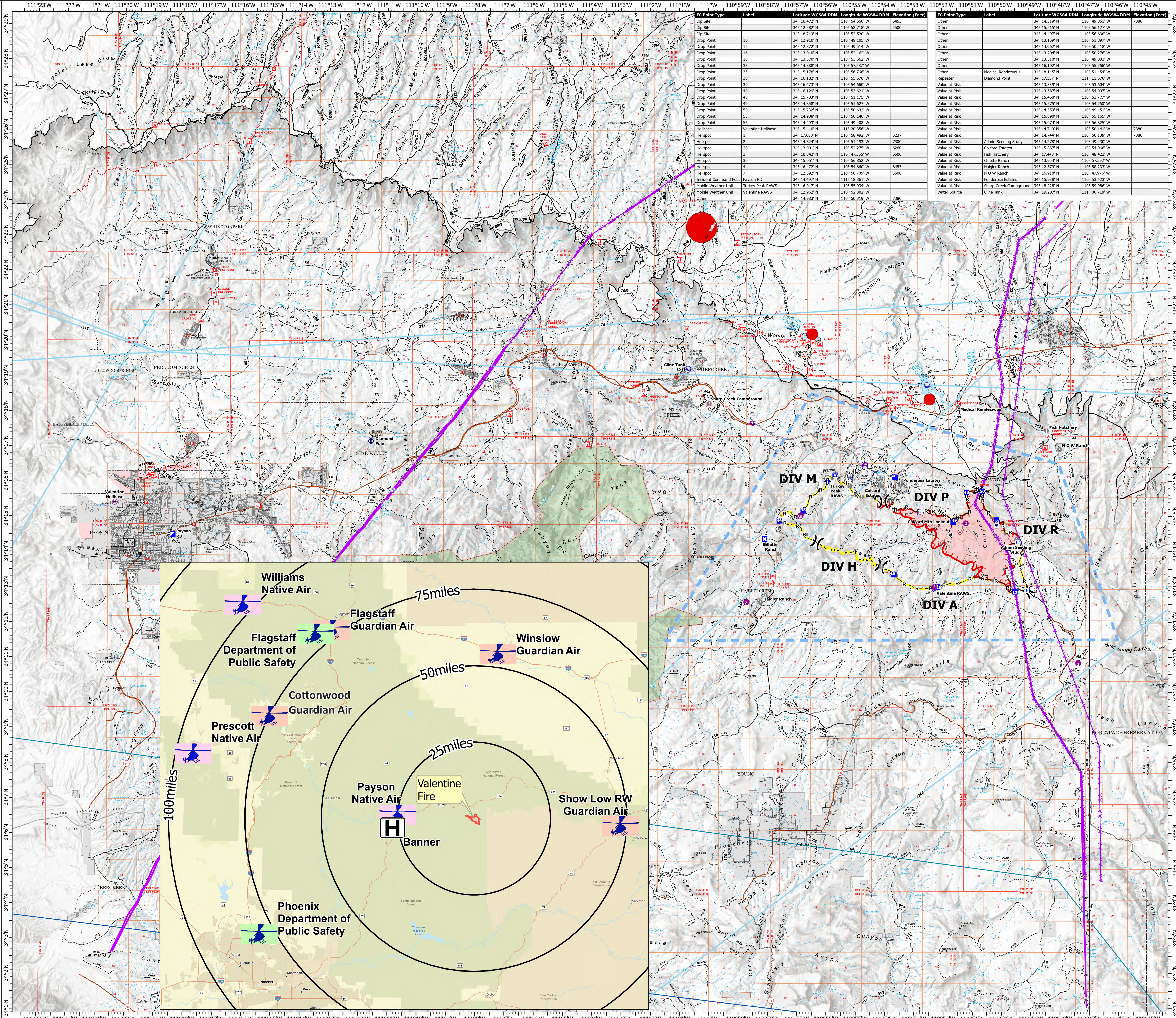
# MEDICAL TRANSPORTATION AVIATION

## Valentine Fire AZ-TNF-1315

### 9/17/2023

3,242 acres at 9/16/2023 @ 1800

- Other Property
- Water Tank
- Dip Site
- Helispot
- Helibase
- Division Break
- Incident Command Post
- Drop Point
- Closure
- Lookout
- Fire Origin
- Value at Risk
- Mobile Weather Unit
- Repeater
- Water Source
- Completed Dozer Line
- Completed Hand Line
- Completed Mixed Construction Line
- Completed Road as Line
- Access or Improved Road
- Fence
- Highlighted Feature
- Other
- Repair Line
- Aerial Hazard
- Temporary Flight Restriction
- Uncontained
- Wildfire Daily Fire Perimeter
- Completed Fireline
- Rim Lakes Aerial Avoidance 2023
- Wilderness
- Secondary Highway
- Road, Unspecified
- Runways
- Non Forest
- Civil Airport w/o Facilities
- Air Traffic Service Route
- Visual Route
- Visual Route Outer Boundary
- Instrument Route Outer Boundary
- Main Power Line



FC Point Type	Label	Latitude WGS84 DDM	Longitude WGS84 DDM	Elevation (Feet)
Drop Site		34° 18.582' N	110° 52.216' W	5500
Dip Site		34° 18.749' N	110° 52.620' W	
Drop Point	10	34° 12.910' N	110° 49.105' W	
Drop Point	12	34° 18.872' N	110° 49.514' W	
Drop Point	16	34° 13.010' N	110° 53.867' W	
Drop Point	18	34° 13.370' N	110° 53.867' W	
Drop Point	33	34° 15.888' N	110° 57.587' W	
Drop Point	35	34° 15.178' N	110° 56.766' W	
Drop Point	38	34° 16.187' N	110° 55.670' W	
Drop Point	39	34° 14.473' N	110° 54.667' W	
Drop Point	40	34° 15.021' N	110° 53.821' W	
Drop Point	48	34° 15.703' N	110° 51.175' W	
Drop Point	49	34° 14.858' N	110° 51.627' W	
Drop Point	50	34° 15.732' N	110° 50.632' W	
Drop Point	53	34° 14.900' N	110° 50.146' W	
Drop Point	56	34° 14.281' N	110° 49.408' W	
Helibase	Valentine Helibase	34° 15.410' N	110° 20.356' W	
Helispot	1	34° 17.683' N	110° 58.492' W	6237
Helispot	2	34° 14.824' N	110° 51.193' W	7300
Helispot	20	34° 13.001' N	110° 52.275' W	6260
Helispot	3	34° 13.010' N	110° 47.356' W	6500
Helispot	30	34° 15.051' N	110° 56.821' W	
Helispot	4	34° 14.472' N	110° 54.666' W	6453
Helispot	7	34° 16.592' N	110° 58.709' W	5500
Incident Command Post	Payson RD	34° 14.497' N	111° 18.361' W	
Mobile Weather Unit	Turkey Peak RAWs	34° 15.017' N	110° 55.934' W	
Mobile Weather Unit	Valentine RAWs	34° 15.962' N	110° 52.902' W	
Other		34° 14.983' N	110° 50.319' W	7380

FC Point Type	Label	Latitude WGS84 DDM	Longitude WGS84 DDM	Elevation (Feet)
Other		34° 15.515' N	110° 56.127' W	7380
Other		34° 14.497' N	110° 56.638' W	
Other		34° 13.159' N	110° 51.897' W	
Other		34° 14.962' N	110° 50.218' W	
Other		34° 13.204' N	110° 50.276' W	
Other		34° 13.510' N	110° 49.983' W	
Other		34° 16.102' N	110° 55.766' W	
Other		34° 18.145' N	110° 51.454' W	
Repeater		34° 17.157' N	111° 11.576' W	
Value at Risk		34° 13.339' N	110° 53.604' W	
Value at Risk		34° 13.887' N	110° 54.097' W	
Value at Risk		34° 15.460' N	110° 53.777' W	
Value at Risk		34° 15.575' N	110° 54.760' W	
Value at Risk		34° 14.353' N	110° 49.451' W	
Value at Risk		34° 15.890' N	110° 55.165' W	
Value at Risk		34° 13.507' N	110° 54.025' W	
Value at Risk		34° 14.740' N	110° 50.141' W	7380
Value at Risk		34° 14.744' N	110° 50.139' W	7380
Value at Risk		34° 14.278' N	110° 49.430' W	
Value at Risk		34° 15.887' N	110° 54.066' W	
Value at Risk		34° 17.443' N	110° 52.745' W	
Value at Risk		34° 13.954' N	110° 57.592' W	
Value at Risk		34° 12.579' N	110° 58.233' W	
Value at Risk		34° 16.918' N	110° 47.976' W	
Value at Risk		34° 15.938' N	110° 53.423' W	
Value at Risk		34° 18.228' N	110° 59.986' W	
Water Source		34° 19.307' N	111° 00.718' W	

