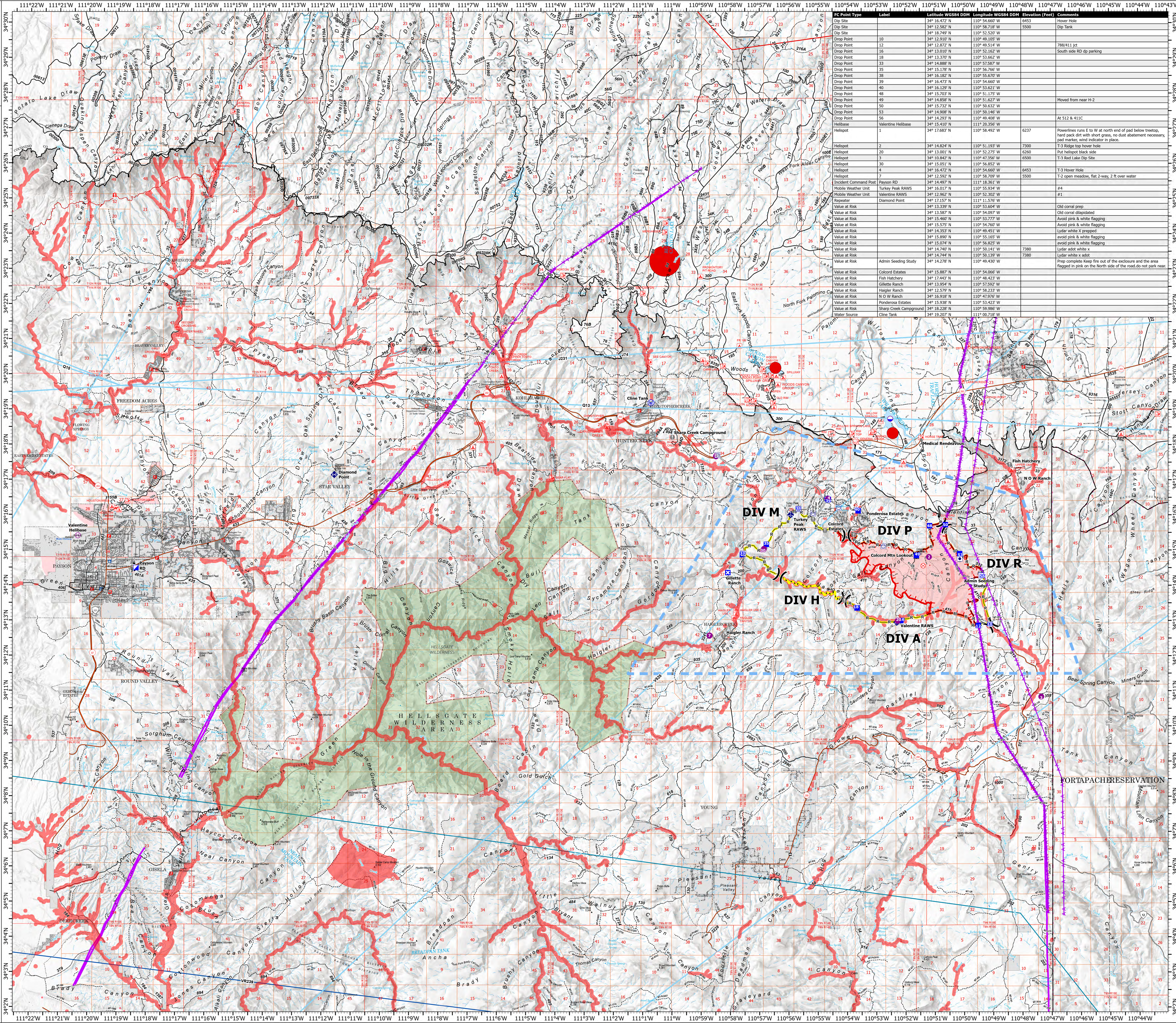


# AIR OPERATIONS

Valentine Fire  
AZ-TNF-1315  
9/18/2023

3,996 acres at 9/17/2023 @ 1800

- Water Property
- Water Tank
- Dip Site
- Helispot
- Helibase
- Division Break
- Incident Command Post
- Drop Point
- Closure
- Lookout
- Fire Origin
- Value at Risk
- Other
- Mobile Weather Unit
- Repeater
- Water Source
- Completed Dozer Line
- Completed Hand Line
- Completed Mixed Construction Line
- Completed Road as Line
- Access or Improved Road
- Fence
- Highlighted Feature
- Other
- Repair Line
- Aerial Hazard
- Temporary Flight Restriction
- Uncontained
- Wildfire Daily Fire Perimeter
- Fire Containment Line
- Rim Lakes Aerial Avoidance 2023
- Aerial Fire Retardant Avoidance Area
- Wilderness
- Campground
- Picnic Site
- Trailhead
- Horse Camp
- Interpretive Visitor Center
- Forest Service
- Cemetery
- City / Town Hall
- School (K - 12)
- College / University
- Post Office
- Fire Station / EMS Station
- Hospital / Medical Center
- Law Enforcement
- Court House; State Capitol; US Capitol
- Secondary Highway
- Road, Unspecified
- Trail
- Runways
- USFS Proclaimed Forest Grassland
- USFS Administrative Forest
- USFS Ranger District
- USFS Wilderness
- State Conservation Area
- Nonrathen Shore
- Artificial Path
- Pipeline/Underground
- Stream/River
- Stream/River Intermittent
- Dam / Weir
- Wash
- Lake / Pond
- Lake / Pond (Intermittent)
- Reservoir
- PLSS Township
- PLSS Section
- Non Forest
- BIA Tribal Land
- Urban Area
- Civil Airport w/o Facilities
- Air Traffic Service Route
- Visual Route
- Visual Route Outer Boundary
- Instrument Route Outer Boundary
- Main Power Line



IC Point Type	Label	Latitude WGS84 DDM	Longitude WGS84 DDM	Elevation (Feet)	Comments	
Dip Site	Dip Site	34° 12.582' N	110° 58.718' W	4453	Flower Hole	
Dip Site	Dip Site	34° 18.749' N	110° 52.520' W	5500	Dip Tank	
Drop Point	Drop Point	34° 12.910' N	110° 49.105' W			
Drop Point	Drop Point	34° 12.872' N	110° 49.514' W		788/411 jet	
Drop Point	Drop Point	34° 13.010' N	110° 52.342' W		South side RD dp parking	
Drop Point	Drop Point	34° 13.370' N	110° 53.662' W			
Drop Point	Drop Point	34° 14.888' N	110° 57.587' W			
Drop Point	Drop Point	34° 15.178' N	110° 56.666' W			
Drop Point	Drop Point	34° 15.582' N	110° 55.700' W			
Drop Point	Drop Point	34° 16.473' N	110° 54.660' W			
Drop Point	Drop Point	34° 16.129' N	110° 53.621' W			
Drop Point	Drop Point	34° 15.703' N	110° 51.175' W			
Drop Point	Drop Point	34° 14.858' N	110° 51.627' W		Moved from near H-2	
Drop Point	Drop Point	34° 15.712' N	110° 50.312' W			
Drop Point	Drop Point	34° 14.908' N	110° 50.146' W		At 512 & 411C	
Drop Point	Drop Point	34° 14.293' N	110° 49.408' W			
Helibase	Valentine Helibase	34° 15.410' N	110° 20.356' W			
Helispot	Helispot	34° 17.683' N	110° 58.492' W	6237		
Helispot	Helispot	2	34° 14.824' N	110° 51.193' W	7300	Powerlines runs E to W at north end of pad below trestle, hard pack dirt with short grass, no dust abatement necessary, pad marker, wind indicator in place.
Helispot	Helispot	20	34° 13.001' N	110° 52.275' W	6260	Put Helispot black side
Helispot	Helispot	3	34° 10.842' N	110° 47.356' W	6500	T-3 Red Lake Dip Site
Helispot	Helispot	30	34° 15.051' N	110° 56.852' W		
Helispot	Helispot	4	34° 18.472' N	110° 54.660' W	6453	T-3 Hover Hole
Helispot	Helispot	7	34° 12.872' N	110° 58.700' W	5500	T-2 open meadow, flat 2-way, 2 ft over water
Incident Command Post	Payson RD	34° 14.907' N	111° 18.361' W			
Repeater	Turkey Peak RAWs	34° 16.017' N	110° 55.934' W		#4	
Mobile Weather Unit	Valentine RAWs	34° 12.962' N	110° 52.302' W		#1	
Repeater	Repeater	34° 12.717' N	111° 11.776' W			
Value at Risk	Value at Risk	34° 13.339' N	110° 53.624' W		Old coral prep	
Value at Risk	Value at Risk	34° 13.587' N	110° 54.097' W		Old coral dislodge	
Value at Risk	Value at Risk	34° 15.460' N	110° 53.777' W		Avoid pink & white flagging	
Value at Risk	Value at Risk	34° 15.375' N	110° 54.760' W		Avoid pink & white flagging	
Value at Risk	Value at Risk	34° 15.352' N	110° 49.811' W		Lidar white x prep	
Value at Risk	Value at Risk	34° 15.890' N	110° 55.165' W		avoid pink & white flagging	
Value at Risk	Value at Risk	34° 15.074' N	110° 56.825' W		avoid pink & white flagging	
Value at Risk	Value at Risk	34° 14.740' N	110° 50.141' W	7380	Lidar add white x	
Value at Risk	Value at Risk	34° 14.274' N	110° 50.139' W	7380	Lidar white x add	
Value at Risk	Value at Risk	34° 14.278' N	110° 49.430' W		Prep complete keep fire out of the enclosure and the area flagged in pink on the North side of the road do not park near	
Value at Risk	Colcord Estates	34° 15.887' N	110° 54.666' W			
Value at Risk	Fish Hatchery	34° 17.427' N	110° 48.423' W			
Value at Risk	Value at Risk	34° 13.954' N	110° 57.592' W			
Value at Risk	Value at Risk	34° 12.579' N	110° 58.233' W			
Value at Risk	Value at Risk	34° 16.918' N	110° 47.976' W			
Value at Risk	Value at Risk	34° 15.938' N	110° 53.423' W			
Value at Risk	Value at Risk	34° 18.208' N	110° 59.869' W			
Water Source	Cline Tank	34° 19.207' N	111° 00.718' W			



Miles  
0 1 2 4

Kilometers  
0 1 2 4



1:60,000 - Tonto GIs - 9/17/2023 1941  
Acres from IR and GPS  
North American 1983 Datum, LatLong Grid