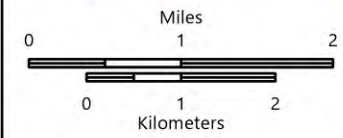


# PILOT

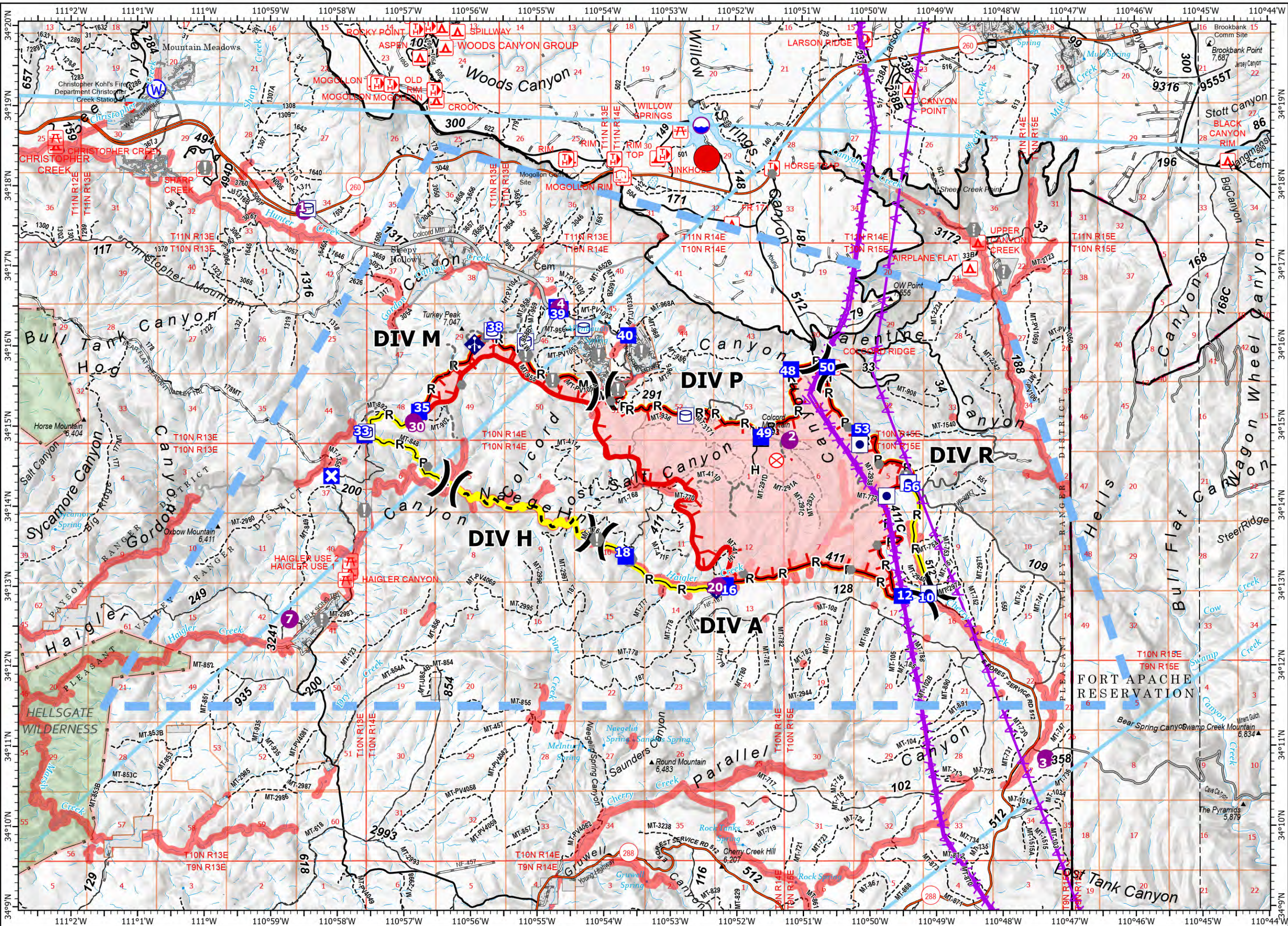
Valentine Fire  
AZ-TNF-1315  
9/20/2023

5,300 acres at 9/19/2023 @ 1800

- Other Property
- Water Tank
- Dip Site
- Helispot
- Division Break
- Drop Point
- Closure
- Lookout
- Fire Origin
- Value at Risk
- Other
- Mobile Weather Unit
- Water Source
- Completed Dozer Line
- Completed Hand Line
- Completed Mixed Construction Line
- Completed Road as Line
- Access or Improved Road
- Fence
- Highlighted Feature
- Other
- Repair Line
- Aerial Hazard
- Temporary Flight Restriction
- Uncontained
- Wildfire Daily Fire Perimeter
- Fire Containment Line
- Rim Lakes Aerial Avoidance 2023
- Aerial Fire Retardant Avoidance Area
- Wilderness
- Secondary Highway
- Road, Unspecified
- Trail
- USFS Proclaimed Forest Grassland
- USFS Administrative Forest
- USFS Ranger District
- PLSS Township
- PLSS Section
- Non Forest
- Air Traffic Service Route



1:80,000 - Tonto GIS - 9/19/2023 1846  
Acres from IR and GPS  
North American 1983 Datum, Lat/Long Grid



# Valentine Fire AZ-TNF-1315 - Air Operations Point Locations

FC Point Type	Label	Latitude WGS84 DDM	Longitude WGS84 DDM	Elevation (Feet)	Comments
Dip Site		34° 16.472' N	110° 54.660' W	6453	Hover Hole
Dip Site		34° 12.582' N	110° 58.718' W	5500	Dip Tank
Dip Site		34° 18.749' N	110° 52.520' W		
Drop Point	10	34° 12.910' N	110° 49.105' W		
Drop Point	12	34° 12.872' N	110° 49.514' W		788/411 jct
Drop Point	16	34° 13.010' N	110° 52.162' W		South side RD dp parking
Drop Point	18	34° 13.370' N	110° 53.662' W		
Drop Point	33	34° 14.888' N	110° 57.587' W		
Drop Point	35	34° 15.178' N	110° 56.766' W		
Drop Point	38	34° 16.182' N	110° 55.670' W		
Drop Point	39	34° 16.473' N	110° 54.660' W		
Drop Point	40	34° 16.129' N	110° 53.621' W		
Drop Point	48	34° 15.703' N	110° 51.175' W		
Drop Point	49	34° 14.858' N	110° 51.627' W		Moved from near H-2
Drop Point	50	34° 15.732' N	110° 50.632' W		
Drop Point	53	34° 14.908' N	110° 50.146' W		
Drop Point	56	34° 14.293' N	110° 49.408' W		At 512 & 411C
Fire Origin		34° 14.567' N	110° 51.396' W		
Helibase	Valentine Helibase	34° 15.410' N	111° 20.356' W		
Helispot	1	34° 17.683' N	110° 58.492' W	6237	Powerlines runs E to W at north end of pad below treetop, hard pack dirt with short grass, no dust abatement necessary, pad marker, wind indicator in place.
Helispot	2	34° 14.824' N	110° 51.193' W	7300	T-3 Ridge top hover hole
Helispot	20	34° 13.001' N	110° 52.275' W	6260	Put helispot black side
Helispot	3	34° 10.842' N	110° 47.356' W	6500	T-3 Red Lake Dip Site
Helispot	30	34° 15.051' N	110° 56.852' W		
Helispot	4	34° 16.472' N	110° 54.660' W	6453	T-3 Hover Hole
Helispot	7	34° 12.592' N	110° 58.709' W	5500	T-2 open meadow, flat 2-way, 2 ft over water
Incident Command Post	Payson RD	34° 14.497' N	111° 18.361' W		
Lookout	Colcord Mtn Lookout	34° 14.838' N	110° 51.630' W		
Mobile Weather Unit	Turkey Peak RAWS	34° 16.017' N	110° 55.934' W		#4
Mobile Weather Unit	Valentine RAWS	34° 12.962' N	110° 52.302' W		#1
Other		34° 14.983' N	110° 50.319' W	7380	#1 lydar Adot x white
Other		34° 14.519' N	110° 49.851' W	7380	#2 lydar adot x white
Other		34° 15.515' N	110° 56.127' W		forest service drinker
Other		34° 14.497' N	110° 56.638' W		avoid pink & white flagging
Other		34° 13.159' N	110° 51.897' W		Wildlife drinker
Other		34° 14.962' N	110° 50.218' W		Fobs point of interest
Other		34° 13.204' N	110° 50.276' W		Fobs point of interest
Other		34° 13.510' N	110° 49.883' W		Fobs interest point
Other		34° 16.102' N	110° 55.766' W		Photo-point- Turkey 1
Other		34° 16.420' N	110° 54.708' W		temp point for FOBS to install a photopoint. Can be deleted when they're done with it.
Other		34° 15.315' N	110° 53.884' W		Escobaria vivipara
Other	Medical Rendezvous	34° 18.145' N	110° 51.454' W		Medical Rendezvous Point
Repeater	Diamond Point	34° 17.157' N	111° 11.576' W		
Value at Risk		34° 13.339' N	110° 53.604' W		Old corral prep
Value at Risk		34° 13.587' N	110° 54.097' W		Old corral dilapidated
Value at Risk		34° 15.460' N	110° 53.777' W		Avoid pink & white flagging
Value at Risk		34° 15.575' N	110° 54.760' W		Avoid pink & white flagging
Value at Risk		34° 14.353' N	110° 49.451' W		Lydar white X prepped
Value at Risk		34° 15.890' N	110° 55.165' W		avoid pink & white flagging
Value at Risk		34° 15.074' N	110° 56.825' W		avoid pink & white flagging
Value at Risk		34° 14.740' N	110° 50.141' W	7380	Lydar adot white x
Value at Risk		34° 14.744' N	110° 50.139' W	7380	Lydar white x adot
Value at Risk	Admin Seeding Study	34° 14.278' N	110° 49.430' W		Prep complete Keep fire out of the enclosure and the area flagged in pink on the North side of the road.do not park near.
Value at Risk	Colcord Estates	34° 15.887' N	110° 54.066' W		
Value at Risk	Fish Hatchery	34° 17.443' N	110° 48.423' W		
Value at Risk	Gillette Ranch	34° 13.954' N	110° 57.592' W		
Value at Risk	Haigler Ranch	34° 12.579' N	110° 58.233' W		
Value at Risk	N O W Ranch	34° 16.918' N	110° 47.976' W		
Value at Risk	Ponderosa Estates	34° 15.938' N	110° 53.423' W		
Value at Risk	Sharp Creek Campground	34° 18.228' N	110° 59.986' W		
Water Source	Cline Tank	34° 19.207' N	111° 00.718' W		