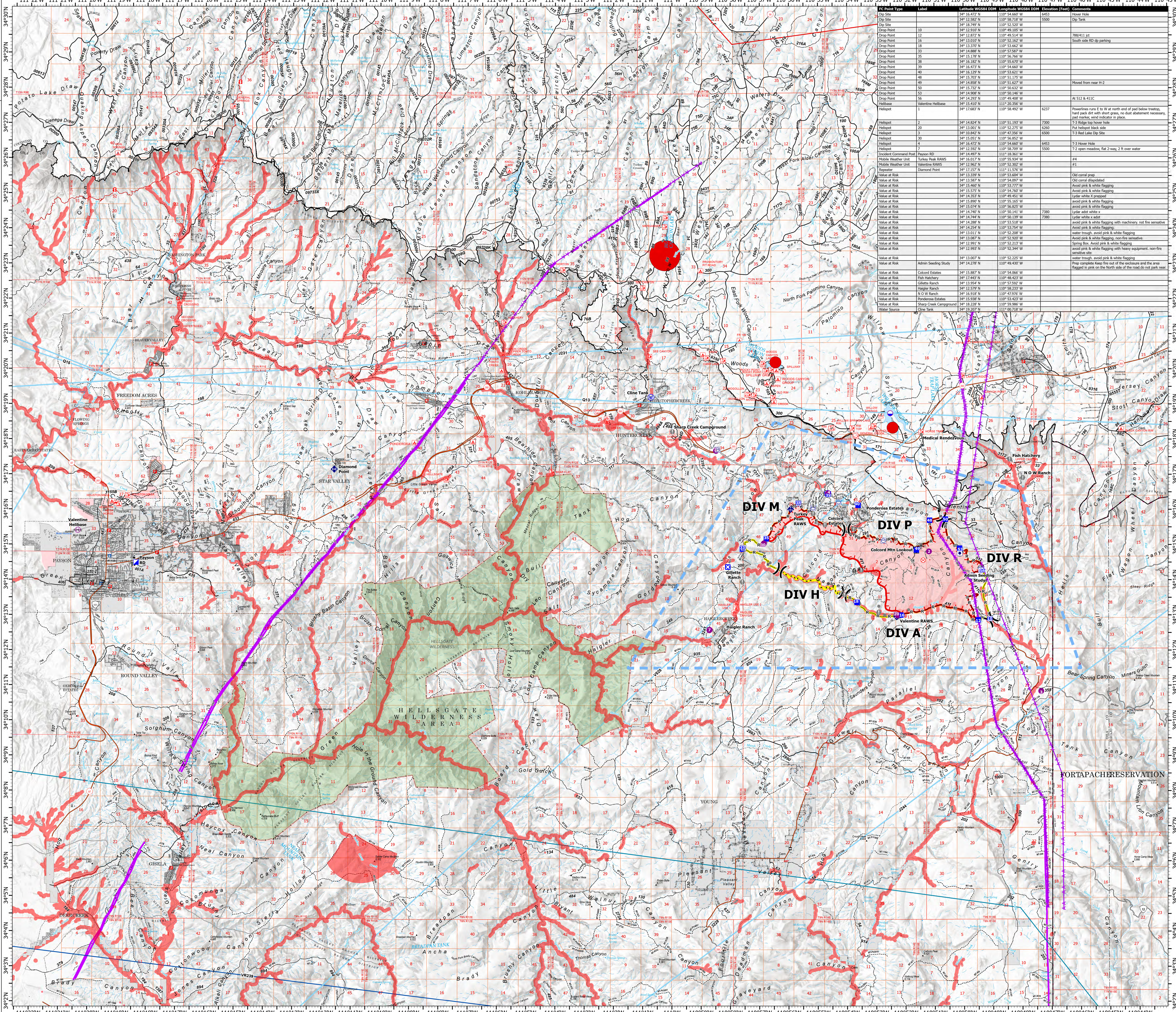


AIR OPERATIONS


Valentine Fire
AZ-TNF-1315
9/21/2023

5,626 acres at 9/20/2023 @ 1800

- Other Property
- Water Tank
- Dip Site
- Helispot
- Helibase
- Division Break
- Incident Command Post
- Drop Point
- Closure
- Lookout
- Fire Origin
- Value at Risk
- Other
- Mobile Weather Unit
- Repeater
- Water Source
- Completed Dozer Line
- Completed Hand Line
- Completed Mixed Construction Line
- Completed Road as Line
- Access or Improved Road
- Fence
- Highlighted Feature
- Other
- Repair Line
- Aerial Hazard
- Temporary Flight Restriction
- Uncontained
- Wildfire Daily Fire Perimeter
- Fire Containment Line
- Rim Lakes Aerial Avoidance 2023
- Aerial Fire Retardant Avoidance Area
- Wilderness
- Campground
- Picnic Site
- Trailhead
- Horse Camp
- Interpretive Visitor Center
- Forest Service
- Cemetery
- City / Town Hall
- School (K - 12)
- College / University
- Post Office
- Fire Station / EMS Station
- Hospital / Medical Center
- Law Enforcement
- Court House; State Capitol; US Capitol
- Secondary Highway
- Road, Unspecified
- Trail
- Runways
- USFS Proclaimed Forest Grassland
- USFS Administrative Forest
- USFS Ranger District
- USFS Wilderness
- State Conservation Area
- Nonarthen Shore
- Artificial Path
- Pipeline Underground
- Stream/River
- Stream/River Intermittent
- Dam / Weir
- Wash
- Lake / Pond
- Lake / Pond (Intermittent)
- Reservoir
- PLSS Township
- PLSS Section
- Non Forest
- BIA Tribal Land
- Urban Area
- Civil Airport w/o Facilities
- Air Traffic Service Route
- Visual Route
- Visual Route Outer Boundary
- Instrument Route Outer Boundary
- Main Power Line





IC Point Type	Label	North UTM X	North UTM Y	Easting (Feet)	Comments
Dip Site	1	34716.477 N	11075.460 W	6337	Dip Tank
Dip Site	2	34716.477 N	11075.460 W	6337	Dip Tank
Dip Site	3	34716.477 N	11075.460 W	6337	Dip Tank
Dip Site	4	34716.477 N	11075.460 W	6337	Dip Tank
Dip Site	5	34716.477 N	11075.460 W	6337	Dip Tank
Dip Site	6	34716.477 N	11075.460 W	6337	Dip Tank
Dip Site	7	34716.477 N	11075.460 W	6337	Dip Tank
Dip Site	8	34716.477 N	11075.460 W	6337	Dip Tank
Dip Site	9	34716.477 N	11075.460 W	6337	Dip Tank
Dip Site	10	34716.477 N	11075.460 W	6337	Dip Tank
Dip Site	11	34716.477 N	11075.460 W	6337	Dip Tank
Dip Site	12	34716.477 N	11075.460 W	6337	Dip Tank
Dip Site	13	34716.477 N	11075.460 W	6337	Dip Tank
Dip Site	14	34716.477 N	11075.460 W	6337	Dip Tank
Dip Site	15	34716.477 N	11075.460 W	6337	Dip Tank
Dip Site	16	34716.477 N	11075.460 W	6337	Dip Tank
Dip Site	17	34716.477 N	11075.460 W	6337	Dip Tank
Dip Site	18	34716.477 N	11075.460 W	6337	Dip Tank
Dip Site	19	34716.477 N	11075.460 W	6337	Dip Tank
Dip Site	20	34716.477 N	11075.460 W	6337	Dip Tank
Dip Site	21	34716.477 N	11075.460 W	6337	Dip Tank
Dip Site	22	34716.477 N	11075.460 W	6337	Dip Tank
Dip Site	23	34716.477 N	11075.460 W	6337	Dip Tank
Dip Site	24	34716.477 N	11075.460 W	6337	Dip Tank
Dip Site	25	34716.477 N	11075.460 W	6337	Dip Tank
Dip Site	26	34716.477 N	11075.460 W	6337	Dip Tank
Dip Site	27	34716.477 N	11075.460 W	6337	Dip Tank
Dip Site	28	34716.477 N	11075.460 W	6337	Dip Tank
Dip Site	29	34716.477 N	11075.460 W	6337	Dip Tank
Dip Site	30	34716.477 N	11075.460 W	6337	Dip Tank
Dip Site	31	34716.477 N	11075.460 W	6337	Dip Tank
Dip Site	32	34716.477 N	11075.460 W	6337	Dip Tank
Dip Site	33	34716.477 N	11075.460 W	6337	Dip Tank
Dip Site	34	34716.477 N	11075.460 W	6337	Dip Tank
Dip Site	35	34716.477 N	11075.460 W	6337	Dip Tank
Dip Site	36	34716.477 N	11075.460 W	6337	Dip Tank
Dip Site	37	34716.477 N	11075.460 W	6337	Dip Tank
Dip Site	38	34716.477 N	11075.460 W	6337	Dip Tank
Dip Site	39	34716.477 N	11075.460 W	6337	Dip Tank
Dip Site	40	34716.477 N	11075.460 W	6337	Dip Tank
Dip Site	41	34716.477 N	11075.460 W	6337	Dip Tank
Dip Site	42	34716.477 N	11075.460 W	6337	Dip Tank
Dip Site	43	34716.477 N	11075.460 W	6337	Dip Tank
Dip Site	44	34716.477 N	11075.460 W	6337	Dip Tank
Dip Site	45	34716.477 N	11075.460 W	6337	Dip Tank
Dip Site	46	34716.477 N	11075.460 W	6337	Dip Tank
Dip Site	47	34716.477 N	11075.460 W	6337	Dip Tank
Dip Site	48	34716.477 N	11075.460 W	6337	Dip Tank
Dip Site	49	34716.477 N	11075.460 W	6337	Dip Tank
Dip Site	50	34716.477 N	11075.460 W	6337	Dip Tank
Dip Site	51	34716.477 N	11075.460 W	6337	Dip Tank
Dip Site	52	34716.477 N	11075.460 W	6337	Dip Tank
Dip Site	53	34716.477 N	11075.460 W	6337	Dip Tank
Dip Site	54	34716.477 N	11075.460 W	6337	Dip Tank
Dip Site	55	34716.477 N	11075.460 W	6337	Dip Tank
Dip Site	56	34716.477 N	11075.460 W	6337	Dip Tank
Dip Site	57	34716.477 N	11075.460 W	6337	Dip Tank
Dip Site	58	34716.477 N	11075.460 W	6337	Dip Tank
Dip Site	59	34716.477 N	11075.460 W	6337	Dip Tank
Dip Site	60	34716.477 N	11075.460 W	6337	Dip Tank
Dip Site	61	34716.477 N	11075.460 W	6337	Dip Tank
Dip Site	62	34716.477 N	11075.460 W	6337	Dip Tank
Dip Site	63	34716.477 N	11075.460 W	6337	Dip Tank
Dip Site	64	34716.477 N	11075.460 W	6337	Dip Tank
Dip Site	65	34716.477 N	11075.460 W	6337	Dip Tank
Dip Site	66	34716.477 N	11075.460 W	6337	Dip Tank
Dip Site	67	34716.477 N	11075.460 W	6337	Dip Tank
Dip Site	68	34716.477 N	11075.460 W	6337	Dip Tank
Dip Site	69	34716.477 N	11075.460 W	6337	Dip Tank
Dip Site	70	34716.477 N	11075.460 W	6337	Dip Tank
Dip Site	71	34716.477 N	11075.460 W	6337	Dip Tank
Dip Site	72	34716.477 N	11075.460 W	6337	Dip Tank
Dip Site	73	34716.477 N	11075.460 W	6337	Dip Tank
Dip Site	74	34716.477 N	11075.460 W	6337	Dip Tank
Dip Site	75	34716.477 N	11075.460 W	6337	Dip Tank
Dip Site	76	34716.477 N	11075.460 W	6337	Dip Tank
Dip Site	77	34716.477 N	11075.460 W	6337	Dip Tank
Dip Site	78	34716.477 N	11075.460 W	6337	Dip Tank
Dip Site	79	34716.477 N	11075.460 W	6337	Dip Tank
Dip Site	80	34716.477 N	11075.460 W	6337	Dip Tank
Dip Site	81	34716.477 N	11075.460 W	6337	Dip Tank
Dip Site	82	34716.477 N	11075.460 W	6337	Dip Tank
Dip Site	83	34716.477 N	11075.460 W	6337	Dip Tank
Dip Site	84	34716.477 N	11075.460 W	6337	Dip Tank
Dip Site	85	34716.477 N	11075.460 W	6337	Dip Tank
Dip Site	86	34716.477 N	11075.460 W	6337	Dip Tank
Dip Site	87	34716.477 N	11075.460 W	6337	Dip Tank
Dip Site	88	34716.477 N	11075.460 W	6337	Dip Tank
Dip Site	89	34716.477 N	11075.460 W	6337	Dip Tank
Dip Site	90	34716.477 N	11075.460 W	6337	Dip Tank
Dip Site	91	34716.477 N	11075.460 W	6337	Dip Tank
Dip Site	92	34716.477 N	11075.460 W	6337	Dip Tank
Dip Site	93	34716.477 N	11075.460 W	6337	Dip Tank
Dip Site	94	34716.477 N	11075.460 W	6337	Dip Tank
Dip Site	95	34716.477 N	11075.460 W	6337	Dip Tank
Dip Site	96	34716.477 N	11075.460 W	6337	Dip Tank
Dip Site	97	34716.477 N	11075.460 W	6337	Dip Tank
Dip Site	98	34716.477 N	11075.460 W	6337	Dip Tank
Dip Site	99	34716.477 N	11075.460 W	6337	Dip Tank
Dip Site	100	34716.477 N	11075.460 W	6337	Dip Tank



Miles
0 1 2 4

Kilometers
0 1 2 4



1:60,000 - Tonto GIS - 9/20/2023 1838
Acres from R and GPS
North American 1983 Datum, LatLong Grid