

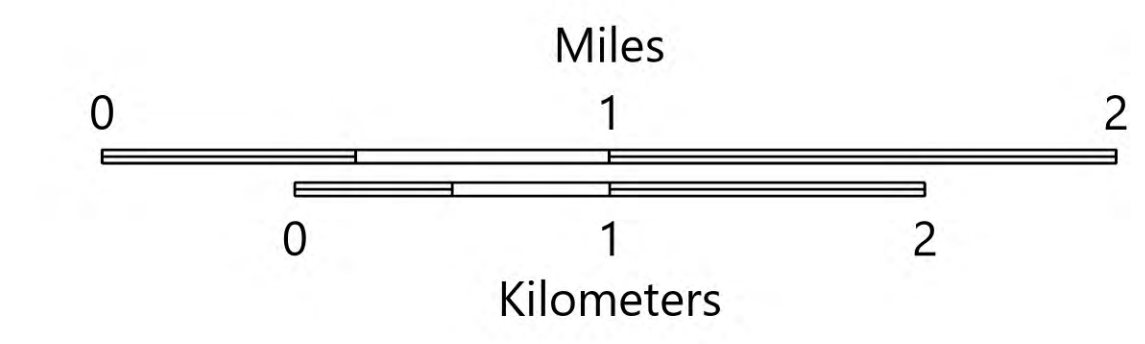
**MEDICAL TRANSPORT**  
**GROUND**  
**Valentine Fire**  
**AZ-TNF-1315**  
**9/21/2023**

5,626 acres at 9/20/2023 @ 1800

**Drive Time Category**

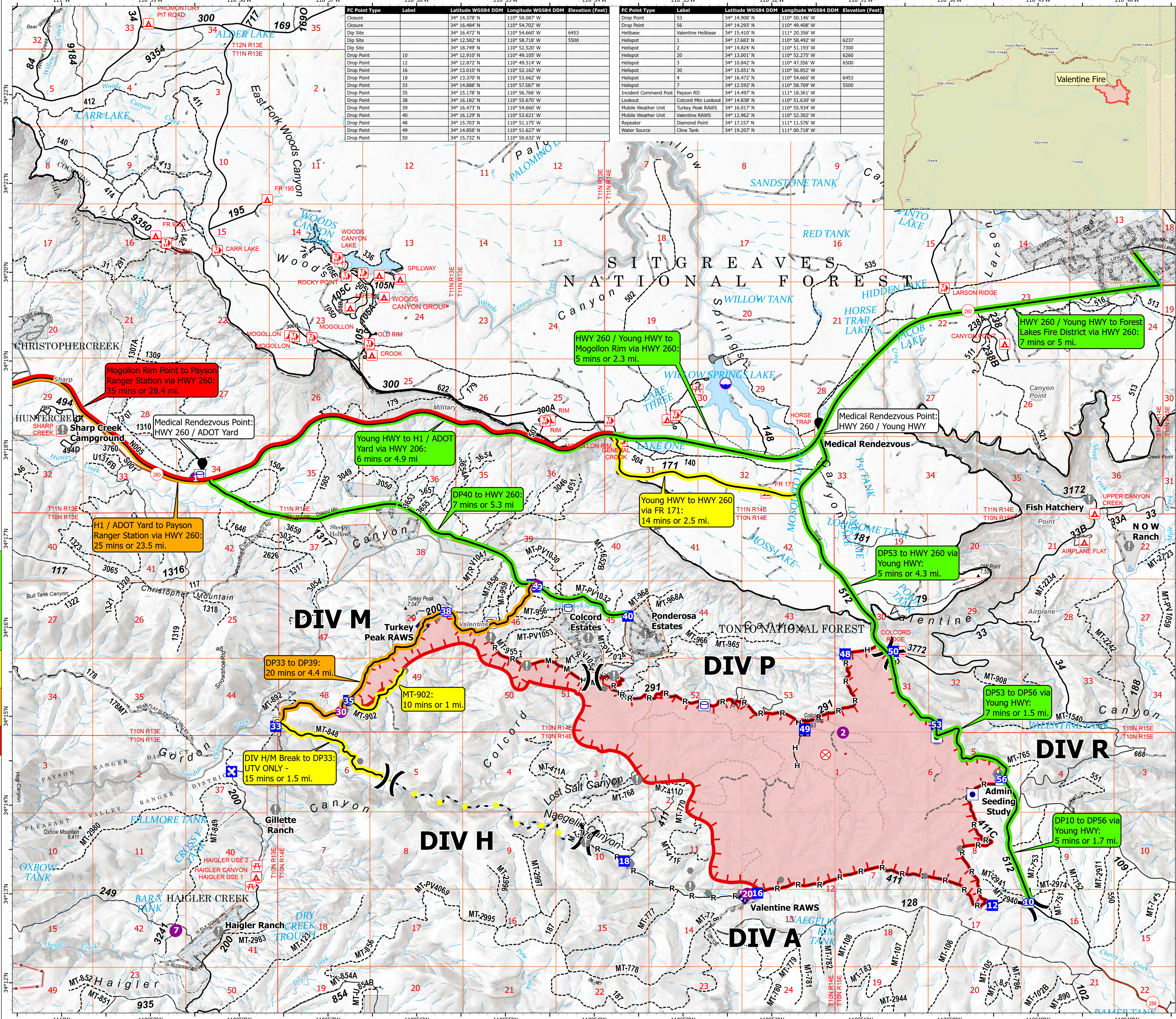
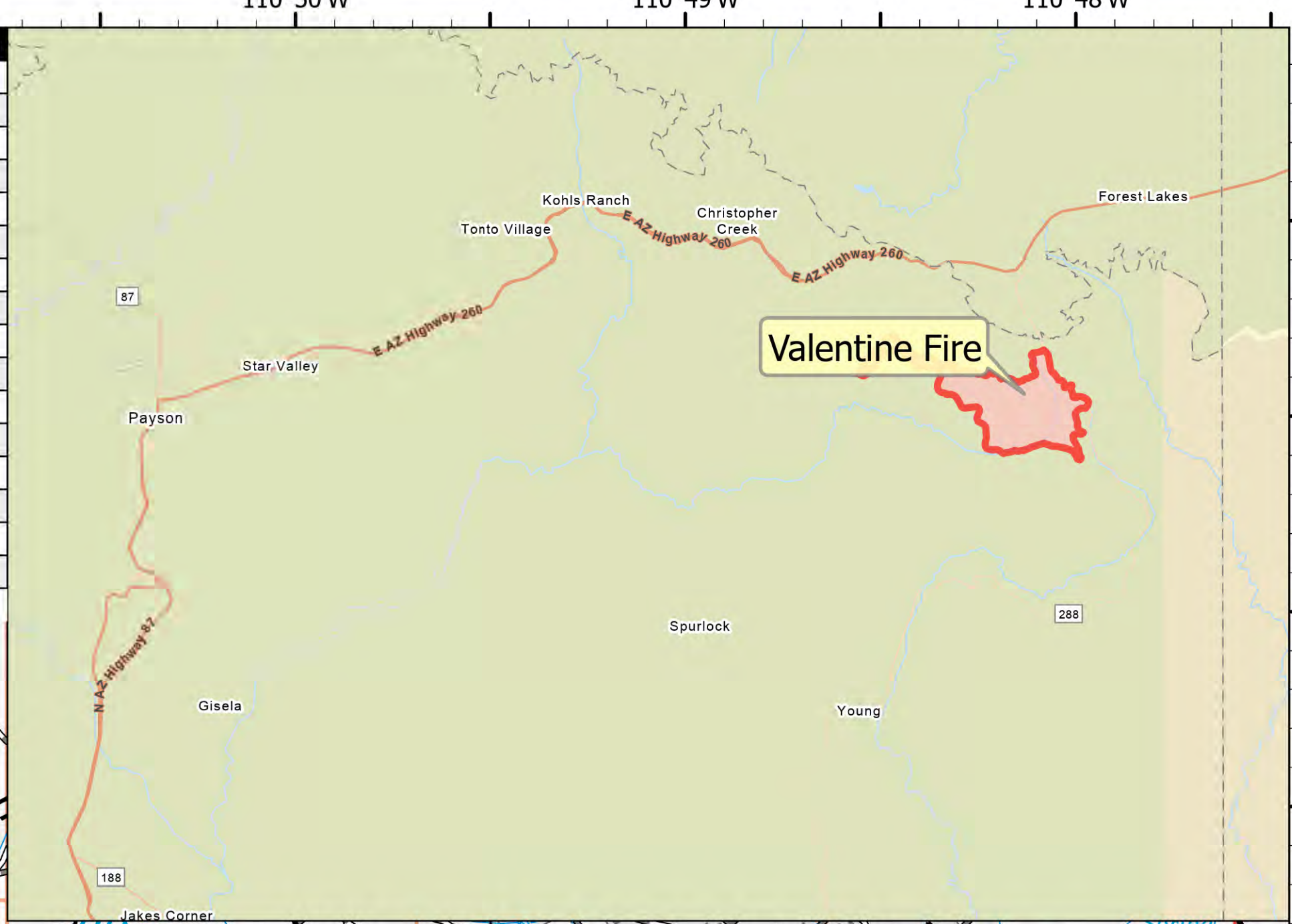
- 5-10 minutes
- 10-15 minutes
- 20-25 minutes
- 35+ minutes
- Other Property
- Water Tank
- Dip Site
- Helispot
- Division Break
- Drop Point
- Closure
- Lookout
- Fire Origin
- Value at Risk
- Other
- Mobile Weather Unit
- Completed Dozer Line
- Completed Hand Line
- Completed Mixed Construction Line
- Completed Road as Line
- Access or Improved Road
- Fence
- Highlighted Feature
- Other
- Repair Line
- Uncontained
- Wildfire Daily Fire Perimeter

- 5-10 minutes
  - DP10 to DP56 via Young HWY: 5 mins or 1.7 mi.
  - DP56 to DP53 via Young HWY: 7 mins or 1.5 mi.
  - DP53 to HWY 260 via Young HWY: 5 mins or 4.3 mi.
  - DP40 to HWY 260: 7 mins or 5.3 mi.
  - HWY 260 / Young HWY to Forest Lakes Fire District via HWY 260: 7 mins or 5 mi.
  - HWY 260 / Young HWY to Mogollon Rim via HWY 260: 5 mins or 2.3 mi.
  - Young HWY to H1 / ADOT Yard via HWY 260: 6 mins or 4.9 mi.
- 10-15 minutes
  - DIV H/M Break to DP33: UTV ONLY - 15 mins or 1.5 mi.
  - Young HWY to HWY 260 via FR 171: 14 mins or 2.5 mi.
  - MT-902: 10 mins or 1 mi.
- 20-25 minutes
  - DP33 to DP39: 20 mins or 4.4 mi.
  - H1 / ADOT Yard to Payson Ranger Station via HWY 260: 25 mins or 23.5 mi.
- 35+ minutes
  - Mogollon Rim to Payson Ranger Station via HWY 260: 35 mins or 28.4 mi.



| FC Point Type | Label | Latitude WGS84 DDM | Longitude WGS84 DDM | Elevation (Feet) |
|---------------|-------|--------------------|---------------------|------------------|
| Closure       |       | 34° 14.378' N      | 110° 58.087' W      |                  |
| Closure       |       | 34° 16.484' N      | 110° 54.702' W      | 6453             |
| Dip Site      |       | 34° 16.472' N      | 110° 54.660' W      |                  |
| Dip Site      |       | 34° 12.582' N      | 110° 58.718' W      | 5500             |
| Drop Point    | 10    | 34° 18.749' N      | 110° 52.520' W      |                  |
| Drop Point    | 12    | 34° 12.877' N      | 110° 49.514' W      |                  |
| Drop Point    | 16    | 34° 13.010' N      | 110° 52.162' W      |                  |
| Drop Point    | 18    | 34° 13.370' N      | 110° 53.662' W      |                  |
| Drop Point    | 33    | 34° 14.888' N      | 110° 57.587' W      |                  |
| Drop Point    | 35    | 34° 15.178' N      | 110° 56.766' W      |                  |
| Drop Point    | 38    | 34° 16.182' N      | 110° 55.670' W      |                  |
| Drop Point    | 39    | 34° 16.473' N      | 110° 54.660' W      |                  |
| Drop Point    | 40    | 34° 16.129' N      | 110° 53.621' W      |                  |
| Drop Point    | 48    | 34° 15.703' N      | 110° 51.175' W      |                  |
| Drop Point    | 49    | 34° 14.858' N      | 110° 51.627' W      |                  |
| Drop Point    | 50    | 34° 15.732' N      | 110° 50.632' W      |                  |

| FC Point Type         | Label               | Latitude WGS84 DDM | Longitude WGS84 DDM | Elevation (Feet) |
|-----------------------|---------------------|--------------------|---------------------|------------------|
| Drop Point            | 53                  | 34° 14.908' N      | 110° 50.146' W      |                  |
| Drop Point            | 56                  | 34° 14.293' N      | 110° 49.408' W      |                  |
| Helibase              | Valentine Helibase  | 34° 15.410' N      | 111° 20.356' W      |                  |
| Helispot              | 1                   | 34° 12.683' N      | 110° 58.492' W      | 6237             |
| Helispot              | 2                   | 34° 14.824' N      | 110° 51.193' W      | 7300             |
| Helispot              | 20                  | 34° 13.001' N      | 110° 52.275' W      | 6260             |
| Helispot              | 3                   | 34° 10.842' N      | 110° 47.356' W      | 6500             |
| Helispot              | 30                  | 34° 15.051' N      | 110° 56.852' W      |                  |
| Helispot              | 4                   | 34° 16.472' N      | 110° 54.660' W      | 6453             |
| Helispot              | 7                   | 34° 12.592' N      | 110° 58.709' W      | 5500             |
| Incident Command Post | Payson RD           | 34° 14.497' N      | 111° 18.361' W      |                  |
| Lookout               | Colcord Mtn Lookout | 34° 14.838' N      | 110° 51.630' W      |                  |
| Mobile Weather Unit   | Turkey Peak RAWS    | 34° 16.017' N      | 110° 55.934' W      |                  |
| Mobile Weather Unit   | Valentine RAWS      | 34° 12.962' N      | 110° 52.302' W      |                  |
| Repeater              | Diamond Point       | 34° 17.157' N      | 111° 11.576' W      |                  |
| Water Source          | Cline Tank          | 34° 19.207' N      | 111° 00.718' W      |                  |



Mogollon Rim Point to Payson Ranger Station via HWY 260: 35 mins or 28.4 mi.

Medical Rendezvous Point: HWY 260 / ADOT Yard

Young HWY to H1 / ADOT Yard via HWY 206: 6 mins or 4.9 mi

DP40 to HWY 260: 7 mins or 5.3 mi

HWY 260 / Young HWY to Mogollon Rim via HWY 260: 5 mins or 2.3 mi.

Young HWY to HWY 260 via FR 171: 14 mins or 2.5 mi.

Medical Rendezvous Point: HWY 260 / Young HWY

DP53 to HWY 260 via Young HWY: 5 mins or 4.3 mi.

DP53 to DP56 via Young HWY: 7 mins or 1.5 mi.

DP10 to DP56 via Young HWY: 5 mins or 1.7 mi.

DIV H/M Break to DP33: UTV ONLY - 15 mins or 1.5 mi.

MT-902: 10 mins or 1 mi.

