

MEDICAL TRANSPORTATION AVIATION

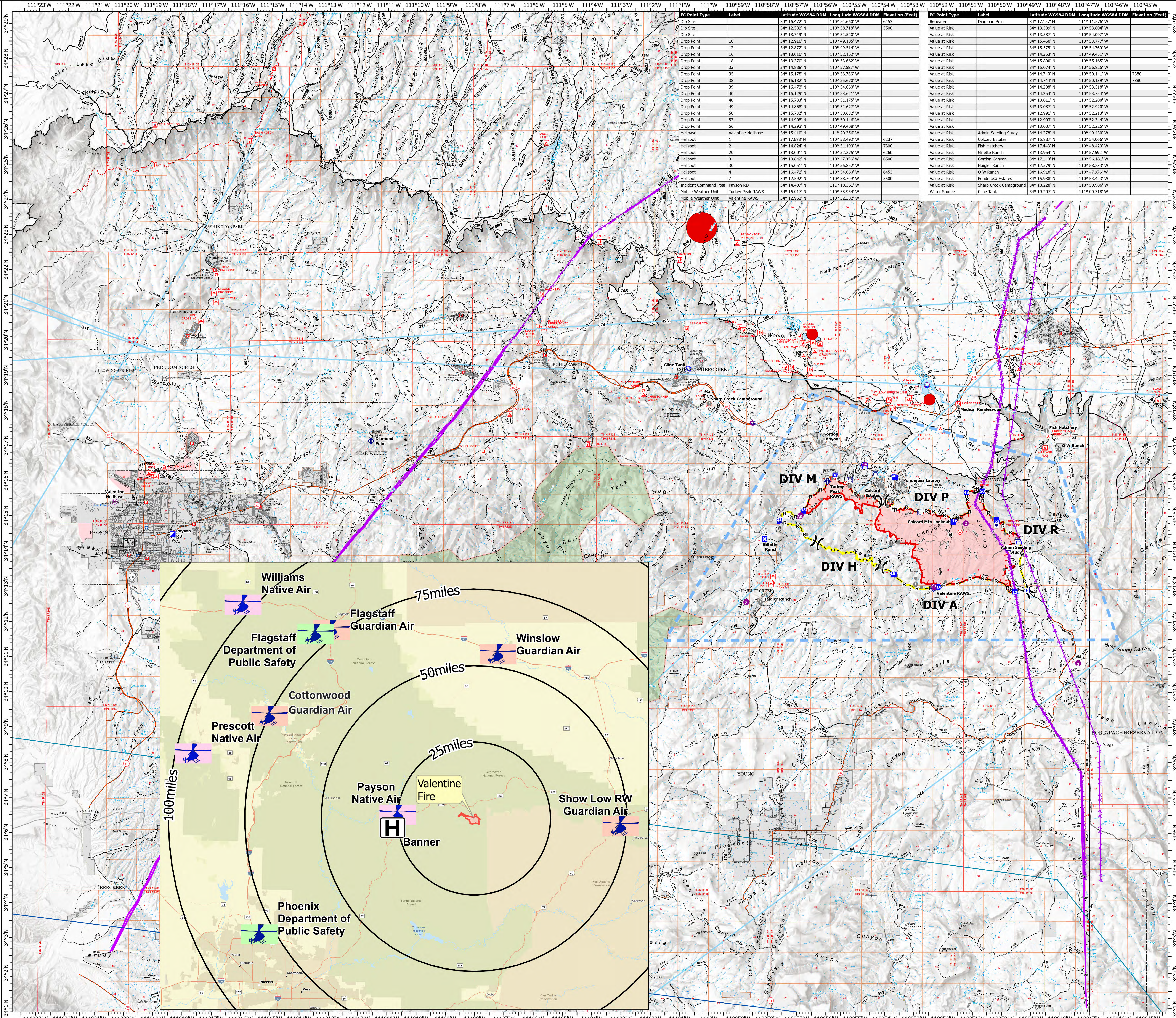
Valentine Fire

AZ-TNF-1315

9/22/2023

5,902 acres at 9/21/2023 @ 1800

- Other Property
- Water Tank
- Dip Site
- Helispot
- Helibase
- Division Break
- Incident Command Post
- Drop Point
- Closure
- Lookout
- Hot Spot - Spot Fire
- Fire Origin
- Value at Risk
- Other
- Mobile Weather Unit
- Repeater
- Water Source
- Completed Dozer Line
- Completed Hand Line
- Completed Mixed Construction Line
- Completed Road as Line
- Access or Improved Road
- Fence
- Highlighted Feature
- Other
- Repair Line
- Aerial Hazard
- Temporary Flight Restriction
- Uncontained
- Wildfire Daily Fire Perimeter
- Completed Fireline
- Rim Lakes Aerial Avoidance 2023
- Wilderness
- Secondary Highway
- Road, Unspecified
- Runways
- Non Forest
- Civil Airport w/o Facilities
- Air Traffic Service Route
- Visual Route
- Visual Route Outer Boundary
- Instrument Route Outer Boundary
- Main Power Line



FC Point Type	Label	Latitude WGS84 DDM	Longitude WGS84 DDM	Elevation (Feet)	FC Point Type	Label	Latitude WGS84 DDM	Longitude WGS84 DDM	Elevation (Feet)
Drop Point	1	34° 12.582' N	110° 58.718' W	5500	Repeater	Diamond Point	34° 11.117' N	110° 55.576' W	
Dip Site	2	34° 18.749' N	110° 52.520' W		Value at Risk		34° 13.339' N	110° 53.604' W	
Dip Site	3	34° 12.910' N	110° 49.105' W		Value at Risk		34° 13.587' N	110° 54.097' W	
Drop Point	10	34° 12.910' N	110° 49.105' W		Value at Risk		34° 15.460' N	110° 53.777' W	
Drop Point	12	34° 12.872' N	110° 49.514' W		Value at Risk		34° 15.575' N	110° 54.760' W	
Drop Point	16	34° 13.010' N	110° 52.162' W		Value at Risk		34° 14.353' N	110° 49.451' W	
Drop Point	18	34° 13.370' N	110° 53.663' W		Value at Risk		34° 15.890' N	110° 55.145' W	
Drop Point	33	34° 14.888' N	110° 57.887' W		Value at Risk		34° 15.074' N	110° 56.825' W	
Drop Point	35	34° 15.178' N	110° 56.766' W		Value at Risk		34° 14.740' N	110° 50.141' W	7380
Drop Point	38	34° 16.182' N	110° 55.670' W		Value at Risk		34° 14.444' N	110° 50.139' W	7380
Drop Point	39	34° 16.473' N	110° 54.660' W		Value at Risk		34° 14.288' N	110° 53.518' W	
Drop Point	40	34° 16.229' N	110° 53.621' W		Value at Risk		34° 14.254' N	110° 53.754' W	
Drop Point	48	34° 15.703' N	110° 51.175' W		Value at Risk		34° 13.011' N	110° 52.208' W	
Drop Point	49	34° 14.858' N	110° 51.627' W		Value at Risk		34° 13.087' N	110° 53.820' W	
Drop Point	50	34° 15.732' N	110° 50.632' W		Value at Risk		34° 12.991' N	110° 52.213' W	
Drop Point	53	34° 14.908' N	110° 50.146' W		Value at Risk		34° 12.993' N	110° 52.344' W	
Drop Point	56	34° 14.293' N	110° 54.408' W		Value at Risk		34° 13.007' N	110° 52.225' W	
Helibase	Valentine Helibase	34° 15.410' N	111° 20.356' W		Value at Risk	Admin Seeding Study	34° 14.278' N	110° 49.430' W	
Helispot	1	34° 15.972' N	110° 54.660' W	6237	Value at Risk	Colcord Estates	34° 15.887' N	110° 54.066' W	
Helispot	2	34° 14.824' N	110° 51.193' W	7300	Value at Risk	Fish Hatchery	34° 12.443' N	110° 48.233' W	
Helispot	20	34° 13.001' N	110° 52.275' W	6260	Value at Risk	Gillette Ranch	34° 13.954' N	110° 57.592' W	
Helispot	3	34° 10.842' N	110° 47.356' W	6500	Value at Risk	Gordon Canyon	34° 17.140' N	110° 56.181' W	
Helispot	30	34° 15.051' N	110° 56.852' W		Value at Risk	Haigler Ranch	34° 12.579' N	110° 58.233' W	
Helispot	4	34° 16.472' N	110° 54.660' W	6453	Value at Risk	O W Ranch	34° 16.918' N	110° 47.976' W	
Helispot	7	34° 12.592' N	110° 58.709' W	5500	Value at Risk	Ponderosa Estates	34° 15.938' N	110° 53.423' W	
Incident Command Post	Payson RD	34° 14.807' N	111° 18.361' W		Value at Risk	Sharp Creek Campground	34° 18.228' N	110° 59.866' W	
Mobile Weather Unit	Turkey Peak RAWS	34° 16.017' N	110° 55.934' W		Water Source	Cine Tank	34° 19.207' N	111° 00.718' W	
Mobile Weather Unit	Valentine RAWS	34° 12.962' N	110° 52.302' W						

