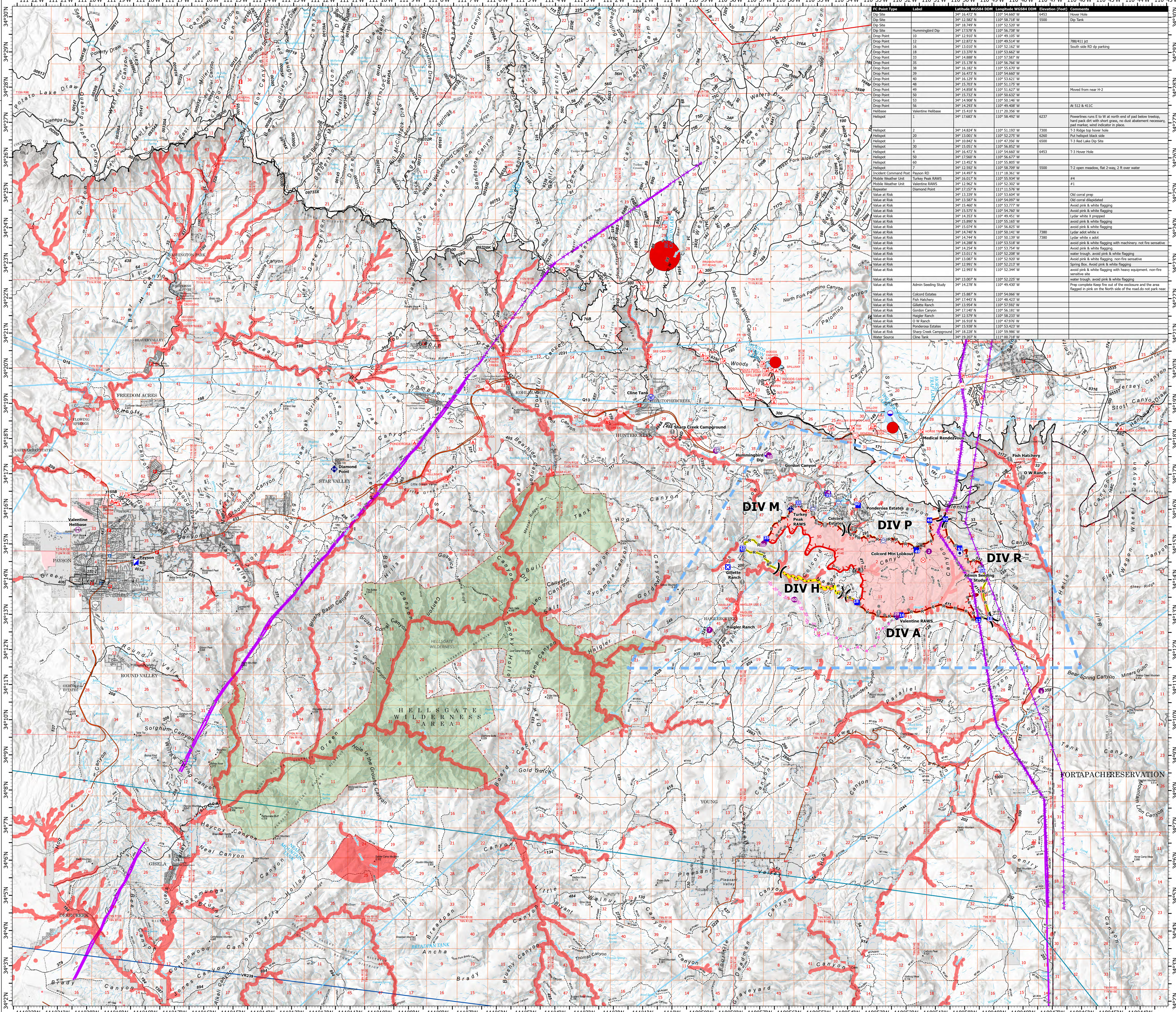


AIR OPERATIONS


Valentine Fire
AZ-TNF-1315
9/25/2023

7,223 acres at 9/24/2023 @ 1700

- Other Property
- Water Tank
- Dip Site
- Helispot
- Helibase
- Division Break
- Incident Command Post
- Drop Point
- Closure
- Lookout
- Hot Spot - Spot Fire
- Fire Origin
- Value at Risk
- Mobile Weather Unit
- Repeater
- Water Source
- Completed Dozer Line
- Completed Hand Line
- Completed Mixed Construction Line
- Completed Road as Line
- Planned Dozer Line
- Planned Road as Line
- Access or Improved Road
- Fence
- Highlighted Feature
- Other
- Repair Line
- Aerial Hazard
- Temporary Flight Restriction
- Uncontained
- Wildfire Daily Fire Perimeter
- Fire Containment Line
- Rim Lakes Aerial Avoidance 2023
- Aerial Fire Retardant Avoidance Area
- Wilderness
- Campground
- Picnic Site
- Trailhead
- Horse Camp
- Interpretive Visitor Center
- Forest Service
- Cemetery
- City / Town Hall
- School (K - 12)
- College / University
- Post Office
- Fire Station / EMS Station
- Hospital / Medical Center
- Law Enforcement
- Court House; State Capitol; US Capitol
- Secondary Highway
- Road, Unspecified
- Trail
- Runways
- USFS Proclaimed Forest Grassland
- USFS Administrative Forest
- USFS Ranger District
- USFS Wilderness
- State Conservation Area
- Nonearthen Shore
- Artificial Path
- Pipeline Underground
- Stream/River
- Stream/River Intermittent
- Dam / Weir
- Wash
- Lake / Pond
- Lake / Pond (Intermittent)
- Reservoir
- PLSS Township
- PLSS Section
- Non Forest
- BIA Tribal Land
- Urban Area
- Civil Airport w/o Facilities
- Air Traffic Service Route
- Visual Route
- Visual Route Outer Boundary
- Instrument Route Outer Boundary
- Main Power Line





IC Point Type	Label	Latitude, WGS84 DTM	Longitude, WGS84 DTM	Elevation (Feet)	Comments
Dip Site	1	34° 12.582' N	110° 58.728' W	5500	Dip Tank
Dip Site	2	34° 18.749' N	110° 52.520' W		Lower Site
Dip Site	3	34° 12.872' N	110° 52.520' W		Hummingbird Dip
Drop Point	10	34° 12.910' N	110° 49.100' W		
Drop Point	12	34° 12.872' N	110° 49.552' W		788/411 jet
Drop Point	16	34° 13.005' N	110° 53.160' W		South side RD dip parking
Drop Point	18	34° 13.392' N	110° 53.662' W		
Drop Point	33	34° 14.888' N	110° 57.987' W		
Drop Point	35	34° 15.279' N	110° 56.760' W		
Drop Point	38	34° 16.182' N	110° 55.650' W		
Drop Point	39	34° 16.473' N	110° 54.660' W		
Drop Point	40	34° 16.129' N	110° 53.842' W		
Drop Point	48	34° 15.703' N	110° 54.162' W		
Drop Point	49	34° 14.858' N	110° 51.627' W		Moved from near H-2
Drop Point	50	34° 15.732' N	110° 50.562' W		
Drop Point	53	34° 14.908' N	110° 51.948' W		
Drop Point	56	34° 14.293' N	110° 49.408' W		At 512 & 411C
Helibase	1	34° 15.410' N	111° 20.356' W		
Helispot	1	34° 17.683' N	110° 58.482' W	6237	Powerlines run E to W at north end of pad below tree; hand pack det with short grass, no dust abatement necessary, pad marker used indicator in place.
Helispot	2	34° 14.624' N	110° 51.193' W	7300	T-3 Ridge tower hole
Helispot	3	34° 13.270' N	110° 52.775' W	6260	Put helispot black side
Helispot	30	34° 10.842' N	110° 47.296' W	6500	T-3 Red Lake Dip Site
Helispot	30	34° 14.001' N	110° 56.802' W		
Helispot	4	34° 16.472' N	110° 54.660' W	6453	T-3 Hover Hole
Helispot	50	34° 12.960' N	110° 56.862' W	600	
Helispot	60	34° 13.005' N	110° 52.862' W		
Helispot	7	34° 12.592' N	110° 58.702' W	5500	T-3 open meadow, flat 2-way, 2 ft over water
Incident Command Post	Payson RD	34° 14.497' N	111° 18.362' W		#4
Mobile Weather Unit	Valentine RAWS	34° 13.005' N	110° 52.302' W		#1
Repeater	Diamond Point	34° 17.157' N	111° 11.576' W		
Value at Risk	34° 13.195' N	110° 53.662' W		Old coral crop	
Value at Risk	34° 13.587' N	110° 54.097' W		Old coral disjuncted	
Value at Risk	34° 15.469' N	110° 57.777' W		Avoid pink & white flagging	
Value at Risk	34° 15.279' N	110° 56.760' W		Avoid pink & white flagging	
Value at Risk	34° 14.353' N	110° 49.451' W		Lyster white & prepod	
Value at Risk	34° 15.890' N	110° 55.165' W		avoid pink & white flagging	
Value at Risk	34° 15.074' N	110° 56.845' W		avoid pink & white flagging	
Value at Risk	34° 14.264' N	110° 50.510' W	7380	Lyster acid white x	
Value at Risk	34° 14.744' N	110° 50.139' W	7380	Lyster white x acid	
Value at Risk	34° 14.288' N	110° 53.538' W		avoid pink & white flagging with machinery, not fire sensitive	
Value at Risk	34° 14.264' N	110° 52.775' W		Avoid pink & white flagging	
Value at Risk	34° 13.011' N	110° 52.208' W		water trough, avoid pink & white flagging	
Value at Risk	34° 13.087' N	110° 52.920' W		Avoid pink & white flagging, non-fire sensitive	
Value at Risk	34° 12.993' N	110° 52.225' W		water trough, avoid pink & white flagging	
Value at Risk	34° 12.993' N	110° 52.344' W		avoid pink & white flagging with heavy equipment, non-fire sensitive site	
Value at Risk	34° 13.007' N	110° 52.225' W		water trough, avoid pink & white flagging	
Value at Risk	34° 14.278' N	110° 49.432' W		Prup complete Keep fire out of the enclosure and the area flagged in pink on the north side of the road do not park near	
Value at Risk	34° 15.887' N	110° 54.066' W			
Value at Risk	34° 17.443' N	110° 48.423' W			
Value at Risk	34° 13.954' N	110° 52.982' W			
Value at Risk	34° 17.140' N	110° 51.948' W			
Value at Risk	34° 12.579' N	110° 58.233' W			
Value at Risk	34° 16.918' N	110° 47.676' W			
Value at Risk	34° 15.938' N	110° 51.423' W			
Value at Risk	34° 18.228' N	110° 59.986' W			
Water Source	Cline Tank	34° 19.207' N	111° 00.718' W		



Miles
0 1 2 4

Kilometers
0 1 2 4



1:60,000 - Tonto GIS - 9/24/2023 1738
Acres from IR and GPS
North American 1983 Datum, LatLong Grid