

# MEDICAL TRANSPORTATION AVIATION

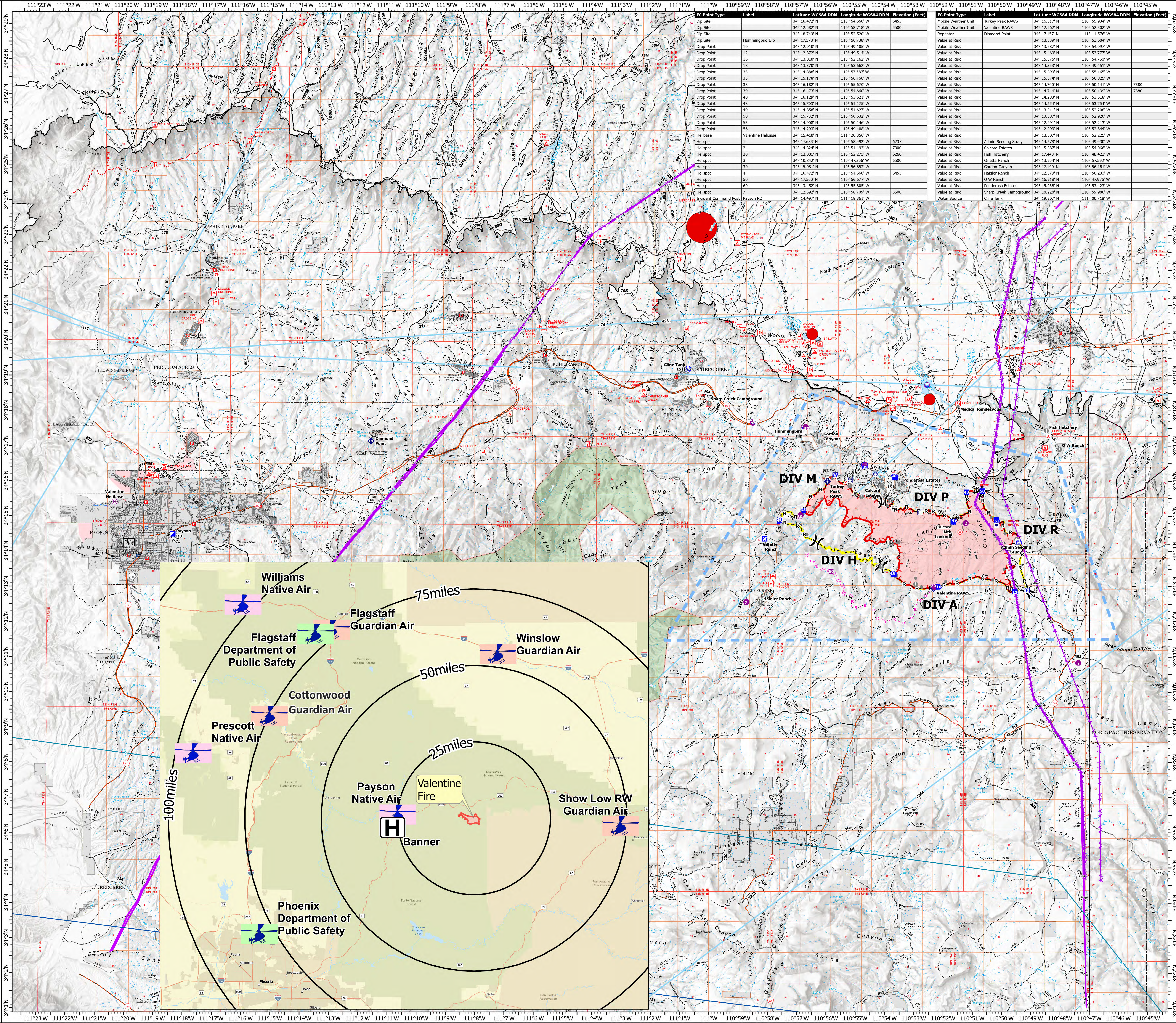
## Valentine Fire

### AZ-TNF-1315

9/25/2023

7,223 acres at 9/24/2023 @ 1700

- Other Property
- Water Tank
- Dip Site
- Helispot
- Helibase
- Division Break
- Incident Command Post
- Drop Point
- Closure
- Lookout
- Hot Spot - Spot Fire
- Fire Origin
- Value at Risk
- Other
- Mobile Weather Unit
- Repeater
- Water Source
- Completed Dozer Line
- Completed Hand Line
- Completed Mixed Construction Line
- Completed Road as Line
- Planned Dozer Line
- Planned Road as Line
- Access or Improved Road
- Fence
- Highlighted Feature
- Other
- Repair Line
- Aerial Hazard
- Temporary Flight Restriction
- Uncontained
- Wildfire Daily Fire Perimeter
- Completed Fireline
- Rim Lakes Aerial Avoidance 2023
- Wilderness
- Secondary Highway
- Road, Unspecified
- Runways
- Non Forest
- Civil Airport w/o Facilities
- Air Traffic Service Route
- Visual Route
- Visual Route Outer Boundary
- Instrument Route Outer Boundary
- Main Power Line



FC Point Type	Label	Latitude WGS84 DDM	Longitude WGS84 DDM	Elevation (Feet)
Dip Site	1	34° 18.472' N	110° 54.640' W	6237
Dip Site	2	34° 18.482' N	110° 51.193' W	7300
Dip Site	20	34° 18.001' N	110° 52.793' W	6260
Dip Site	3	34° 10.842' N	110° 47.356' W	6200
Dip Site	30	34° 16.051' N	110° 56.852' W	
Dip Site	4	34° 16.472' N	110° 54.660' W	6453
Dip Site	50	34° 15.567' N	110° 56.677' W	
Dip Site	60	34° 15.452' N	110° 55.805' W	
Dip Site	7	34° 13.922' N	110° 58.705' W	5500
Incident Command Post	Payson RD	34° 14.497' N	111° 08.361' W	

FC Point Type	Label	Latitude WGS84 DDM	Longitude WGS84 DDM	Elevation (Feet)
Mobile Weather Unit	Turkey Peak RAWs	34° 15.017' N	110° 52.034' W	
Mobile Weather Unit	Valentine RAWs	34° 12.262' N	110° 52.302' W	
Repeater	Diamond Point	34° 17.157' N	111° 15.576' W	
Value at Risk		34° 13.339' N	110° 53.604' W	
Value at Risk		34° 13.587' N	110° 54.097' W	
Value at Risk		34° 13.460' N	110° 53.777' W	
Value at Risk		34° 15.575' N	110° 54.760' W	
Value at Risk		34° 14.353' N	110° 49.451' W	
Value at Risk		34° 15.890' N	110° 55.165' W	
Value at Risk		34° 15.074' N	110° 56.825' W	
Value at Risk		34° 14.740' N	110° 50.141' W	7380
Value at Risk		34° 14.744' N	110° 50.139' W	7380
Value at Risk		34° 14.288' N	110° 53.518' W	
Value at Risk		34° 14.254' N	110° 53.754' W	
Value at Risk		34° 13.011' N	110° 52.208' W	
Value at Risk		34° 13.087' N	110° 52.920' W	
Value at Risk		34° 13.261' N	110° 52.213' W	
Value at Risk		34° 12.993' N	110° 52.344' W	
Value at Risk		34° 13.007' N	110° 52.225' W	
Value at Risk	Admin Seeding Study	34° 14.278' N	110° 49.430' W	
Value at Risk	Colcord Estates	34° 15.887' N	110° 54.066' W	
Value at Risk	Fish Hatchery	34° 17.443' N	110° 52.743' W	
Value at Risk	Gillette Ranch	34° 17.592' N	110° 57.592' W	
Value at Risk	Gordon Canyon	34° 17.140' N	110° 56.181' W	
Value at Risk	Haigler Ranch	34° 15.579' N	110° 58.233' W	
Value at Risk	O W Ranch	34° 16.918' N	110° 47.976' W	
Value at Risk	Ponderosa Estates	34° 15.938' N	110° 53.423' W	
Value at Risk	Sharp Creek Campground	34° 18.068' N	110° 50.068' W	
Water Source	Cline Tank	34° 19.207' N	111° 00.718' W	

