

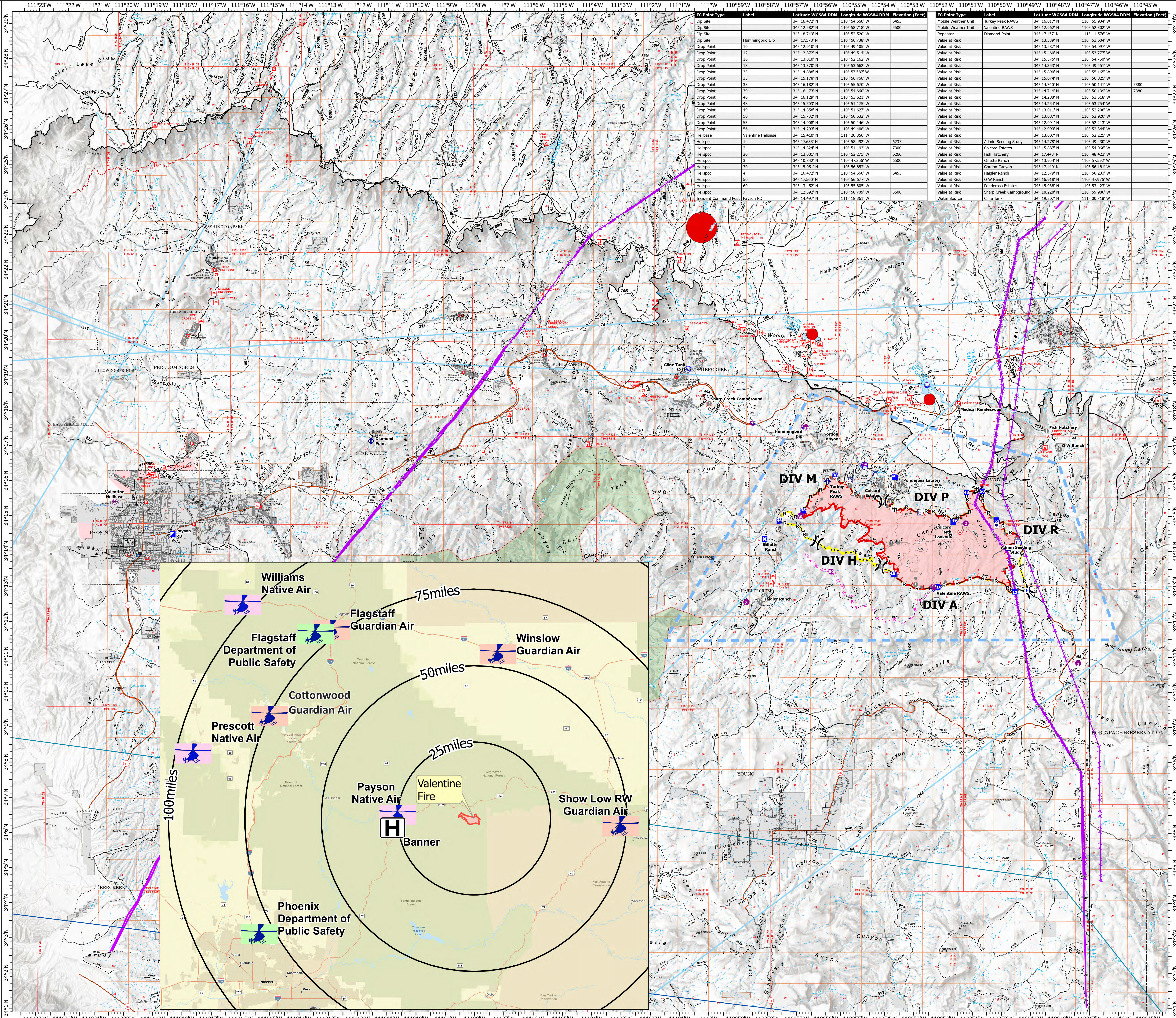
MEDICAL TRANSPORTATION AVIATION

Valentine Fire AZ-TNF-1315

9/26/2023

7,724 acres at 9/25/2023 @ 1500

- Other Property
- Water Tank
- Dip Site
- Helispot
- Helibase
- Division Break
- Incident Command Post
- Drop Point
- Closure
- Lookout
- Hot Spot - Spot Fire
- Fire Origin
- Value at Risk
- Other
- Mobile Weather Unit
- Repeater
- Water Source
- Completed Dozer Line
- Completed Hand Line
- Completed Mixed Construction Line
- Completed Road as Line
- Planned Dozer Line
- Planned Road as Line
- Access or Improved Road
- Fence
- Highlighted Feature
- Other
- Repair Line
- Aerial Hazard
- Temporary Flight Restriction
- Uncontained
- Wildfire Daily Fire Perimeter
- Completed Fireline
- Rim Lakes Aerial Avoidance 2023
- Wilderness
- Secondary Highway
- Road, Unspecified
- Runways
- Non Forest
- Civil Airport w/o Facilities
- Air Traffic Service Route
- Visual Route
- Visual Route Outer Boundary
- Instrument Route Outer Boundary
- Main Power Line



FC Point Type	Label	Latitude WGS84 DDM	Longitude WGS84 DDM	Elevation (Feet)
Dip Site	1	34° 18.582' N	110° 58.216' W	5500
Dip Site	2	34° 18.582' N	110° 58.216' W	5500
Dip Site	3	34° 18.582' N	110° 58.216' W	5500
Dip Site	4	34° 18.582' N	110° 58.216' W	5500
Dip Site	5	34° 18.582' N	110° 58.216' W	5500
Dip Site	6	34° 18.582' N	110° 58.216' W	5500
Dip Site	7	34° 18.582' N	110° 58.216' W	5500
Dip Site	8	34° 18.582' N	110° 58.216' W	5500
Dip Site	9	34° 18.582' N	110° 58.216' W	5500
Dip Site	10	34° 18.582' N	110° 58.216' W	5500
Dip Site	11	34° 18.582' N	110° 58.216' W	5500
Dip Site	12	34° 18.582' N	110° 58.216' W	5500
Dip Site	13	34° 18.582' N	110° 58.216' W	5500
Dip Site	14	34° 18.582' N	110° 58.216' W	5500
Dip Site	15	34° 18.582' N	110° 58.216' W	5500
Dip Site	16	34° 18.582' N	110° 58.216' W	5500
Dip Site	17	34° 18.582' N	110° 58.216' W	5500
Dip Site	18	34° 18.582' N	110° 58.216' W	5500
Dip Site	19	34° 18.582' N	110° 58.216' W	5500
Dip Site	20	34° 18.582' N	110° 58.216' W	5500
Dip Site	21	34° 18.582' N	110° 58.216' W	5500
Dip Site	22	34° 18.582' N	110° 58.216' W	5500
Dip Site	23	34° 18.582' N	110° 58.216' W	5500
Dip Site	24	34° 18.582' N	110° 58.216' W	5500
Dip Site	25	34° 18.582' N	110° 58.216' W	5500
Dip Site	26	34° 18.582' N	110° 58.216' W	5500
Dip Site	27	34° 18.582' N	110° 58.216' W	5500
Dip Site	28	34° 18.582' N	110° 58.216' W	5500
Dip Site	29	34° 18.582' N	110° 58.216' W	5500
Dip Site	30	34° 18.582' N	110° 58.216' W	5500
Dip Site	31	34° 18.582' N	110° 58.216' W	5500
Dip Site	32	34° 18.582' N	110° 58.216' W	5500
Dip Site	33	34° 18.582' N	110° 58.216' W	5500
Dip Site	34	34° 18.582' N	110° 58.216' W	5500
Dip Site	35	34° 18.582' N	110° 58.216' W	5500
Dip Site	36	34° 18.582' N	110° 58.216' W	5500
Dip Site	37	34° 18.582' N	110° 58.216' W	5500
Dip Site	38	34° 18.582' N	110° 58.216' W	5500
Dip Site	39	34° 18.582' N	110° 58.216' W	5500
Dip Site	40	34° 18.582' N	110° 58.216' W	5500
Dip Site	41	34° 18.582' N	110° 58.216' W	5500
Dip Site	42	34° 18.582' N	110° 58.216' W	5500
Dip Site	43	34° 18.582' N	110° 58.216' W	5500
Dip Site	44	34° 18.582' N	110° 58.216' W	5500
Dip Site	45	34° 18.582' N	110° 58.216' W	5500
Dip Site	46	34° 18.582' N	110° 58.216' W	5500
Dip Site	47	34° 18.582' N	110° 58.216' W	5500
Dip Site	48	34° 18.582' N	110° 58.216' W	5500
Dip Site	49	34° 18.582' N	110° 58.216' W	5500
Dip Site	50	34° 18.582' N	110° 58.216' W	5500
Dip Site	51	34° 18.582' N	110° 58.216' W	5500
Dip Site	52	34° 18.582' N	110° 58.216' W	5500
Dip Site	53	34° 18.582' N	110° 58.216' W	5500
Dip Site	54	34° 18.582' N	110° 58.216' W	5500
Dip Site	55	34° 18.582' N	110° 58.216' W	5500
Dip Site	56	34° 18.582' N	110° 58.216' W	5500
Dip Site	57	34° 18.582' N	110° 58.216' W	5500
Dip Site	58	34° 18.582' N	110° 58.216' W	5500
Dip Site	59	34° 18.582' N	110° 58.216' W	5500
Dip Site	60	34° 18.582' N	110° 58.216' W	5500
Helibase	Valentine Helibase	34° 15.410' N	111° 20.356' W	
Helispot	1	34° 17.683' N	110° 58.492' W	6237
Helispot	2	34° 18.824' N	110° 51.193' W	7300
Helispot	20	34° 18.801' N	110° 52.793' W	6260
Helispot	3	34° 10.842' N	110° 47.936' W	6300
Helispot	30	34° 18.051' N	110° 56.852' W	
Helispot	4	34° 16.472' N	110° 54.660' W	6453
Helispot	50	34° 17.567' N	110° 56.677' W	
Helispot	60	34° 15.452' N	110° 55.805' W	
Helispot	7	34° 13.922' N	110° 58.705' W	
Incident Command Post	Payson RD	34° 14.497' N	111° 08.361' W	

