

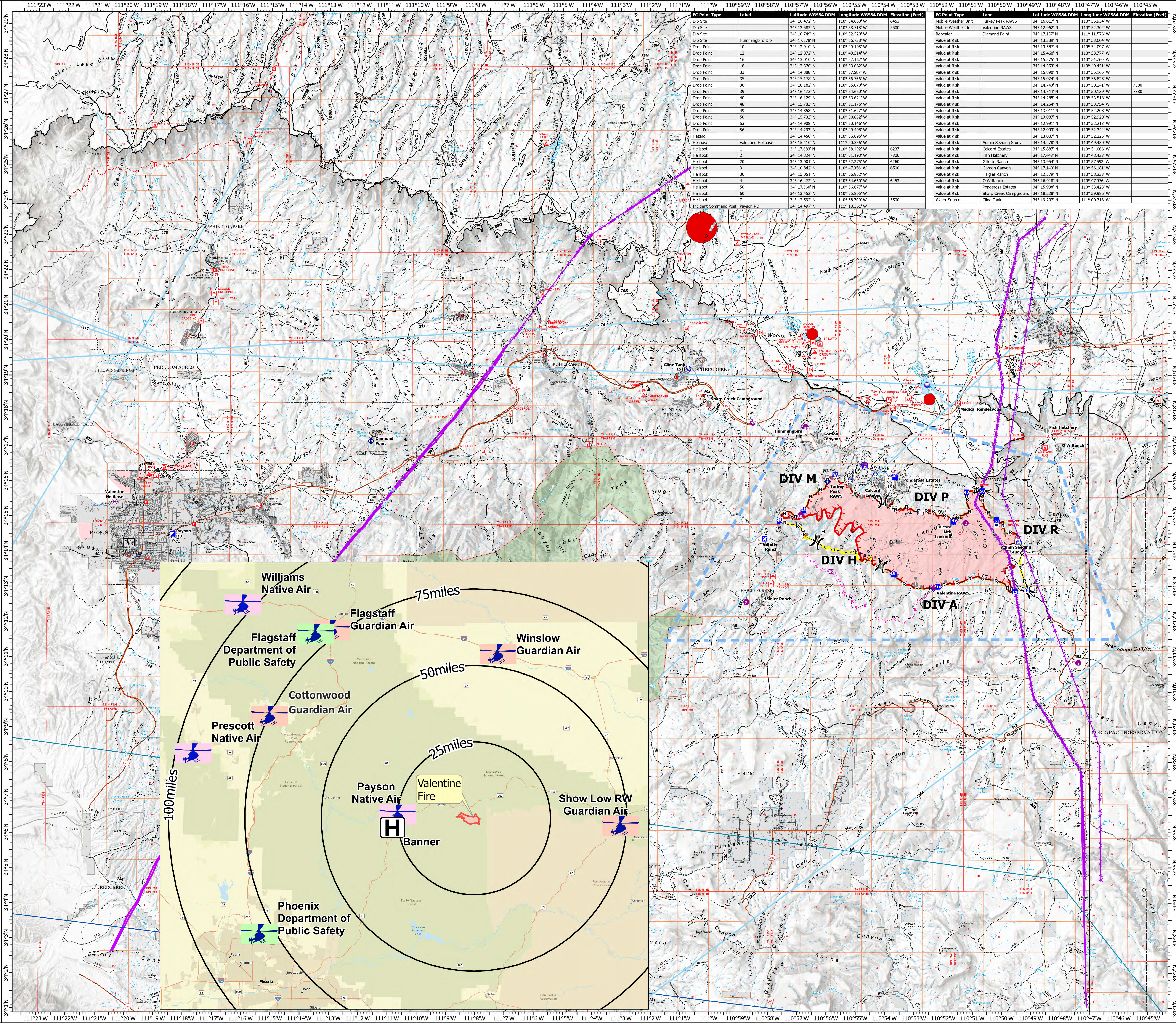
# MEDICAL TRANSPORTATION AVIATION

## Valentine Fire AZ-TNF-1315

### 9/27/2023

8,492 acres at 9/26/2023 @ 1700

- Other Property
- Water Tank
- Dip Site
- Helispot
- Helibase
- Division Break
- Incident Command Post
- Drop Point
- Closure
- Lookout
- Hot Spot - Spot Fire
- Fire Origin
- Value at Risk
- Other
- Mobile Weather Unit
- Repeater
- Hazard
- Water Source
- Completed Dozer Line
- Completed Hand Line
- Completed Mixed Construction Line
- Completed Road as Line
- Planned Dozer Line
- Planned Road as Line
- Access or Improved Road
- Fence
- Highlighted Feature
- Other
- Repair Line
- Aerial Hazard
- Temporary Flight Restriction
- Uncontained
- Wildfire Daily Fire Perimeter
- Completed Fireline
- Rim Lakes Aerial Avoidance 2023
- Wilderness
- Secondary Highway
- Road, Unspecified
- Runways
- Non Forest
- Civil Airport w/o Facilities
- Air Traffic Service Route
- Visual Route
- Visual Route Outer Boundary
- Instrument Route Outer Boundary
- Main Power Line



FC Point Type	Label	Latitude WGS84 DDM	Longitude WGS84 DDM	Elevation (Feet)	FC Point Type	Label	Latitude WGS84 DDM	Longitude WGS84 DDM	Elevation (Feet)
Dip Site	12	34° 12.582' N	110° 58.718' W	5500	Mobile Weather Unit	Valentine RAWS	34° 12.962' N	110° 52.302' W	
Dip Site	10	34° 12.910' N	110° 56.738' W	5500	Repeater	Diamond Point	34° 17.157' N	111° 15.767' W	
Dip Site	16	34° 17.578' N	110° 56.738' W	5500	Value at Risk		34° 13.589' N	110° 54.097' W	
Dip Site	12	34° 12.872' N	110° 54.105' W	5500	Value at Risk		34° 13.460' N	110° 53.777' W	
Dip Site	18	34° 13.370' N	110° 52.152' W	5500	Value at Risk		34° 13.760' N	110° 54.760' W	
Dip Site	33	34° 14.888' N	110° 53.662' W	5500	Value at Risk		34° 14.353' N	110° 49.451' W	
Dip Site	35	34° 15.178' N	110° 57.587' W	5500	Value at Risk		34° 15.890' N	110° 55.165' W	
Dip Site	38	34° 16.182' N	110° 56.766' W	5500	Value at Risk		34° 15.074' N	110° 56.825' W	
Dip Site	39	34° 16.473' N	110° 56.670' W	5500	Value at Risk		34° 14.740' N	110° 50.141' W	7380
Dip Site	40	34° 16.129' N	110° 54.660' W	5500	Value at Risk		34° 14.740' N	110° 50.139' W	7380
Dip Site	48	34° 15.703' N	110° 53.621' W	5500	Value at Risk		34° 14.288' N	110° 53.518' W	
Dip Site	49	34° 14.858' N	110° 51.175' W	5500	Value at Risk		34° 14.254' N	110° 53.754' W	
Dip Site	50	34° 14.858' N	110° 51.627' W	5500	Value at Risk		34° 13.011' N	110° 52.208' W	
Dip Site	53	34° 15.732' N	110° 50.632' W	5500	Value at Risk		34° 13.087' N	110° 52.920' W	
Dip Site	56	34° 14.293' N	110° 50.146' W	5500	Value at Risk		34° 12.991' N	110° 52.213' W	
Dip Site	56	34° 14.293' N	110° 49.408' W	5500	Value at Risk		34° 12.991' N	110° 52.244' W	
Hazard		34° 14.456' N	110° 56.695' W	5500	Value at Risk		34° 13.007' N	110° 52.225' W	
Helibase	Valentine Helibase	34° 15.410' N	111° 20.356' W	5500	Value at Risk	Admin Seeding Study	34° 14.278' N	110° 49.430' W	
Helispot	1	34° 17.683' N	110° 58.492' W	6237	Value at Risk	Colcord Estates	34° 15.887' N	110° 54.066' W	
Helispot	2	34° 14.824' N	110° 51.193' W	7300	Value at Risk	Fish Hatchery	34° 17.443' N	110° 48.423' W	
Helispot	3	34° 13.001' N	110° 52.275' W	6260	Value at Risk	Collette Ranch	34° 13.952' N	110° 52.139' W	
Helispot	3	34° 10.842' N	110° 47.256' W	6500	Value at Risk	Gordon Canyon	34° 17.140' N	110° 56.181' W	
Helispot	30	34° 15.051' N	110° 56.852' W	6453	Value at Risk	Haigler Ranch	34° 12.579' N	110° 58.232' W	
Helispot	4	34° 16.472' N	110° 54.660' W	6453	Value at Risk	O W Ranch	34° 15.918' N	110° 47.976' W	
Helispot	50	34° 17.560' N	110° 56.677' W	6453	Value at Risk	Ponderosa Estates	34° 15.938' N	110° 53.423' W	
Helispot	60	34° 13.452' N	110° 55.805' W	6453	Value at Risk	Sharp Creek Campground	34° 14.228' N	110° 59.986' W	
Helispot	7	34° 12.592' N	110° 58.709' W	6453	Value at Risk	Cine Tank	34° 13.207' N	111° 00.719' W	
Incident Command Post	Payson RD	34° 14.497' N	111° 18.361' W	5500					

