

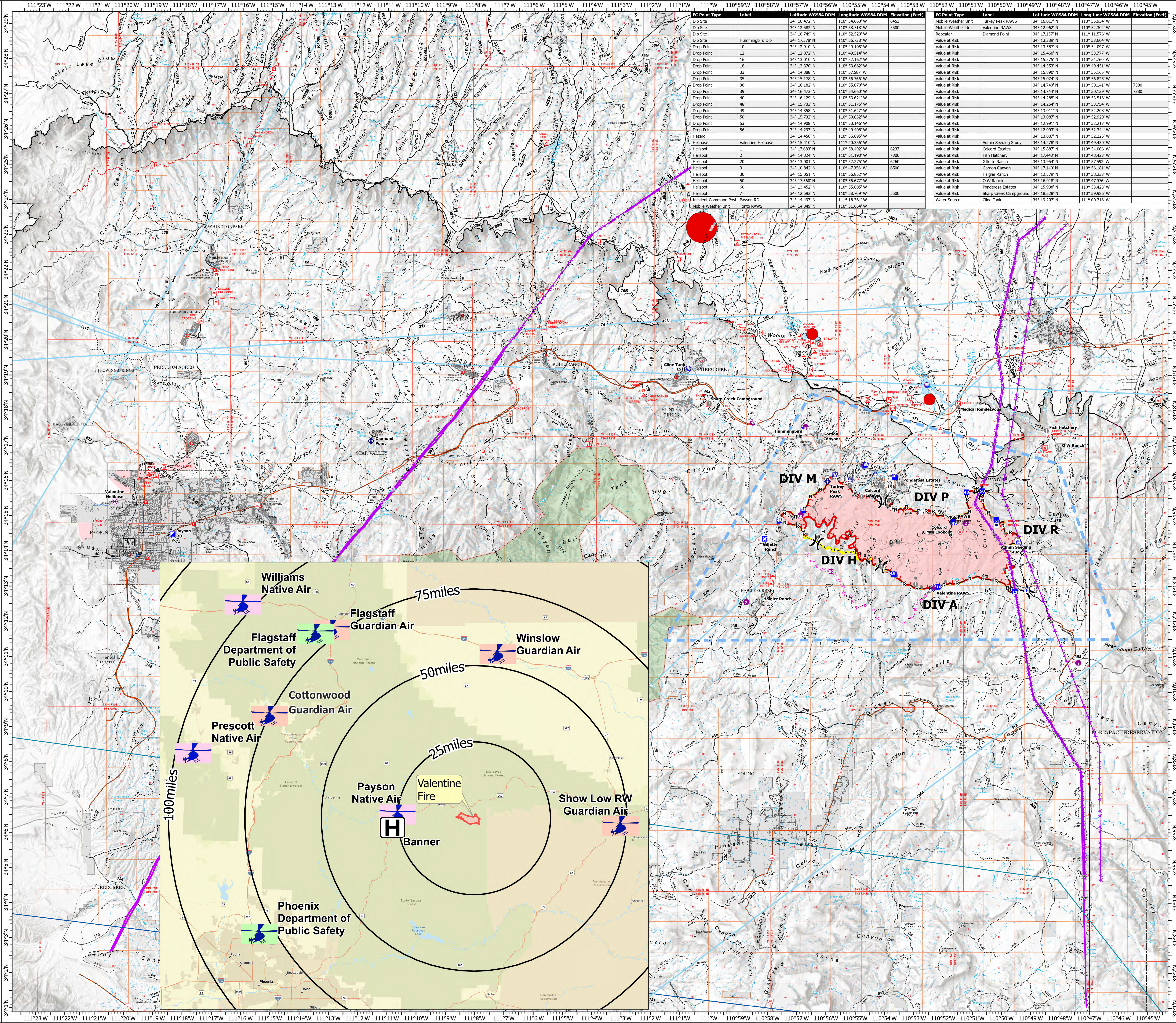
# MEDICAL TRANSPORTATION AVIATION

## Valentine Fire AZ-TNF-1315

### 9/28/2023

9,015 acres at 9/27/2023 @ 1800

- Other Property
- Water Tank
- Dip Site
- Helispot
- Helibase
- Division Break
- Incident Command Post
- Drop Point
- Closure
- Lookout
- Hot Spot - Spot Fire
- Fire Origin
- Value at Risk
- Other
- Mobile Weather Unit
- Repeater
- Hazard
- Water Source
- Completed Dozer Line
- Completed Hand Line
- Completed Mixed Construction Line
- Completed Road as Line
- Planned Dozer Line
- Planned Road as Line
- Access or Improved Road
- Fence
- Highlighted Feature
- Other
- Repair Line
- Aerial Hazard
- Temporary Flight Restriction
- Uncontained
- Wildfire Daily Fire Perimeter
- Fire Containment Line
- Rim Lakes Aerial Avoidance 2023
- Wilderness
- Secondary Highway
- Road, Unspecified
- Runways
- Non Forest
- Civil Airport w/o Facilities
- Air Traffic Service Route
- Visual Route
- Visual Route Outer Boundary
- Instrument Route Outer Boundary
- Main Power Line



FC Point Type	Label	Latitude WGS84 DDM	Longitude WGS84 DDM	Elevation (Feet)	FC Point Type	Label	Latitude WGS84 DDM	Longitude WGS84 DDM	Elevation (Feet)
Dip Site	Dip Site	34° 12.582' N	110° 58.718' W	5500	Mobile Weather Unit	Valentine RAWS	34° 12.962' N	110° 52.302' W	
Dip Site	Dip Site	34° 12.910' N	110° 55.250' W		Repeater	Diamond Point	34° 17.157' N	111° 13.576' W	
Dip Site	Hummingbird Dip	34° 17.578' N	110° 56.738' W		Value at Risk		34° 13.339' N	110° 53.604' W	
Drop Point	10	34° 12.910' N	110° 49.105' W		Value at Risk		34° 13.589' N	110° 54.097' W	
Drop Point	12	34° 12.872' N	110° 53.474' W		Value at Risk		34° 13.460' N	110° 53.777' W	
Drop Point	16	34° 13.010' N	110° 51.182' W		Value at Risk		34° 13.748' N	110° 50.139' W	7380
Drop Point	18	34° 13.370' N	110° 53.662' W		Value at Risk		34° 14.353' N	110° 49.451' W	
Drop Point	33	34° 14.888' N	110° 57.587' W		Value at Risk		34° 15.890' N	110° 55.165' W	
Drop Point	35	34° 15.178' N	110° 56.766' W		Value at Risk		34° 15.074' N	110° 56.825' W	
Drop Point	38	34° 16.182' N	110° 55.670' W		Value at Risk		34° 14.740' N	110° 50.141' W	7380
Drop Point	39	34° 16.473' N	110° 56.660' W		Value at Risk		34° 14.748' N	110° 50.139' W	7380
Drop Point	40	34° 16.120' N	110° 53.621' W		Value at Risk		34° 14.288' N	110° 53.518' W	
Drop Point	48	34° 15.703' N	110° 51.175' W		Value at Risk		34° 14.254' N	110° 53.754' W	
Drop Point	49	34° 14.858' N	110° 51.627' W		Value at Risk		34° 13.011' N	110° 52.208' W	
Drop Point	50	34° 15.732' N	110° 50.632' W		Value at Risk		34° 13.087' N	110° 52.920' W	
Drop Point	53	34° 14.908' N	110° 50.146' W		Value at Risk		34° 12.991' N	110° 52.213' W	
Drop Point	56	34° 14.293' N	110° 50.408' W		Value at Risk		34° 12.920' N	110° 52.344' W	
Hazard		34° 14.456' N	110° 56.695' W		Value at Risk		34° 13.007' N	110° 52.225' W	
Helibase	Valentine Helibase	34° 15.410' N	111° 20.356' W		Value at Risk	Admin Seeding Study	34° 14.278' N	110° 49.430' W	
Helispot	1	34° 17.683' N	110° 58.492' W	6237	Value at Risk	Colcord Estates	34° 15.887' N	110° 54.066' W	
Helispot	2	34° 14.824' N	110° 51.193' W	7300	Value at Risk	Fish Hatchery	34° 17.443' N	110° 48.423' W	
Helispot	20	34° 13.001' N	110° 52.275' W	6260	Value at Risk	Gillette Ranch	34° 13.952' N	110° 52.113' W	
Helispot	3	34° 10.842' N	110° 47.256' W	6500	Value at Risk	Gordon Canyon	34° 17.140' N	110° 56.181' W	
Helispot	30	34° 15.051' N	110° 56.852' W		Value at Risk	Haigler Ranch	34° 12.579' N	110° 58.233' W	
Helispot	50	34° 17.560' N	110° 56.677' W		Value at Risk	O W Ranch	34° 16.918' N	110° 47.976' W	
Helispot	60	34° 13.452' N	110° 55.805' W		Value at Risk	Ponderosa Estates	34° 15.938' N	110° 53.423' W	
Incident Command Post	Payson RD	34° 12.592' N	110° 58.709' W	5500	Value at Risk	Sharp Creek Campground	34° 14.228' N	110° 59.986' W	
Mobile Weather Unit	Torto RAWS	34° 14.849' N	110° 51.664' W		Water Source	Cine Tank	34° 19.207' N	111° 00.719' W	

