

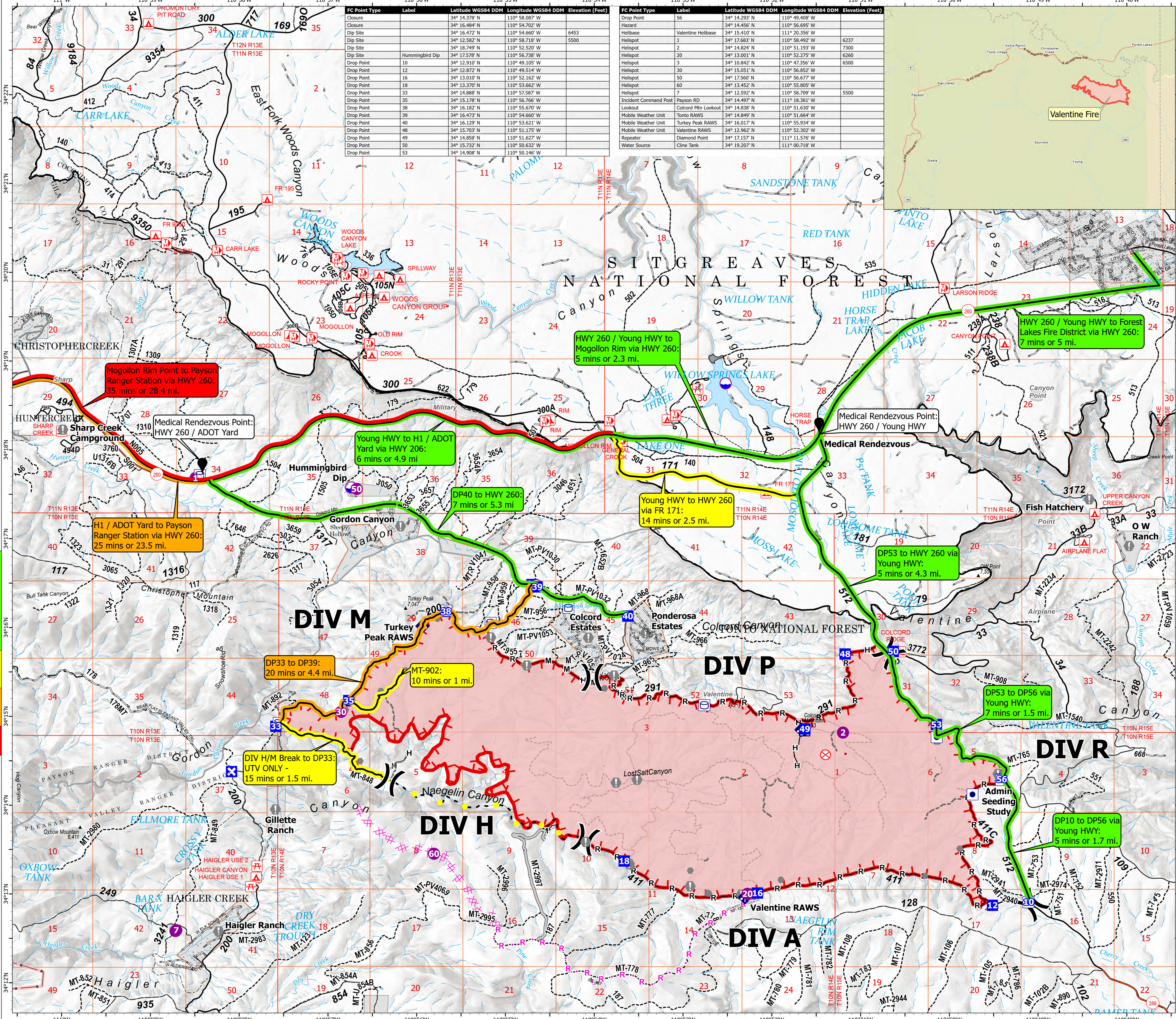
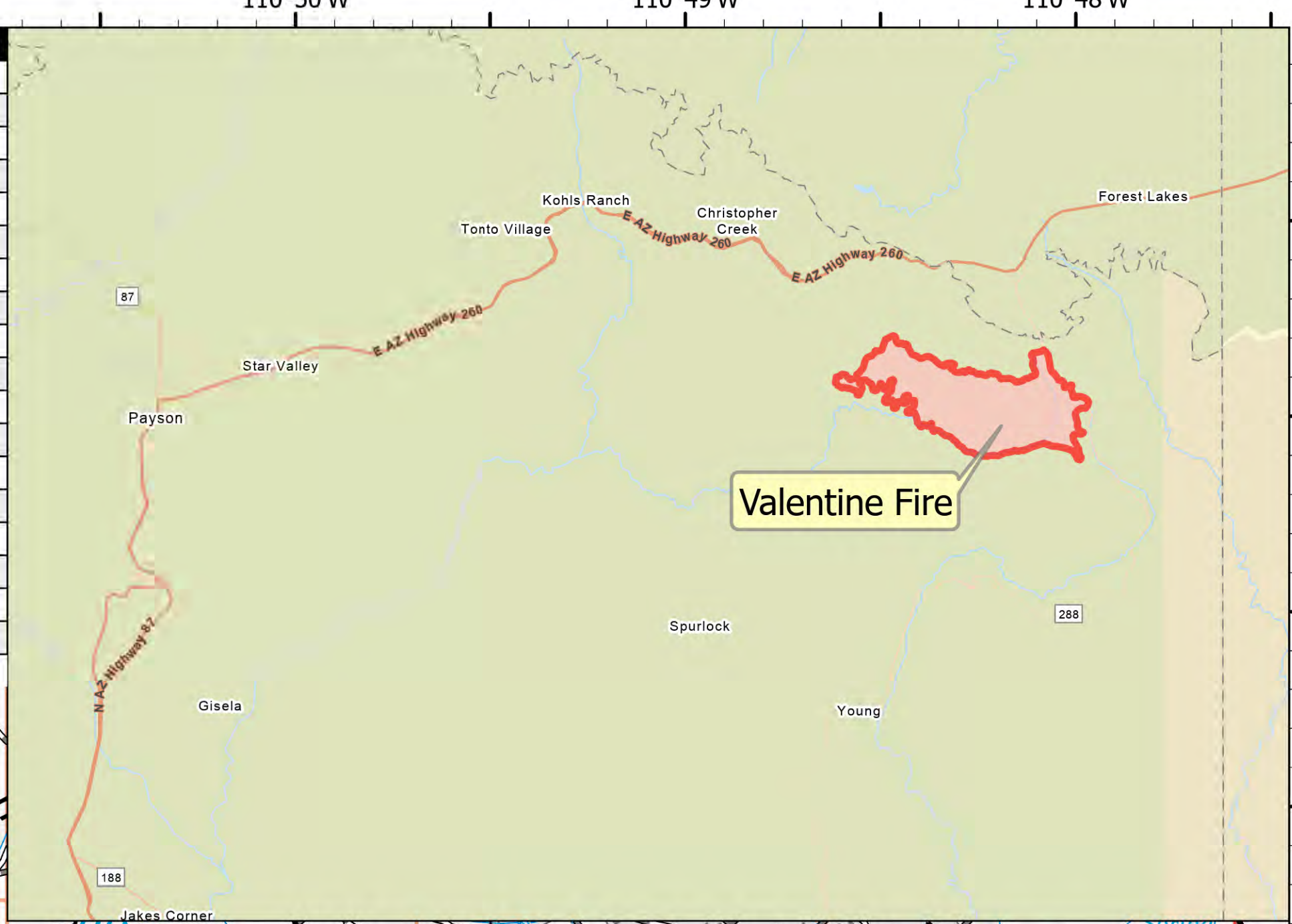
**MEDICAL TRANSPORT**  
**GROUND**  
**Valentine Fire**  
**AZ-TNF-1315**  
**9/28/2023**  
 9,015 acres at 9/27/2023 @ 1800

- Drive Time Category**
- 5-10 minutes
  - 10-15 minutes
  - 20-25 minutes
  - 35+ minutes
- Other Property**
- Water Tank
  - Dip Site
  - Helispot
  - Division Break
  - Drop Point
  - Closure
  - Lookout
  - Hot Spot - Spot Fire
  - Fire Origin
  - Value at Risk
  - Other
  - Mobile Weather Unit
  - Hazard
  - Completed Dozer Line
  - Completed Hand Line
  - Completed Mixed Construction Line
  - Completed Road as Line
  - Planned Dozer Line
  - Planned Road as Line
  - Access or Improved Road
  - Fence
  - Highlighted Feature
  - Other
  - Repair Line
  - Uncontained
  - Wildfire Daily Fire Perimeter

- 5-10 minutes
  - DP10 to DP56 via Young HWY: 5 mins or 1.7 mi.
  - DP56 to DP53 via Young HWY: 7 mins or 1.5 mi.
  - DP53 to HWY 260 via Young HWY: 5 mins or 4.3 mi.
  - DP40 to HWY 260: 7 mins or 5.3 mi.
  - HWY 260 / Young HWY to Forest Lakes Fire District via HWY 260: 7 mins or 5 mi.
  - HWY 260 / Young HWY to Mogollon Rim via HWY 260: 5 mins or 2.3 mi.
  - Young HWY to H1 / ADOT Yard via HWY 260: 6 mins or 4.9 mi.
- 10-15 minutes
  - DIV H/M Break to DP33: UTV ONLY - 15 mins or 1.5 mi.
  - Young HWY to HWY 260 via FR 171: 14 mins or 2.5 mi.
  - MT-902: 10 mins or 1 mi.
- 20-25 minutes
  - DP33 to DP39: 20 mins or 4.4 mi.
  - H1 / ADOT Yard to Payson Ranger Station via HWY 260: 25 mins or 23.5 mi.
- 35+ minutes
  - Mogollon Rim to Payson Ranger Station via HWY 260: 35 mins or 28.4 mi.

FC Point Type	Label	Latitude WGS84 DDM	Longitude WGS84 DDM	Elevation (Feet)
Closure		34° 14.378' N	110° 58.087' W	
Closure		34° 16.484' N	110° 54.702' W	6453
Dip Site		34° 16.472' N	110° 54.660' W	
Dip Site		34° 12.582' N	110° 58.718' W	5500
Dip Site	Hummingbird Dip	34° 17.578' N	110° 56.738' W	
Drop Point	10	34° 12.910' N	110° 49.105' W	
Drop Point	12	34° 12.872' N	110° 49.514' W	
Drop Point	16	34° 13.010' N	110° 52.162' W	
Drop Point	18	34° 13.370' N	110° 53.662' W	
Drop Point	33	34° 14.888' N	110° 57.587' W	
Drop Point	35	34° 15.178' N	110° 56.766' W	
Drop Point	38	34° 16.182' N	110° 55.670' W	
Drop Point	39	34° 16.473' N	110° 54.660' W	
Drop Point	40	34° 16.129' N	110° 53.621' W	
Drop Point	48	34° 15.703' N	110° 51.175' W	
Drop Point	49	34° 14.858' N	110° 51.627' W	
Drop Point	50	34° 15.732' N	110° 50.632' W	
Drop Point	53	34° 14.908' N	110° 50.146' W	

FC Point Type	Label	Latitude WGS84 DDM	Longitude WGS84 DDM	Elevation (Feet)
Drop Point	56	34° 14.293' N	110° 49.408' W	
Hazard		34° 14.456' N	110° 56.695' W	
Helibase	Valentine Helibase	34° 15.410' N	111° 20.356' W	
Helispot	1	34° 12.683' N	110° 58.492' W	6237
Helispot	2	34° 14.824' N	110° 51.193' W	7300
Helispot	20	34° 13.001' N	110° 52.275' W	6260
Helispot	3	34° 10.842' N	110° 47.356' W	6500
Helispot	30	34° 15.051' N	110° 56.852' W	
Helispot	50	34° 17.560' N	110° 56.677' W	
Helispot	60	34° 13.452' N	110° 55.805' W	
Helispot	7	34° 12.592' N	110° 58.709' W	5500
Incident Command Post	Payson RD	34° 14.497' N	111° 18.361' W	
Lookout	Colcord Mtn Lookout	34° 14.838' N	110° 51.630' W	
Mobile Weather Unit	Tonto RAWS	34° 14.849' N	110° 51.664' W	
Mobile Weather Unit	Turkey Peak RAWS	34° 16.017' N	110° 55.934' W	
Mobile Weather Unit	Valentine RAWS	34° 12.962' N	110° 52.302' W	
Repeater	Diamond Point	34° 17.157' N	111° 11.576' W	
Water Source	Cline Tank	34° 19.207' N	111° 00.718' W	



Miles  
0 1 2

Kilometers  
0 1 2