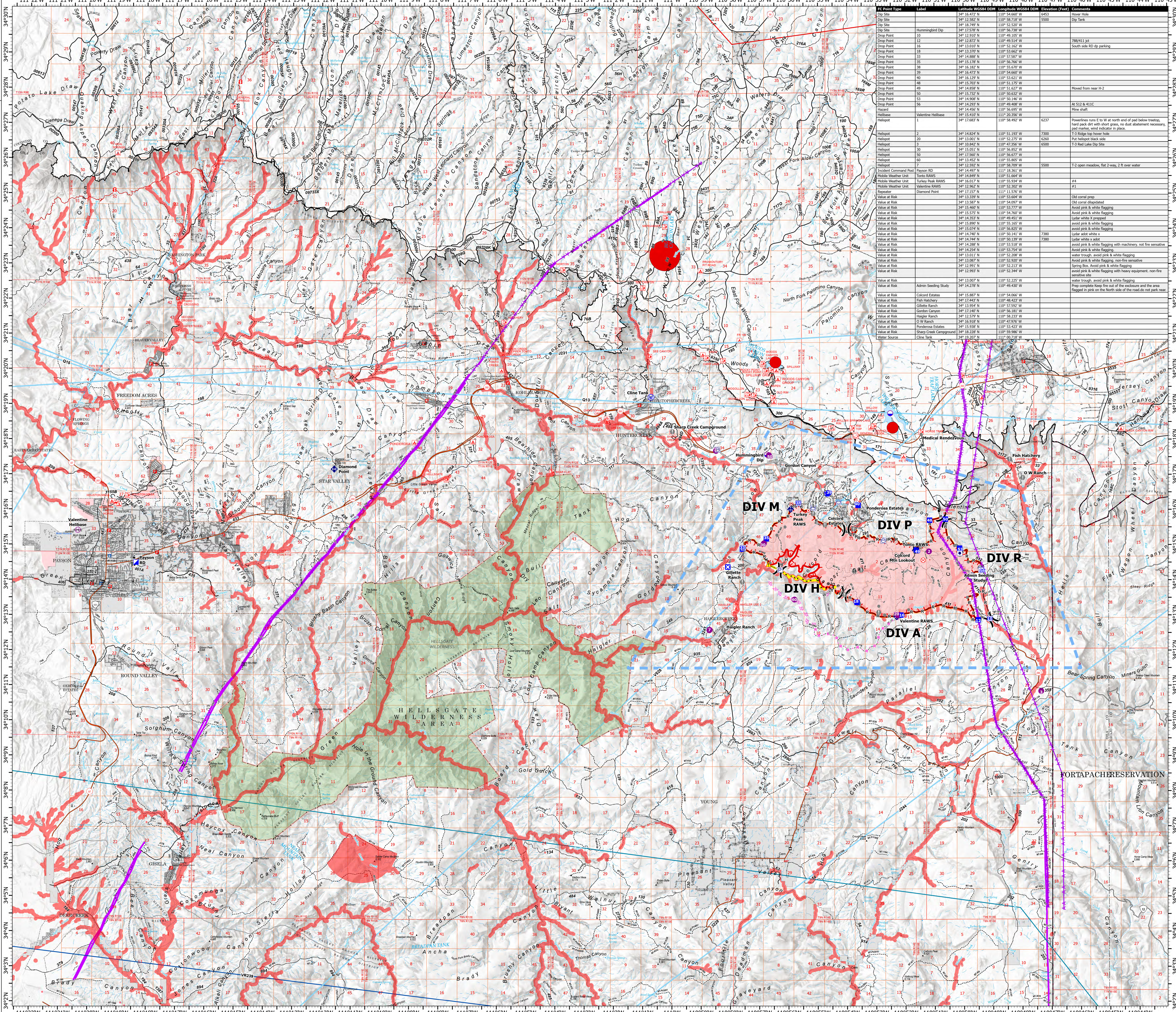


AIR OPERATIONS


Valentine Fire
AZ-TNF-1315
9/29/2023

9,220 acres at 9/28/2023 @ 1700

- Other Property
- Pump
- Water Tank
- Dip Site
- Helipost
- Helibase
- Division Break
- Incident Command Post
- Drop Point
- Closure
- Lookout
- Hot Spot - Spot Fire
- Fire Origin
- Value at Risk
- Other
- Mobile Weather Unit
- Repeater
- Hazard
- Water Source
- Completed Dozer Line
- Completed Hand Line
- Completed Mixed Construction Line
- Completed Road as Line
- Planned Dozer Line
- Planned Road as Line
- Access or Improved Road
- Fence
- Highlighted Feature
- Other
- Repair Line
- Aerial Hazard
- Temporary Flight Restriction
- Uncontained
- Wildfire Daily Fire Perimeter
- Fire Containment Line
- Rim Lakes Aerial Avoidance 2023
- Aerial Fire Retardant Avoidance Area
- Wilderness
- Campground
- Picnic Site
- Trailhead
- Horse Camp
- Interpretive Visitor Center
- Forest Service
- Cemetery
- City / Town Hall
- School (K - 12)
- College / University
- Post Office
- Fire Station / EMS Station
- Hospital / Medical Center
- Law Enforcement
- Court House; State Capitol; US Capitol
- Secondary Highway
- Road, Unspecified
- Trail
- Runways
- USFS Proclaimed Forest Grassland
- USFS Administrative Forest
- USFS Ranger District
- USFS Wilderness
- State Conservation Area
- Nonearthen Shore
- Artificial Path
- Pipeline Underground
- Stream/River
- Stream/River Intermittent
- Dam / Weir
- Wash
- Lake / Pond
- Lake / Pond (Intermittent)
- Reservoir
- PLSS Township
- PLSS Section
- Non Forest
- BIA Tribal Land
- Urban Area
- Civil Airport w/o Facilities
- Air Traffic Service Route
- Visual Route
- Visual Route Outer Boundary
- Instrument Route Outer Boundary
- Main Power Line





Drop Point Type	Label	Latitude (NAD83)	Longitude (NAD83)	Elevation (Feet)	Comments
Dip Site	34	34° 12.582' N	110° 58.718' W	5500	Dip Tank
Dip Site	35	34° 12.582' N	110° 58.718' W	5500	Dip Tank
Dip Site	36	34° 12.582' N	110° 58.718' W	5500	Dip Tank
Dip Site	37	34° 12.582' N	110° 58.718' W	5500	Dip Tank
Dip Site	38	34° 12.582' N	110° 58.718' W	5500	Dip Tank
Dip Site	39	34° 12.582' N	110° 58.718' W	5500	Dip Tank
Dip Site	40	34° 12.582' N	110° 58.718' W	5500	Dip Tank
Dip Site	41	34° 12.582' N	110° 58.718' W	5500	Dip Tank
Dip Site	42	34° 12.582' N	110° 58.718' W	5500	Dip Tank
Dip Site	43	34° 12.582' N	110° 58.718' W	5500	Dip Tank
Dip Site	44	34° 12.582' N	110° 58.718' W	5500	Dip Tank
Dip Site	45	34° 12.582' N	110° 58.718' W	5500	Dip Tank
Dip Site	46	34° 12.582' N	110° 58.718' W	5500	Dip Tank
Dip Site	47	34° 12.582' N	110° 58.718' W	5500	Dip Tank
Dip Site	48	34° 12.582' N	110° 58.718' W	5500	Dip Tank
Dip Site	49	34° 12.582' N	110° 58.718' W	5500	Dip Tank
Dip Site	50	34° 12.582' N	110° 58.718' W	5500	Dip Tank
Dip Site	51	34° 12.582' N	110° 58.718' W	5500	Dip Tank
Dip Site	52	34° 12.582' N	110° 58.718' W	5500	Dip Tank
Dip Site	53	34° 12.582' N	110° 58.718' W	5500	Dip Tank
Dip Site	54	34° 12.582' N	110° 58.718' W	5500	Dip Tank
Dip Site	55	34° 12.582' N	110° 58.718' W	5500	Dip Tank
Dip Site	56	34° 12.582' N	110° 58.718' W	5500	Dip Tank
Dip Site	57	34° 12.582' N	110° 58.718' W	5500	Dip Tank
Dip Site	58	34° 12.582' N	110° 58.718' W	5500	Dip Tank
Dip Site	59	34° 12.582' N	110° 58.718' W	5500	Dip Tank
Dip Site	60	34° 12.582' N	110° 58.718' W	5500	Dip Tank
Helibase	Valentine Helibase	34° 15.410' N	110° 20.590' W		Wire shaft
Helibase	Valentine Helibase	34° 17.683' N	110° 58.492' W	6237	Cover hole
Helibase	2	34° 14.604' N	110° 51.180' W	7200	T3 Ridge top tower hole
Helibase	20	34° 13.001' N	110° 52.270' W	6200	Pat helibase back side
Helibase	30	34° 10.842' N	110° 47.356' W	6500	T-3 Radar Lake Site
Helibase	33	34° 13.917' N	110° 52.782' W		
Helibase	50	34° 13.960' N	110° 56.077' W		
Helibase	60	34° 13.452' N	110° 55.805' W		
Helibase	7	34° 12.592' N	110° 58.709' W	5500	T-2 open meadow, flat 2-way, 2 ft over water
Helibase	2	34° 14.604' N	110° 51.180' W		
Mobile Weather Unit	Tonto RAWS	34° 14.849' N	110° 51.664' W		
Mobile Weather Unit	Turkey Peak RAWS	34° 16.017' N	110° 55.534' W		#1
Mobile Weather Unit	Valentine RAWS	34° 13.960' N	110° 56.077' W		
Repeater	Diamond Point	34° 17.157' N	111° 11.576' W		
Value at Risk	34	34° 13.397' N	110° 53.604' W		Old coral prmp
Value at Risk	35	34° 13.397' N	110° 53.604' W		Old coral prmp
Value at Risk	36	34° 13.397' N	110° 53.604' W		Old coral prmp
Value at Risk	37	34° 13.397' N	110° 53.604' W		Old coral prmp
Value at Risk	38	34° 13.397' N	110° 53.604' W		Old coral prmp
Value at Risk	39	34° 13.397' N	110° 53.604' W		Old coral prmp
Value at Risk	40	34° 13.397' N	110° 53.604' W		Old coral prmp
Value at Risk	41	34° 13.397' N	110° 53.604' W		Old coral prmp
Value at Risk	42	34° 13.397' N	110° 53.604' W		Old coral prmp
Value at Risk	43	34° 13.397' N	110° 53.604' W		Old coral prmp
Value at Risk	44	34° 13.397' N	110° 53.604' W		Old coral prmp
Value at Risk	45	34° 13.397' N	110° 53.604' W		Old coral prmp
Value at Risk	46	34° 13.397' N	110° 53.604' W		Old coral prmp
Value at Risk	47	34° 13.397' N	110° 53.604' W		Old coral prmp
Value at Risk	48	34° 13.397' N	110° 53.604' W		Old coral prmp
Value at Risk	49	34° 13.397' N	110° 53.604' W		Old coral prmp
Value at Risk	50	34° 13.397' N	110° 53.604' W		Old coral prmp
Value at Risk	51	34° 13.397' N	110° 53.604' W		Old coral prmp
Value at Risk	52	34° 13.397' N	110° 53.604' W		Old coral prmp
Value at Risk	53	34° 13.397' N	110° 53.604' W		Old coral prmp
Value at Risk	54	34° 13.397' N	110° 53.604' W		Old coral prmp
Value at Risk	55	34° 13.397' N	110° 53.604' W		Old coral prmp
Value at Risk	56	34° 13.397' N	110° 53.604' W		Old coral prmp
Value at Risk	57	34° 13.397' N	110° 53.604' W		Old coral prmp
Value at Risk	58	34° 13.397' N	110° 53.604' W		Old coral prmp
Value at Risk	59	34° 13.397' N	110° 53.604' W		Old coral prmp
Value at Risk	60	34° 13.397' N	110° 53.604' W		Old coral prmp
Value at Risk	61	34° 13.397' N	110° 53.604' W		Old coral prmp
Value at Risk	62	34° 13.397' N	110° 53.604' W		Old coral prmp
Value at Risk	63	34° 13.397' N	110° 53.604' W		Old coral prmp
Value at Risk	64	34° 13.397' N	110° 53.604' W		Old coral prmp
Value at Risk	65	34° 13.397' N	110° 53.604' W		Old coral prmp
Value at Risk	66	34° 13.397' N	110° 53.604' W		Old coral prmp
Value at Risk	67	34° 13.397' N	110° 53.604' W		Old coral prmp
Value at Risk	68	34° 13.397' N	110° 53.604' W		Old coral prmp
Value at Risk	69	34° 13.397' N	110° 53.604' W		Old coral prmp
Value at Risk	70	34° 13.397' N	110° 53.604' W		Old coral prmp
Value at Risk	71	34° 13.397' N	110° 53.604' W		Old coral prmp
Value at Risk	72	34° 13.397' N	110° 53.604' W		Old coral prmp
Value at Risk	73	34° 13.397' N	110° 53.604' W		Old coral prmp
Value at Risk	74	34° 13.397' N	110° 53.604' W		Old coral prmp
Value at Risk	75	34° 13.397' N	110° 53.604' W		Old coral prmp
Value at Risk	76	34° 13.397' N	110° 53.604' W		Old coral prmp
Value at Risk	77	34° 13.397' N	110° 53.604' W		Old coral prmp
Value at Risk	78	34° 13.397' N	110° 53.604' W		Old coral prmp
Value at Risk	79	34° 13.397' N	110° 53.604' W		Old coral prmp
Value at Risk	80	34° 13.397' N	110° 53.604' W		Old coral prmp
Value at Risk	81	34° 13.397' N	110° 53.604' W		Old coral prmp
Value at Risk	82	34° 13.397' N	110° 53.604' W		Old coral prmp
Value at Risk	83	34° 13.397' N	110° 53.604' W		Old coral prmp
Value at Risk	84	34° 13.397' N	110° 53.604' W		Old coral prmp
Value at Risk	85	34° 13.397' N	110° 53.604' W		Old coral prmp
Value at Risk	86	34° 13.397' N	110° 53.604' W		Old coral prmp
Value at Risk	87	34° 13.397' N	110° 53.604' W		Old coral prmp
Value at Risk	88	34° 13.397' N	110° 53.604' W		Old coral prmp
Value at Risk	89	34° 13.397' N	110° 53.604' W		Old coral prmp
Value at Risk	90	34° 13.397' N	110° 53.604' W		Old coral prmp
Value at Risk	91	34° 13.397' N	110° 53.604' W		Old coral prmp
Value at Risk	92	34° 13.397' N	110° 53.604' W		Old coral prmp
Value at Risk	93	34° 13.397' N	110° 53.604' W		Old coral prmp
Value at Risk	94	34° 13.397' N	110° 53.604' W		Old coral prmp
Value at Risk	95	34° 13.397' N	110° 53.604' W		Old coral prmp
Value at Risk	96	34° 13.397' N	110° 53.604' W		Old coral prmp
Value at Risk	97	34° 13.397' N	110° 53.604' W		Old coral prmp
Value at Risk	98	34° 13.397' N	110° 53.604' W		Old coral prmp
Value at Risk	99	34° 13.397' N	110° 53.604' W		Old coral prmp
Value at Risk	100	34° 13.397' N	110° 53.604' W		Old coral prmp



Miles
0 1 2 4

Kilometers
0 1 2 4



1:60,000 - Tonto GIS - 9/28/2023 1753
Acres from R and GPS
North American 1983 Datum, LatLong Grid