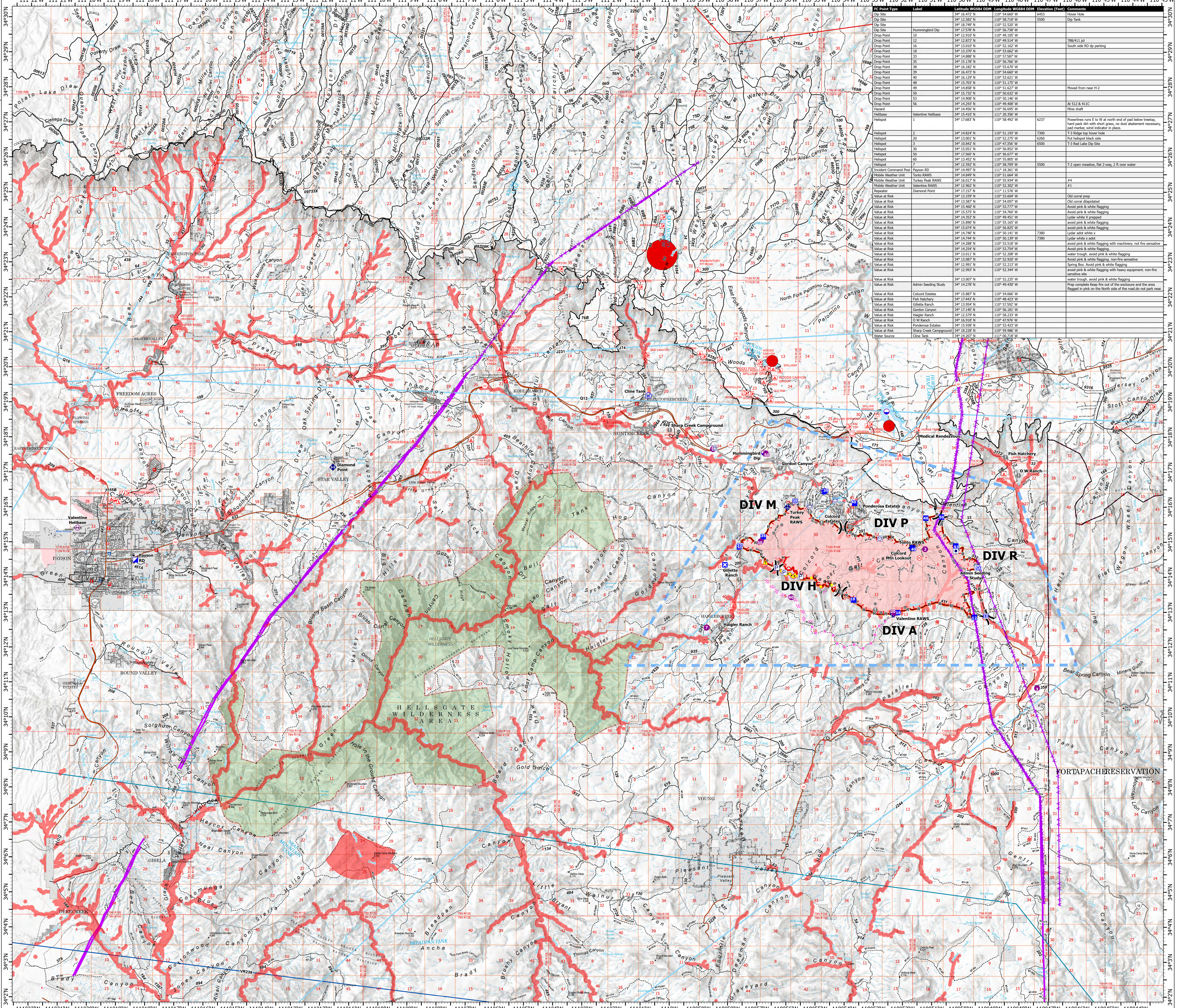
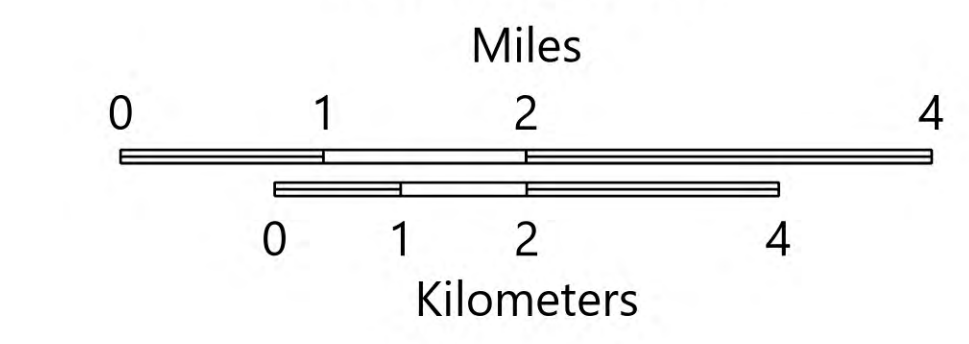


# AIR OPERATIONS

Valentine Fire  
AZ-TNF-1315  
10/2/2023

9,541 acres at 9/30/2023 @ 1700

- Other Property
- Pump
- Water Tank
- Dip Site
- Helispot
- Helibase
- Division Break
- Incident Command Post
- Drop Point
- Closure
- Lookout
- Hot Spot - Spot Fire
- Fire Origin
- Value at Risk
- Other
- Mobile Weather Unit
- Repeater
- Hazard
- Water Source
- Completed Dozer Line
- Completed Hand Line
- Completed Mixed Construction Line
- Completed Road as Line
- Planned Dozer Line
- Planned Road as Line
- Access or Improved Road
- Fence
- Highlighted Feature
- Other
- Repair Line
- Aerial Hazard
- Temporary Flight Restriction
- Uncontained
- Wildfire Daily Fire Perimeter
- Fire Containment Line
- Rim Lakes Aerial Avoidance 2023
- Aerial Fire Retardant Avoidance Area
- Wilderness
- Campground
- Picnic Site
- Trailhead
- Horse Camp
- Interpretive Visitor Center
- Forest Service
- Cemetery
- City / Town Hall
- School (K - 12)
- College / University
- Post Office
- Fire Station / EMS Station
- Hospital / Medical Center
- Law Enforcement
- Court House; State Capitol; US Capitol
- Secondary Highway
- Road, Unspecified
- Trail
- Runways
- USFS Proclaimed Forest Grassland
- USFS Administrative Forest
- USFS Ranger District
- USFS Wilderness
- State Conservation Area
- Nonearthen Shore
- Artificial Path
- Pipeline Underground
- Stream/River
- Stream/River Intermittent
- Dam / Weir
- Wash
- Lake / Pond
- Lake / Pond (Intermittent)
- Reservoir
- PLSS Township
- PLSS Section
- Non Forest
- BIA Tribal Land
- Urban Area
- Civil Airport w/o Facilities
- Air Traffic Service Route
- Visual Route
- Visual Route Outer Boundary
- Instrument Route Outer Boundary
- Main Power Line



Point Type	Label	Latitude (NAD83)	Longitude (NAD83)	Elevation (Feet)	Comments
Dip Site	34	34° 12.582' N	110° 58.718' W	5500	Dip Tank
Dip Site	35	34° 12.582' N	110° 58.718' W	5500	Dip Tank
Hummingbird Dip	10	34° 12.910' N	110° 49.105' W		
Drop Point	12	34° 13.277' N	110° 49.514' W		788411 pit
Drop Point	15	34° 13.910' N	110° 49.514' W		South side RD dip parking
Drop Point	18	34° 13.370' N	110° 53.662' W		
Drop Point	33	34° 14.888' N	110° 57.587' W		
Drop Point	35	34° 15.255' N	110° 56.255' W		
Drop Point	38	34° 16.182' N	110° 55.570' W		
Drop Point	39	34° 16.473' N	110° 54.669' W		
Drop Point	40	34° 16.910' N	110° 53.910' W		
Drop Point	48	34° 15.703' N	110° 51.175' W		
Drop Point	49	34° 14.888' N	110° 51.627' W		Moved from near H-2
Drop Point	50	34° 15.255' N	110° 50.522' W		
Drop Point	53	34° 14.908' N	110° 50.140' W		
Drop Point	56	34° 14.293' N	110° 49.408' W		At 512 & 411C
Helibase	Valentine Helibase	34° 15.410' N	110° 20.590' W		Wire shaft
Helispot	1	34° 17.683' N	110° 58.492' W	6237	Cover hole
Helispot	2	34° 14.694' N	110° 51.180' W	7200	T3 Ridge top tower hole
Helispot	20	34° 13.200' N	110° 52.220' W	6200	Put helispot back side
Helispot	30	34° 10.842' N	110° 47.356' W	6500	T-3 Red Lake Dip Site
Helispot	35	34° 12.910' N	110° 49.105' W		
Helispot	60	34° 13.452' N	110° 55.805' W		
Helispot	7	34° 12.592' N	110° 58.709' W	5500	T-2 open meadow, flat 2-way, 2 ft over water
Incident Command Post	Payson RD	111° 18.262' W	111° 18.262' W		
Mobile Weather Unit	Tonto RAWS	34° 14.849' N	110° 51.664' W		
Mobile Weather Unit	Turkey Peak RAWS	34° 16.017' N	110° 55.534' W		#1
Mobile Weather Unit	3	34° 13.910' N	110° 52.220' W		
Repeater	Diamond Point	34° 17.157' N	111° 11.570' W		
Value at Risk	34	34° 13.370' N	110° 53.662' W		Old coral pump
Value at Risk	35	34° 13.910' N	110° 54.000' W		Old coral observation
Value at Risk	36	34° 15.460' N	110° 53.777' W		Avoid pink & white flagging
Value at Risk	37	34° 15.575' N	110° 54.767' W		Avoid pink & white flagging
Value at Risk	38	34° 14.888' N	110° 49.514' W		Lidlar white x adoc
Value at Risk	39	34° 15.890' N	110° 55.160' W		avoid pink & white flagging
Value at Risk	40	34° 15.074' N	110° 56.820' W		avoid pink & white flagging
Value at Risk	41	34° 14.746' N	110° 50.140' W	7380	Lidlar adoc white x
Value at Risk	42	34° 14.746' N	110° 50.140' W	7380	Lidlar white x adoc
Value at Risk	43	34° 14.288' N	110° 53.518' W		avoid pink & white flagging with machinery, not fire sensitive
Value at Risk	44	34° 14.288' N	110° 53.518' W		avoid pink & white flagging
Value at Risk	45	34° 13.011' N	110° 52.200' W		water trough, avoid pink & white flagging
Value at Risk	46	34° 13.087' N	110° 52.920' W		Avoid pink & white flagging
Value at Risk	47	34° 12.991' N	110° 52.213' W		Sprink Box. Avoid pink & white flagging
Value at Risk	48	34° 12.991' N	110° 52.213' W		avoid pink & white flagging with heavy equipment, non-fire sensitive site
Value at Risk	49	34° 13.007' N	110° 52.232' W		water trough, avoid pink & white flagging
Value at Risk	50	34° 14.226' N	110° 49.430' W		Prep complete keep fire out of the enclosure and the area flagged in pink on the North side of the road do not park near
Value at Risk	51	34° 15.887' N	110° 54.060' W		
Value at Risk	52	34° 17.443' N	110° 48.423' W		
Value at Risk	53	34° 13.954' N	110° 57.972' W		
Value at Risk	54	34° 12.910' N	110° 56.255' W		
Value at Risk	55	34° 12.579' N	110° 58.233' W		
Value at Risk	56	34° 15.918' N	110° 47.976' W		
Value at Risk	57	34° 15.838' N	110° 53.838' W		
Value at Risk	58	34° 18.228' N	110° 59.989' W		
Water Source	Sharp Creek Campground	34° 19.307' N	111° 03.718' W		
Cline Tank	3	34° 13.007' N	110° 52.232' W		
Admin Seeding Study	3	34° 14.226' N	110° 49.430' W		
Colcord Estates	3	34° 15.887' N	110° 54.060' W		
Fish Hatchery	3	34° 17.443' N	110° 48.423' W		
Gillette Ranch	3	34° 13.954' N	110° 57.972' W		
Gordon Canyon	3	34° 12.910' N	110° 56.255' W		
Haigler Ranch	3	34° 12.579' N	110° 58.233' W		
O W Ranch	3	34° 15.918' N	110° 47.976' W		
Phonodora Estates	3	34° 15.838' N	110° 53.838' W		
Sharp Creek Campground	3	34° 18.228' N	110° 59.989' W		
Water Source	Sharp Creek Campground	34° 19.307' N	111° 03.718' W		