

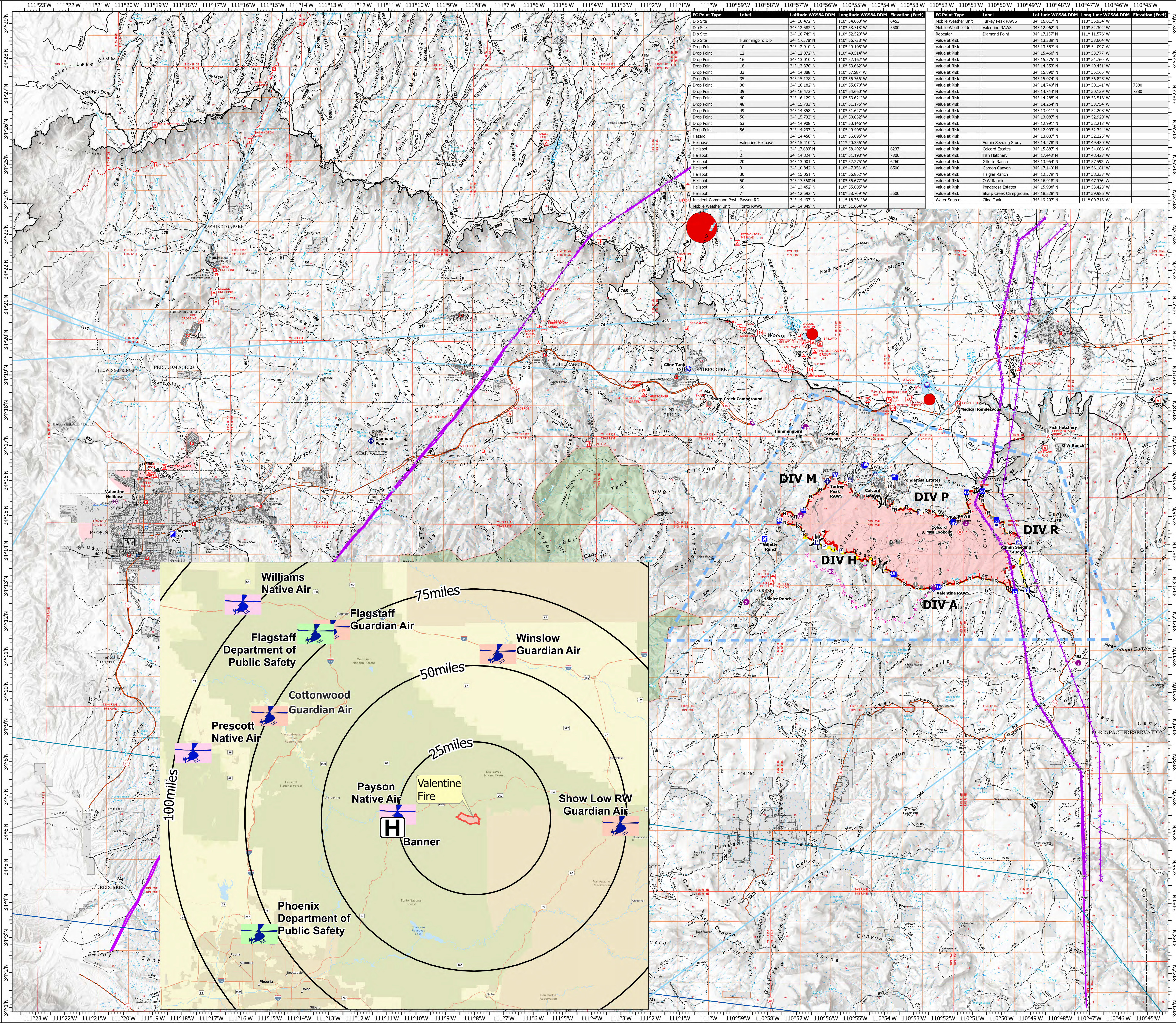
MEDICAL TRANSPORTATION AVIATION

Valentine Fire AZ-TNF-1315

10/2/2023

9,541 acres at 9/30/2023 @ 1700

- Other Property
- Pump
- Water Tank
- Dip Site
- Helispot
- Helibase
- Division Break
- Incident Command Post
- Drop Point
- Closure
- Lookout
- Hot Spot - Spot Fire
- Fire Origin
- Value at Risk
- Other
- Mobile Weather Unit
- Repeater
- Hazard
- Water Source
- Completed Dozer Line
- Completed Hand Line
- Completed Mixed Construction Line
- Completed Road as Line
- Planned Dozer Line
- Planned Road as Line
- Access or Improved Road
- Fence
- Highlighted Feature
- Other
- Repair Line
- Aerial Hazard
- Temporary Flight Restriction
- Uncontained
- Wildfire Daily Fire Perimeter
- Completed Fireline
- Rim Lakes Aerial Avoidance 2023
- Wilderness
- Secondary Highway
- Road, Unspecified
- Runways
- Non Forest
- Civil Airport w/o Facilities
- Air Traffic Service Route
- Visual Route
- Visual Route Outer Boundary
- Instrument Route Outer Boundary
- Main Power Line



FC Point Type	Label	Latitude WGS84 DDM	Longitude WGS84 DDM	Elevation (Feet)
Dip Site	12	34° 12.882' N	110° 58.718' W	5500
Dip Site	10	34° 12.910' N	110° 58.718' W	5500
Dip Site	16	34° 13.179' N	110° 58.718' W	5500
Dip Site	Hummingbird Dip	34° 17.578' N	110° 56.738' W	
Drop Point	33	34° 12.910' N	110° 56.738' W	
Drop Point	12	34° 12.872' N	110° 56.738' W	
Drop Point	16	34° 13.010' N	110° 56.738' W	
Drop Point	18	34° 13.370' N	110° 56.738' W	
Drop Point	33	34° 14.888' N	110° 57.587' W	
Drop Point	35	34° 15.178' N	110° 56.766' W	
Drop Point	38	34° 16.182' N	110° 56.670' W	
Drop Point	39	34° 16.473' N	110° 56.660' W	
Drop Point	40	34° 16.129' N	110° 53.621' W	
Drop Point	48	34° 15.703' N	110° 51.175' W	
Drop Point	49	34° 14.858' N	110° 51.627' W	
Drop Point	50	34° 15.732' N	110° 50.632' W	
Drop Point	53	34° 14.908' N	110° 50.146' W	
Drop Point	56	34° 14.293' N	110° 49.408' W	
Hazard		34° 14.456' N	110° 56.695' W	
Helibase	Valentine Helibase	34° 15.410' N	111° 20.356' W	
Helispot	1	34° 17.683' N	110° 58.492' W	6237
Helispot	2	34° 14.824' N	110° 51.193' W	7300
Helispot	200	34° 13.001' N	110° 52.275' W	6260
Helispot	3	34° 10.842' N	110° 47.256' W	6500
Helispot	30	34° 15.051' N	110° 56.852' W	
Helispot	50	34° 17.560' N	110° 56.657' W	
Helispot	60	34° 13.452' N	110° 55.805' W	
Helispot	7	34° 12.592' N	110° 58.709' W	5500
Incident Command Post	Payson RD	34° 14.492' N	111° 18.361' W	
Mobile Weather Unit	Torto RAWS	34° 14.849' N	110° 51.664' W	

FC Point Type	Label	Latitude WGS84 DDM	Longitude WGS84 DDM	Elevation (Feet)
Mobile Weather Unit	Turkey Peak RAWS	34° 12.962' N	110° 52.302' W	
Repeater	Valentine RAWS	34° 17.157' N	111° 15.176' W	
Value at Risk	Diamond Point	34° 13.339' N	110° 53.604' W	
Value at Risk	10	34° 13.589' N	110° 54.097' W	
Value at Risk		34° 13.460' N	110° 53.777' W	
Value at Risk		34° 13.748' N	110° 50.139' W	7380
Value at Risk		34° 14.353' N	110° 49.451' W	
Value at Risk		34° 15.890' N	110° 55.165' W	
Value at Risk		34° 15.074' N	110° 56.825' W	
Value at Risk		34° 14.740' N	110° 50.141' W	
Value at Risk		34° 13.748' N	110° 50.139' W	7380
Value at Risk		34° 14.288' N	110° 53.518' W	
Value at Risk		34° 14.254' N	110° 53.754' W	
Value at Risk		34° 13.011' N	110° 52.208' W	
Value at Risk		34° 13.087' N	110° 52.920' W	
Value at Risk		34° 12.991' N	110° 52.213' W	
Value at Risk		34° 12.991' N	110° 52.213' W	
Value at Risk		34° 13.007' N	110° 52.225' W	
Value at Risk	Admin Seeding Study	34° 14.278' N	110° 49.430' W	
Value at Risk	Colcord Estates	34° 15.887' N	110° 54.066' W	
Value at Risk	Fish Hatchery	34° 17.443' N	110° 48.423' W	
Value at Risk	Collette Ranch	34° 13.952' N	110° 52.137' W	
Value at Risk	Gordon Canyon	34° 17.140' N	110° 56.181' W	
Value at Risk	Haigler Ranch	34° 12.579' N	110° 58.233' W	
Value at Risk	O W Ranch	34° 16.918' N	110° 47.976' W	
Value at Risk	Ponderosa Estates	34° 15.938' N	110° 53.423' W	
Value at Risk	Sharp Creek Campground	34° 14.228' N	110° 59.986' W	
Water Source	Cine Tank	34° 19.207' N	111° 00.719' W	

