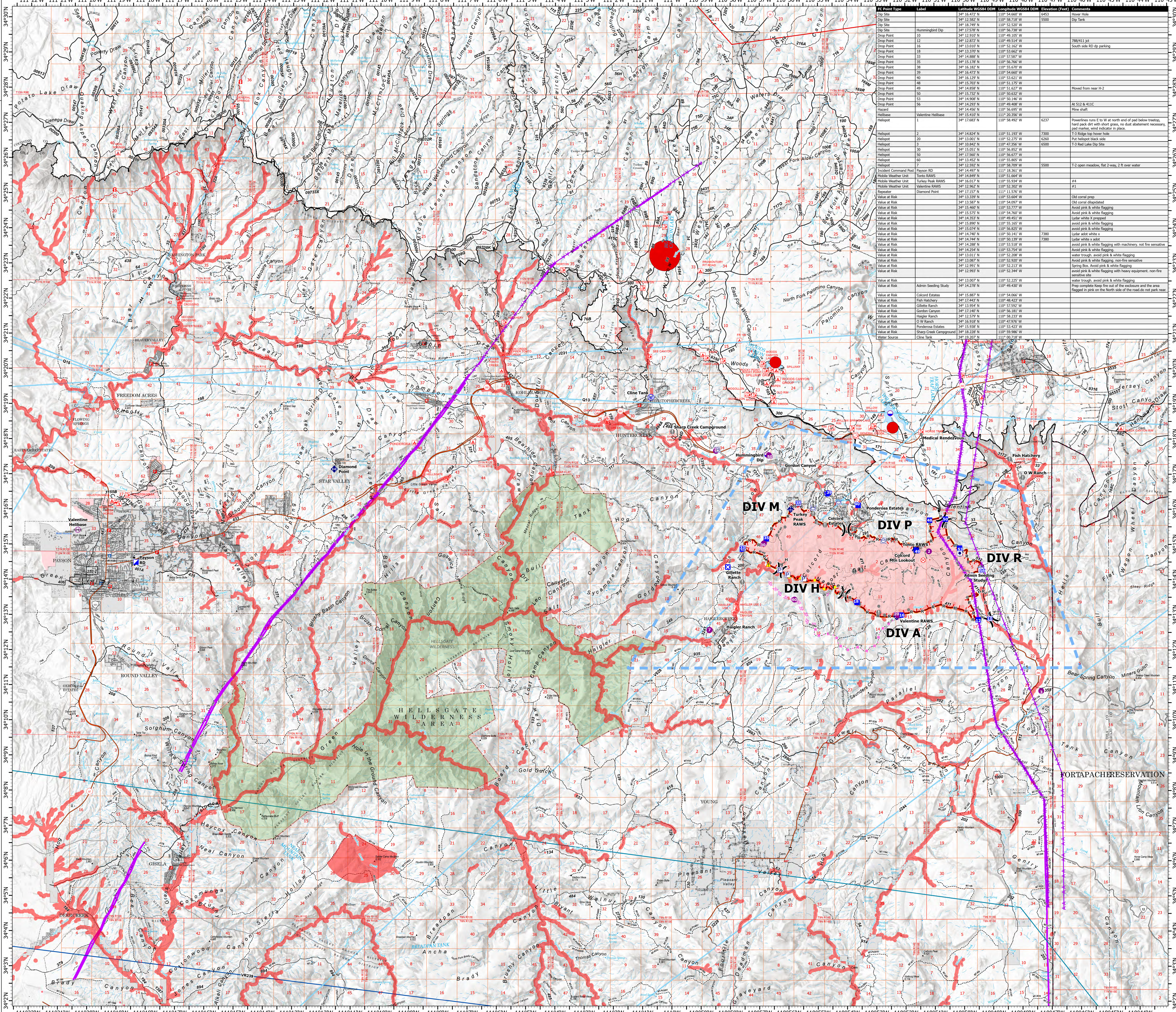


AIR OPERATIONS


Valentine Fire
AZ-TNF-1315
10/3/2023

9,644 acres at 10/2/2023 @ 2000

- Other Property
- Pump
- Water Tank
- Dip Site
- Helipost
- Helibase
- Division Break
- Incident Command Post
- Drop Point
- Closure
- Lookout
- Hot Spot - Spot Fire
- Value at Risk
- Other
- Mobile Weather Unit
- Repeater
- Hazard
- Water Source
- Completed Dozer Line
- Completed Hand Line
- Completed Mixed Construction Line
- Completed Road as Line
- Planned Dozer Line
- Planned Road as Line
- Access or Improved Road
- Fence
- Highlighted Feature
- Other
- Repair Line
- Aerial Hazard
- Temporary Flight Restriction
- Uncontained
- Wildfire Daily Fire Perimeter
- Fire Containment Line
- Rim Lakes Aerial Avoidance 2023
- Aerial Fire Retardant Avoidance Area
- Wilderness
- Campground
- Picnic Site
- Trailhead
- Horse Camp
- Interpretive Visitor Center
- Forest Service
- Cemetery
- City / Town Hall
- School (K - 12)
- College / University
- Post Office
- Fire Station / EMS Station
- Hospital / Medical Center
- Law Enforcement
- Court House; State Capitol; US Capitol
- Secondary Highway
- Road, Unspecified
- Trail
- Runways
- USFS Proclaimed Forest Grassland
- USFS Administrative Forest
- USFS Ranger District
- USFS Wilderness
- State Conservation Area
- Nonearthen Shore
- Artificial Path
- Pipeline Underground
- Stream/River
- Stream/River Intermittent
- Dam / Weir
- Wash
- Lake / Pond
- Lake / Pond (Intermittent)
- Reservoir
- PLSS Township
- PLSS Section
- Non Forest
- BIA Tribal Land
- Urban Area
- Civil Airport w/o Facilities
- Air Traffic Service Route
- Visual Route
- Visual Route Outer Boundary
- Instrument Route Outer Boundary
- Main Power Line





Point Type	Label	Latitude (NAD83)	Longitude (NAD83)	Elevation (Feet)	Comments
Dip Site	34	34° 12.582' N	110° 58.718' W	5500	Dip Tank
Dip Site	35	34° 12.582' N	110° 58.718' W	5500	Dip Tank
Dip Site	36	34° 12.582' N	110° 58.718' W	5500	Dip Tank
Dip Site	37	34° 12.582' N	110° 58.718' W	5500	Dip Tank
Dip Site	38	34° 12.582' N	110° 58.718' W	5500	Dip Tank
Dip Site	39	34° 12.582' N	110° 58.718' W	5500	Dip Tank
Dip Site	40	34° 12.582' N	110° 58.718' W	5500	Dip Tank
Dip Site	41	34° 12.582' N	110° 58.718' W	5500	Dip Tank
Dip Site	42	34° 12.582' N	110° 58.718' W	5500	Dip Tank
Dip Site	43	34° 12.582' N	110° 58.718' W	5500	Dip Tank
Dip Site	44	34° 12.582' N	110° 58.718' W	5500	Dip Tank
Dip Site	45	34° 12.582' N	110° 58.718' W	5500	Dip Tank
Dip Site	46	34° 12.582' N	110° 58.718' W	5500	Dip Tank
Dip Site	47	34° 12.582' N	110° 58.718' W	5500	Dip Tank
Dip Site	48	34° 12.582' N	110° 58.718' W	5500	Dip Tank
Dip Site	49	34° 12.582' N	110° 58.718' W	5500	Dip Tank
Dip Site	50	34° 12.582' N	110° 58.718' W	5500	Dip Tank
Dip Site	51	34° 12.582' N	110° 58.718' W	5500	Dip Tank
Dip Site	52	34° 12.582' N	110° 58.718' W	5500	Dip Tank
Dip Site	53	34° 12.582' N	110° 58.718' W	5500	Dip Tank
Dip Site	54	34° 12.582' N	110° 58.718' W	5500	Dip Tank
Dip Site	55	34° 12.582' N	110° 58.718' W	5500	Dip Tank
Dip Site	56	34° 12.582' N	110° 58.718' W	5500	Dip Tank
Helibase	Valentine Helibase	34° 15.410' N	110° 20.590' W		Wire shaft
Helibase	Valentine Helibase	34° 17.683' N	110° 58.492' W	6237	Cover hole
Helibase	2	34° 14.604' N	110° 51.180' W	7200	T3 Ridge top tower hole
Helibase	20	34° 13.001' N	110° 52.270' W	6200	Put helibase back side
Helibase	30	34° 10.842' N	110° 47.356' W	6500	T-3 Radar Lake Site
Helibase	33	34° 13.917' N	110° 52.182' W		
Helibase	35	34° 13.917' N	110° 52.182' W		
Helibase	38	34° 15.182' N	110° 55.570' W		
Helibase	39	34° 16.473' N	110° 54.660' W		
Helibase	40	34° 15.910' N	110° 53.531' W		
Helibase	41	34° 15.910' N	110° 53.531' W		
Helibase	42	34° 15.910' N	110° 53.531' W		
Helibase	43	34° 15.910' N	110° 53.531' W		
Helibase	44	34° 15.910' N	110° 53.531' W		
Helibase	45	34° 15.910' N	110° 53.531' W		
Helibase	46	34° 15.910' N	110° 53.531' W		
Helibase	47	34° 15.910' N	110° 53.531' W		
Helibase	48	34° 15.910' N	110° 53.531' W		
Helibase	49	34° 15.910' N	110° 53.531' W		
Helibase	50	34° 15.910' N	110° 53.531' W		
Helibase	51	34° 15.910' N	110° 53.531' W		
Helibase	52	34° 15.910' N	110° 53.531' W		
Helibase	53	34° 15.910' N	110° 53.531' W		
Helibase	54	34° 15.910' N	110° 53.531' W		
Helibase	55	34° 15.910' N	110° 53.531' W		
Helibase	56	34° 15.910' N	110° 53.531' W		
Helibase	57	34° 15.910' N	110° 53.531' W		
Helibase	58	34° 15.910' N	110° 53.531' W		
Helibase	59	34° 15.910' N	110° 53.531' W		
Helibase	60	34° 15.910' N	110° 53.531' W		
Helibase	61	34° 15.910' N	110° 53.531' W		
Helibase	62	34° 15.910' N	110° 53.531' W		
Helibase	63	34° 15.910' N	110° 53.531' W		
Helibase	64	34° 15.910' N	110° 53.531' W		
Helibase	65	34° 15.910' N	110° 53.531' W		
Helibase	66	34° 15.910' N	110° 53.531' W		
Helibase	67	34° 15.910' N	110° 53.531' W		
Helibase	68	34° 15.910' N	110° 53.531' W		
Helibase	69	34° 15.910' N	110° 53.531' W		
Helibase	70	34° 15.910' N	110° 53.531' W		
Helibase	71	34° 15.910' N	110° 53.531' W		
Helibase	72	34° 15.910' N	110° 53.531' W		
Helibase	73	34° 15.910' N	110° 53.531' W		
Helibase	74	34° 15.910' N	110° 53.531' W		
Helibase	75	34° 15.910' N	110° 53.531' W		
Helibase	76	34° 15.910' N	110° 53.531' W		
Helibase	77	34° 15.910' N	110° 53.531' W		
Helibase	78	34° 15.910' N	110° 53.531' W		
Helibase	79	34° 15.910' N	110° 53.531' W		
Helibase	80	34° 15.910' N	110° 53.531' W		
Helibase	81	34° 15.910' N	110° 53.531' W		
Helibase	82	34° 15.910' N	110° 53.531' W		
Helibase	83	34° 15.910' N	110° 53.531' W		
Helibase	84	34° 15.910' N	110° 53.531' W		
Helibase	85	34° 15.910' N	110° 53.531' W		
Helibase	86	34° 15.910' N	110° 53.531' W		
Helibase	87	34° 15.910' N	110° 53.531' W		
Helibase	88	34° 15.910' N	110° 53.531' W		
Helibase	89	34° 15.910' N	110° 53.531' W		
Helibase	90	34° 15.910' N	110° 53.531' W		
Helibase	91	34° 15.910' N	110° 53.531' W		
Helibase	92	34° 15.910' N	110° 53.531' W		
Helibase	93	34° 15.910' N	110° 53.531' W		
Helibase	94	34° 15.910' N	110° 53.531' W		
Helibase	95	34° 15.910' N	110° 53.531' W		
Helibase	96	34° 15.910' N	110° 53.531' W		
Helibase	97	34° 15.910' N	110° 53.531' W		
Helibase	98	34° 15.910' N	110° 53.531' W		
Helibase	99	34° 15.910' N	110° 53.531' W		
Helibase	100	34° 15.910' N	110° 53.531' W		



Miles
0 1 2 4

Kilometers
0 1 2 4



1:60,000 - Tonto GIS - 10/2/2023 2058
Acres from R and GPS
North American 1983 Datum, LatLong Grid