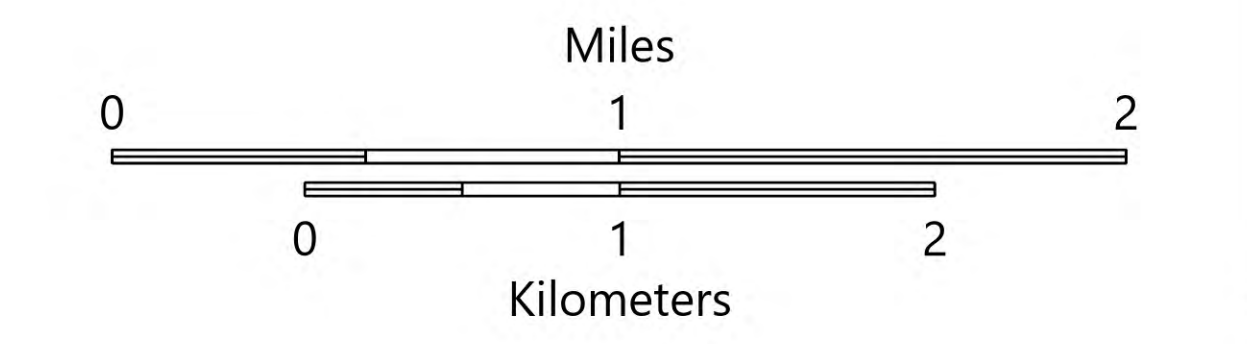


MEDICAL TRANSPORT
GROUND
Valentine Fire
AZ-TNF-1315
10/3/2023

9,644 acres at 10/2/2023 @ 2000

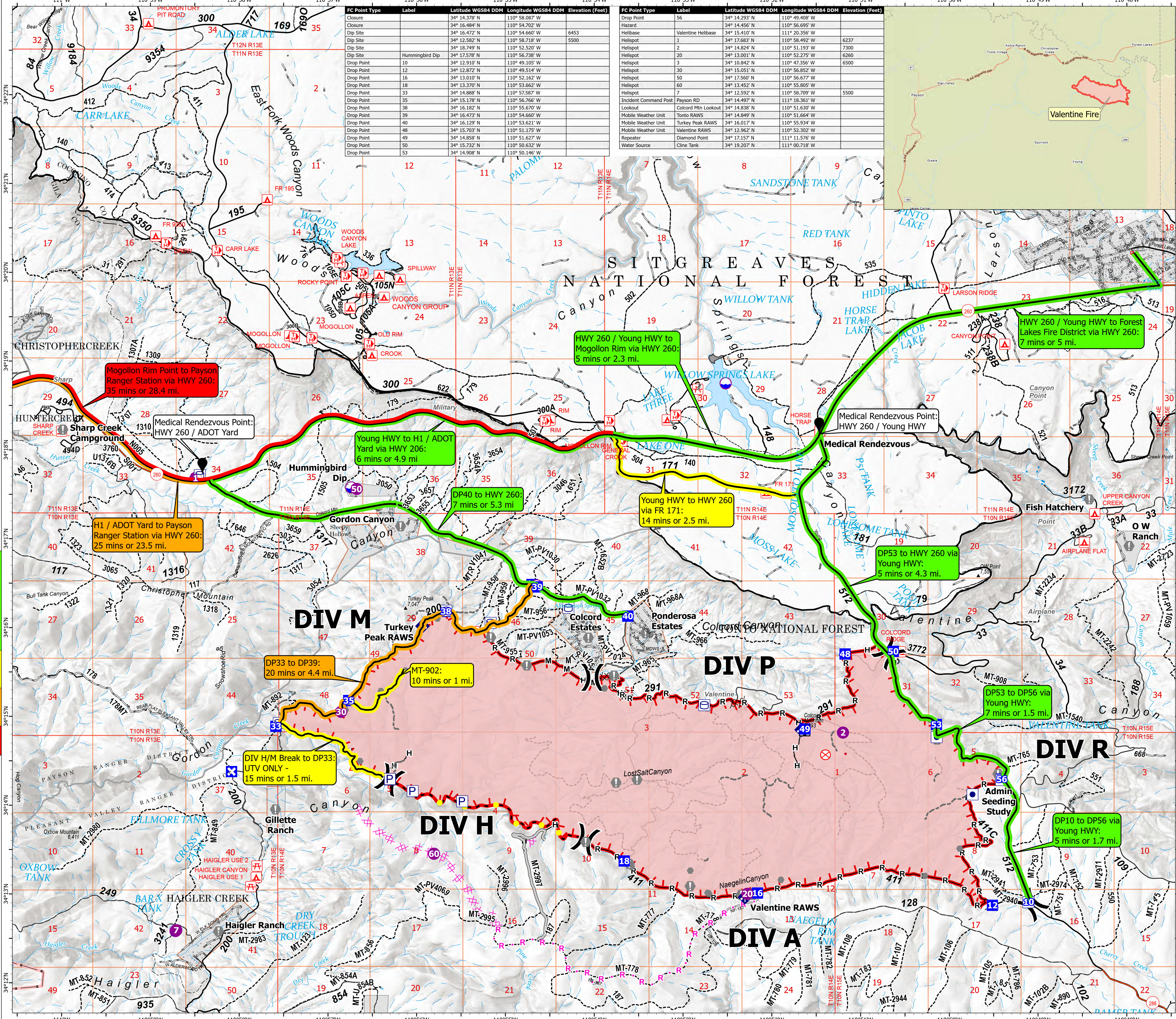
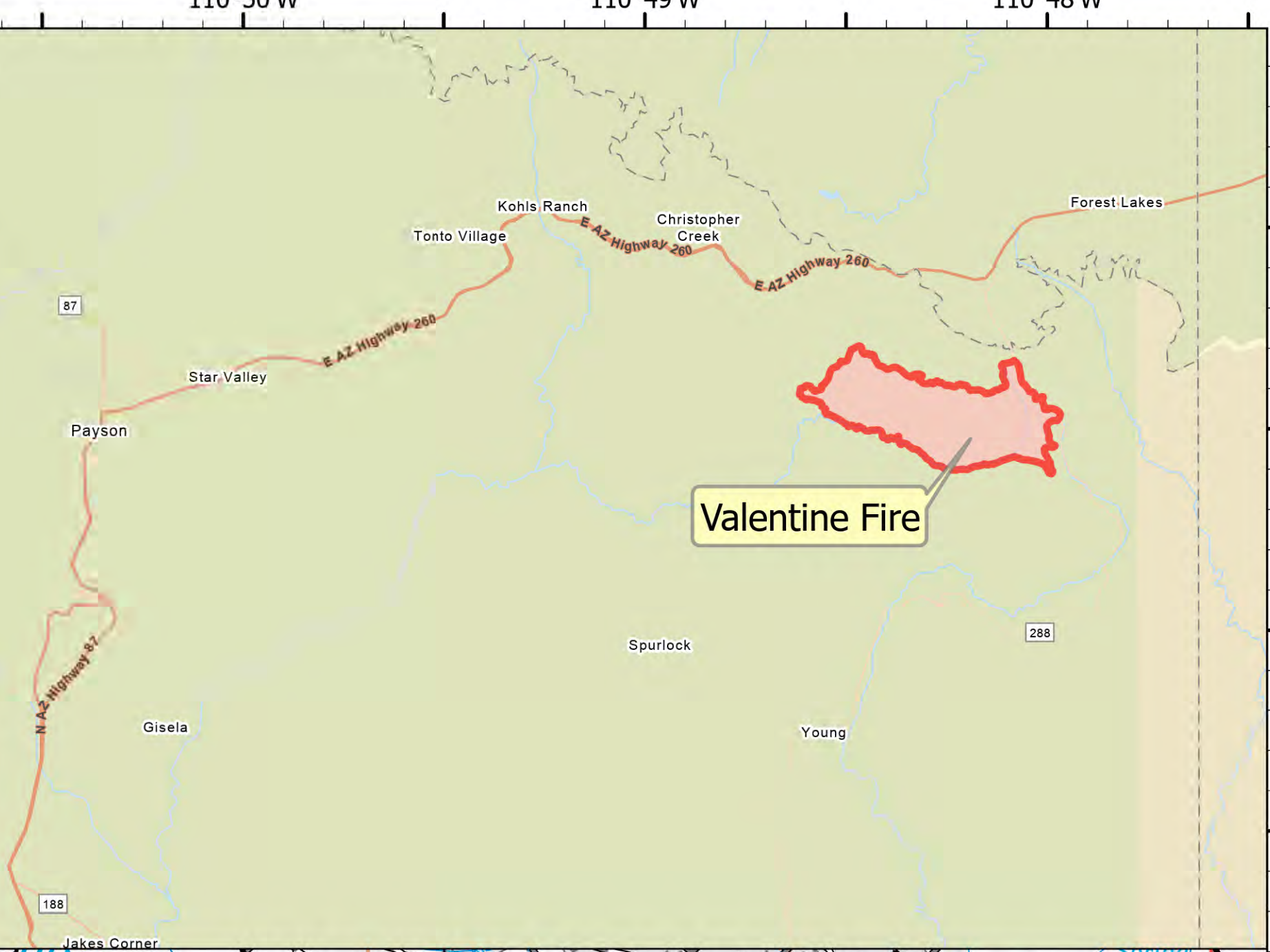
- Drive Time Category**
- 5-10 minutes
 - 10-15 minutes
 - 20-25 minutes
 - 35+ minutes
- Other Property**
- Pump
 - Water Tank
 - Dip Site
 - Helispot
 - Division Break
 - Drop Point
 - Closure
 - Lookout
 - Hot Spot - Spot Fire
 - Fire Origin
 - Value at Risk
 - Other
 - Mobile Weather Unit
 - Hazard
 - Completed Dozer Line
 - Completed Hand Line
 - Completed Mixed Construction Line
 - Completed Road as Line
 - Planned Dozer Line
 - Planned Road as Line
 - Access or Improved Road
 - Fence
 - Highlighted Feature
 - Other
 - Repair Line
 - Uncontaminated
 - Wildfire Daily Fire Perimeter

- 5-10 minutes
 - DP10 to DP56 via Young HWY: 5 mins or 1.7 mi.
 - DP56 to DP53 via Young HWY: 7 mins or 1.5 mi.
 - DP53 to HWY 260 via Young HWY: 5 mins or 4.3 mi.
 - DP40 to HWY 260: 7 mins or 5.3 mi.
 - HWY 260 / Young HWY to Forest Lakes Fire District via HWY 260: 7 mins or 5 mi.
 - HWY 260 / Young HWY to Mogollon Rim via HWY 260: 5 mins or 2.3 mi.
 - Young HWY to H1 / ADOT Yard via HWY 260: 6 mins or 4.9 mi.
- 10-15 minutes
 - DIV H/M Break to DP33: UTV ONLY - 15 mins or 1.5 mi.
 - Young HWY to HWY 260 via FR 171: 14 mins or 2.5 mi.
 - MT-902: 10 mins or 1 mi.
- 20-25 minutes
 - DP33 to DP39: 20 mins or 4.4 mi.
 - H1 / ADOT Yard to Payson Ranger Station via HWY 260: 25 mins or 23.5 mi.
- 35+ minutes
 - Mogollon Rim to Payson Ranger Station via HWY 260: 35 mins or 28.4 mi.



FC Point Type	Label	Latitude WGS84 DDM	Longitude WGS84 DDM	Elevation (Feet)
Closure		34° 14.378' N	110° 58.087' W	
Closure		34° 16.484' N	110° 54.702' W	6453
Dip Site		34° 16.472' N	110° 54.660' W	
Dip Site		34° 12.582' N	110° 58.718' W	5500
Dip Site	Hummingbird Dip	34° 17.578' N	110° 56.738' W	
Drop Point	10	34° 12.910' N	110° 49.105' W	
Drop Point	12	34° 12.872' N	110° 49.514' W	
Drop Point	16	34° 13.010' N	110° 52.162' W	
Drop Point	18	34° 13.370' N	110° 53.662' W	
Drop Point	33	34° 14.888' N	110° 57.587' W	
Drop Point	35	34° 15.178' N	110° 56.766' W	
Drop Point	38	34° 16.182' N	110° 55.670' W	
Drop Point	39	34° 16.473' N	110° 54.660' W	
Drop Point	40	34° 16.129' N	110° 53.621' W	
Drop Point	48	34° 15.703' N	110° 51.175' W	
Drop Point	49	34° 14.858' N	110° 51.627' W	
Drop Point	50	34° 15.732' N	110° 50.632' W	
Drop Point	53	34° 14.908' N	110° 50.146' W	

FC Point Type	Label	Latitude WGS84 DDM	Longitude WGS84 DDM	Elevation (Feet)
Drop Point	56	34° 14.293' N	110° 49.408' W	
Hazard		34° 14.456' N	110° 56.695' W	
Helibase	Valentine Helibase	34° 15.410' N	111° 20.356' W	
Helispot	1	34° 12.683' N	110° 58.492' W	6237
Helispot	2	34° 14.824' N	110° 51.193' W	7300
Helispot	20	34° 13.001' N	110° 52.275' W	6260
Helispot	3	34° 10.842' N	110° 47.356' W	6500
Helispot	30	34° 15.051' N	110° 56.852' W	
Helispot	50	34° 17.560' N	110° 56.677' W	
Helispot	60	34° 13.452' N	110° 55.805' W	
Helispot	7	34° 12.592' N	110° 58.709' W	5500
Incident Command Post	Payson RD	34° 14.497' N	111° 18.361' W	
Lookout	Colcord Mtn Lookout	34° 14.838' N	110° 51.630' W	
Mobile Weather Unit	Tonto RAWs	34° 14.849' N	110° 51.664' W	
Mobile Weather Unit	Turkey Peak RAWs	34° 16.017' N	110° 55.934' W	
Mobile Weather Unit	Valentine RAWs	34° 12.962' N	110° 52.302' W	
Repeater	Diamond Point	34° 17.157' N	111° 11.576' W	
Water Source	Cline Tank	34° 19.207' N	111° 00.718' W	



Mogollon Rim Point to Payson Ranger Station via HWY 260: 35 mins or 28.4 mi.

Medical Rendezvous Point: HWY 260 / ADOT Yard

Young HWY to H1 / ADOT Yard via HWY 206: 6 mins or 4.9 mi

DP40 to HWY 260: 7 mins or 5.3 mi

HWY 260 / Young HWY to Mogollon Rim via HWY 260: 5 mins or 2.3 mi.

Young HWY to HWY 260 via FR 171: 14 mins or 2.5 mi.

Medical Rendezvous Point: HWY 260 / Young HWY

HWY 260 / Young HWY to Forest Lakes Fire District via HWY 260: 7 mins or 5 mi.

DP53 to HWY 260 via Young HWY: 5 mins or 4.3 mi.

DP53 to DP56 via Young HWY: 7 mins or 1.5 mi.

DP10 to DP56 via Young HWY: 5 mins or 1.7 mi.

DIV H/M Break to DP33: UTV ONLY - 15 mins or 1.5 mi.

DP33 to DP39: 20 mins or 4.4 mi.

MT-902: 10 mins or 1 mi.