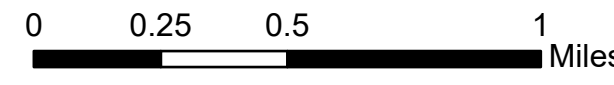


# Repair

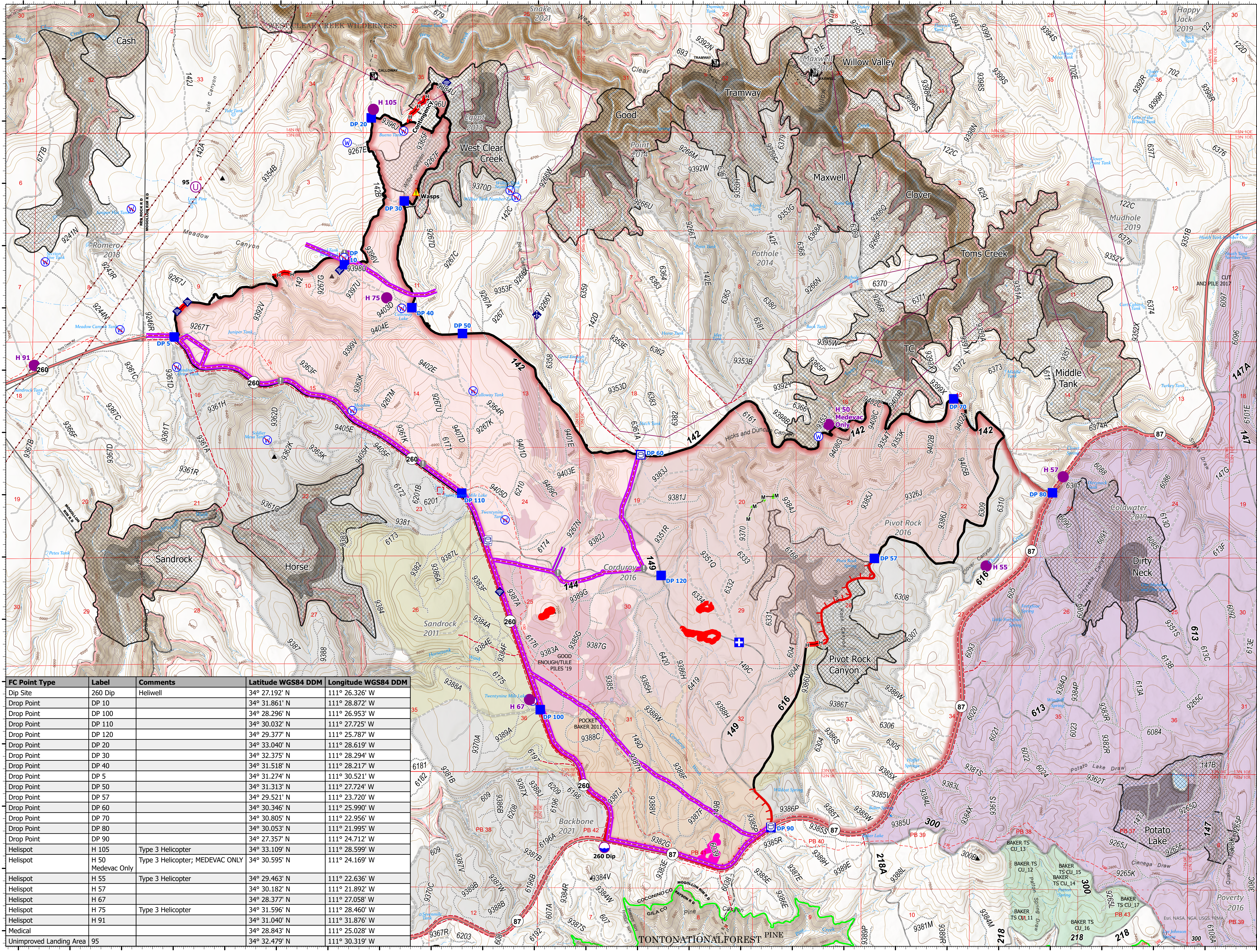
Wilbur  
AZ-COF-000272  
06/25/2023 Day  
10279 acres at 06/21/2023



- Dip Site
- Helispot
- Unimproved Landing Area
- Medical
- Drop Point
- Staging Area
- Value at Risk
- Mobile Weather Unit
- Internet Access
- Hazard
- Water Source
- Restricted Water Source
- Wildfire Daily Fire Perimeter
- Water Tank
- Completed Hand Line
- Completed Mixed Construction Line
- Access or Improved Road
- Fence
- Contained
- Uncontained
- Trail
- National Designated Trail
- Secondary Highway
- Paved Roads
- Dirt (Not Paved)
- Gravel Road
- Unimproved Roads
- Closed Roads
- Electric Power Transmission Line
- Proposed Fire Footprint
- MSO Nest Cores
- PAC Boundary
- Fuels Treatments**
- Fire - Broadcast Burn
- Fire - Fire Use
- Fire - Other
- Mechanical
- Fire History 2008 - 2022
- Administrative FS Boundary
- Ranger District Boundary
- Federal Wilderness Boundary
- County Boundary
- In Use - Fire Management
- Needs Assessment
- Repair Needed
- Completed - Inspected
- No Repair Needed

FC Point Type	Label	Comments	Latitude WGS84 DDM	Longitude WGS84 DDM
Dip Site	260 Dip	Heliwell	34° 27.192' N	111° 26.326' W
Drop Point	DP 10		34° 31.861' N	111° 28.872' W
Drop Point	DP 100		34° 28.296' N	111° 26.953' W
Drop Point	DP 110		34° 30.032' N	111° 27.725' W
Drop Point	DP 120		34° 29.377' N	111° 25.787' W
Drop Point	DP 20		34° 33.040' N	111° 28.619' W
Drop Point	DP 30		34° 32.375' N	111° 28.294' W
Drop Point	DP 40		34° 31.518' N	111° 28.217' W
Drop Point	DP 5		34° 31.274' N	111° 30.521' W
Drop Point	DP 50		34° 31.313' N	111° 27.724' W
Drop Point	DP 57		34° 29.521' N	111° 23.720' W
Drop Point	DP 60		34° 30.346' N	111° 25.990' W
Drop Point	DP 70		34° 30.805' N	111° 22.956' W
Drop Point	DP 80		34° 30.053' N	111° 21.995' W
Drop Point	DP 90		34° 27.357' N	111° 24.712' W
Helispot	H 105	Type 3 Helicopter	34° 33.109' N	111° 28.599' W
Helispot	H 50	Type 3 Helicopter; MEDEVAC ONLY	34° 30.595' N	111° 24.169' W
Helispot	H 55	Type 3 Helicopter	34° 29.463' N	111° 22.636' W
Helispot	H 57	Type 3 Helicopter	34° 30.182' N	111° 21.892' W
Helispot	H 67	Type 3 Helicopter	34° 28.377' N	111° 27.058' W
Helispot	H 75	Type 3 Helicopter	34° 31.596' N	111° 28.460' W
Helispot	H 91	Type 3 Helicopter	34° 31.040' N	111° 31.876' W
Medical			34° 28.843' N	111° 25.028' W
Unimproved Landing Area	95		34° 32.479' N	111° 30.319' W

111°32'W 111°31.5'W 111°31'W 111°30.5'W 111°30'W 111°29.5'W 111°29'W 111°28.5'W 111°28'W 111°27.5'W 111°27'W 111°26.5'W 111°26'W 111°25.5'W 111°25'W 111°24.5'W 111°24'W 111°23.5'W 111°23'W 111°22.5'W 111°22'W 111°21.5'W 111°21.0'W 111°20.5'W



NAZ Type 3 GISS  
6/24/2023 2125  
Acres from GPS  
North American 1983 Datum, Lat/Long Grid