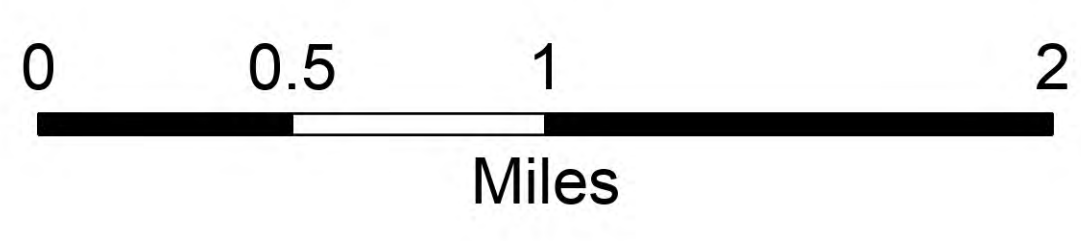
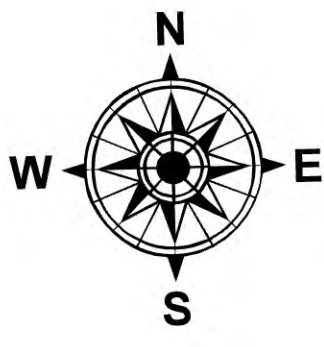
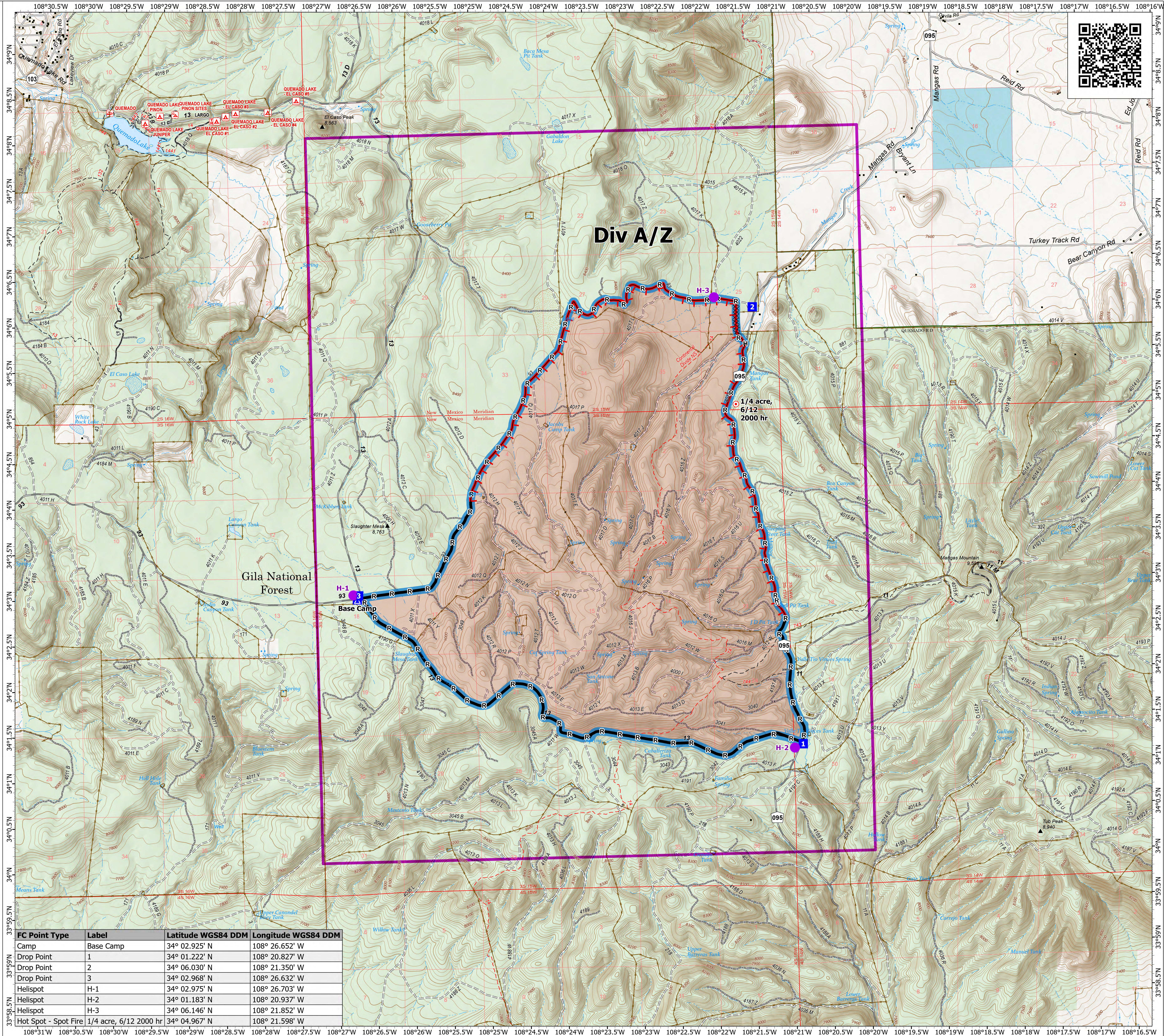


Operations

Antone
 NM-GNF-000210
 6/16/2024 Day

12,397 acres at 6/14/2024 0900hr

- Structure
- Helispot
- Drop Point
- ▲ Camp
- ⊙ Hot Spot - Spot Fire
- ⊗ Completed Dozer Line
- Completed Hand Line
- Completed Road as Line
- ▬ Contained
- ▬ Uncontained
- ▬ Primary Strategic Line
- ▬ Wildfire Daily Fire Perimeter
- ▬ Planning Area
- State Road (Dirt)
- Secondary Dirt
- ~ Gravel Road
- ~ Dirt Road
- ~ Unimproved Road
- ~ Forest Service Roads Closed
- ~ Trail
- ~ Natl Designated Trail
- Fence
- ▬ Forest Service Land
- ▬ State Lands



1:24,000 | RIST 2024 | 6/15/2024 1626
 Acres from Handsketch
 North American 1983 Datum. LatLong Grid

FC Point Type	Label	Latitude WGS84 DDM	Longitude WGS84 DDM
Camp	Base Camp	34° 02.925' N	108° 26.652' W
Drop Point	1	34° 01.222' N	108° 20.827' W
Drop Point	2	34° 06.030' N	108° 21.350' W
Drop Point	3	34° 02.968' N	108° 26.632' W
Helispot	H-1	34° 02.975' N	108° 26.703' W
Helispot	H-2	34° 01.183' N	108° 20.937' W
Helispot	H-3	34° 06.146' N	108° 21.852' W
Hot Spot - Spot Fire	1/4 acre, 6/12 2000 hr	34° 04.967' N	108° 21.598' W