

INCIDENT ACTION PLAN

Fort Apache Agency

Incident Commander:

Operational Period:

--	--

INCIDENT OBJECTIVES (ICS 202)

1. Incident Name:	2. Operational Period: DAY	
BEAR	Date/Time From: 06/14/2024 0600 FRI	Date/Time To: 06/14/2024 2200 FRI
3. Objective(s):		
<ul style="list-style-type: none"> • Maintain the safety of firefighters and public as the highest priority using sound risk management • Provide protection to communities, infrastructure, values at risk, and contain the fire to the smallest size possible by utilizing point protection and direct or indirect control methods • Maintain and develop partnerships and relationships with cooperating agencies and stakeholders. • Minimize impacts to cultural, heritage, recreation, natural resource, and wildlife values by coordinating suppression actions with READs and AAs. • Provide initial attack response within TFR areas, specifically South of BIA 12 Rd, East of Salt River Draw, North of Cibecue Creek and G8 and B8 roads, West of Hwy 60 and G17 road. 		
Values at Risk		
<ul style="list-style-type: none"> • Community of Cibecue • Emory Oak patch • Cibecue Falls • Natural Springs • Cultural Sites • Heritage Resources 		
4. Operational Period Command Emphasis:		
When working around heavy equipment, make sure operators can always see you, don't assume they can. Keep in communication and keep your distance.		
General Situational Awareness:		
Analyze the risk vs. gain of your assignment.		
Are you doing the right thing for your personnel and giving them a safe working environment? If yes, then proceed.		
If no, then reevaluate the assignment and provide solutions. LCES pre-identify multiple escape routes.		
5. Site Safety Plan Required? Yes <input type="checkbox"/> No <input checked="" type="checkbox"/>		
Approved Site Safety Plan(s) Located at:		
6. Incident Action Plan (the items checked below are included in this Incident Action Plan):		
<input checked="" type="checkbox"/> ICS 202	<input type="checkbox"/> ICS 207	Other Attachments:
<input checked="" type="checkbox"/> ICS 203	<input type="checkbox"/> ICS 208	<input type="checkbox"/> _____
<input checked="" type="checkbox"/> ICS 204	<input checked="" type="checkbox"/> ICS 220	<input type="checkbox"/> _____
<input checked="" type="checkbox"/> ICS 205	<input checked="" type="checkbox"/> Map/Chart	<input type="checkbox"/> _____
<input type="checkbox"/> ICS 205A	<input type="checkbox"/> Weather Forecast/Tides/Currents	<input type="checkbox"/> _____
<input checked="" type="checkbox"/> ICS 206		
7. Prepared by: RUTH KOHLER	Position/Title: PLANNING SECTION CHIEF	Signature:
8. Approved by Incident Commander:	Name: JOSH SALAZAR (T)	Signature:
ICS 202	IAP Page	Date/Time: 06/13/2024 2000

ORGANIZATION ASSIGNMENT LIST (ICS 203)

1. Incident Name:		2. Operational Period: DAY	
BEAR		Date/Time From: 06/14/2024 0600 FRI	Date/Time To: 06/14/2024 2200 FRI
3. Incident Commander(s) and Command Staff:		7. Operations Section:	
IC/UC	PLUMB, BEN SALAZAR, JOSH (T)	OPS SECTION CHIEF	GABLER, JUSTIN
DEPUTY		PLANNING OPS	LOPEZ, TOM
SAFETY OFFICER	CHRISTENSEN, CC	DEPUTY OPS SECTION CHIEF	
INFORMATION OFFICER	JOHNSON, STEVEN	STAGING AREA	
LIAISON OFFICER	BALDRIDGE, AARON		
4. Agency/Organization Representative(s):		DIVISION/GROUP	ALPHA MILLER, JOSHUA GREGG, BUTCH (T)
Agency/Organization	Name	DIVISION/GROUP	PAPA RANEY, DAVID
FT APACHE SUPERINTENDENT	BEN, LEON	DIVISION/GROUP	CONTINGENCY DAZEN, MARWIN (T) SIGG, MATTHEW (T)
FT APACHE AGENCY ADMIN	DIVALENTINO, RICK	7b. Air Operations Branch:	
RESOURCE ADVISOR	PARKER, SEAN	AIR OPS BRANCH DIRECTOR	WILSON, ROB
FOREST MANAGER	BEATTY, CHRIS	AIR ATTACK SUPERVISOR	
PHEP COORDINATOR	THOMPSON, LEO	AIR SUPPORT SUPERVISOR	
IBA	BOATRIGHT, AMANDA	HELICOPTER COORDINATOR	
5. Planning Section:		AIR TANKER COORDINATOR	
CHIEF	KOHLER, RUTH BUCE, LES (T)	8. Finance/Administration Section:	
DEPUTY		CHIEF	PUTT, KARILYN SANCHEZ, ANDREA (T)
RESOURCES UNIT		DEPUTY	
SITUATION UNIT	JEANNE, JULIETTE	TIME UNIT	DINKEL, MICAYLA (T)
DOCUMENTATION UNIT		PROCUREMENT UNIT	
DEMOBILIZATION UNIT		COMPENSATION UNIT	
GIS SPECIALIST	KIRK, BOB PAXSON, DESIREE (T)	COST UNIT	DEVLIN, LANCE (T)
TECHNOLOGY SUPPORT SPECIALIST	HERNANDEZ, GONZALO		
STATUS CHECK IN	BARUA, AJ		
FIRE BEHAVIOR ANALYST			
6. Logistics Section:			
CHIEF	WALLACE, RICHARD BEAUDOIN, GENE		
DEPUTY	MCALISTER, DEAN J		
SUPPLY UNIT	WHARTON, TJ		
FACILITIES UNIT	OLMSTEAD, GREG (T)		
BASE CAMP MANAGER	TOWNSEND, RICK MILLER, KASEY (T)		
GROUND SUPPORT UNIT			
COMMUNICATIONS UNIT	NORMAN, MICHAEL		
MEDICAL UNIT	MORGAN, JAMES		
DAY SEC 1	MUNDY, TYLER (530) 318-0397		
NIGHT SEC 1	RYAN, TIMOTHY (409) 273-2504		
9. Prepared By:	Name: LES BUCE	Position/Title: PSC3(T)	Signature:
ICS 203	IAP Page	Date/Time: 06/13/2024 2000	

FINAL

Spot Forecast for Bear...Fort Apache
National Weather Service Flagstaff AZ

.DISCUSSION...Above normal temperatures will continue Friday and Saturday, with the majority of precipitation fading quickly after 5 AM MST on Friday. Drier conditions will quickly return over the weekend, with afternoon minimum RH values between 5-10%. Expect daily afternoon winds out of the southwest between 5-10 mph, with gusts near 15 mph. Winds look to increase through the beginning of next week along with continued dry weather.

.FRIDAY...

Sky/weather.....Mostly cloudy during early morning, quickly
Becoming sunny in the early afternoon.
Chance of pcpn.....10 percent.
Max temperature.....92-96 degrees.
Min humidity.....5-10 percent.
Wind (20 ft).....Southeast winds around 5 mph shifting to the
southwest around 10 mph in the afternoon. Wind
gusts possible near 15 mph throughout the day.
LAL.....1.
Haines Index.....5 or moderate potential for large plume
dominated fire growth.
Max Vent Rate.....Excellent.
Clearing Index.....2088.
Mixing height.....10200 ft AGL in the morning increasing to 13500
ft AGL late in the morning.
Transport winds.....South 5 to 10 knots shifting to the west late
in the afternoon.

.FRIDAY NIGHT...

Sky/weather.....Clear.
Chance of pcpn.....0 percent.
Min temperature.....58-62 degrees.
Max humidity.....28-32 percent.
Wind (20 ft).....West winds around 5 mph in the evening becoming
north winds generally less than 5 mph
overnight.
LAL.....1.
Haines Index.....4 or low potential for large plume dominated
fire growth.
Min Vent Rate.....Poor.
Clearing Index.....1.
Mixing height.....0 ft AGL.
Transport winds.....Northwest around 5 knots shifting to the north
0 to 5 knots overnight.

Division/Group Assignment List (ICS 204 WF)

Controlled Unclassified Information//Basic

1. Incident Name:			3.				
BEAR			Branch:		Division/Group:		
2. Operational Period: DAY							
Date/Time From: 06/14/2024 0600 FRI		Date/Time To: 06/14/2024 2200 FRI		ALPHA			
4. Operations Personnel							
OPERATIONS CHIEF		GABLER, JUSTIN		BRANCH DIRECTOR			
DIVISION/GROUP SUPERVISOR		MILLER, JOSHUA GREGG, BUTCH (T)		AIR ATTACK SUPERVISOR		WILSON, ROB	
5. Resources Assigned this Period							
Strike Team / Task Force / Resource Designator		LWD	Leader		Number Persons	Drop Off PT./Time	Pick Up PT./Time
IHC FORT APACHE C-2		06/22	QUINTERO, BRIAN		19	ICP/0600	ICP/2000
IHC BLACK MESA C-9		06/24	CHARTIER, CODY A		21	ICP/0600	ICP/2000
T2IA FORT APACHE #01 C-8		06/22	LEE, LENWOOD		19	ICP/0600	ICP/2000
T2IA SAFFORD C-5		06/22	ROMERO, BERNIE M		18	ICP/0600	ICP/2000
REMS PINETOP 1 O-7		06/23	BROWN, ERIC		4	ICP/0600	ICP/2000
SOFC O-1.32		06/22	STRICKLAND, GARY		1	ICP/0600	ICP/2000
6. Control Operations/Work Assignments:							
<ul style="list-style-type: none"> Construct direct/indirect line where needed, and where the highest probability of success exists. Keep fire to the south of G4 road and reduce footprint to the west as safely as possible. Start mop up operations within the contained area. Begin suppression repair work as appropriate for the division. End State: Line has been prepped, constructed and secured with minimal impacts to Values at Risk. 							
7. Special Instructions:							
<ul style="list-style-type: none"> Consider natural resources, cultural resources, and any improvements when constructing line. Document line locations and communicate information to Resource Advisors. Document any possible retardant lines to waterways. 							
8. Division/Group Communication Summary							
Function	Channel	RX Frequency N/W	RX Tone/NAC	TX Frequency N/W	TX Tone/NAC	Mode	
COMMAND	8	170.4500 N	123.0	168.1000 N	123.0	A	
TACTICAL	1	168.0500 N	123.0	168.0500 N	123.0	A	
AIR TO GROUND	13	166.9000 N		166.9000 N		A	
9. Prepared By (Resource Unit Leader)			Approved By (Planning Section Chief)		Date	Time	
LES BUCE			RUTH KOHLER		06/13/2024	2000	

Division/Group Assignment List (ICS 204 WF)

Controlled Unclassified Information//Basic

1. Incident Name:			3.				
BEAR			Branch:		Division/Group:		
2. Operational Period: DAY							
Date/Time From: 06/14/2024 0600 FRI		Date/Time To: 06/14/2024 2200 FRI		PAPA			
4. Operations Personnel							
OPERATIONS CHIEF		GABLER, JUSTIN		BRANCH DIRECTOR			
DIVISION/GROUP SUPERVISOR		RANEY, DAVID		AIR ATTACK SUPERVISOR		WILSON, ROB	
5. Resources Assigned this Period							
Strike Team / Task Force / Resource Designator		LWD	Leader		Number Persons	Drop Off PT./Time	Pick Up PT./Time
IHC ENTIAT C-3		06/22	PICKARD, DANIEL E		21	ICP/0600	ICP/2000
T2IA NAVAJO SCOUTS 1 C-4		06/23	BILLIE, BRIAN		20	ICP/0600	ICP/2000
T2IA TWIN PEAKS C-10		06/24	STILSON, CHAD		21	ICP/0600	ICP/2000
MED TEAM 3		06/22	WARD, CHEYENNE		2	ICP/0600	ICP/2000
TFLD(T) O-1.11		06/22	BRANNON, CHRISTINA		1	ICP/0600	ICP/2000
SOFC O-1.32		06/22	STRICKLAND, GARY		1	ICP/0600	ICP/2000
6. Control Operations/Work Assignments:							
<ul style="list-style-type: none"> Construct direct/indirect line where needed, and where the highest probability of success exists. Keep fire to the west of G3 road and look for contingent lines to the east. Start mop up operations within the contained area. Begin suppression repair work as appropriate for the division. End State: Line has been prepped, constructed and secured with minimal impacts to Values at Risk. 							
7. Special Instructions:							
<ul style="list-style-type: none"> Consider natural resources, cultural resources, and any improvements when constructing line. Document line locations and communicate information to Resource Advisors. Document any possible retardant lines to waterways. 							
8. Division/Group Communication Summary							
Function	Channel	RX Frequency N/W	RX Tone/NAC	TX Frequency N/W	TX Tone/NAC	Mode	
COMMAND	8	170.4500 N	123.0	168.1000 N	123.0	A	
TACTICAL	2	168.2000 N	123.0	168.2000 N	123.0	A	
AIR TO GROUND	13	166.9000 N		166.9000 N		A	
9. Prepared By (Resource Unit Leader)			Approved By (Planning Section Chief)		Date	Time	
LES BUCE			RUTH KOHLER		06/13/2024	2000	

Division/Group Assignment List (ICS 204 WF)

Controlled Unclassified Information//Basic

1. Incident Name:			3.				
BEAR			Branch:		Division/Group:		
2. Operational Period: DAY							
Date/Time From: 06/14/2024 0600 FRI		Date/Time To: 06/14/2024 2200 FRI		CONTINGENCY			
4. Operations Personnel							
OPERATIONS CHIEF		GABLER, JUSTIN		BRANCH DIRECTOR			
DIVISION/GROUP SUPERVISOR		DAZEN, MARWIN * (T) SIGG, MATTHEW (T)		AIR ATTACK SUPERVISOR		WILSON, ROB	
5. Resources Assigned this Period							
Strike Team / Task Force / Resource Designator		LWD	Leader		Number Persons	Drop Off PT./Time	Pick Up PT./Time
*IHC GLOBE C-11		06/26	MAXWELL, DREW		23	ICP/0600	ICP/2000
*ENG6 AZCOF E672 E-27		06/16	DONATELLO		5	ICP/0600	ICP/2000
*ENG6 PINETOP B5 E-5		06/22	CRAIG, DARRELL A		3	ICP/0600	ICP/2000
*ENG - 5261		06/22	PAXSON, PETER		3	ICP/0600	ICP/2000
ENG6 VALKYRIE FIRE E-2		06/23	REESE, CHARLES		3	ICP/0600	ICP/2000
WTT1 - 41 PINE STRAWBERRY E-8		06/23	TURLEY, GARRET		2	ICP/0600	ICP/2000
WTS1 - STEEPLE E-1		06/21	ZOSPAH, LOUIS		2	ICP/0600	ICP/2000
DZR2 - MAYER E-3		06/22	MAYER, B		2	ICP/0600	ICP/2000
AMBO 6 E-45		06/26	STENHOUSE, COLIN		2	ICP/0600	ICP/2000
MED TEAM 5 O-43		06/25	JONES, JAKE		2	ICP/0600	ICP/2000
HEQB (T) O-30		06/24	LARKIN, ANDREW		1	ICP/0600	ICP/2000
HEQB O-6		06/25	JONES, MATT		1	ICP/0600	ICP/2000
SOFC O-1.32		06/22	STRICKLAND, GARY		1	ICP/0600	ICP/2000
6. Control Operations/Work Assignments:							
<p>Develop a plan for structure protection if fire were to threaten the community of Cibecue. Provide initial attack response within the TFR area. Begin suppression repair as appropriate for the division. * Denotes available for IA as needed.</p>							
7. Special Instructions:							
8. Division/Group Communication Summary							
Function	Channel	RX Frequency N/W	RX Tone/NAC	TX Frequency N/W	TX Tone/NAC	Mode	
COMMAND	8	170.4500 N	123.0	168.1000 N	123.0	A	
TACTICAL	3	168.6000 N	123.0	168.6000 N	123.0	A	
AIR TO GROUND	13	166.9000 N		166.9000 N		A	
9. Prepared By (Resource Unit Leader)			Approved By (Planning Section Chief)		Date	Time	
LES BUCE			RUTH KOHLER		06/13/2024	2000	

Controlled Unclassified Information/Basic

AIR OPERATIONS SUMMARY		Prepared By: Rob Wilson AOB	Prepared: 06/13/2024	Prepared Time: 1900 hrs.
BEAR	2. OPERATIONAL PERIOD	06/14/2024	START TIME:	0700
			END TIME:	2000
			SUNRISE:	0508
			SUNSET:	1934

IN THE ABSENCE OF AERIAL SUPERVISION, ORDER AIRCRAFT THROUGH OPERATIONS

DO YOUR PART FOR AVIATION MISSION SUCCESS. A NUMBER OF FACTORS CAN CONTRIBUTE TO DELAYS IN AIRCRAFT ON SCENE TIMES. SOME CONTRIBUTORS TO DELAYS INCLUDE RISK ASSESSMENTS, WEATHER, UNCLEAR INTENT, OR HIGHER LOCALIZED, REGIONAL, OR NATIONAL PRIORITIES TO NAME A FEW.

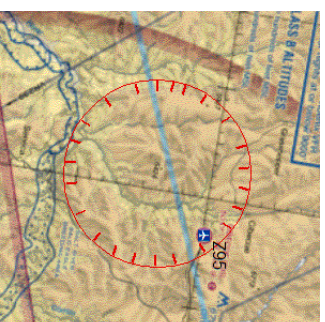
PLAN OUT AIR LOGISTICS MISSIONS. CONSOLIDATE MISSIONS TO REDUCE LOGISTICAL TIME LAG

EFFECTIVELY ARTICULATE VALUES AT RISK AND END STATE WHEN UTILIZING FIXED WING RETARDANT

H-8PA SHORT-HAUL CAPABLE

UNMANNED ROMEO 3-1 TYPE 3 UAS

TFR 4/7335



FREQ 123.125

6. PERSONNEL	NAME	PHONE #	7. FREQUENCIES	AM	FM	8. FIXED-WING Avail/ Type/ Make-Model/ N#/ Base
Air Ops	Rob Wilson	928-978-4594	BEAR TFR AA BEAR AA	123.1250 120.1250		AIRANKERS: ORDER THRU AERIAL SUPERVISION SCOOPERS: ORDER THROUGH AERIAL SUPERVISION AA-5FS NAN FLOYD 509-429-7151
H-8PA	Chris Brown	208-630-4927	BEAR A/G Primary BEAR A/G Secondary		166.9000 168.7375	BEAR HELISPOT 33 59.9757 X 110 27.0433 LONELY HELISPOT 34 01.67 X 110 31.12
SPRINGERVILLE	Aircraft Desk	928-333-6360				Send costs to: 2024.bear.finance@firenet.gov Scoopers: Kris Maldonado 530-545-9460 UAS: Kelly Boyd 406-459-0597
DISPATCH			VMED 28		155.3470	

FAA N#	TY	MAKE/ MODEL	BASE	START	AVAIL	REMARKS	FAA N#	TY	MAKE/ MODEL	BASE	START	AVAIL	REMARKS
8PA	3	AS-350 B3	SOW	0700	0730	PAX,H20,SH,AI							
								3	Alta X				Unmanned Romeo 3-1

HELICOPTER EXTRACTION OPERATIONS

The intent of helicopter insertion/extraction operations is to facilitate the movement of personnel to and from inaccessible areas. These operations are not meant to be a medical transport resource; life flight and ground transportation should always be ordered in addition to the extraction aircraft and crew.

ORDERING:

- On-scene EMT and/or Incident within Incident IC determines that an extraction helicopter is needed and places the order through the pre-established procedures:
 - Division Supervisor
 - Incident Communications
 - Dispatch Center
- When ordering extraction aircraft provide the following information:
 - Location (Lat/Long) of patient
 - Known Hazards
 - Wind Speed and Direction
 - Terrain
 - Incident Updates

SITE SELECTION:

- The helicopter crew will confirm the extraction location when they arrive on scene. However, a general rule is any clearing that is 10'x10' with visible sight lines to the sky is a suitable extraction site.
- If the terrain is steep, excavating a platform or shelf can make it easier for patient packaging.

QR Code-Short-haul Site Selection Video



CONSIDERATIONS:

- Short-haul and hoist are safe and efficient operations for extracting injured personnel of any severity including “Green” patients.
- Ensure area is clear of non-essential items, hazards, and personnel.
- Rotor wash may affect overhead hazards and blowing dust/debris can create brown out conditions or influence fire behavior.
- Aerial Supervision is valuable for coordinating aviation medevac/extraction missions and should be ordered if available and not currently present.
- The aircrew will make the final assessment of the mission. Always have a contingency plan in case a helicopter cannot complete the request.

DEFINITIONS:

Rescue Hoist: A cable winching device mounted to the helicopter that can lower/raise persons attached to a cable.

- Common cable lengths are 250-300 feet.

Short-haul: To insert or extract one or more persons suspended on a fixed line beneath a helicopter.

- Common short-haul line lengths are 100, 150, and 250 feet. The lines can also be connected for a longer line if the situation requires it.

Short-Haul Operations

CAPABILITIES

- During an operational Short-Haul the helicopter is capable of inserting Short-Haulers into an area with tight canopy cover and/or technical terrain.
- Haul line lengths range from 100 feet to 350 feet.
- Short hauler and/or medical gear can be delivered to the medical scene even if extraction by short-haul is not necessary.

ORDERING

- EMT or Medical Incident IC determines medical extraction is required.
- Follow local established procedures and/or Medical Incident Report (MIR) in the IRPG.
- Confirm aircraft type, call sign, estimated time of arrival and frequency.
- Give site selection information when ordering: hazards (i.e. ash, smoke, snags, aerial), tree height, terrain, and patient transport configuration (supine or seated position). Repeat hazards and give updated weather conditions as well as brief patient update to responding helicopter.

PROCESS: The helicopter will fly to the coordinates provided. They will make contact with ground personnel on scene with the patient using an identified air-to-ground frequency. The helicopter will complete a short-haul recon and size up, gather patient update information and then fly to a landing zone (LZ) to configure for short-haul operations. The helicopter will be monitoring the appropriate air-to-ground, air guard and victor frequencies. From this point, ground resources should only contact the helicopter in case of an emergency. During the insertion and extraction process ground personnel must be clear of the area.

ON SCENE: EXPECT THE FOLLOWING

- 1 or 2 rescuers (at least one qualified as an EMT or higher)
- Backboard (if needed and not already on scene)
- All equipment necessary for patient extraction

The Patient Extraction Bag accommodates most backboards.
-A patient on a backboard, TRS, SKED or litter will be inserted into the bag.



The Seat Harness is used for patients not requiring the use of a backboard.



INCIDENT RADIO COMMUNICATIONS PLAN I-205		1. INCIDENT NAME	2. DATE/TIME PREPARED	3. OPERATIONAL PERIOD DATE/TIME
		Bear Fire	6-13-2024 1800	6-14-2024 0600 - 2000

4. BASIC RADIO CHANNEL UTILIZATION											
Ch #	Function	Channel Name	Assignment	RX Freq	N/W	RX Tone/NAC	TX Freq	N/W	TX Tone/NAC	Mode Analog (A) Digital (D) Mixed (M)	Remarks
1	Tactical	TAC 1	DIV A	168.0500	N	123.0	168.0500	N	123.0	A	DIV A
2	Tactical	TAC 2	DIV P	168.2000	N	123.0	168.2000	N	123.0	A	DIV P
3	Tactical	TAC 3	CONTIN...	168.6000	N	123.0	168.6000	N	123.0	A	CONTINGENCY
4	Tactical	TAC 4	I/A	166.7250	N	123.0	166.7250	N	123.0	A	I/A
5	Tactical	TAC 5	NOT ASSIGNED	166.7750	N	123.0	166.7750	N	123.0	A	
6	Tactical	TAC 6	NOT ASSIGNED	168.2500	N	123.0	168.2500	N	123.0	A	
7	I/A A/G	LOCAL I/A	I/A	167.1750	N	0.0	167.1750	N	0.0	A	LOCAL I/A
8	Command	CMD 8	COMMAND	170.4500	N	123.0	168.1000	N	123.0	A	
9	Command	UNASSIGNED	NOT ASSIGNED		N			N		A	
10	FIRE CHEDISKI	SPVL DISP		172.6750	N	151.4	166.3625	N	186.2	A	SPRINGERVILLE DISPATCH
11	FIRE MAVERICK	SPVL DISP		172.6750	N	151.4	166.3625	N	151.4	A	SPRINGERVILLE DISPATCH
12	FIRE MCKAYS	SPVL DISP		172.6750	N	151.4	166.3625	N	162.2	A	SPRINGERVILLE DISPATCH
13	A - A/G	A	Primary	166.9000	N	0.0	166.9000	N	0.0	A	Air Ops with Air Attack
14	B - A/G	B	Secondary	168.7375	N	0.0	168.7375	N	0.0	A	Air Ops with Bucket
15	St Mutual Aid	VFIRE 21	Medical Evac	154.2800	N	0.0	154.2800	N	0.0	A	// MEDICAL EVAC //
16	AIR GUARD			168.6250	N	0.0	168.6250	N	110.9	A	

5. Special Instructions: COMM UNIT Phone # 202-664-9605

6. I-205 Prepared By: Communications Unit Leader **COML M. NORMAN** Name: **COML M. NORMAN** Signature: *Mike Norman* *.*

Safety Message/Plan (ICS 208)

1. INCIDENT NAME

Bear Fire



2. OPERATIONAL PERIOD

From: **June 14, 2024**, Time 0600

To: **June 14, 2024**, Time 2200

3. SAFETY MESSAGE / EXPANDED SAFETY MESSAGE, SAFETY PLAN, SITE SAFETY PLAN:

Major Hazards

- Weather:** Weather is getting hotter and drier with increased winds. Monitor the weather and preplan accordingly. Weather affects fire behavior and firefighter capabilities. Stay ahead of a hydration deficit, monitor each others wellbeing. Don't take dehydration lightly, treat it as a life threatening situation.
- Heavy Equipment:** When working around heavy equipment, make sure operators can always see you, don't assume they can. Keep in communication and keep your distance.
- Roads:** Dust, rough spots, and soft shoulders. Drive slowly, use headlights, stay away from the shoulder.

-Dave Rainey, the most interesting man in the world, lives vicariously through himself.-

Risk Narrative

“A leader is one who knows the way, goes the way, and shows the way.” —John C. Maxwell

Every firefighter has the right and obligation to report safety problems and contribute ideas regarding their safety. When you feel an assignment is unsafe, you also have the obligation to identify, safe alternatives for completing that assignment. Turning down an assignment is one possible outcome of managing risk.

- A turn down is a situation where an individual has determined an assignment cannot be undertaken as given and they are unable to negotiate an alternative solution.
- A turn down must be based on an assessment of risks and the ability of an individual or organization to control those risks.
- The individual will directly inform their supervisor that they are turning down the assignment as given.
- The supervisor will notify the Safety Officer, Section Chief, or Incident Commander immediately upon being informed.
- If a supervisor requests another resource to perform the assignment, they are responsible for informing that resource that the assignment has previously been refused and the reason(s) why.
- These actions do not stop an operation from being carried out. This protocol is integral to the effective management of risk as it provides timely identification of hazards to the chain of command, raises risk awareness for both leaders and subordinates, and promotes accountability.

Everyday Tasks

- Practice the Medical Incident Report (MIR) daily, everyone should be comfortable with the process.
- Ensure LCES is in place.
- Ensure you have the right frequencies and repeaters in your radio.
- Access and analyze all hazards in your work area. Communicate hazards to all adjoining forces.
- Utilize the Risk Management process when making decisions.
- Monitor the weather.

4. RISK ASSESSMENT REQUIRED.

Approved Risk Assessment Located At: Approved by IC on June 11, 2024. Filed with Safety Officer.

5. PREPARED BY: Gary Strickland, Safety Officer

Date Prepared: June 13, 2024

SIGNATURE: /s/*Gary Strickland*

Time Prepared:0900

MEDICAL PLAN (ICS 206 WF)

1. Incident/Project Name		2. Operational Period						
Bear Fire		Date/Time Friday, June 14, 2024 0700-2200						
3. Ambulance Services								
Name	Complete Address	Phone	Advanced Life Support (ALS)					
			Yes	No				
* WMAT EMS	103 W. Rainbow St, Whiteriver, AZ 85941	928-338-3095	xxxxxxx					
Timber Mesa Fire Medical	911 Ambo	928-537-5091 Show Low PD Dispatch	xxxxxxx					
Pinetop Fire District	911 Ambo	928-537-5091 Show Low PD Dispatch	xxxxxxx					
Heber Overgaard Fire Medical	911 Ambo	928-537-5091 Show Low PD Dispatch	xxxxxxx					
4. Air Ambulance Services								
Name	Phone	Type of Aircraft & Capability						
Air Evac	1-877-411-5280	AV 32 is an A-star @ Show Low Airport 12-20 min ETA to scene Each can transport one patient, each helicopter has night vision (Vfire 21 for contact with helicopter)						
Native Air	1-877-411-5280	Native 9 is an A-star B407 @ Summit Hospital 12-20 min ETA to scene Can transport one patient, each helicopter has night vision (Vfire 21 for contact with helicopter)						
AZ Highway Patrol- Ranger	800-247-6337- Phx Dispatch/ Incident Comms	DPS Ranger is a Bell 407 (Short-Haul) in Tucson, Bell 429 (Hoist) Phoenix and Flagstaff. ETA to ICP 30min to 2 hours depending on mission and availability (VFire 21 for contact with helicopter)						
5. Hospitals								
Name Complete Address	GPS Datum – WGS 84 Coordinate Standard Degrees Decimal Minutes DD° MM.MMM' N - Lat DD° MM.MMM' W - Long		Travel Time from ICP		Phone	Helipad		Level of Care Facility
	Lat:	Long:	Air	Gnd		Yes	No	
Whiteriver Indian Hospital 200 W. Hospital Drive Whiteriver, AZ 85941	Lat:	N 33° 52.34.4094	15-20	1.0	Main 928-338-4911	<input checked="" type="checkbox"/>		Level 4 Trauma Center
	Long:	W 109° 57.40.233	Min	hrs				
	VHF:							
Honor Health Scottsdale Osborne Medical Center 7400 E Scottsdale Rd Scottsdale, AZ 85251	Lat:	N 33° 29.347	45-60	3.0	Main: 480-882-4000 ER: 480-882-4815	<input checked="" type="checkbox"/>	<input type="checkbox"/>	Level 1 Trauma Center
	Long:	W 111° 55.325	Min	Hrs				
	VHF:							
Maricopa Medical Center 2601 E Roosevelt St Phoenix, AZ 85008	Lat:	N 32° 27.470	45-60	3.0	Main: 602-344-5011 ER: 602-344-5411 ext 1 then ext 2 for ED Staff 602-344-5720 Patch Line	<input checked="" type="checkbox"/>	<input type="checkbox"/>	Level 1 Trauma and Burn Center
	Long:	W 112° 01.569	Min	Hrs				
	VHF:							
	Long:	W 111° 32.270						
Summit Healthcare Hospital 2200 E. Show Low Lake Rd, Show Low, AZ 85901	Lat:	N 34° 12.166	20	1.0	ED Direct: 928-537-6371 Physician patch phone: 928-537-3090	<input checked="" type="checkbox"/>	<input type="checkbox"/>	Level 4 Trauma Center
	Long:	W 110° 01.129	Min	Hours				
	VHF:							

MEDICAL PLAN (ICS 206 WF)

Division Branch Group	Area Location Capability	
<h1>ICP</h1>	EMS Responders & Capability:	O-1.4 MEDL Jim Morgan E-28 ALS Ambo 2
	Equipment Available on Scene:	ACLS equipment, ALS Transport
	Medical Emergency Channel:	Command Channel 8
	ETA for Ambulance to Scene:	
	Air:	Guardian and Native 25-35 mins
	Ground:	TMFMD 1-1.5 hours for Ambulance from ICP
	Approved Helispot:	ICP
	Lat:	N 34° 00217
	Long:	W 110° .45642
	Approved Helispot:	
Lat:		
Long:		
Division Branch Group	Area Location Capability	
<h1>A</h1>	EMS Responders & Capability:	O-7 REMS 1 Pinetop
	Equipment Available on Scene:	ACLS equipment, UTV, Rapid Extraction
	Medical Emergency Channel:	Command Channel 8
	ETA for Ambulance to Scene:	
	Air:	Guardian and Native 25-35 mins
	Ground:	TMFMD 1-1.5 hours for Ambulance from ICP
	Approved Helispot:	
	Lat:	
Long:		
Division Branch Group	Area Location Capability	
<h1>P</h1>	EMS Responders & Capability:	O-27 IMDT 3 Wilderness Medics
	Equipment Available on Scene:	1 EMPF and 1EMTF with ALS and BLS Medical Kit
	Medical Emergency Channel:	Command Channel 8
	ETA for Ambulance to Scene:	
	Air:	Guardian and Native 25-35 mins
	Ground:	TMFMD 1-1.5 hours for Ambulance from ICP
	Approved Helispot:	
	Lat:	
Long:		
Division Branch Group	Area Location Capability	
<h1>Contingency</h1>	EMS Responders & Capability:	O-43 IMDT 5 Wilderness Medics E-45 ALS Ambo 6
	Equipment Available on Scene:	1 EMPF and 1EMTF with ALS and BLS Medical Kit, ALS Transport
	Medical Emergency Channel:	Command Channel 8
	ETA for Ambulance to Scene:	
	Air:	Guardian and Native 25-35 mins
	Ground:	TMFMD 1-1.5 hours for Ambulance from ICP
	Approved Helispot:	
	Lat:	
Long:		

After hour emergencies MEDL Jim Morgan 928-940-4409

1. Prepared By (Medical Unit Leader)	2. Date/Time	3. Reviewed By (Safety Officer)	4. Date/Time
Jim Morgan MEDL	6/13/2024 1600	VS Charles Christensen	6-13-24 1600

What is a Foreign Body In Eye?

Eyelashes prevent most particles or objects from entering the eye, and tears usually are able to rinse out particles that do get in the eye. Occasionally, a solid object or projectile can adhere to the eye or embed itself below the surface of the eye.

MEDICAL PLAN (ICS 206 WF)



Splinter Care

Overview

A splinter, or sliver, is a particle of a foreign object, such as a small piece of wood, that has embedded itself in one's skin. Splinters can sometimes come out on their own or be pulled or milked (by gently squeezing on each side of the splinter) out easily, but others can be deeply embedded and difficult to remove. All splinters should be removed as promptly as possible. If a splinter becomes wet, it makes the area prone to infection.

First Aid Guide

Self-care measures to remove a splinter are as follows:

1. Wash your hands.
2. Clean tweezers and a needle by boiling them or by pouring antiseptic solution (eg, isopropyl alcohol) over them, and let them dry.
3. With the tweezers, attempt to pull the splinter out the same direction and angle that it went in the skin.
4. If the splinter cannot be removed by the tweezers because the tip is not accessible, use the needle to make a small hole above the splinter and/or use the needle to lift the splinter out.
5. Once the splinter is fully out, wash the area and bandage it with a clean, dry dressing.

Note: If the splinter is embedded in the skin under the nail, you can cut a V-shaped notch in the nail to improve access to the area.

Who is at risk?

Splinters are quite common and affect all people. Those who are exposed to unfinished wood or machines that produce splinters of wood or metal are most prone to splinters.

Signs and Symptoms

Splinters appear as an often-small sliver of a foreign object, either fully or partially embedded into a person's skin. Splinters can be small, large, smooth, jagged, deeply embedded, or only partially embedded. If the sliver is large or jagged, there may be bleeding and redness of the affected area. There may be no bleeding if the sliver is small or fairly smooth.

Slivers often occur on the hands and feet, but they can occur anywhere on the skin or eye that comes in contact with a sliver of a foreign object.

BEAR FIRE SUPPRESSION TURNBACK GUIDELINES WMAT/BIA FTA

June 13, 2024

Location and Background Information

Agency: BIA Fort Apache Agency

Region: Western

Ignition Date: June 8, 2024

State: Arizona

County: Gila

Location Description: Gila County, approximately 5 miles southwest of the community of Cibecue on the Fort Apache Indian Reservation.

Objectives:

- Restore areas heavily impacted by suppression activities by returning them to more natural appearance.
- Prevent erosion from suppression actions through mitigation measures.
- Correct impacts to facilities, roadways, and lands, which were used as staging areas, helispots, safety zones, drop points, spike camps, pump sites, etc.
- A minimum of >70% containment of entire fire perimeter before returning the fire to local agency.
- Moving forward, staffing resources need to reflect the needs of local initial attack, and Bear Fire operations/rehabilitation, shall ensure adequate coverage before, during, and immediately following transition from Type 3 Team to local agency.

Timing:

- The Type 3 Team will determine timing of rehab activities relative to suppression, holding, and safety objectives.

Contained Dozer Lines/Dirt Roads Used as Fireline:

- Install wing ditches along dozer lines, where needed. Whenever possible, direct wing ditch to flow into unburned areas.
- Install rolling dips where recommended by Resource Advisor.
- Roads and skid trails that were closed prior to the fire, but re-opened for suppression support, should be re-closed.
- Pull berms back over dozer lines, pull in edges of line, and re-contour the land surface.
- Install tank traps to deter off-road vehicle use at start of dozer lines.

Hand Lines:

- Knock down edges and install water bars on all hand lines to the specifications by gradient. Use typical 6"-12" height.
- Leave fire line to mineral soil where possibility of reburn exists. Otherwise, pull debris onto line to discourage use as a trail.

Command Post, Safety Zones, Helispots, and Dip/Pump Sites:

- Inspect sites for spilled gas or oil and remove contaminated soil in plastic garbage bags and dispose of properly.
- Close and re-seed access roads that were opened/created during suppression activities.
- Knock down berms and re-contour land surface in safety zones to give more natural appearance.
- Scatter brush and slash to cover cleared areas.
- Replace and repair any fences that were damaged/removed during suppression activities.

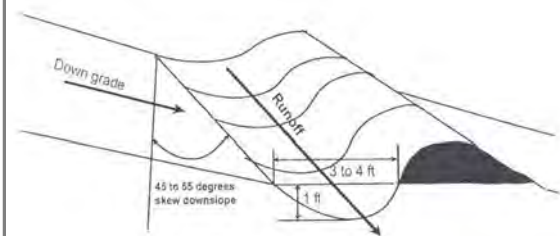
Spacing of Water Bars by Gradient

(When in doubt, reduce the spacing)

Less than 15%:	200 ft
15-30%:	75 ft
31 to 45%:	50 ft
Steeper than 45%:	35 ft

This distance may be adjusted to a lesser or greater distance based upon vegetation type, topography, and proximity to other values at risk. These values will be identified by the Resource Advisor.

Typical Water Bar for Roads



Seeding:

- Initiate seeding of incident command post, safety zones, helispots, and other disturbed areas, as soon as possible, in accordance with increased fire containment (see Table 1 for the recommended seed mix). Seed mix should be certified weed free and contain only native species to the local area.
- As an alternative to seed, hay/straw mulch, or locally chipped slash can also be used on suppression lines. Hay/straw mulch must be certified as weed free.

Table 1: Recommended seed mix (Broadcast seeding at 40 PLS/ft²)

		Mix ratio	Trial weight	Expanded	Check weight	App. rate	Purity x	lb/ac	Order by
Species	Seeds/lb.	by # seeds	ratio%x10000	# seeds/lb mix	(mix % by wt)	lb/ac PLS	Germ %	at P x G %	PLS Weight %
slender wheatgrass	159000	55.0%	0.034591195	66888	0.420681054	6.03	100%	6.03	42
mountain brome	90000	36.0%	0.04	43781	0.486460273	6.97	100%	6.97	49
Canada wildrye	115000	4.0%	0.003478261	4865	0.042300893	0.61	100%	0.61	4
western wheatgrass	110000	4.0%	0.003636364	4865	0.044223661	0.63	100%	0.63	4
bottlebrush squirreltail	192000	1.0%	0.000520833	1216	0.006334118	0.09	100%	0.09	1
	totals	100%	0.082226653	121615	1	14.33		14.33	100

Recommendations Common to All Areas:

- Collect and carry out all trash and excess supplies and equipment, from fire lines, staging areas, helispots, safety zones, drop points, spike camps, pump sites, etc.
- Remove all fire-related flagging once it is no longer needed for operations.
- Widely scatter bucked logs and hazard trees in a naturally appearing manner away from fire lines.
- Repair or replace all structures damaged during fire line construction activities (e.g., fences, gates, cattle guards, culverts, etc.).

Documentation:

- Provide electronic documentation of accomplishments of fire suppression rehabilitation activities to the respective Agency Administrators for the WMAT and BIA.

CATERER



HOURS: 0500-0900
1800-2130

AREA CLOSED
EMERGENCY
MEDICAL
AIR-EVAC
SITE

DUMPSTER

REFRIG.

FUEL

HOURS: 0500-0900
1400-2100

HAND WASH STATION
Supply

SHOWER UNIT
HOURS: 0500-1200
1400-2200

HAND WASH STATION

LOSS

IC/PCS

MORNING BRIEFING AREA

COMMS

PLANS
BRIEFING TENT

COPY TRAILER

CAMPING AREA

CAMPING AREA

Security

ICP ENTRANCE / EXIT

HEAVY EQUIP. PARKING

21-NM

TENTATIVE DEMOB LIST

Please get all of your shift tickets signed and emailed to finance. Including FINAL shift tickets.

6/14/2024

EQUIPMENT

Request Number	Resource Name	Time
E-4	ENG6 JOSEPH CITY E-2215	0700
E-6	WTT2 PINETOP 11	0730
E-7	WTT2 SUNSITES PEARCE T-304	0800
E-40	DZR2 DIXON DOZER	0830

OVERHEAD

Request Number	Resource Name	Time
O-41	Frank, Michael	1000

6/15/2024

CREWS

Request Number	Resource Name	Time
C-4	T2IA NAVAJO SCOUTS 1	0700
C-5	T2IA SAFFORD	0730
C-9	IHC BLACK MESA	0800
C-11	IHC GLOBE	0830

OVERHEAD

Request Number	Resource Name	Time
O-15	Chavez, Greg	0900



FINANCE

2024.bear.finance@firenet.gov

All paperwork will be submitted electronically, in **PDF format**, to Finance-this ensures the correct person will assist you. **If you are not able to email Finance directly, please utilize the copy trailer.** **PLEASE MAKE SURE YOUR NAME & RO# IS ON THE SUBJECT LINE OF ALL EMAILS.**

If you need help, please email us and we will answer you question(s) as soon as possible. Thank you for your patience!

If you are on an agreement of any kind make sure to send a copy direct to finance also. I.e. VIPR/EERA/CFRA etc and please send in your RO. Submit your CTR/Shift Ticket every 1-2 days.

Please ensure your phone number and an email address that you have current access to, is on your CTR's/ST's so any member of the finance section can contact you.



White Mountain Zone Type 3 Check-In Form

Please use the QR Code to check-in.

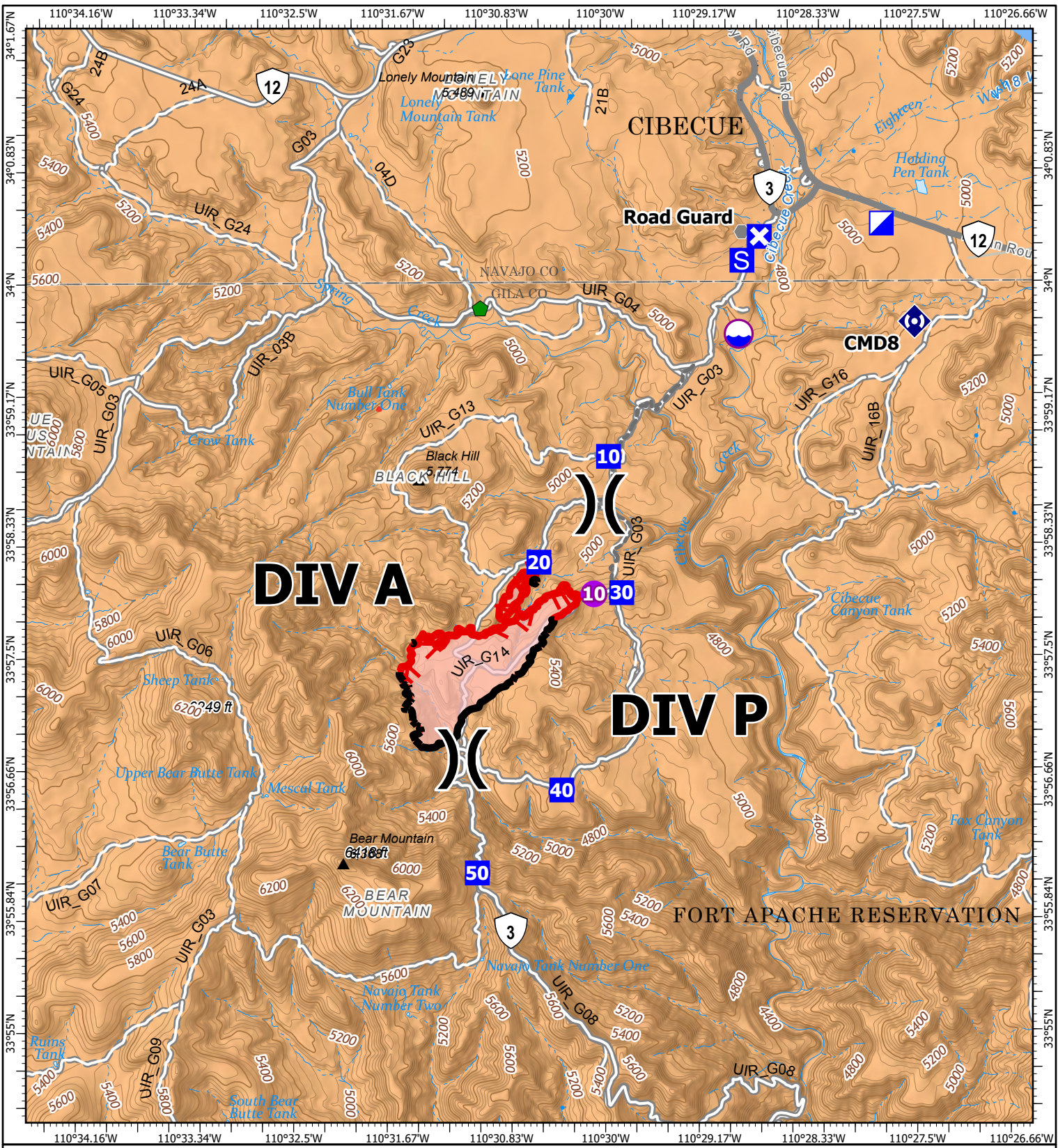
After completion of a check-in form, please email your
Resource Order, Red Card, and Crew Manifest to the status check-in:
2024.bear.checkin@firenet.gov

Please email your financial documents (such as contracts and AD forms) to Finance:
2024.bear.finance@firenet.gov
after you check-in.



[Bear Fire Check-In QR Code](https://forms.office.com/g/287LbNekYg)
<https://forms.office.com/g/287LbNekYg>

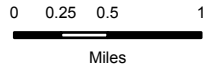
If you need assistance, you can call or text: (801) 247-7876.



DIV A

DIV P

IAP
 Bear
 AZ-FTA-000231
 06/14/2024
 447 acres at 06/11/24 2230



Structure	Other	Contained
Helispot	Repair Point	Uncontained
Division Break	Repeater	Secondary Paved
Incident Command Post	Dip Site	County Road (Dirt)
Drop Point	Other	Secondary Dirt
Closure	Temporary Flight Restriction	Unimproved dirt roads
Staging Area	Wildfire Daily Fire Perimeter	



MEDICAL PLAN (ICS 206 WF)

FOR A NON-EMERGENCY INCIDENT, WORK THROUGH CHAIN OF COMMAND TO REPORT AND TRANSPORT INJURED PERSONNEL AS NECESSARY.

FOR A MEDICAL EMERGENCY: IDENTIFY ON SCENE INCIDENT COMMANDER BY NAME AND POSITION AND ANNOUNCE

"MEDICAL EMERGENCY" TO INITIATE RESPONSE FROM IMT COMMUNICATIONS/DISPATCH.

Use the following items to communicate situation to communications/dispatch.

1. CONTACT COMMUNICATIONS / DISPATCH (**Verify correct frequency prior to starting report**)
Ex: "Communications, Div. Alpha. Stand-by for Emergency Traffic."
2. INCIDENT STATUS: *Provide incident summary (including number of patients) and command structure.*
Ex: "Communications, I have a Red priority patient, unconscious, struck by a falling tree. Requesting air ambulance to Forest Road 1 at (Lat./Long.) This will be the Trout Meadow Medical, IC is TFLD Jones. EMT Smith is providing medical care."

Severity of Emergency / Transport Priority	<input type="checkbox"/> RED / PRIORITY 1 Life or limb threatening injury or illness. Evacuation need is IMMEDIATE <i>Ex: Unconscious, difficulty breathing, bleeding severely, 2° – 3° burns more than 4 palm sizes, heat stroke, disoriented.</i> <input type="checkbox"/> YELLOW / PRIORITY 2 Serious Injury or illness. Evacuation may be DELAYED if necessary. <i>Ex: Significant trauma, unable to walk, 2° – 3° burns not more than 1-3 palm sizes.</i> <input type="checkbox"/> GREEN / PRIORITY 3 Minor Injury or illness. Non-Emergency transport <i>Ex: Sprains, strains, minor heat-related illness.</i>	
Nature of Injury or Illness & Mechanism of Injury		<i>Brief Summary of Injury or Illness (Ex: Unconscious, Struck by Falling Tree)</i>
Transport Request		<i>Air Ambulance / Short Haul/HoistGround Ambulance / Other</i>
Patient Location		<i>Descriptive Location & Lat. / Long. (WGS84)</i>
Incident Name		<i>Geographic Name + "Medical" (Ex: Trout Meadow Medical)</i>
On-Scene Incident Commander		<i>Name of on-scene IC of Incident within an Incident (Ex: TFLD Jones)</i>
Patient Care		<i>Name of Care Provider (Ex: EMT Smith)</i>

3. INITIAL PATIENT ASSESSMENT: *Complete this section for each patient as applicable (start with the most severe patient)*

Patient Assessment: See IRPG page 106

Treatment:

4. TRANSPORT PLAN:

Evacuation Location (if different): *(Descriptive Location (drop point, intersection, etc.) or Lat. / Long.) Patient's ETA to Evacuation Location:*

Helispot / Extraction Site Size and Hazards:

5. ADDITIONAL RESOURCES / EQUIPMENT NEEDS:

Example: Paramedic/EMT, Crews, Immobilization Devices, AED, Oxygen, Trauma Bag, IV/Fluid(s), Splints, Rope rescue, Wheeled litter, HAZMAT, Extraction

6. COMMUNICATIONS: Identify State Air/Ground EMS Frequencies and Hospital Contacts as applicable

Function	Channel Name/Number	Receive (RX)	Tone/NAC *	Transmit (TX)	Tone/NAC *
COMMAND					
AIR-TO-GRND					
TACTICAL					

7. CONTINGENCY: **Considerations:** *If primary options fail, what actions can be implemented in conjunction with primary evacuation method? Be thinking ahead.*

8. ADDITIONAL INFORMATION: *Updates/Changes, etc.*

REMEMBER: Confirm ETA's of resources ordered. Act according to your level of training. Be Alert. Keep Calm. Think Clearly. Act Decisively.

ACTIVITY LOG (ICS 214)

1. Incident Name:		2. Operational Period: Date From:		Date To:
		Time From:		Time To:
3. Name:		4. ICS Position:		5. Home Agency (and Unit):
6. Resources Assigned:				
Name	ICS Position	Home Agency (and Unit)		
7. Activity Log:				
Date/Time	Notable Activities			
8. Prepared by: Name: _____ Position/Title: _____ Signature: _____				
ICS 214, Page 1		Date/Time: _____		