

# **INCIDENT ACTION PLAN**

**Incident Commander:**

**Operational Period:**

## INCIDENT OBJECTIVES (ICS 202)

<b>1. Incident Name:</b>	<b>2. Operational Period: DAY</b>	
BEAR	Date/Time From: 06/15/2024 0600      SAT	Date/Time To: 06/15/2024 2200      SAT
<b>3. Objective(s):</b>		
<ul style="list-style-type: none"> <li>• Maintain the safety of firefighters and public as the highest priority using sound risk management</li> <li>• Provide protection to communities, infrastructure, values at risk, and contain the fire to the smallest size possible by utilizing point protection and direct or indirect control methods</li> <li>• Maintain and develop partnerships and relationships with cooperating agencies and stakeholders.</li> <li>• Minimize impacts to cultural, heritage, recreation, natural resource, and wildlife values by coordinating suppression actions with READs and AAs.</li> <li>• Provide initial attack response within TFR areas, specifically South of BIA 12 Rd, East of Salt River Draw, North of Cibecue Creek and G8 and B8 roads, West of Hwy 60 and G17 road.</li> </ul>		
<b>Values at Risk</b>		
<ul style="list-style-type: none"> <li>• Community of Cibecue</li> <li>• Emory Oak patch</li> <li>• Cibecue Falls</li> <li>• Natural Springs</li> <li>• Cultural Sites</li> <li>• Heritage Resources</li> </ul>		
<b>4. Operational Period Command Emphasis:</b>		
We are <b>ALL</b> accountable for <b>SAFE</b> behaviors!		
<b>General Situational Awareness:</b>		
Analyze the risk vs. gain of your assignment.		
Are you doing the right thing for your personnel and giving them a safe working environment? If yes, then proceed.		
If no, then reevaluate the assignment and provide solutions. LCES pre-identify multiple escape routes.		
<b>5. Site Safety Plan Required?</b> Yes <input type="checkbox"/> No <input checked="" type="checkbox"/>		
<b>Approved Site Safety Plan(s) Located at:</b>		
<b>6. Incident Action Plan</b> (the items checked below are included in this Incident Action Plan):		
<input checked="" type="checkbox"/> ICS 202	<input type="checkbox"/> ICS 207	Other Attachments:
<input checked="" type="checkbox"/> ICS 203	<input type="checkbox"/> ICS 208	<input type="checkbox"/> _____
<input checked="" type="checkbox"/> ICS 204	<input checked="" type="checkbox"/> ICS 220	<input type="checkbox"/> _____
<input checked="" type="checkbox"/> ICS 205	<input checked="" type="checkbox"/> Map/Chart	<input type="checkbox"/> _____
<input type="checkbox"/> ICS 205A	<input type="checkbox"/> Weather Forecast/Tides/Currents	<input type="checkbox"/> _____
<input checked="" type="checkbox"/> ICS 206		
<b>7. Prepared by:</b> RUTH KOHLER	<b>Position/Title:</b> PLANNING SECTION CHIEF	<b>Signature:</b>
<b>8. Approved by Incident Commander:</b>	<b>Name:</b> JOSH SALAZAR (T)	<b>Signature:</b>
<b>ICS 202</b>	<b>IAP Page</b>	<b>Date/Time:</b> 06/14/2024 2000

## ORGANIZATION ASSIGNMENT LIST (ICS 203)

<b>1. Incident Name:</b>		<b>2. Operational Period: DAY</b>	
BEAR		Date/Time From: 06/15/2024 0600 SAT	Date/Time To: 06/15/2024 2200 SAT
<b>3. Incident Commander(s) and Command Staff:</b>		<b>7. Operations Section:</b>	
IC/UC	PLUMB, BEN SALAZAR, JOSH (T)	OPS SECTION CHIEF	GABLER, JUSTIN
DEPUTY		PLANNING OPS	LOPEZ, TOM
SAFETY OFFICER	CHRISTENSEN, CC	DEPUTY OPS SECTION CHIEF	
INFORMATION OFFICER	JOHNSON, STEVEN	STAGING AREA	
LIAISON OFFICER	BALDRIDGE, AARON		
<b>4. Agency/Organization Representative(s):</b>		DIVISION/GROUP	ALPHA MILLER, JOSHUA GREGG, BUTCH (T)
<b>Agency/Organization</b>	<b>Name</b>	DIVISION/GROUP	PAPA RANEY, DAVID
FT APACHE SUPERINTENDENT	BEN, LEON	DIVISION/GROUP	CONTINGENCY DAZEN, MARWIN (T) SIGG, MATTHEW (T)
FT APACHE AGENCY ADMIN	DIVALENTINO, RICK	<b>7b. Air Operations Branch:</b>	
RESOURCE ADVISOR	PARKER, SEAN	AIR OPS BRANCH DIRECTOR	WILSON, ROB
FOREST MANAGER	BEATTY, CHRIS	AIR ATTACK SUPERVISOR	
PHEP COORDINATOR	THOMPSON, LEO	AIR SUPPORT SUPERVISOR	
IBA	BOATRIGHT, AMANDA	HELICOPTER COORDINATOR	
<b>5. Planning Section:</b>		AIR TANKER COORDINATOR	
CHIEF	KOHLER, RUTH BUCE, LES (T)	<b>8. Finance/Administration Section:</b>	
DEPUTY		CHIEF	PUTT, KARILYN SANCHEZ, ANDREA (T)
RESOURCES UNIT		DEPUTY	
SITUATION UNIT	JEANNE, JULIETTE	TIME UNIT	DINKEL, MICAYLA (T)
DOCUMENTATION UNIT		PROCUREMENT UNIT	
DEMOBILIZATION UNIT		COMPENSATION UNIT	
GIS SPECIALIST	KIRK, BOB PAXSON, DESIREE (T)	COST UNIT	DEVLIN, LANCE (T)
TECHNOLOGY SUPPORT SPECIALIST	HERNANDEZ, GONZALO		
STATUS CHECK IN	BARUA, AJ		
FIRE BEHAVIOR ANALYST			
<b>6. Logistics Section:</b>			
CHIEF	WALLACE, RICHARD BEAUDOIN, GENE		
DEPUTY	MCALISTER, DEAN J		
SUPPLY UNIT	WHARTON, TJ		
FACILITIES UNIT	OLMSTEAD, GREG (T)		
BASE CAMP MANAGER	TOWNSEND, RICK MILLER, KASEY (T)		
GROUND SUPPORT UNIT			
COMMUNICATIONS UNIT	NORMAN, MICHAEL		
MEDICAL UNIT	MORGAN, JAMES		
DAY SEC 1	MUNDY, TYLER (530) 318-0397		
NIGHT SEC 1	RYAN, TIMOTHY (409) 273-2504		
<b>9. Prepared By:</b>	<b>Name:</b> LES BUCE	<b>Position/Title:</b> PSC3(T)	<b>Signature:</b>
ICS 203	IAP Page	<b>Date/Time:</b> 06/14/2024 2000	

Spot Forecast for Bear...Fort Apache  
National Weather Service Flagstaff AZ

.DISCUSSION...Hot and dry this weekend, with west through southwest winds in the daytime, light and variable at night.

.SATURDAY...

Sky/weather.....Sunny.  
Chance of pcpn.....0 percent.  
Max temperature.....98 to 100.  
Min humidity.....8 to 9 percent.  
Wind (20 ft).....West-southwest winds 6 to 10 mph.  
LAL.....1.  
Haines Index.....5 or moderate potential for large plume  
dominated fire growth.  
Max Vent Rate.....Excellent.

.SATURDAY NIGHT...

Sky/weather.....Clear.  
Chance of pcpn.....0 percent.  
Min temperature.....60 to 62.  
Max humidity.....25 to 30 percent.  
Wind (20 ft).....Winds becoming light and variable 3 to 5 mph  
after sunset.  
LAL.....1.  
Haines Index.....5 or moderate potential for large plume  
dominated fire growth.  
Min Vent Rate.....Poor.

.SUNDAY...

Sky/weather.....Sunny.  
Chance of pcpn.....0 percent.  
Max temperature.....96 to 98.  
Min humidity.....7 to 8 percent.  
Wind (20 ft).....Southwest winds 8 to 12 mph with gusts to 16  
mph.  
LAL.....1.  
Haines Index.....5 or moderate potential for large plume  
dominated fire growth.  
Max Vent Rate.....Excellent.

## Division/Group Assignment List (ICS 204 WF)

Controlled Unclassified Information//Basic

<b>1. Incident Name:</b>			<b>3.</b>				
BEAR			<b>Branch:</b>		<b>Division/Group:</b>		
<b>2. Operational Period: DAY</b>							
Date/Time From: 06/15/2024 0600 SAT		Date/Time To: 06/15/2024 2200 SAT		<b>ALPHA</b>			
<b>4. Operations Personnel</b>							
<b>OPERATIONS CHIEF</b>		GABLER, JUSTIN		<b>BRANCH DIRECTOR</b>			
<b>DIVISION/GROUP SUPERVISOR</b>		MILLER, JOSHUA GREGG, BUTCH (T)		<b>AIR ATTACK SUPERVISOR</b>		WILSON, ROB	
<b>5. Resources Assigned this Period</b>							
Strike Team / Task Force / Resource Designator		LWD	Leader		Number Persons	Drop Off PT./Time	Pick Up PT./Time
IHC FORT APACHE C-2		06/22	QUINTERO, BRIAN		19	ICP/0600	ICP/2000
T2IA FORT APACHE #01 C-8		06/22	LEE, LENWOOD		19	ICP/0600	ICP/2000
REMS PINETOP 1 O-7		06/23	BROWN, ERIC		4	ICP/0600	ICP/2000
SOFC O-1.32		06/22	STRICKLAND, GARY		1	ICP/0600	ICP/2000
<b>6. Control Operations/Work Assignments:</b>							
<ul style="list-style-type: none"> <li>Construct direct/indirect line where needed, and where the highest probability of success exists.</li> <li>Keep fire to the south of G4 road and reduce footprint to the west as safely as possible.</li> <li>Start mop up operations within the contained area.</li> <li>Begin suppression repair work as appropriate for the division.</li> <li>End State: Line has been prepped, constructed and secured with minimal impacts to Values at Risk.</li> </ul>							
<b>7. Special Instructions:</b>							
<ul style="list-style-type: none"> <li>Consider natural resources, cultural resources, and any improvements when constructing line.</li> <li>Document line locations and communicate information to Resource Advisors.</li> <li>Document any possible retardant lines to waterways.</li> </ul>							
<b>8. Division/Group Communication Summary</b>							
Function	Channel	RX Frequency N/W	RX Tone/NAC	TX Frequency N/W	TX Tone/NAC	Mode	
COMMAND	8	170.4500 N	123.0	168.1000 N	123.0	A	
TACTICAL	1	168.0500 N	123.0	168.0500 N	123.0	A	
AIR TO GROUND	13	166.9000 N		166.9000 N		A	
<b>9. Prepared By (Resource Unit Leader)</b>			<b>Approved By (Planning Section Chief)</b>		<b>Date</b>	<b>Time</b>	
LES BUCE			RUTH KOHLER		06/14/2024	2000	

## Division/Group Assignment List (ICS 204 WF)

Controlled Unclassified Information//Basic

<b>1. Incident Name:</b>				<b>3.</b>			
BEAR				<b>Branch:</b>		<b>Division/Group:</b>	
<b>2. Operational Period: DAY</b>							
Date/Time From: 06/15/2024 0600 SAT		Date/Time To: 06/15/2024 2200 SAT		<b>PAPA</b>			
<b>4. Operations Personnel</b>							
<b>OPERATIONS CHIEF</b>		GABLER, JUSTIN		<b>BRANCH DIRECTOR</b>			
<b>DIVISION/GROUP SUPERVISOR</b>		RANEY, DAVID		<b>AIR ATTACK SUPERVISOR</b>		WILSON, ROB	
<b>5. Resources Assigned this Period</b>							
Strike Team / Task Force / Resource Designator		LWD	Leader	Number Persons	Drop Off PT./Time	Pick Up PT./Time	
IHC ENTIAT C-3		06/22	PICKARD, DANIEL E	21	ICP/0600	ICP/2000	
MED TEAM 3		06/22	WARD, CHEYENNE	2	ICP/0600	ICP/2000	
TFLD(T) O-1.11		06/22	BRANNON, CHRISTINA	1	ICP/0600	ICP/2000	
SOFC O-1.32		06/22	STRICKLAND, GARY	1	ICP/0600	ICP/2000	
<b>6. Control Operations/Work Assignments:</b>							
<ul style="list-style-type: none"> <li>Construct direct/indirect line where needed, and where the highest probability of success exists.</li> <li>Keep fire to the west of G3 road and look for contingent lines to the east.</li> <li>Start mop up operations within the contained area.</li> <li>Begin suppression repair work as appropriate for the division.</li> <li>End State: Line has been prepped, constructed and secured with minimal impacts to Values at Risk.</li> </ul>							
<b>7. Special Instructions:</b>							
<ul style="list-style-type: none"> <li>Consider natural resources, cultural resources, and any improvements when constructing line.</li> <li>Document line locations and communicate information to Resource Advisors.</li> <li>Document any possible retardant lines to waterways.</li> </ul>							
<b>8. Division/Group Communication Summary</b>							
Function	Channel	RX Frequency N/W	RX Tone/NAC	TX Frequency N/W	TX Tone/NAC	Mode	
COMMAND	8	170.4500 N	123.0	168.1000 N	123.0	A	
TACTICAL	2	168.2000 N	123.0	168.2000 N	123.0	A	
AIR TO GROUND	13	166.9000 N		166.9000 N		A	
<b>9. Prepared By (Resource Unit Leader)</b>			<b>Approved By (Planning Section Chief)</b>			<b>Date</b>	<b>Time</b>
LES BUCE			RUTH KOHLER			06/14/2024	2000

## Division/Group Assignment List (ICS 204 WF)

Controlled Unclassified Information//Basic

<b>1. Incident Name:</b>			<b>3.</b>				
BEAR			<b>Branch:</b>		<b>Division/Group:</b>		
<b>2. Operational Period: DAY</b>							
Date/Time From: 06/15/2024 0600 SAT		Date/Time To: 06/15/2024 2200 SAT		<b>CONTINGENCY</b>			
<b>4. Operations Personnel</b>							
<b>OPERATIONS CHIEF</b>		GABLER, JUSTIN		<b>BRANCH DIRECTOR</b>			
<b>DIVISION/GROUP SUPERVISOR</b>		DAZEN, MARWIN * (T) SIGG, MATTHEW (T)		<b>AIR ATTACK SUPERVISOR</b>		WILSON, ROB	
<b>5. Resources Assigned this Period</b>							
Strike Team / Task Force / Resource Designator		LWD	Leader		Number Persons	Drop Off PT./Time	Pick Up PT./Time
T2IA TWIN PEAKS C-10		06/24	STILSON, CHAD		21	ICP/0600	ICP/2000
*ENG6 AZCOF E672 E-27		06/16	JACOBSEN, JOHN		5	ICP/0600	ICP/2000
*ENG6 PINETOP B5 E-5		06/22	CRAIG, DARRELL A		3	ICP/0600	ICP/2000
*ENG - 5261		06/22	PAXSON, PETER		3	ICP/0600	ICP/2000
ENG6 VALKYRIE FIRE E-2		06/23	REESE, CHARLES		3	ICP/0600	ICP/2000
WTT1 - 41 PINE STRAWBERRY E-8		06/23	TURLEY, GARRET		2	ICP/0600	ICP/2000
WTS1 - STEEPLE E-1		06/21	ZOSPAH, LOUIS		2	ICP/0600	ICP/2000
DZR2 - MAYER E-3		06/22	MAYER, B		2	ICP/0600	ICP/2000
SKD3 DIXON		06/27	SKILES, AMBER		3	ICP/0600	ICP/2000
AMBO 6 E-45		06/26	STENHOUSE, COLIN		2	ICP/0600	ICP/2000
MED TEAM 5 O-43		06/25	JONES, JAKE		2	ICP/0600	ICP/2000
HEQB (T) O-30		06/24	LARKIN, ANDREW		1	ICP/0600	ICP/2000
HEQB O-6		06/25	JONES, MATT		1	ICP/0600	ICP/2000
SOFC O-1.32		06/22	STRICKLAND, GARY		1	ICP/0600	ICP/2000
<b>6. Control Operations/Work Assignments:</b>							
<p>Develop a plan for structure protection if fire were to threaten the community of Cibecue.          Provide initial attack response within the TFR area.          Begin suppression repair as appropriate for the division.          * Denotes available for IA as needed.</p>							
<b>7. Special Instructions:</b>							
<b>8. Division/Group Communication Summary</b>							
Function	Channel	RX Frequency N/W	RX Tone/NAC	TX Frequency N/W	TX Tone/NAC	Mode	
COMMAND	8	170.4500 N	123.0	168.1000 N	123.0	A	
TACTICAL	3	168.6000 N	123.0	168.6000 N	123.0	A	
AIR TO GROUND	13	166.9000 N		166.9000 N		A	
<b>9. Prepared By (Resource Unit Leader)</b>			<b>Approved By (Planning Section Chief)</b>		<b>Date</b>	<b>Time</b>	
LES BUCE			RUTH KOHLER		06/14/2024	2000	





## HELICOPTER EXTRACTION OPERATIONS

The intent of helicopter insertion/extraction operations is to facilitate the movement of personnel to and from inaccessible areas. These operations are not meant to be a medical transport resource; life flight and ground transportation should always be ordered in addition to the extraction aircraft and crew.

### ORDERING:

- On-scene EMT and/or Incident within Incident IC determines that an extraction helicopter is needed and places the order through the pre-established procedures:
  - Division Supervisor
  - Incident Communications
  - Dispatch Center
- When ordering extraction aircraft provide the following information:
  - Location (Lat/Long) of patient
  - Known Hazards
  - Wind Speed and Direction
  - Terrain
  - Incident Updates

### SITE SELECTION:

- The helicopter crew will confirm the extraction location when they arrive on scene. However, a general rule is any clearing that is 10'x10' with visible sight lines to the sky is a suitable extraction site.
- If the terrain is steep, excavating a platform or shelf can make it easier for patient packaging.

QR Code-Short-haul Site Selection Video



### CONSIDERATIONS:

- Short-haul and hoist are safe and efficient operations for extracting injured personnel of any severity including “Green” patients.
- Ensure area is clear of non-essential items, hazards, and personnel.
- Rotor wash may affect overhead hazards and blowing dust/debris can create brown out conditions or influence fire behavior.
- Aerial Supervision is valuable for coordinating aviation medevac/extraction missions and should be ordered if available and not currently present.
- The aircrew will make the final assessment of the mission. Always have a contingency plan in case a helicopter cannot complete the request.

### DEFINITIONS:

**Rescue Hoist:** A cable winching device mounted to the helicopter that can lower/raise persons attached to a cable.

- Common cable lengths are 250-300 feet.

**Short-haul:** To insert or extract one or more persons suspended on a fixed line beneath a helicopter.

- Common short-haul line lengths are 100, 150, and 250 feet. The lines can also be connected for a longer line if the situation requires it.

# Short-Haul Operations

## CAPABILITIES

- During an operational Short-Haul the helicopter is capable of inserting Short-Haulers into an area with tight canopy cover and/or technical terrain.
- Haul line lengths range from 100 feet to 350 feet.
- Short hauler and/or medical gear can be delivered to the medical scene even if extraction by short-haul is not necessary.

## ORDERING

- EMT or Medical Incident IC determines medical extraction is required.
- Follow local established procedures and/or Medical Incident Report (MIR) in the IRPG.
- Confirm aircraft type, call sign, estimated time of arrival and frequency.
- Give site selection information when ordering: hazards (i.e. ash, smoke, snags, aerial), tree height, terrain, and patient transport configuration (supine or seated position). Repeat hazards and give updated weather conditions as well as brief patient update to responding helicopter.

**PROCESS:** The helicopter will fly to the coordinates provided. They will make contact with ground personnel on scene with the patient using an identified air-to-ground frequency. The helicopter will complete a short-haul recon and size up, gather patient update information and then fly to a landing zone (LZ) to configure for short-haul operations. The helicopter will be monitoring the appropriate air-to-ground, air guard and victor frequencies. From this point, ground resources should only contact the helicopter in case of an emergency. During the insertion and extraction process ground personnel must be clear of the area.

## ON SCENE: EXPECT THE FOLLOWING

- 1 or 2 rescuers (at least one qualified as an EMT or higher)
- Backboard (if needed and not already on scene)
- All equipment necessary for patient extraction

The Patient Extraction Bag accommodates most backboards.  
-A patient on a backboard, TRS, SKED or litter will be inserted into the bag.



The Seat Harness is used for patients not requiring the use of a backboard.



INCIDENT RADIO COMMUNICATIONS PLAN I-205		1. INCIDENT NAME	2. DATE/TIME PREPARED	3. OPERATIONAL PERIOD DATE/TIME
		<b>Bear Fire</b>	6-14-2024 1800	6-15-2024 0600 - 2000

4. BASIC RADIO CHANNEL UTILIZATION											
Ch #	Function	Channel Name	Assignment	RX Freq	N/W	RX Tone/NAC	TX Freq	N/W	TX Tone/NAC	Mode Analog (A) Digital (D) Mixed (M)	Remarks
1	Tactical	TAC 1	DIV A	168.0500	N	123.0	168.0500	N	123.0	A	DIV A
2	Tactical	TAC 2	DIV P	168.2000	N	123.0	168.2000	N	123.0	A	DIV P
3	Tactical	TAC 3	CONTIN...	168.6000	N	123.0	168.6000	N	123.0	A	CONTINGENCY
4	Tactical	TAC 4	I/A	166.7250	N	123.0	166.7250	N	123.0	A	I/A
5	Tactical	TAC 5	NOT ASSIGNED	166.7750	N	123.0	166.7750	N	123.0	A	
6	Tactical	TAC 6	NOT ASSIGNED	168.2500	N	123.0	168.2500	N	123.0	A	
7	I/A A/G	LOCAL I/A	I/A	167.1750	N	0.0	167.1750	N	0.0	A	LOCAL I/A
8	Command	CMD 8	COMMAND	170.4500	N	123.0	168.1000	N	123.0	A	
9	Command	UNASSIGNED	NOT ASSIGNED		N			N		A	
10	FIRE CHEDISKI	SPVL DISP		172.6750	N	151.4	166.3625	N	186.2	A	SPRINGERVILLE DISPATCH
11	FIRE MAVERICK	SPVL DISP		172.6750	N	151.4	166.3625	N	151.4	A	SPRINGERVILLE DISPATCH
12	FIRE MCKAYS	SPVL DISP		172.6750	N	151.4	166.3625	N	162.2	A	SPRINGERVILLE DISPATCH
13	A - A/G	A	Primary	166.9000	N	0.0	166.9000	N	0.0	A	Air Ops with Air Attack
14	B - A/G	B	Secondary	168.7375	N	0.0	168.7375	N	0.0	A	Air Ops with Bucket
15	St Mutual Aid	VFIRE 21	Medical Evac	154.2800	N	0.0	154.2800	N	0.0	A	// MEDICAL EVAC //
16	AIR GUARD			168.6250	N	0.0	168.6250	N	110.9	A	

5. Special Instructions: COMM UNIT Phone # 202-664-9605

6. I-205 Prepared By: Communications Unit Leader Name: **COML M. NORMAN** Signature: *Mike Norman* \*.\*



# SAFETY MESSAGE

*Fire fighter safety comes first on every fire, every time*



AZ-FTA-000231 Bear Fire Incident injuries 0 incident accidents 0 illness 3

We are **ALL** accountable for **SAFE** behaviors!

For Day Operations: **June 15, 2024**

**INCIDENT: Bear Fire**

Date Prepared: June 14, 2024, TIME: 1700

**Major Hazards and Risks:**

- **Communications:** Know the correct incident frequencies and test often. Use human repeaters.
- **Direct Line construction/Mopup:** Follow instructions on 204, Leaders briefing. No Freelancing.
- **Heat Related injuries: frequent breaks and eat heathy meals with good sleep recovery.**
- **Medical Emergencies (IWI) Identify resources on all Divisions.**

## **Primary-Alternate-Contingency-Emergency**

### **My Safety your number 1 priority**

- You will have to make personal decisions concerning safety.
- Follow safe work practices for all tasks.
- Speak up when you observe a hazard that will place others at risk.
- Never transfer risk to someone else
- Ensure instructions are clearly understood!
- Complacency kills your safety.



### **Extreme weather causes Fatigue.**

Exposure to the elements of strong winds, Hot air temperatures can cause minor to severe fatigue and even worse is not noticed or treated.

- Stay hydrated, (and drink some type of electrolyte)
- Pace yourself
- Be a healthy eater.
- Get a good night rest.
- Take care of you, good hygiene improves your body.
- Do not drink coffee or sports drinks all day.

**Use the buddy system and watch for signs and symptoms of HRI's.**

**It takes twice as long to recover from heat exhaustion.**

*Thanks, from your SAFETY TEAM!*

*Prepared by Charles CC Christensen  
Gary Strickland*

# MEDICAL PLAN (ICS 206 WF)

1. Incident/Project Name			2. Operational Period					
Bear Fire			Date/Time Saturday, June 15, 2024 0700-2200					
3. Ambulance Services								
Name	Complete Address	Phone	Advanced Life Support (ALS)					
			Yes	No				
* WMAT EMS	103 W. Rainbow St, Whiteriver, AZ 85941	928-338-3095	xxxxxxx					
Timber Mesa Fire Medical	911 Ambo	928-537-5091 Show Low PD Dispatch	xxxxxxx					
Pinetop Fire District	911 Ambo	928-537-5091 Show Low PD Dispatch	xxxxxxx					
Heber Overgaard Fire Medical	911 Ambo	928-537-5091 Show Low PD Dispatch	xxxxxxx					
4. Air Ambulance Services								
Name	Phone	Type of Aircraft & Capability						
Air Evac	1-877-411-5280	AV 32 is an A-star @ Show Low Airport 12-20 min ETA to scene Each can transport one patient, each helicopter has night vision (Vfire 21 for contact with helicopter)						
Native Air	1-877-411-5280	Native 9 is an A-star B407 @ Summit Hospital 12-20 min ETA to scene Can transport one patient, each helicopter has night vision (Vfire 21 for contact with helicopter)						
AZ Highway Patrol- Ranger	800-247-6337- Phx Dispatch/ Incident Comms	DPS Ranger is a Bell 407 (Short-Haul) in Tucson, Bell 429 (Hoist) Phoenix and Flagstaff. ETA to ICP 30min to 2 hours depending on mission and availability (VFire 21 for contact with helicopter)						
5. Hospitals								
Name Complete Address	GPS Datum – WGS 84 Coordinate Standard Degrees Decimal Minutes DD° MM.MMM' N - Lat DD° MM.MMM' W - Long		Travel Time from ICP		Phone	Helipad		Level of Care Facility
	Lat:	Long:	Air	Gnd		Yes	No	
Whiteriver Indian Hospital 200 W. Hospital Drive Whiteriver, AZ 85941	Lat:	N 33° 52.34.4094	15-20	1.0	Main 928-338-4911	<input checked="" type="checkbox"/>		Level 4 Trauma Center
	Long:	W 109° 57.40.233	Min	hrs				
	VHF:							
Honor Health Scottsdale Osborne Medical Center 7400 E Scottsdale Rd Scottsdale, AZ 85251	Lat:	N 33° 29.347	45-60	3.0	Main: 480-882-4000 ER: 480-882-4815	<input checked="" type="checkbox"/>	<input type="checkbox"/>	Level 1 Trauma Center
	Long:	W 111° 55.325	Min	Hrs				
	VHF:							
Maricopa Medical Center 2601 E Roosevelt St Phoenix, AZ 85008	Lat:	N 32° 27.470	45-60	3.0	Main: 602-344-5011 ER: 602-344-5411 ext 1 then ext 2 for ED Staff 602-344-5720 Patch Line	<input checked="" type="checkbox"/>	<input type="checkbox"/>	Level 1 Trauma and Burn Center
	Long:	W 112° 01.569	Min	Hrs				
	VHF:							
	Long:	W 111° 32.270						
Summit Healthcare Hospital 2200 E. Show Low Lake Rd, Show Low, AZ 85901	Lat:	N 34° 12.166	20	1.0	ED Direct: 928-537-6371 Physician patch phone: 928-537-3090	<input checked="" type="checkbox"/>	<input type="checkbox"/>	Level 4 Trauma Center
	Long:	W 110° 01.129	Min	Hours				
	VHF:							

## MEDICAL PLAN (ICS 206 WF)

Division   Branch   Group	Area Location Capability	
<h1>ICP</h1>	<b>EMS Responders &amp; Capability:</b>	O-1.4 MEDL Jim Morgan E-28 ALS Ambo 2
	<b>Equipment Available on Scene:</b>	ACLS equipment, ALS Transport
	<b>Medical Emergency Channel:</b>	Command Channel 8
	<b>ETA for Ambulance to Scene:</b>	
	<b>Air:</b>	Guardian and Native 25-35 mins
	<b>Ground:</b>	TMFMD 1-1.5 hours for Ambulance from ICP
	<b>Approved Helispot:</b>	ICP
	<b>Lat:</b>	N 34° 00217
	<b>Long:</b>	W 110° .45642
	<b>Approved Helispot:</b>	
<b>Lat:</b>		
<b>Long:</b>		
Division   Branch   Group	Area Location Capability	
<h1>A</h1>	<b>EMS Responders &amp; Capability:</b>	O-7 REMS 1 Pinetop
	<b>Equipment Available on Scene:</b>	ACLS equipment, UTV, Rapid Extraction
	<b>Medical Emergency Channel:</b>	Command Channel 8
	<b>ETA for Ambulance to Scene:</b>	
	<b>Air:</b>	Guardian and Native 25-35 mins
	<b>Ground:</b>	TMFMD 1-1.5 hours for Ambulance from ICP
	<b>Approved Helispot:</b>	
	<b>Lat:</b>	
	<b>Long:</b>	
	<b>Approved Helispot:</b>	
Division   Branch   Group	Area Location Capability	
<h1>P</h1>	<b>EMS Responders &amp; Capability:</b>	O-27 IMDT 3 Wilderness Medics
	<b>Equipment Available on Scene:</b>	1 EMPF and 1EMTF with ALS and BLS Medical Kit
	<b>Medical Emergency Channel:</b>	Command Channel 8
	<b>ETA for Ambulance to Scene:</b>	
	<b>Air:</b>	Guardian and Native 25-35 mins
	<b>Ground:</b>	TMFMD 1-1.5 hours for Ambulance from ICP
	<b>Approved Helispot:</b>	
	<b>Lat:</b>	
	<b>Long:</b>	
	<b>Approved Helispot:</b>	
Division   Branch   Group	Area Location Capability	
<h1>Contingency</h1>	<b>EMS Responders &amp; Capability:</b>	O-43 IMDT 5 Wilderness Medics E-45 ALS Ambo 6
	<b>Equipment Available on Scene:</b>	1 EMPF and 1EMTF with ALS and BLS Medical Kit, ALS Transport
	<b>Medical Emergency Channel:</b>	Command Channel 8
	<b>ETA for Ambulance to Scene:</b>	
	<b>Air:</b>	Guardian and Native 25-35 mins
	<b>Ground:</b>	TMFMD 1-1.5 hours for Ambulance from ICP
	<b>Approved Helispot:</b>	
	<b>Lat:</b>	
	<b>Long:</b>	
	<b>Approved Helispot:</b>	

After hour emergencies MEDL Jim Morgan 928-940-4409

1. Prepared By (Medical Unit Leader)	2. Date/Time	3. Reviewed By (Safety Officer)	4. Date/Time
Jim Morgan MEDL	6/14/2024 1600	VS Charles Christensen	6-14-24 1600

## MEDICAL PLAN (ICS 206 WF)



**Insect Stings**

**Emergency Condition - Transport patient by most rapid, appropriate method available:  
Stings**

- **With anaphylaxis**

**Urgent Condition - Hospital evaluation, Ambulance transport as needed: Stings:**

- **With signs of surrounding tissue infection**

**Routine Condition - Medical Unit Treatment: Stings or Bites**

- **With only local reactions**

### **Signs and Symptoms:**

- |                                    |                        |
|------------------------------------|------------------------|
| *Erythema (redness)                | *Pain at site of sting |
| *Swelling                          | *Blister               |
| *Cellulitis (swelling and redness) |                        |

### **Treatment:**

**Routine – Medical Unit evaluation and treatment**

- **Remove stinger**
- **Cleanse site**
- **Apply antiseptic**
- **Do not apply ice directly to area, use a towel between the skin and ice placed in a plastic bag, (alternate 10 minutes on / 10 minutes off)**
- **Elevate extremity above the heart**
- **Consider OTC antihistamines and/or OTC topical steroids – Follow package dosage instructions.**

# BEAR FIRE SUPPRESSION TURNBACK GUIDELINES WMAT/BIA FTA

## June 13, 2024

### Location and Background Information

**Agency:** BIA Fort Apache Agency

**Region:** Western

**Ignition Date:** June 8, 2024

**State:** Arizona

**County:** Gila

**Location Description:** Gila County, approximately 5 miles southwest of the community of Cibecue on the Fort Apache Indian Reservation.

#### Objectives:

- Restore areas heavily impacted by suppression activities by returning them to more natural appearance.
- Prevent erosion from suppression actions through mitigation measures.
- Correct impacts to facilities, roadways, and lands, which were used as staging areas, helispots, safety zones, drop points, spike camps, pump sites, etc.
- A minimum of >70% containment of entire fire perimeter before returning the fire to local agency.
- Moving forward, staffing resources need to reflect the needs of local initial attack, and Bear Fire operations/rehabilitation, shall ensure adequate coverage before, during, and immediately following transition from Type 3 Team to local agency.

#### Timing:

- The Type 3 Team will determine timing of rehab activities relative to suppression, holding, and safety objectives.

#### Contained Dozer Lines/Dirt Roads Used as Fireline:

- Install wing ditches along dozer lines, where needed. Whenever possible, direct wing ditch to flow into unburned areas.
- Install rolling dips where recommended by Resource Advisor.
- Roads and skid trails that were closed prior to the fire, but re-opened for suppression support, should be re-closed.
- Pull berms back over dozer lines, pull in edges of line, and re-contour the land surface.
- Install tank traps to deter off-road vehicle use at start of dozer lines.

#### Hand Lines:

- Knock down edges and install water bars on all hand lines to the specifications by gradient. Use typical 6"-12" height.
- Leave fire line to mineral soil where possibility of reburn exists. Otherwise, pull debris onto line to discourage use as a trail.

#### Command Post, Safety Zones, Helispots, and Dip/Pump Sites:

- Inspect sites for spilled gas or oil and remove contaminated soil in plastic garbage bags and dispose of properly.
- Close and re-seed access roads that were opened/created during suppression activities.
- Knock down berms and re-contour land surface in safety zones to give more natural appearance.
- Scatter brush and slash to cover cleared areas.
- Replace and repair any fences that were damaged/removed during suppression activities.

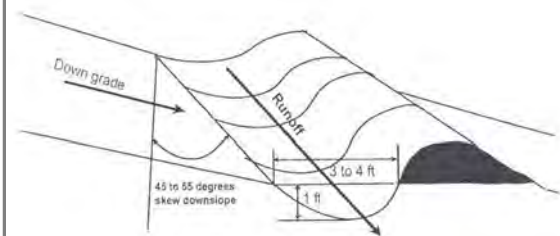
#### Spacing of Water Bars by Gradient

(When in doubt, reduce the spacing)

<b>Less than 15%:</b>	<b>200 ft</b>
<b>15-30%:</b>	<b>75 ft</b>
<b>31 to 45%:</b>	<b>50 ft</b>
<b>Steeper than 45%:</b>	<b>35 ft</b>

This distance may be adjusted to a lesser or greater distance based upon vegetation type, topography, and proximity to other values at risk. These values will be identified by the Resource Advisor.

#### Typical Water Bar for Roads





**Seeding:**

- Initiate seeding of incident command post, safety zones, helispots, and other disturbed areas, as soon as possible, in accordance with increased fire containment (see Table 1 for the recommended seed mix). Seed mix should be certified weed free and contain only native species to the local area.
- As an alternative to seed, hay/straw mulch, or locally chipped slash can also be used on suppression lines. Hay/straw mulch must be certified as weed free.

**Table 1: Recommended seed mix (Broadcast seeding at 40 PLS/ft<sup>2</sup>)**

		Mix ratio	Trial weight	Expanded	Check weight	App. rate	Purity x	lb/ac	Order by
<b>Species</b>	<b>Seeds/lb.</b>	<b>by # seeds</b>	<b>ratio%x10000</b>	<b># seeds/lb mix</b>	<b>(mix % by wt)</b>	<b>lb/ac PLS</b>	<b>Germ %</b>	<b>at P x G %</b>	<b>PLS Weight %</b>
slender wheatgrass	159000	55.0%	0.034591195	66888	0.420681054	6.03	100%	6.03	42
mountain brome	90000	36.0%	0.04	43781	0.486460273	6.97	100%	6.97	49
Canada wildrye	115000	4.0%	0.003478261	4865	0.042300893	0.61	100%	0.61	4
western wheatgrass	110000	4.0%	0.003636364	4865	0.044223661	0.63	100%	0.63	4
bottlebrush squirreltail	192000	1.0%	0.000520833	1216	0.006334118	0.09	100%	0.09	1
	<b>totals</b>	<b>100%</b>	<b>0.082226653</b>	<b>121615</b>	<b>1</b>	<b>14.33</b>		<b>14.33</b>	<b>100</b>

**Recommendations Common to All Areas:**

- Collect and carry out all trash and excess supplies and equipment, from fire lines, staging areas, helispots, safety zones, drop points, spike camps, pump sites, etc.
- Remove all fire-related flagging once it is no longer needed for operations.
- Widely scatter bucked logs and hazard trees in a naturally appearing manner away from fire lines.
- Repair or replace all structures damaged during fire line construction activities (e.g., fences, gates, cattle guards, culverts, etc.).

**Documentation:**

- Provide electronic documentation of accomplishments of fire suppression rehabilitation activities to the respective Agency Administrators for the WMAT and BIA.

CATERER



HOURS: 0500-0900  
1800-2130

AREA CLOSED  
EMERGENCY  
MEDICAL  
AIR-EVAC  
SITE

DUMPSTER

REFRIG

FUEL

HOURS: 0500-0900  
1400-2100

SHOWER UNIT  
HOURS: 0500-1200  
1400-2200

HAND WASH STATION

SUPPLY

HAND WASH STATION

LOSS

E/C/PS

MORNING BRIEFING AREA

COMMS MED

COMMS

PLANS

BRIEFING TENT

COPY TRAILER

CAMPING AREA

CAMPING AREA

Security

ICP ENTRANCE / EXIT

HEAVY EQUIP. PARKING

HWY-12

# TENTATIVE DEMOB LIST

Please get all of your shift tickets signed and emailed to finance. **Including FINAL shift tickets.**

## 6/15/2024

### CREWS

Request Number	Resource Name	Time
C-4	T2IA NAVAJO SCOUTS 1	0700
C-5	T2IA SAFFORD	0730
C-9	IHC BLACK MESA	0800
C-11	IHC GLOBE	0830

### OVERHEAD

Request Number	Resource Name	Time
O-15	Chavez, Greg	0900

## 6/16/2024

### EQUIPMENT

Request Number	Resource Name	Time
O-43	WILDERNESS MEDICS LLC	0700

### CREWS

Request Number	Resource Name	Time
C-10	T2IA TWIN PEAKS	0730



# FINANCE

[2024.bear.finance@firenet.gov](mailto:2024.bear.finance@firenet.gov)

**If you are not able to email Finance directly, please utilize the copy trailer. PLEASE MAKE SURE YOUR NAME & RO# IS ON THE SUBJECT LINE OF ALL EMAILS.**

**Please email finance as soon as you know that you are demobing and send in your final shift ticket as soon as possible. You can forecast your time!** List your contact number and email on your CTR's/ST's so any member of the finance section can contact you.

## **Incident Replacement/Property Loss or Damage:**

### **Federal Personnel/Crews**

For federal personnel/crews seeking replacement of NFES supplies must submit a written request to the Supply Unit for restock. NFES supplies not available through the Supply Unit will be replaced with an [OF-315 Incident Replacement Requisition](#) and shipped to your home unit address.

For federal personnel/crews seeking replacement on non-NFES supplies or equipment, a [OF-289 Property Loss and Damage](#) (PLD) report. PLDs with supporting documents must be emailed to [2024.bear.finance@firenet.gov](mailto:2024.bear.finance@firenet.gov) **and** [amanda.boatright@bia.gov](mailto:amanda.boatright@bia.gov) .

PLDs require additional approvals and will require additional time for review and determination. S #s will be issued for approved PLDs.

### **Cooperators**

Cooperators must follow incident replacement processes of their respective sponsoring agency. Replacement requests may be submitted to the Supply Unit for standard NFES supplies or the Finance Section for non-standard NFES items utilizing appropriate paperwork based on respective cooperator guidance.

ALL Requests should be emailed to [2024.bear.finance@firenet.gov](mailto:2024.bear.finance@firenet.gov) **and** [amanda.boatright@bia.gov](mailto:amanda.boatright@bia.gov) .



# White Mountain Zone Type 3 Check-In Form

**Please use the QR Code to check-in.**

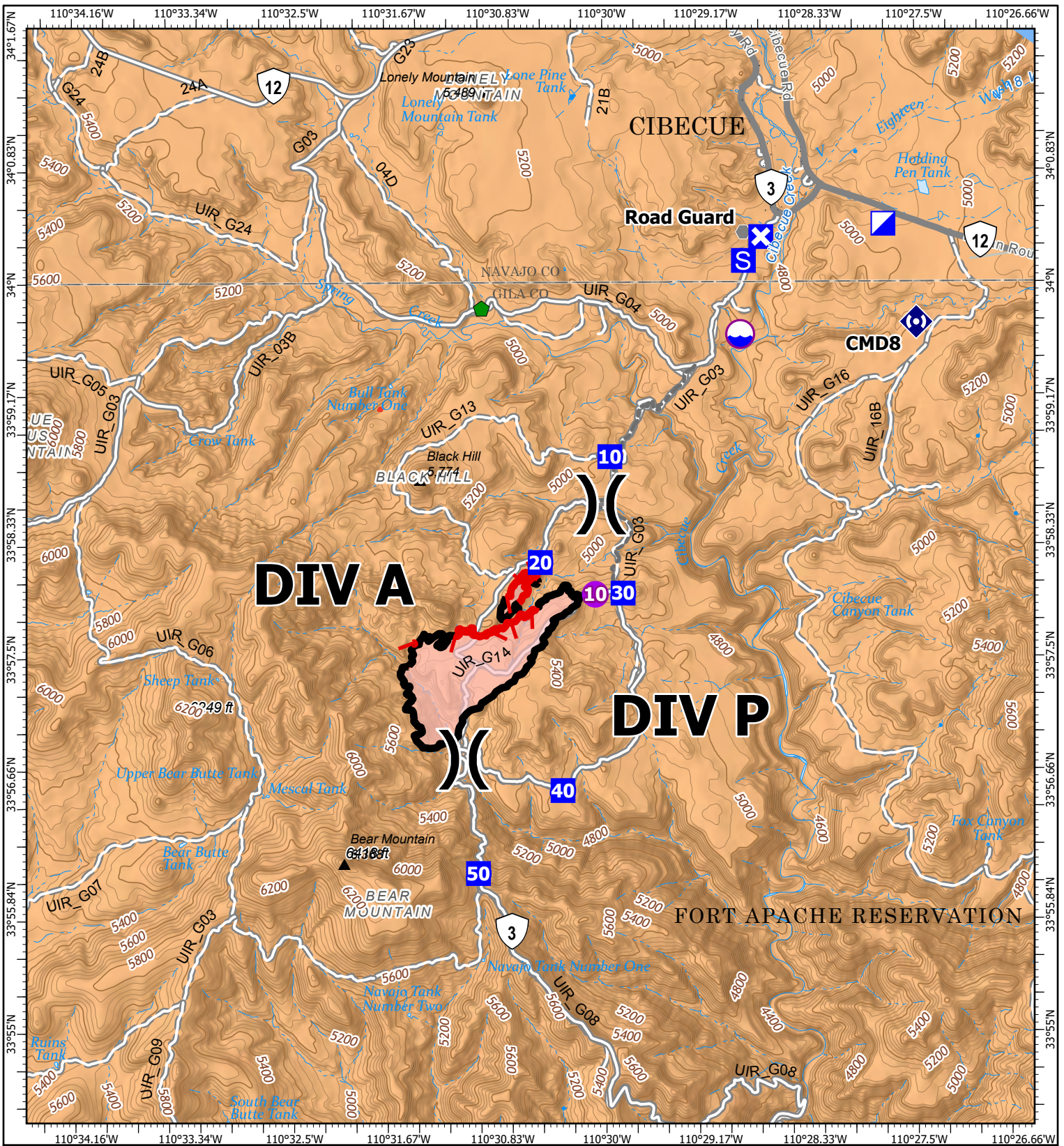
After completion of a check-in form, please email your  
**Resource Order, Red Card, and Crew Manifest** to the status check-in:  
[2024.bear.checkin@firenet.gov](mailto:2024.bear.checkin@firenet.gov)

Please email your financial documents (such as contracts and AD forms) to Finance:  
[2024.bear.finance@firenet.gov](mailto:2024.bear.finance@firenet.gov)  
after you check-in.



[Bear Fire Check-In QR Code](https://forms.office.com/g/287LbNekYg)  
<https://forms.office.com/g/287LbNekYg>

If you need assistance, you can call or text: (801) 247-7876.



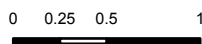
# IAP

Bear

AZ-FTA-000231

06/15/2024

447 acres at 06/11/24 2230

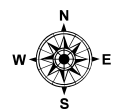


Miles

1:65,000 | WMZ Type 3 IMT | 6/14/2024 1940

North American 1983 Datum, LatLong Grid

Structure	Other	Contained
Helispot	Repair Point	Uncontained
Division Break	Repeater	Secondary Paved
Incident Command Post	Dip Site	County Road (Dirt)
Drop Point	Other	Secondary Dirt
Closure	Temporary Flight Restriction	Unimproved dirt roads
Staging Area	Wildfire Daily Fire Perimeter	



# MEDICAL PLAN (ICS 206 WF)

**FOR A NON-EMERGENCY INCIDENT, WORK THROUGH CHAIN OF COMMAND TO REPORT AND TRANSPORT INJURED PERSONNEL AS NECESSARY.**

**FOR A MEDICAL EMERGENCY: IDENTIFY ON SCENE INCIDENT COMMANDER BY NAME AND POSITION AND ANNOUNCE**

**"MEDICAL EMERGENCY" TO INITIATE RESPONSE FROM IMT COMMUNICATIONS/DISPATCH.**

Use the following items to communicate situation to communications/dispatch.

1. CONTACT COMMUNICATIONS / DISPATCH (**Verify correct frequency prior to starting report**)  
*Ex: "Communications, Div. Alpha. Stand-by for Emergency Traffic."*
2. INCIDENT STATUS: *Provide incident summary (including number of patients) and command structure.*  
*Ex: "Communications, I have a Red priority patient, unconscious, struck by a falling tree. Requesting air ambulance to Forest Road 1 at (Lat./Long.) This will be the Trout Meadow Medical, IC is TFLD Jones. EMT Smith is providing medical care."*

Severity of Emergency / Transport Priority	<input type="checkbox"/> RED / PRIORITY 1 Life or limb threatening injury or illness. Evacuation need is IMMEDIATE <i>Ex: Unconscious, difficulty breathing, bleeding severely, 2° – 3° burns more than 4 palm sizes, heat stroke, disoriented.</i> <input type="checkbox"/> YELLOW / PRIORITY 2 Serious Injury or illness. Evacuation may be DELAYED if necessary. <i>Ex: Significant trauma, unable to walk, 2° – 3° burns not more than 1-3 palm sizes.</i> <input type="checkbox"/> GREEN / PRIORITY 3 Minor Injury or illness. Non-Emergency transport <i>Ex: Sprains, strains, minor heat-related illness.</i>	
Nature of Injury or Illness & Mechanism of Injury		<i>Brief Summary of Injury or Illness (Ex: Unconscious, Struck by Falling Tree)</i>
Transport Request		<i>Air Ambulance / Short Haul/HoistGround Ambulance / Other</i>
Patient Location		<i>Descriptive Location &amp; Lat. / Long. (WGS84)</i>
Incident Name		<i>Geographic Name + "Medical" (Ex: Trout Meadow Medical)</i>
On-Scene Incident Commander		<i>Name of on-scene IC of Incident within an Incident (Ex: TFLD Jones)</i>
Patient Care		<i>Name of Care Provider (Ex: EMT Smith)</i>

3. INITIAL PATIENT ASSESSMENT: *Complete this section for each patient as applicable (start with the most severe patient)*

Patient Assessment: See IRPG page 106

Treatment:

4. TRANSPORT PLAN:

Evacuation Location (*if different*): (*Descriptive Location (drop point, intersection, etc.) or Lat. / Long.*) Patient's ETA to Evacuation Location:

Helispot / Extraction Site Size and Hazards:

5. ADDITIONAL RESOURCES / EQUIPMENT NEEDS:

*Example: Paramedic/EMT, Crews, Immobilization Devices, AED, Oxygen, Trauma Bag, IV/Fluid(s), Splints, Rope rescue, Wheeled litter, HAZMAT, Extraction*

6. COMMUNICATIONS: Identify State Air/Ground EMS Frequencies and Hospital Contacts as applicable

Function	Channel Name/Number	Receive (RX)	Tone/NAC *	Transmit (TX)	Tone/NAC *
COMMAND					
AIR-TO-GRND					
TACTICAL					

7. CONTINGENCY: **Considerations:** *If primary options fail, what actions can be implemented in conjunction with primary evacuation method? Be thinking ahead.*

8. ADDITIONAL INFORMATION: *Updates/Changes, etc.*

**REMEMBER: Confirm ETA's of resources ordered. Act according to your level of training. Be Alert. Keep Calm. Think Clearly. Act Decisively.**

### ACTIVITY LOG (ICS 214)

<b>1. Incident Name:</b>		<b>2. Operational Period:</b> Date From: _____ Date To: _____ Time From: _____ Time To: _____		
<b>3. Name:</b>		<b>4. ICS Position:</b>		<b>5. Home Agency (and Unit):</b>
<b>6. Resources Assigned:</b>				
Name	ICS Position	Home Agency (and Unit)		
<b>7. Activity Log:</b>				
Date/Time	Notable Activities			
<b>8. Prepared by:</b> Name: _____ Position/Title: _____ Signature: _____				
ICS 214, Page 1		Date/Time: _____		