

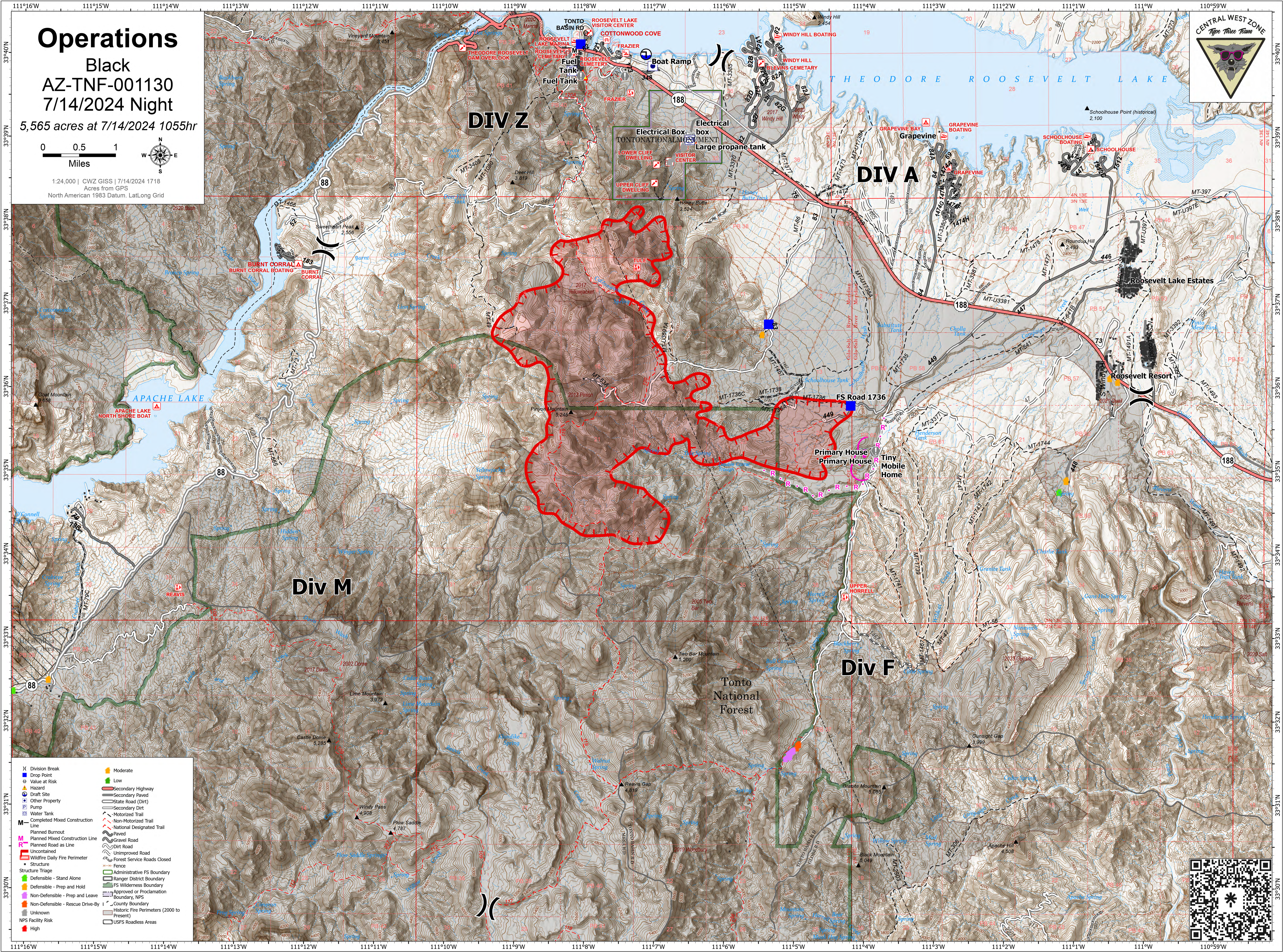
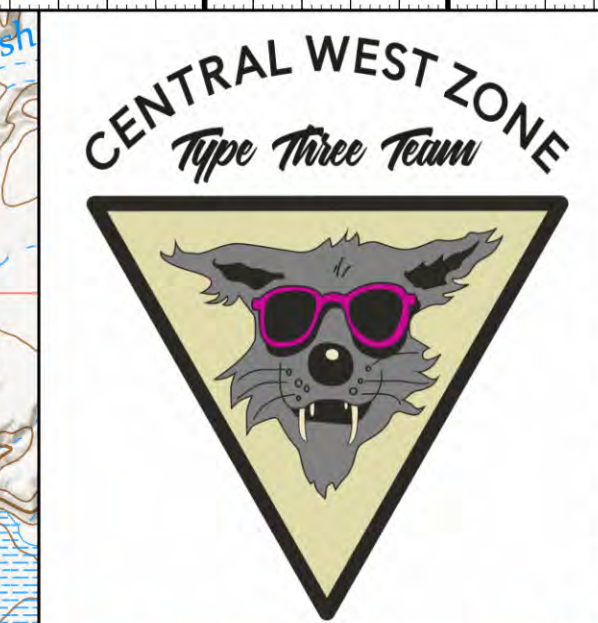
# Operations

Black  
AZ-TNF-001130  
7/14/2024 Night

5,565 acres at 7/14/2024 1055hr



1:24,000 | CWZ GISS | 7/14/2024 1718  
Acres from GPS  
North American 1983 Datum, Lat/Long Grid



- X Division Break
- Drop Point
- Value at Risk
- Draft Site
- Other Property
- Pump
- Water Tank
- M Completed Mixed Construction Line
- M Planned Burnout
- M Planned Mixed Construction Line
- M Planned Road as Line
- Uncontained
- Wildfire Daily Fire Perimeter
- Structure
- Structure Triage
- Defensible - Stand Alone
- Defensible - Prep and Hold
- Non-Defensible - Prep and Leave
- Non-Defensible - Rescue Drive-By
- Unknown
- NPS Facility Risk
- High
- Moderate
- Low
- Secondary Highway
- Secondary Road
- State Road (Dirt)
- Secondary Dirt
- Motorized Trail
- Non-Motorized Trail
- National Designated Trail
- Paved
- Gravel Road
- Dirt Road
- Unimproved Road
- Forest Service Roads Closed
- Fence
- Administrative FS Boundary
- Ranger District Boundary
- FS Wilderness Boundary
- Approved or Proclamation Boundary, NPS
- County Boundary
- Historic Fire Perimeters (2000 to Present)
- USFS Roadless Areas

