

IAP

Black
AZ-TNF-001130
7/15/2024 Day

5,982 acres at 7/14/2024 1645hr

(X) Division Break

Uncontained

Wildfire Daily Fire Perimeter

Secondary Highway

Secondary Paved

State Road (Dirt)

Secondary Dirt

Motorized Trail

Non-Motorized Trail

National Designated Trail

Paved

Gravel Road

Dirt Road

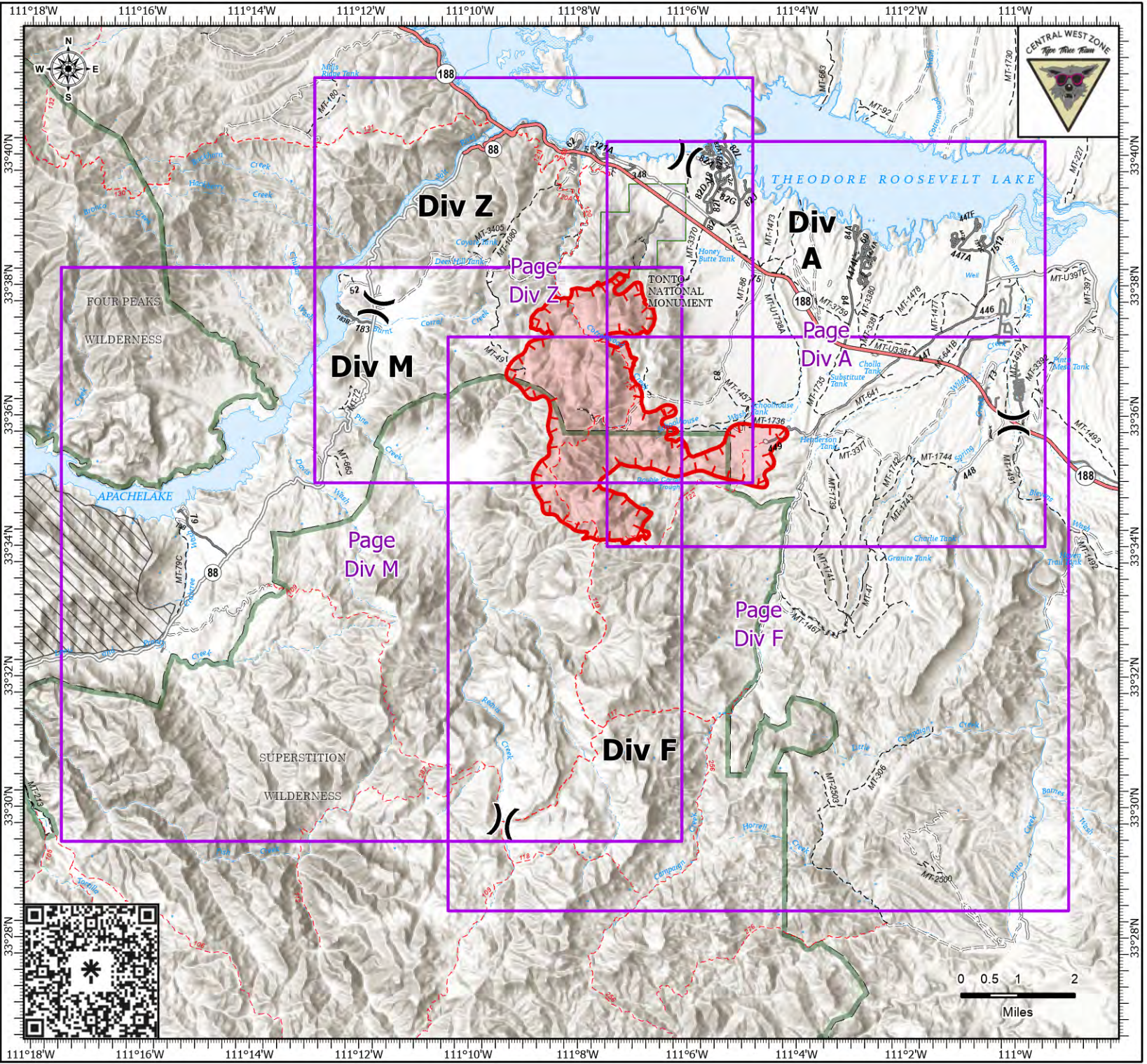
Unimproved Road

Administrative FS Boundary

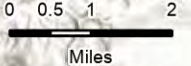
FS Wilderness Boundary

NPS Unit Boundary

USFS Roadless Areas



1:150,000 | CWZ GISS | 7/14/2024 2141
Acres from GPS
North American 1983 Datum. LatLong Grid



IAP

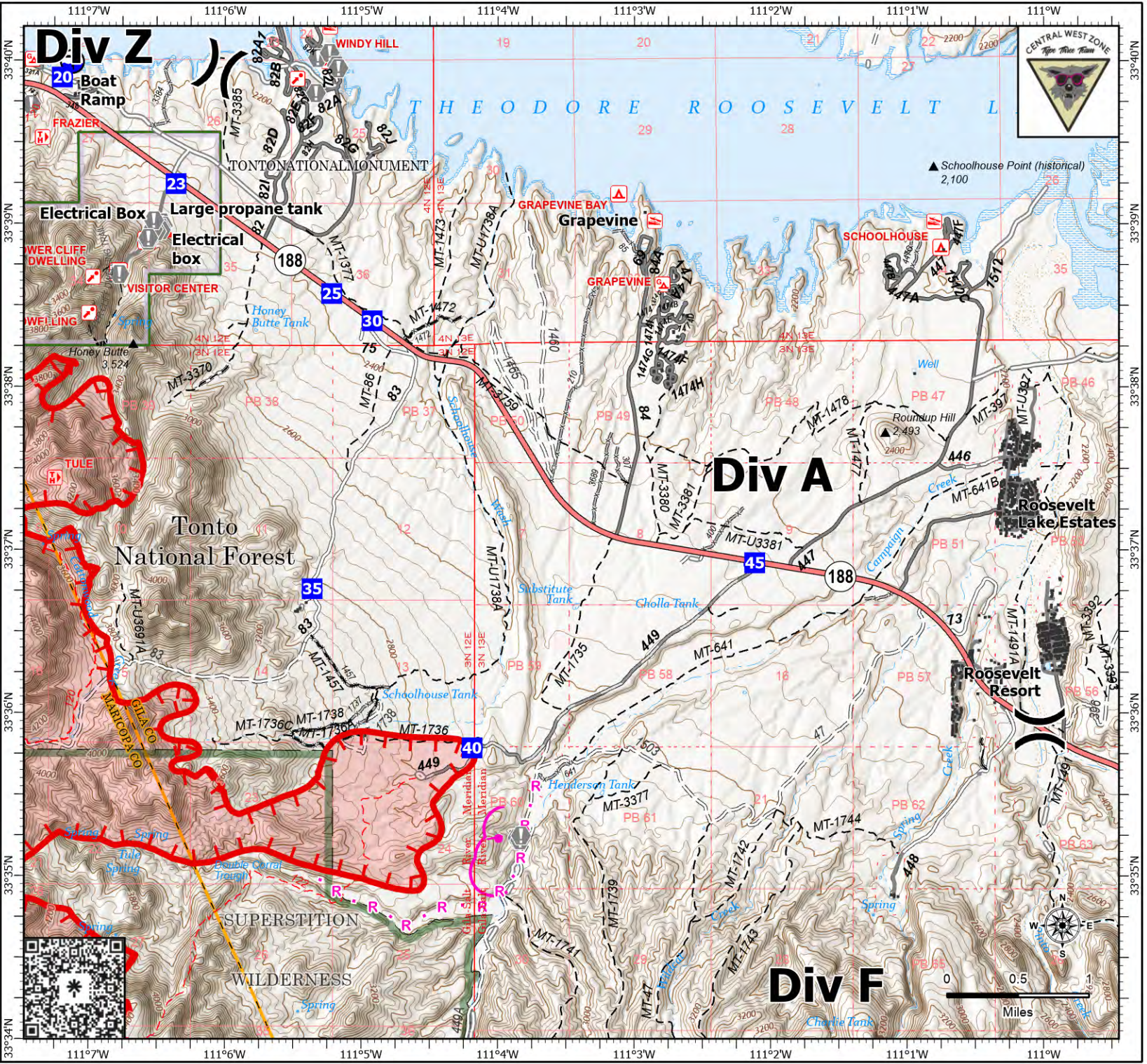
Div A

Black

AZ-TNF-001130
7/15/2024 Day

5,982 acres at 7/14/2024 1645hr

- () Division Break
- Drop Point
- ⊙ Value at Risk
- ⚠ Hazard
- 📍 Draft Site
- Planned Burnout
- ➡ Planned Road as Line
- ▭ Uncontained
- ▭ Wildfire Daily Fire Perimeter
- Structure
- Secondary Highway
- Secondary Paved
- Secondary Dirt
- Motorized Trail
- Non-Motorized Trail
- National Designated Trail
- Trail
- Paved
- Gravel Road
- Dirt Road
- Unimproved Road
- Forest Service Roads Closed
- ▭ Administrative FS Boundary
- ▭ Ranger District Boundary
- ▭ FS Wilderness Boundary
- ▭ NPS Unit Boundary
- ▭ County Boundary



IAP

Div F

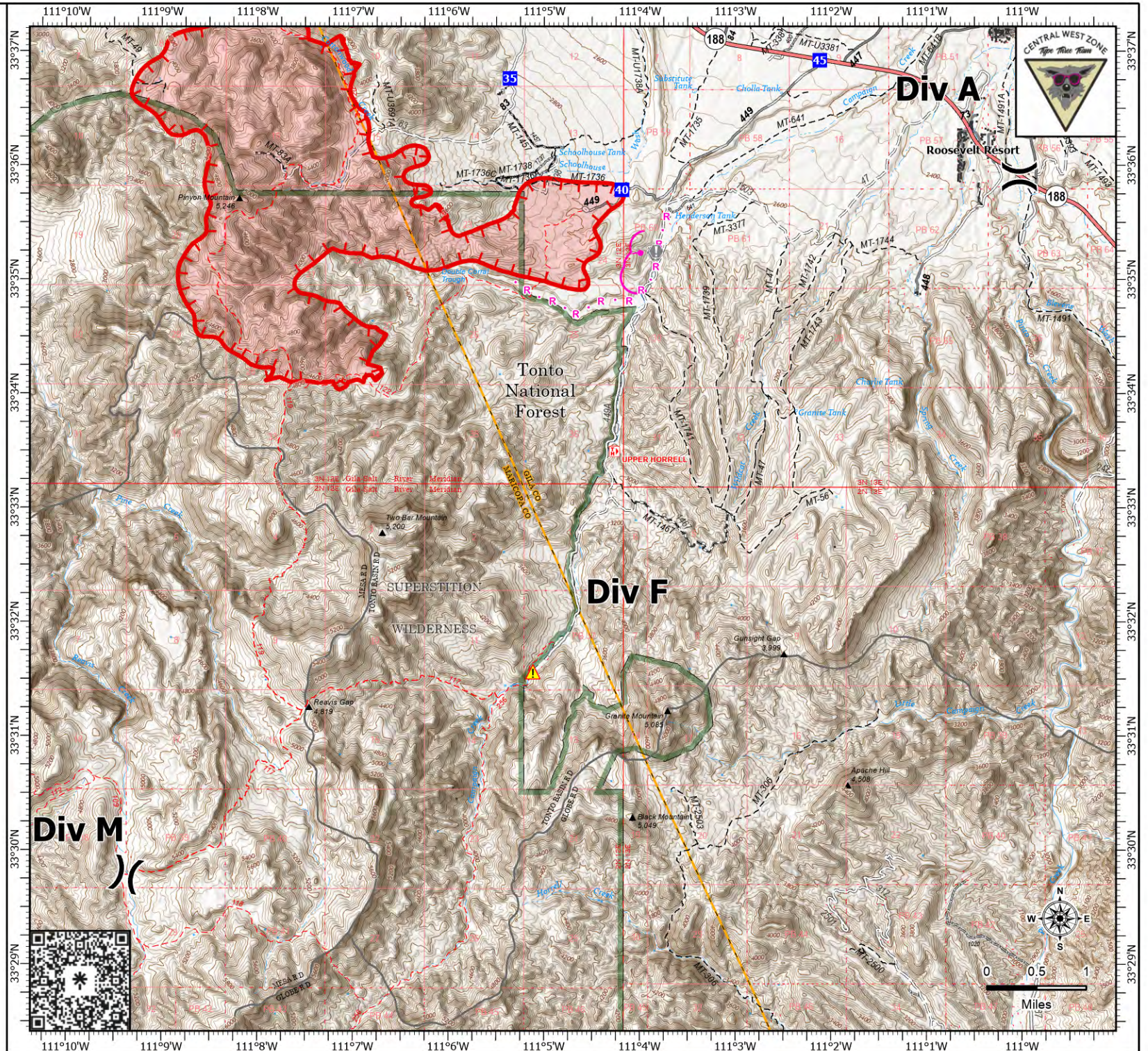
Black

AZ-TNF-001130

7/15/2024 Day

5,982 acres at 7/14/2024 1645hr

- (X) Division Break
- Drop Point
- ⚠ Value at Risk
- ⚠ Hazard
- Planned Burnout
- R · Planned Road as Line
- Uncontained
- Wildfire Daily Fire Perimeter
- Structure
- Secondary Highway
- - - Motorized Trail
- - - Non-Motorized Trail
- - - National Designated Trail
- Paved
- Gravel Road
- Dirt Road
- Unimproved Road
- Forest Service Roads Closed
- Administrative FS Boundary
- Ranger District Boundary
- FS Wilderness Boundary
- County Boundary



IAP

Div M

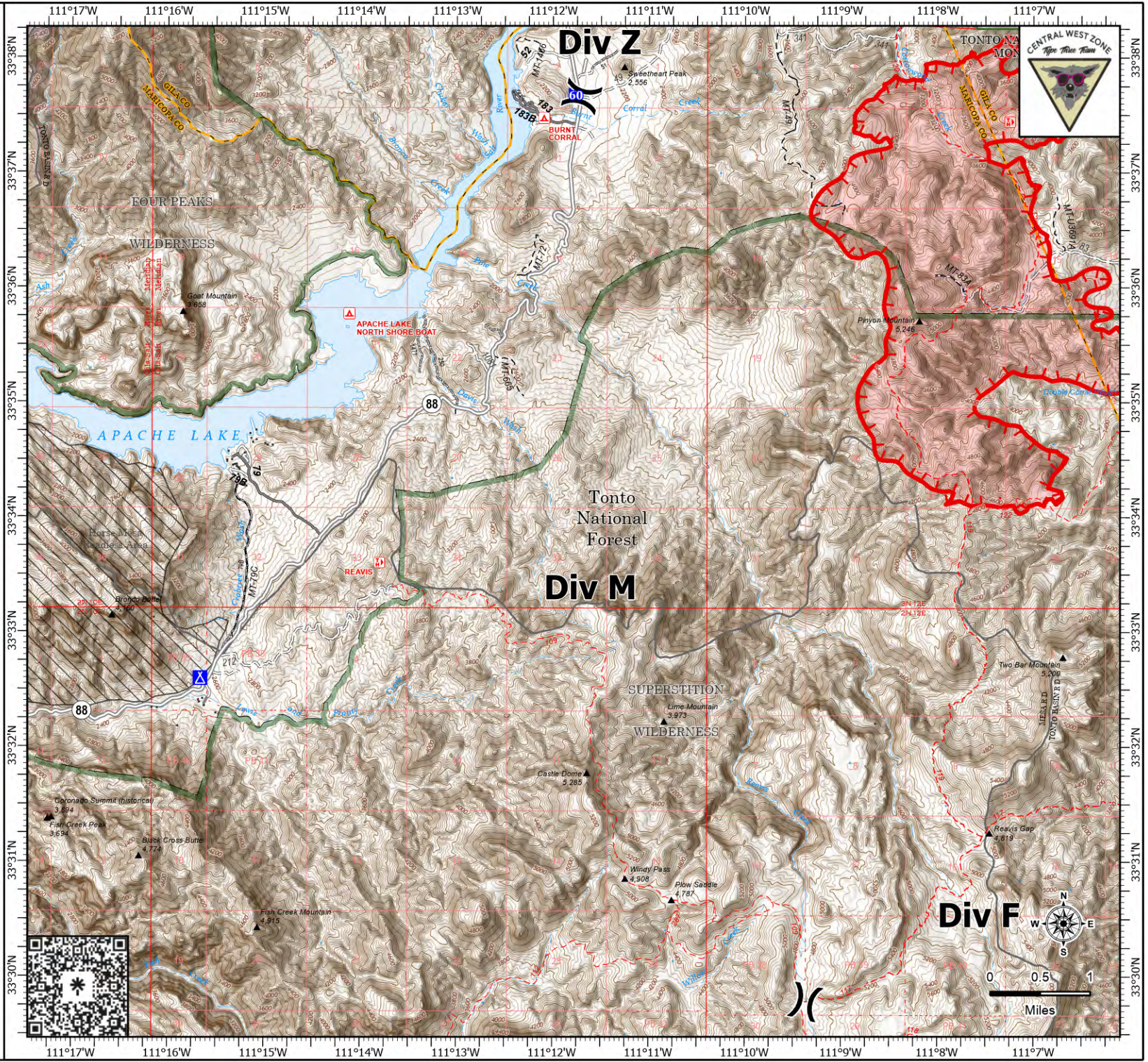
Black

AZ-TNF-001130

7/15/2024 Day

5,982 acres at 7/14/2024 1645hr

- (X) Division Break
- Drop Point
- ▲ Camp
- ┌ Uncontained
- ▭ Wildfire Daily Fire Perimeter
- Structure
- State Road (Dirt)
- - - Motorized Trail
- - - Non-Motorized Trail
- - - National Designated Trail
- - - Trail
- ~ Paved
- ~ Dirt Road
- ~ Unimproved Road
- ~ Forest Service Roads Closed
- ▭ Administrative FS Boundary
- ▭ Ranger District Boundary
- ▭ FS Wilderness Boundary
- ▭ NPS Unit Boundary
- ▭ County Boundary
- ▭ USFS Roadless Areas



IAP

Div Z

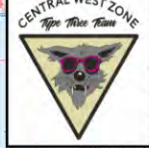
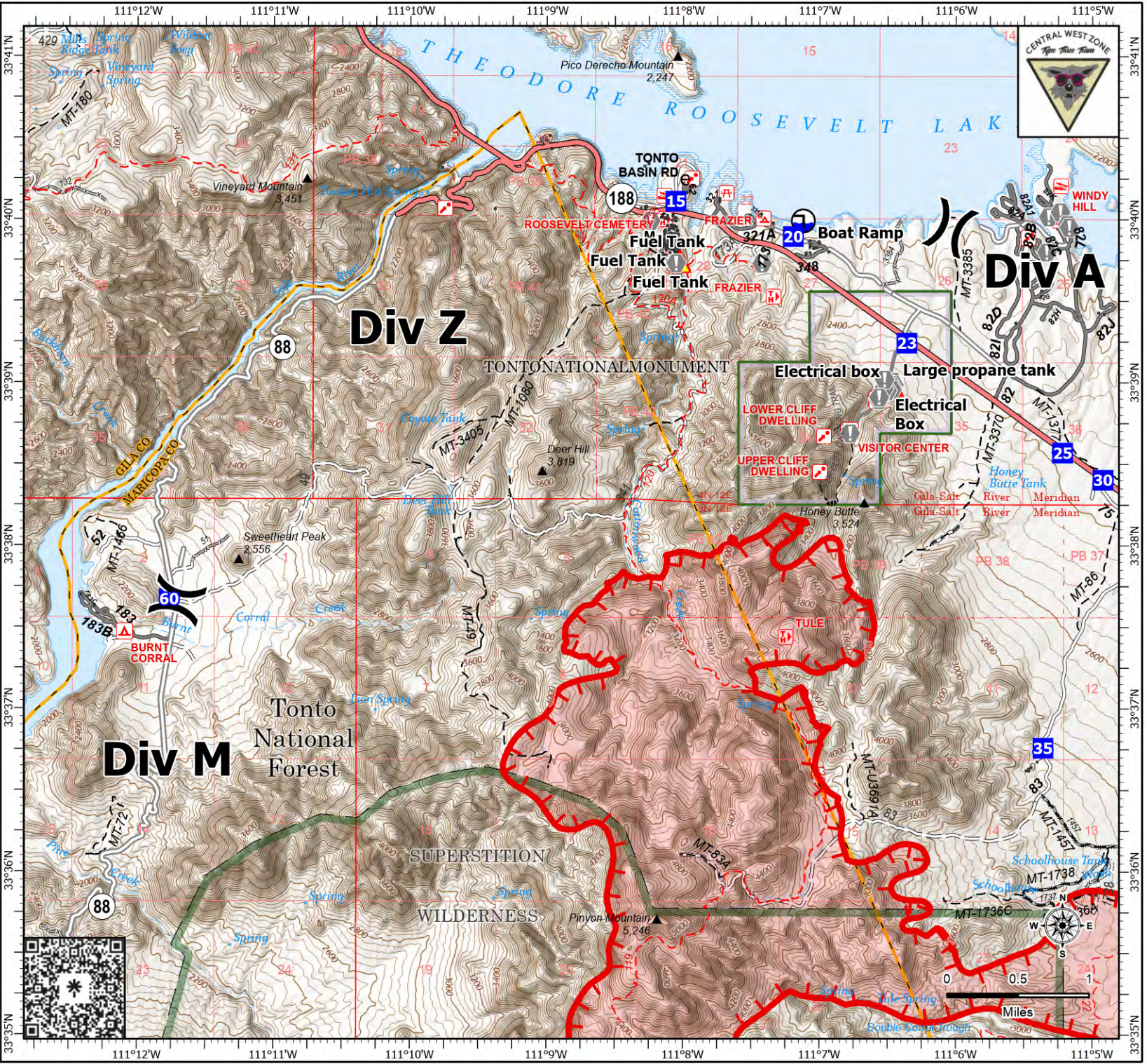
Black

AZ-TNF-001130

7/15/2024 Day

5,982 acres at 7/14/2024 1645hr

- (X) Division Break
- Drop Point
- Value at Risk
- ⚠ Hazard
- Ⓜ Draft Site
- M Completed Mixed Construction Line
- M Planned Mixed Construction Line
- R Planned Road as Line
- ▭ Uncontained
- ▭ Wildfire Daily Fire Perimeter
- Structure
- ▬ Secondary Highway
- ▬ Secondary Paved
- ▬ State Road (Dirt)
- ▬ Secondary Dirt
- ▬ Motorized Trail
- ▬ Non-Motorized Trail
- ▬ National Designated Trail
- ▬ Trail
- ▬ Paved
- ▬ Gravel Road
- ▬ Dirt Road
- ▬ Unimproved Road
- ▬ Forest Service Roads Closed
- ▭ Administrative FS Boundary
- ▭ Ranger District Boundary
- ▭ FS Wilderness Boundary
- ▭ NPS Unit Boundary
- ▭ County Boundary



1:60,000 | CWZ GISS | 7/14/2024 2143
Acres from GPS
North American 1983 Datum. Lat/Long Grid

