

IAP


Black
AZ-TNF-001130
7/15/2024 Night


8,679 acres at 7/15/2024 0949hr

(X) Division Break


 Uncontained

 Wildfire Daily Fire Perimeter


 Secondary Highway

 Secondary Paved


 State Road (Dirt)


 Secondary Dirt

 Motorized Trail

 Non-Motorized Trail

 National Designated Trail


 Paved


 Gravel Road

 Dirt Road

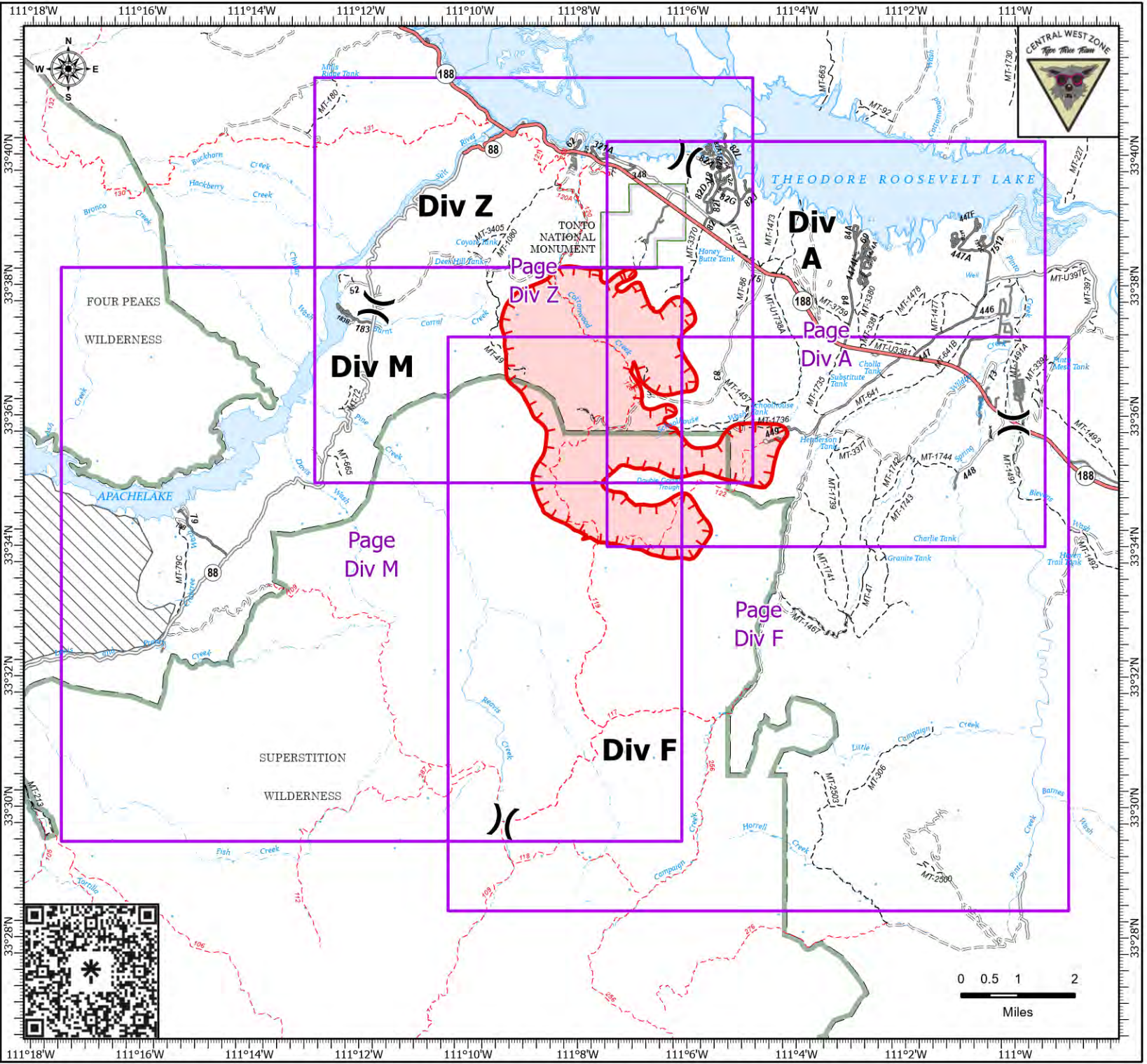
 Unimproved Road

 Administrative FS Boundary

 FS Wilderness Boundary

 NPS Unit Boundary

 USFS Roadless Areas



IAP

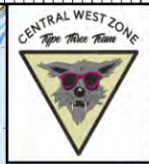
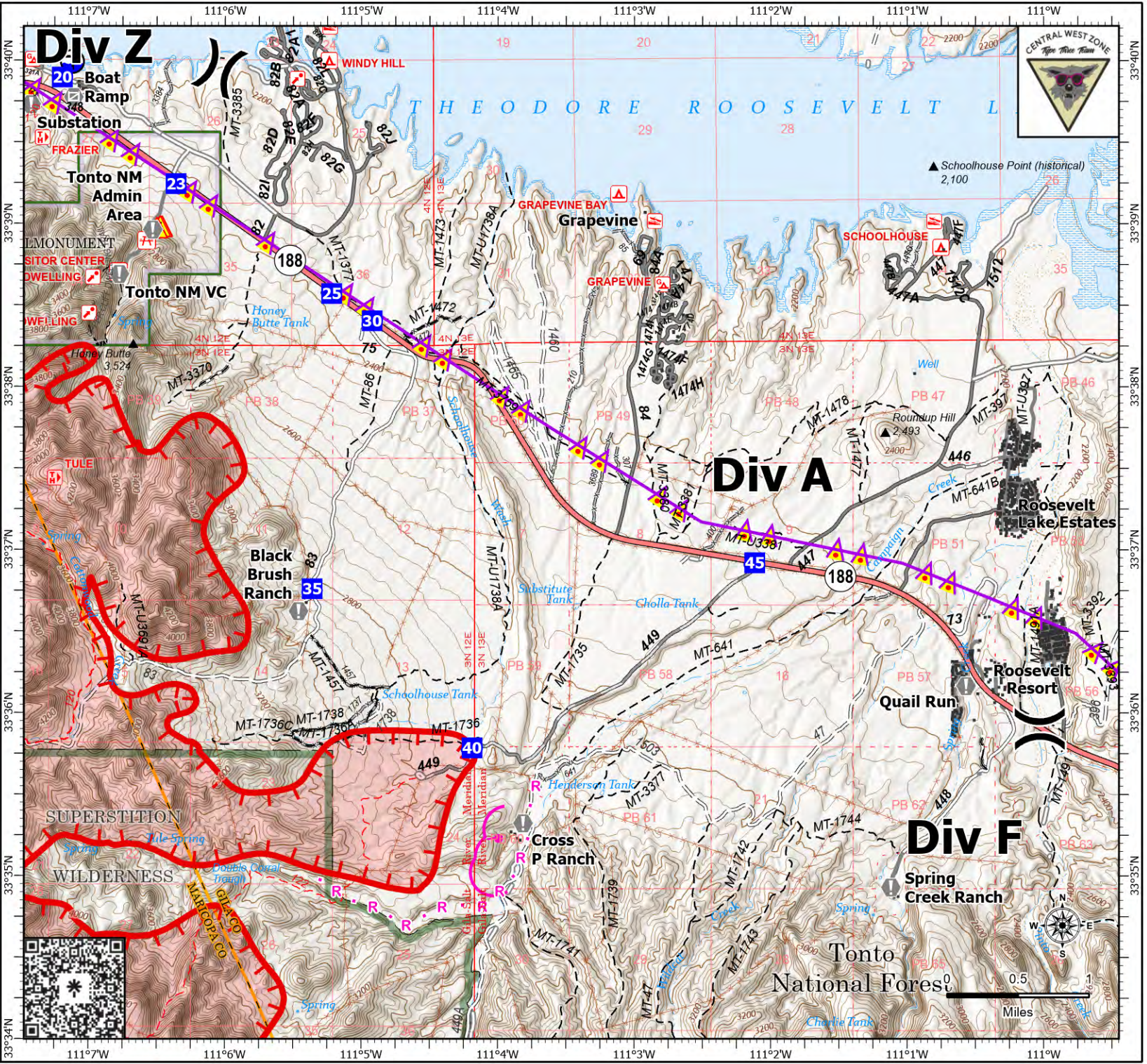
Div A

Black

AZ-TNF-001130
7/15/2024 Night

8,679 acres at 7/15/2024 0949hr

- (X) Division Break
- Drop Point
- Value at Risk
- ⊙ Gate
- ⚠ Hazard
- 📍 Draft Site
- Planned Burnout
- Planned Road as Line
- Aerial Hazard
- Uncontained
- Wildfire Daily Fire Perimeter
- Structure
- Secondary Highway
- Secondary Paved
- Secondary Dirt
- Motorized Trail
- Non-Motorized Trail
- National Designated Trail
- Trail
- Paved
- Gravel Road
- Dirt Road
- Unimproved Road
- Forest Service Roads Closed
- Fence
- Administrative FS Boundary
- Ranger District Boundary
- FS Wilderness Boundary
- NPS Unit Boundary
- County Boundary



IAP

Div F

Black

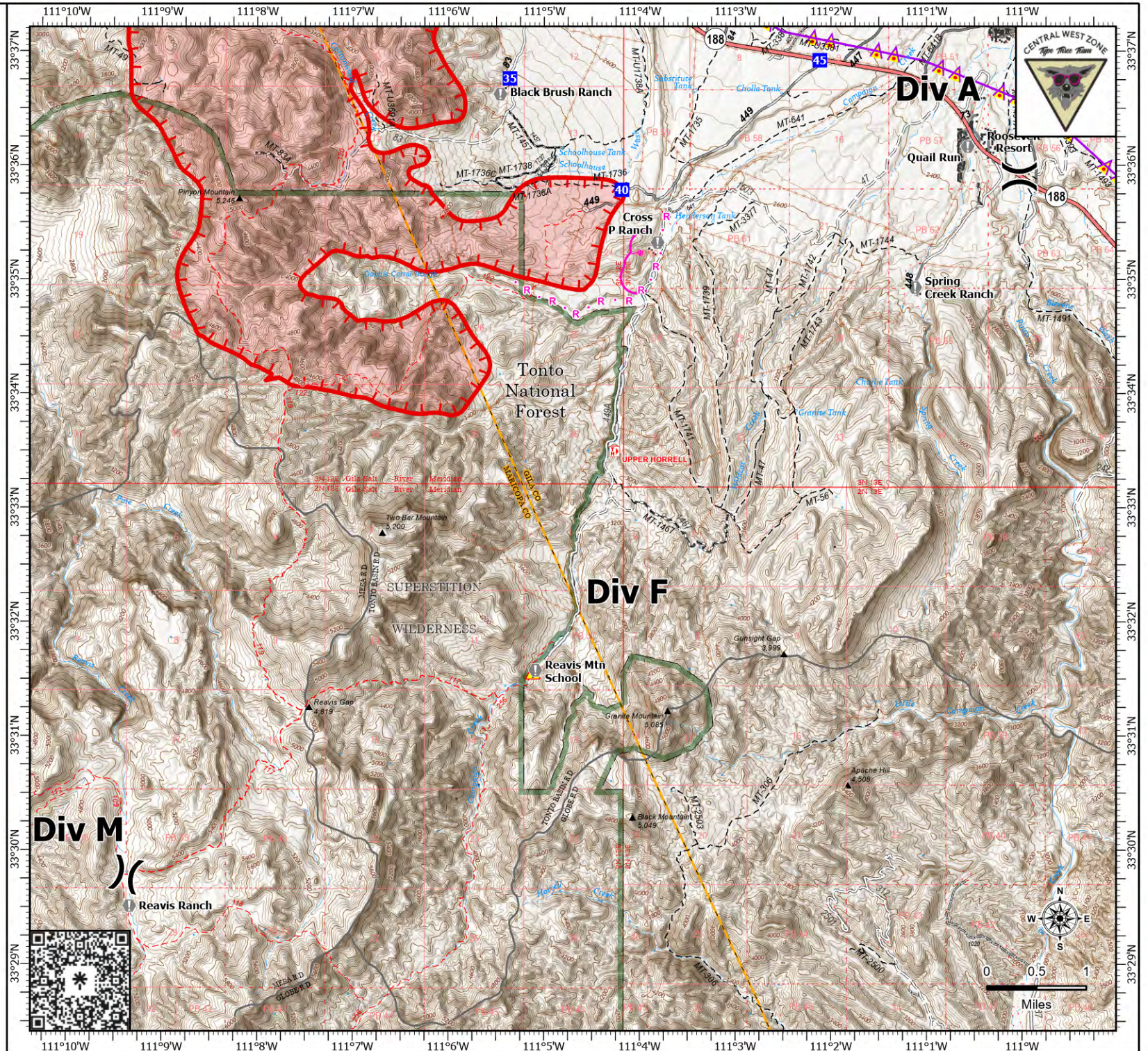
AZ-TNF-001130

7/15/2024 Night

8,679 acres at 7/15/2024 0949hr

- (X) Division Break
- Drop Point
- ⦿ Value at Risk
- ⚠ Hazard
- Planned Burnout
- R · — Planned Road as Line
- Aerial Hazard
- Uncontained
- Wildfire Daily Fire Perimeter
- Structure
- Secondary Highway
- - - Motorized Trail
- - - Non-Motorized Trail
- - - National Designated Trail
- Paved
- Gravel Road
- Dirt Road
- Unimproved Road
- Forest Service Roads Closed
- Fence
- Administrative FS Boundary
- Ranger District Boundary
- FS Wilderness Boundary
- County Boundary

1:85,000 | CWZ GISS | 7/15/2024 1505
Acres from GPS
North American 1983 Datum, Lat/Long Grid



Div M

Div F

Div A

IAP

Div M

Black

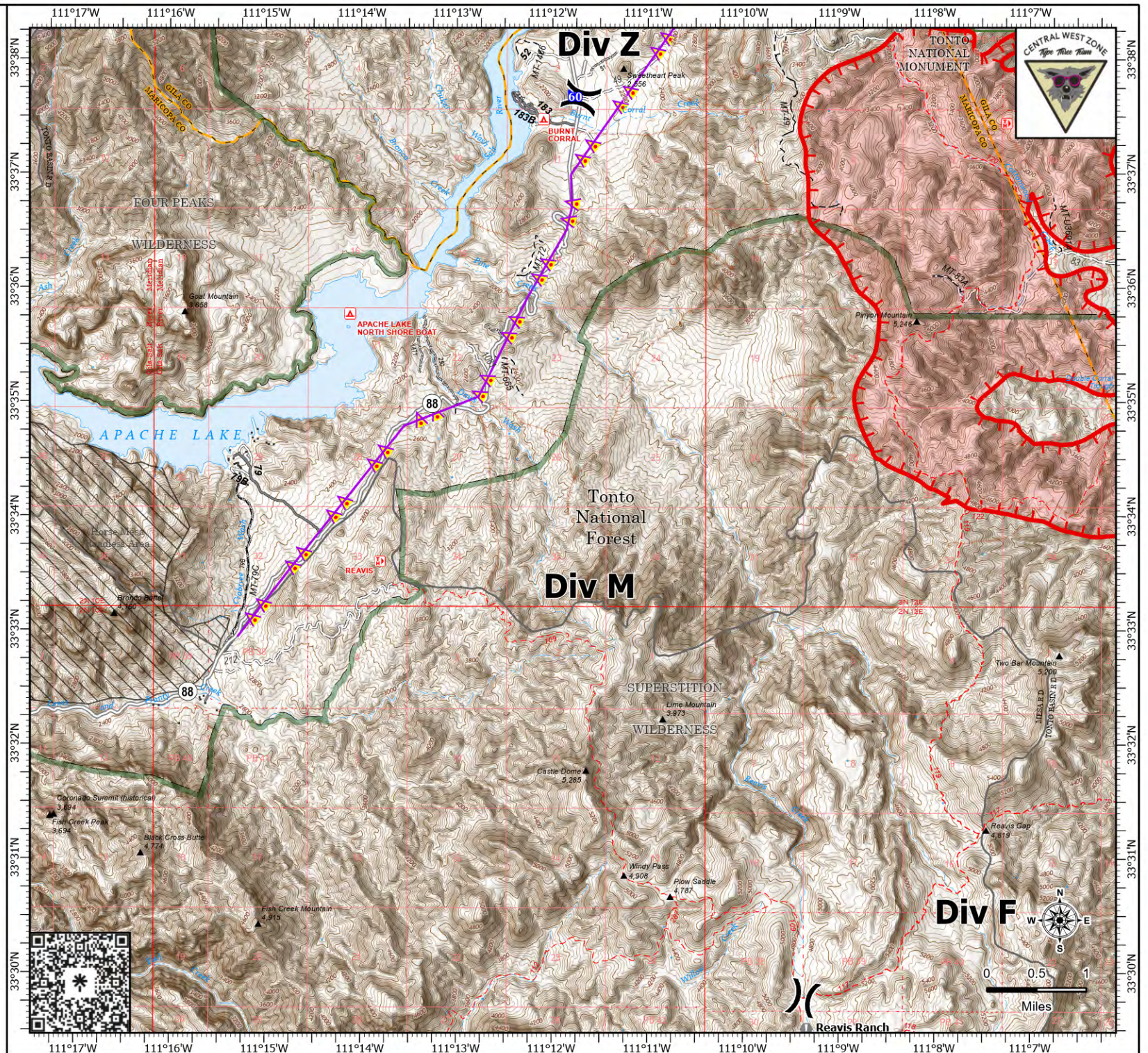
AZ-TNF-001130

7/15/2024 Night

8,679 acres at 7/15/2024 0949hr

- (X) Division Break
- Drop Point
- ⚠ Value at Risk
- Aerial Hazard
- ⌚ Uncontained
- ▭ Wildfire Daily Fire Perimeter
- Structure
- State Road (Dirt)
- - - Motorized Trail
- · - Non-Motorized Trail
- · - National Designated Trail
- · - Trail
- Paved
- Dirt Road
- Unimproved Road
- Forest Service Roads Closed
- Fence
- ▭ Administrative FS Boundary
- ▭ Ranger District Boundary
- ▭ FS Wilderness Boundary
- ▭ NPS Unit Boundary
- ▭ County Boundary
- ▭ USFS Roadless Areas

1:85,000 | CWZ GISS | 7/15/2024 1505
Acres from GPS
North American 1983 Datum. Lat/Long Grid



IAP

Div Z

Black

AZ-TNF-001130

7/15/2024 Night

8,679 acres at 7/15/2024 0949hr

- Helispot
-) Division Break
- Drop Point
- ⊕ Value at Risk
- ⊕ Gate
- ◆ Internet Access
- ▲ Hazard
- ⊕ Draft Site
- M Completed Mixed Construction Line
- M Planned Mixed Construction Line
- R Planned Road as Line
- Aerial Hazard
- Uncontained
- Wildfire Daily Fire Perimeter
- Structure
- Secondary Highway
- Secondary Paved
- State Road (Dirt)
- Secondary Dirt
- Motorized Trail
- Non-Motorized Trail
- National Designated Trail
- Trail
- Paved
- Gravel Road
- Dirt Road
- Unimproved Road
- Forest Service Roads Closed
- Fence
- Administrative FS Boundary
- Ranger District Boundary
- FS Wilderness Boundary
- NPS Unit Boundary
- County Boundary

1:60,000 | CWZ GISS | 7/15/2024 1506
Acres from GPS
North American 1983 Datum. Lat/Long Grid

