

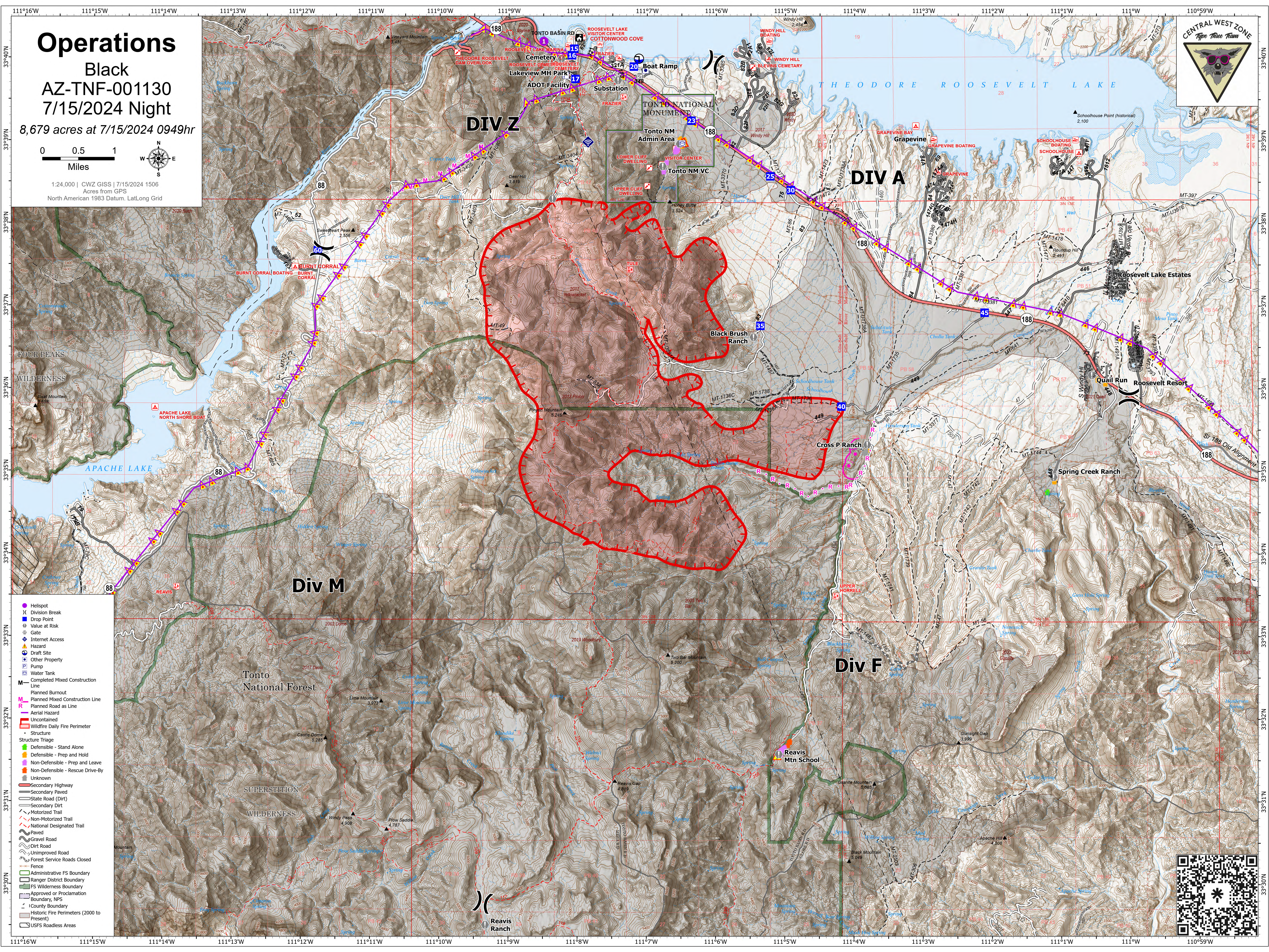
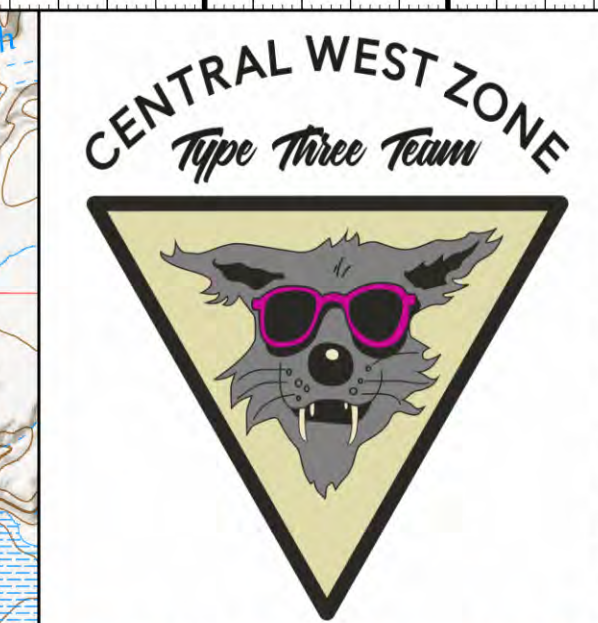
Operations

Black
AZ-TNF-001130
7/15/2024 Night

8,679 acres at 7/15/2024 0949hr



1:24,000 | CWZ GISS | 7/15/2024 1506
Acres from GPS
North American 1983 Datum, Lat/Long Grid



- Helispot
- ⌘ Division Break
- Drop Point
- ⊙ Value at Risk
- ⊙ Gate
- ⊙ Internet Access
- ⚠ Hazard
- ⚙ Draft Site
- ⊙ Other Property
- ⊙ Pump
- ⊙ Water Tank
- M Completed Mixed Construction Line
- Planned Burnout
- M Planned Mixed Construction Line
- R Planned Road as Line
- Aerial Hazard
- Uncontained
- Wildfire Daily Fire Perimeter
- Structure
- Structure Triage
 - Defensible - Stand Alone
 - Defensible - Prep and Hold
 - Non-Defensible - Prep and Leave
 - Non-Defensible - Rescue Drive-By
 - Unknown
- Secondary Highway
- Secondary Paved
- State Road (Dirt)
- Secondary Dirt
- Motorized Trail
- Non-Motorized Trail
- National Designated Trail
- Paved
- Gravel Road
- Dirt Road
- Unimproved Road
- Forest Service Roads Closed
- Fence
- Administrative FS Boundary
- Ranger District Boundary
- FS Wilderness Boundary
- Approved or Proclamation Boundary, NPS
- County Boundary
- Historic Fire Perimeters (2000 to Present)
- USFS Roadless Areas

