

# IAP


Black  
AZ-TNF-001130  
7/16/2024 Day


8,895 acres at 7/15/2024 1530hr

(X) Division Break


 Uncontained

 Wildfire Daily Fire  
Perimeter

 Secondary Highway

 Secondary Paved


 State Road (Dirt)


 Secondary Dirt

 Motorized Trail

 Non-Motorized Trail

 National Designated Trail


 Paved


 Gravel Road

 Dirt Road

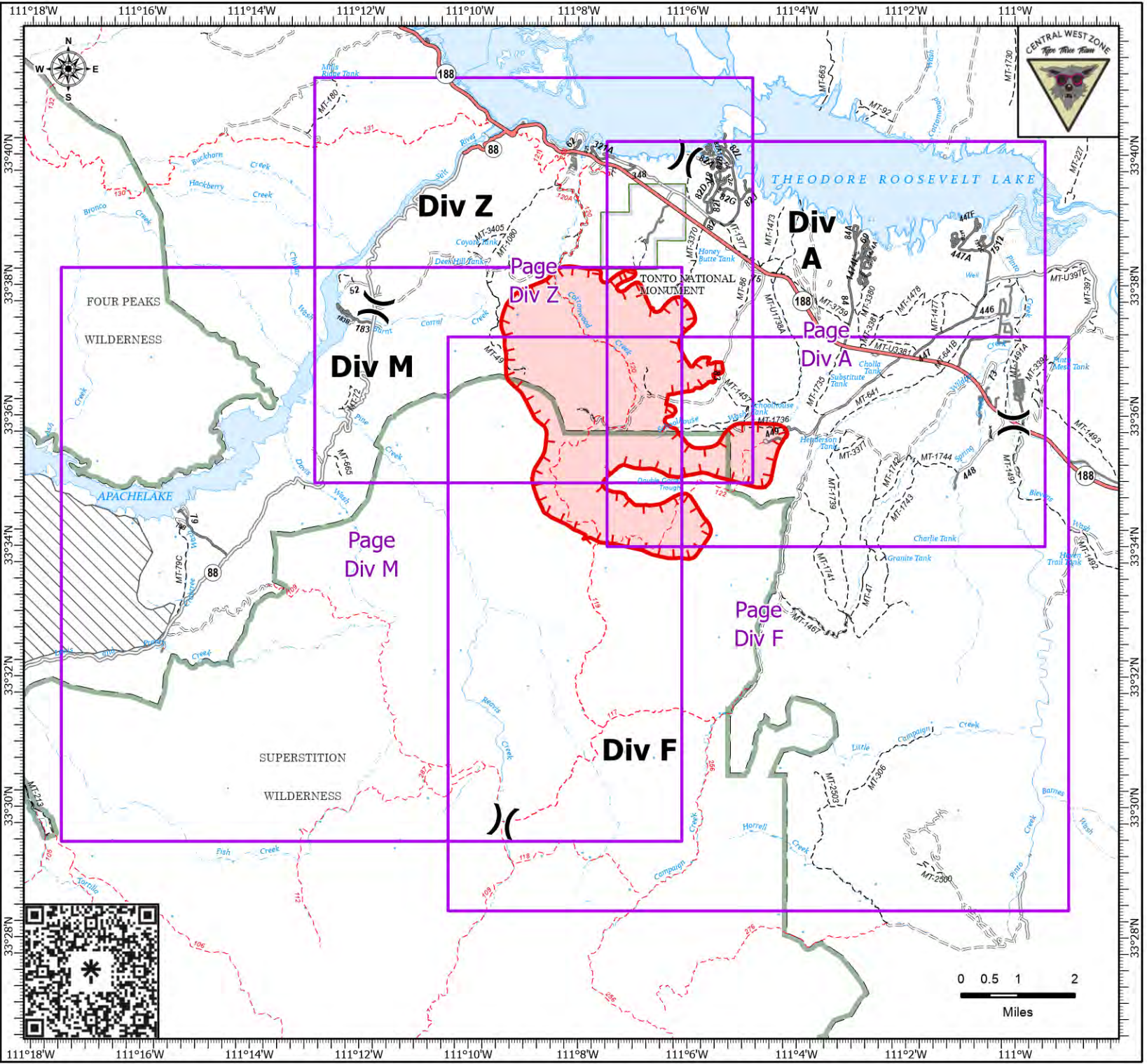
 Unimproved Road

 Administrative FS  
Boundary

 FS Wilderness Boundary

 NPS Unit Boundary

 USFS Roadless Areas



# IAP

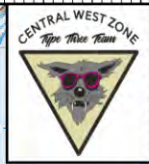
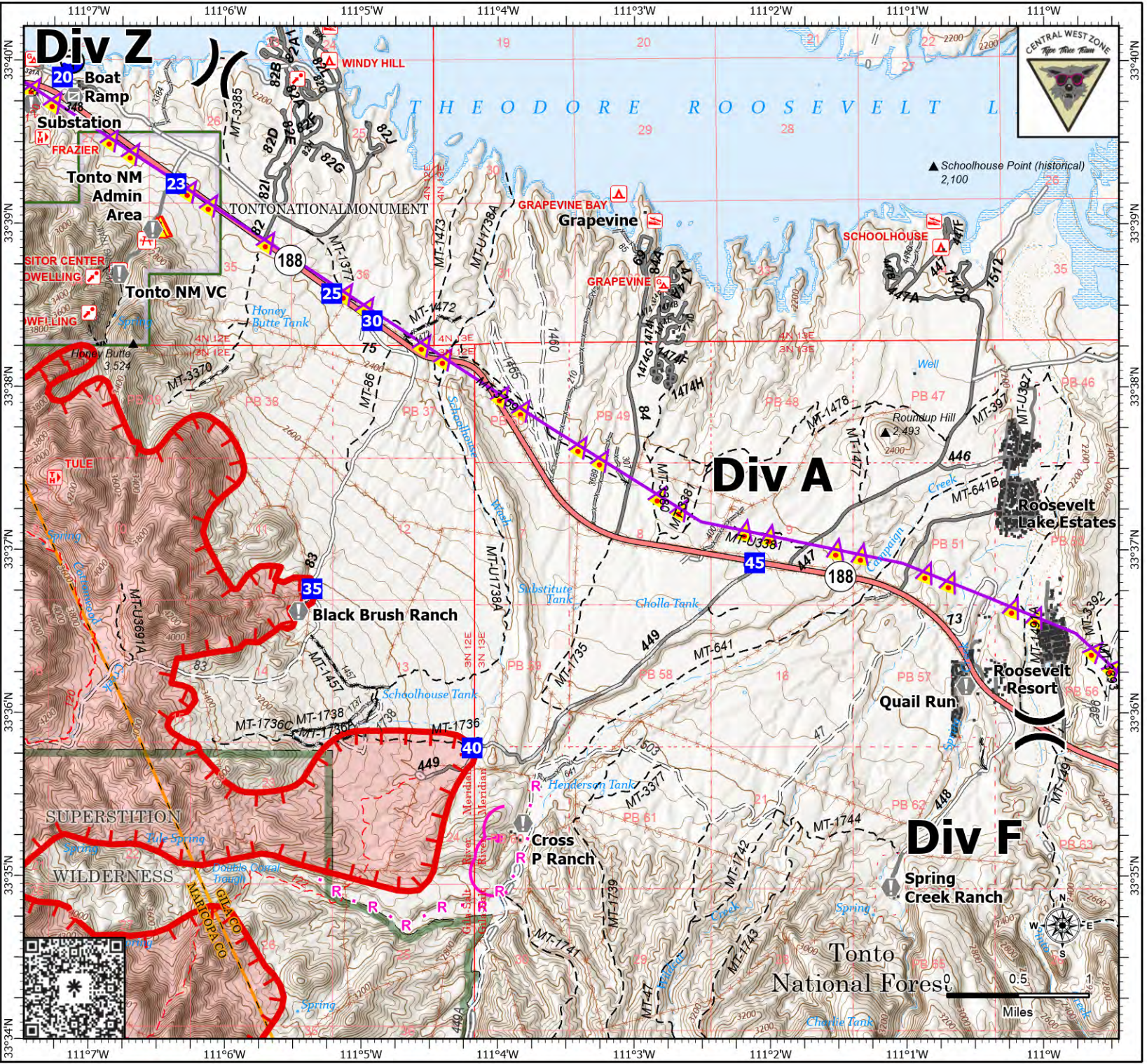
## Div A

### Black

AZ-TNF-001130  
7/16/2024 Day

8,895 acres at 7/15/2024 1530hr

- (X) Division Break
- Drop Point
- Value at Risk
- ⊙ Gate
- ⚠ Hazard
- 📍 Draft Site
- Planned Burnout
- Planned Road as Line
- Aerial Hazard
- Uncontained
- Wildfire Daily Fire Perimeter
- Structure
- Secondary Highway
- Secondary Paved
- Secondary Dirt
- - - Motorized Trail
- - - Non-Motorized Trail
- - - National Designated Trail
- - - Trail
- Paved
- Gravel Road
- Dirt Road
- Unimproved Road
- Forest Service Roads Closed
- Fence
- Administrative FS Boundary
- Ranger District Boundary
- FS Wilderness Boundary
- NPS Unit Boundary
- County Boundary



# IAP

## Div F

### Black

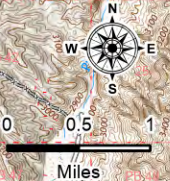
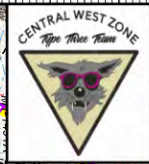
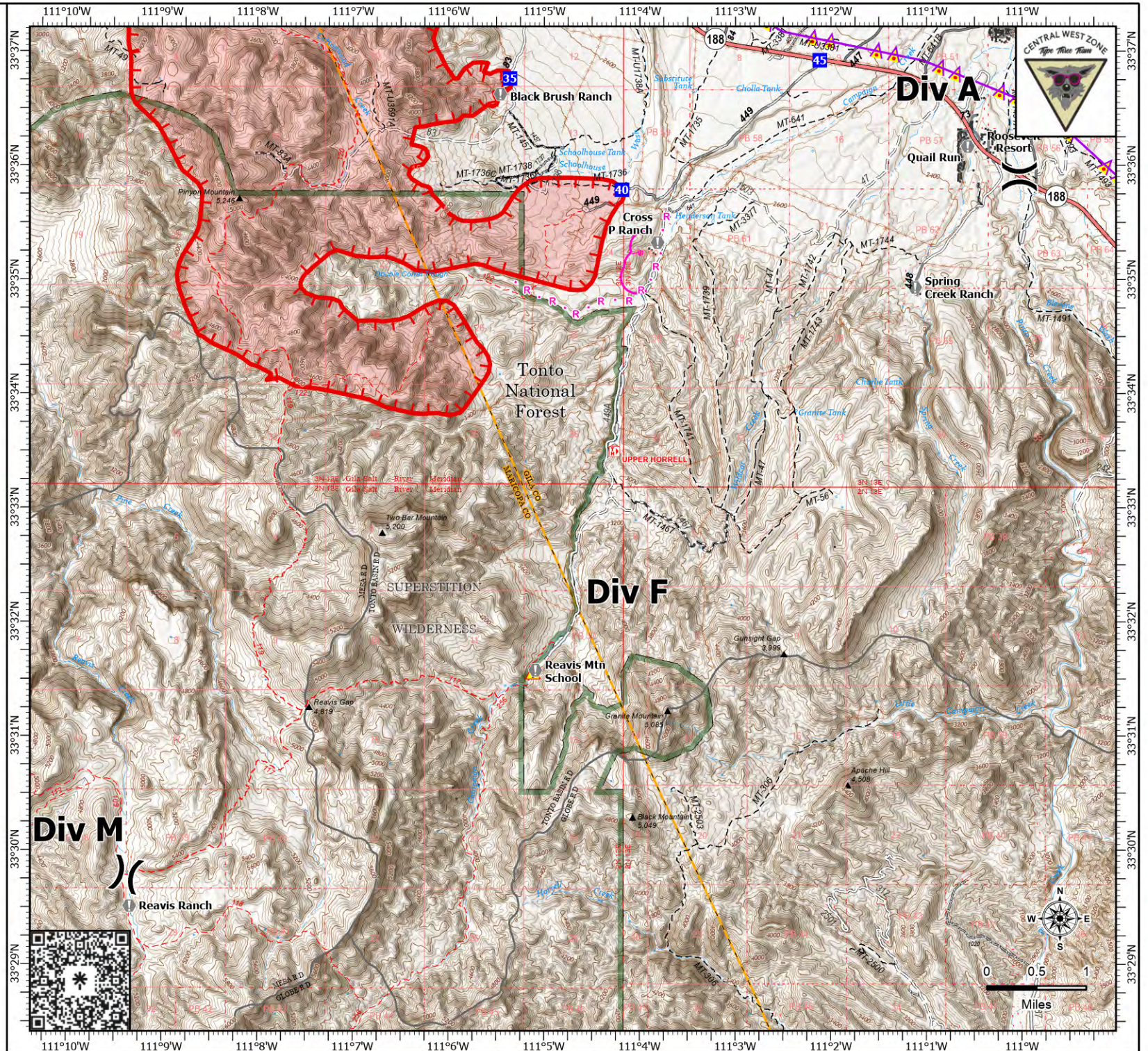
#### AZ-TNF-001130

#### 7/16/2024 Day

8,895 acres at 7/15/2024 1530hr

- (X) Division Break
- Drop Point
- ⦿ Value at Risk
- ⚠ Hazard
- Planned Burnout
- R · Planned Road as Line
- Aerial Hazard
- Uncontained
- Wildfire Daily Fire Perimeter
- Structure
- Secondary Highway
- - - Motorized Trail
- - - Non-Motorized Trail
- - - National Designated Trail
- Paved
- Gravel Road
- Dirt Road
- Unimproved Road
- Forest Service Roads Closed
- Fence
- Administrative FS Boundary
- Ranger District Boundary
- FS Wilderness Boundary
- County Boundary

1:85,000 | CWZ GISS | 7/15/2024 1948  
Acres from IR and GPS  
North American 1983 Datum. Lat/Long Grid



# IAP

## Div M

### Black

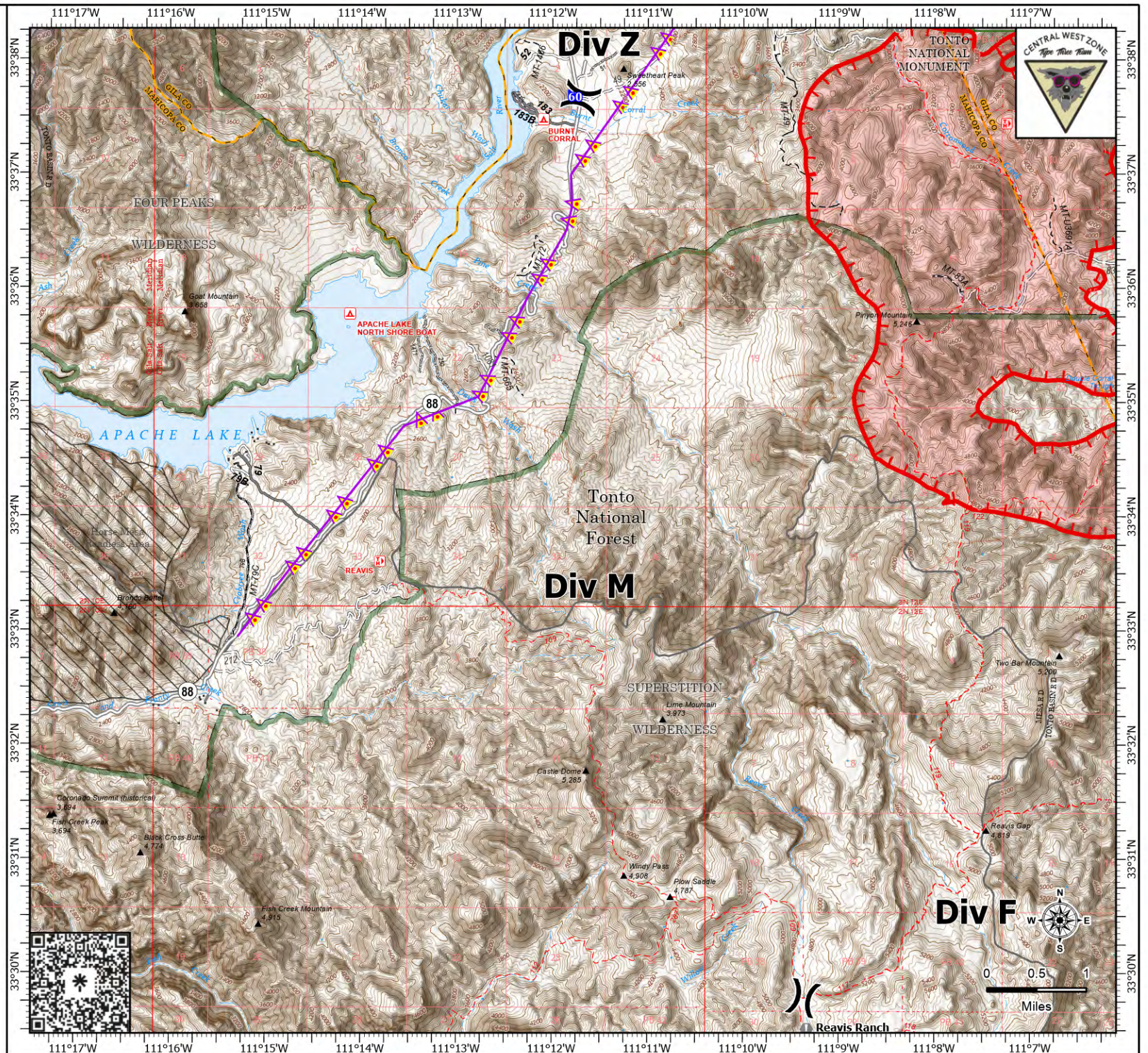
#### AZ-TNF-001130

#### 7/16/2024 Day

8,895 acres at 7/15/2024 1530hr

- (X) Division Break
- Drop Point
- ⚠ Value at Risk
- Aerial Hazard
- ⌚ Uncontained
- ▭ Wildfire Daily Fire Perimeter
- Structure
- State Road (Dirt)
- - - Motorized Trail
- - - Non-Motorized Trail
- - - National Designated Trail
- - - Trail
- Paved
- Dirt Road
- Unimproved Road
- Forest Service Roads Closed
- Fence
- ▭ Administrative FS Boundary
- ▭ Ranger District Boundary
- ▭ FS Wilderness Boundary
- ▭ NPS Unit Boundary
- ▭ County Boundary
- ▭ USFS Roadless Areas

1:85,000 | CWZ GISS | 7/15/2024 1948  
Acres from IR and GPS  
North American 1983 Datum, Lat/Long Grid



# IAP

## Div Z

### Black

AZ-TNF-001130

7/16/2024 Day

8,895 acres at 7/15/2024 1530hr

- Helispot
- ) Division Break
- Drop Point
- ⊕ Value at Risk
- ⊕ Gate
- ◆ Internet Access
- ▲ Hazard
- ⊕ Draft Site
- M Completed Mixed Construction Line
- M Planned Mixed Construction Line
- R Planned Road as Line
- Aerial Hazard
- Uncontained
- Wildfire Daily Fire Perimeter
- Structure
- Secondary Highway
- Secondary Paved
- State Road (Dirt)
- Secondary Dirt
- Motorized Trail
- Non-Motorized Trail
- National Designated Trail
- Trail
- Paved
- Gravel Road
- Dirt Road
- Unimproved Road
- Forest Service Roads Closed
- Fence
- Administrative FS Boundary
- Ranger District Boundary
- FS Wilderness Boundary
- NPS Unit Boundary
- County Boundary

1:60,000 | CWZ GISS | 7/15/2024 1948  
Acres from IR and GPS  
North American 1983 Datum. Lat/Long Grid

