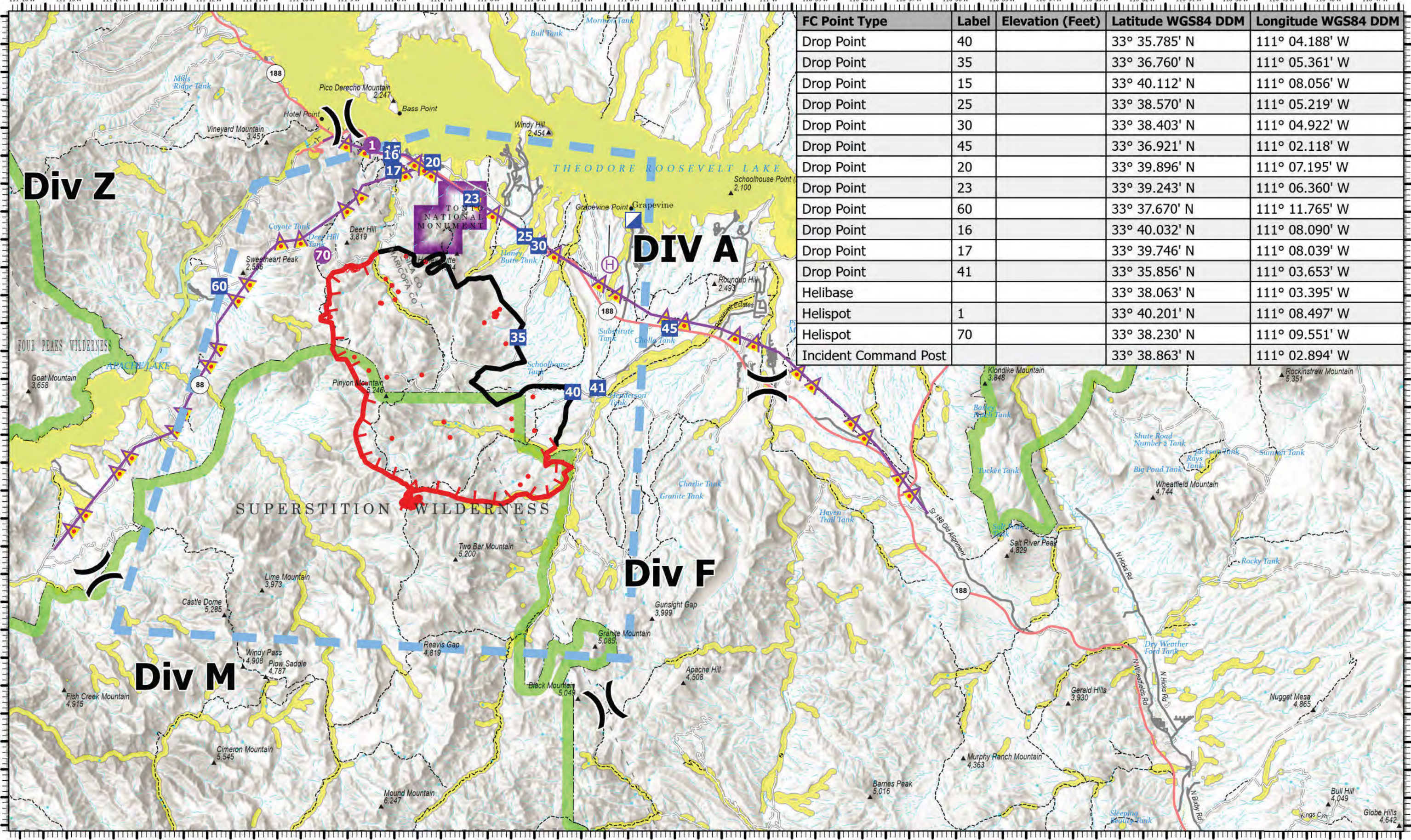


FC Point Type	Label	Elevation (Feet)	Latitude WGS84 DDM	Longitude WGS84 DDM
Drop Point	40		33° 35.785' N	111° 04.188' W
Drop Point	35		33° 36.760' N	111° 05.361' W
Drop Point	15		33° 40.112' N	111° 08.056' W
Drop Point	25		33° 38.570' N	111° 05.219' W
Drop Point	30		33° 38.403' N	111° 04.922' W
Drop Point	45		33° 36.921' N	111° 02.118' W
Drop Point	20		33° 39.896' N	111° 07.195' W
Drop Point	23		33° 39.243' N	111° 06.360' W
Drop Point	60		33° 37.670' N	111° 11.765' W
Drop Point	16		33° 40.032' N	111° 08.090' W
Drop Point	17		33° 39.746' N	111° 08.039' W
Drop Point	41		33° 35.856' N	111° 03.653' W
Helibase			33° 38.063' N	111° 03.395' W
Helispot	1		33° 40.201' N	111° 08.497' W
Helispot	70		33° 38.230' N	111° 09.551' W
Incident Command Post			33° 38.863' N	111° 02.894' W



**BLACK**  
**AZ-TNF-001130**  
**7/19/2024 DAY**  
 11,162 acres  
 as of 7/18/2024 0152hr

- Helispot
- Drop Point
- Contained
- FS Wilderness Boundary
- Ⓜ Helibase
- IR Isolated Heat Source
- Uncontained
- National Park Service Lands
- )( Division Break
- IR Scattered Heat
- Retardant Avoidance Areas
- Aerial Hazard
- Temporary Flight Restriction
- Incident Command Post

1 2 NORTH 3  
 Nautical Miles



1:115,000 | SW3 CIMT | 7/18/2024 2207  
 Acres from IR and GPS | North American 1983 Datum. | GCS (Latitude/Longitude) Grid