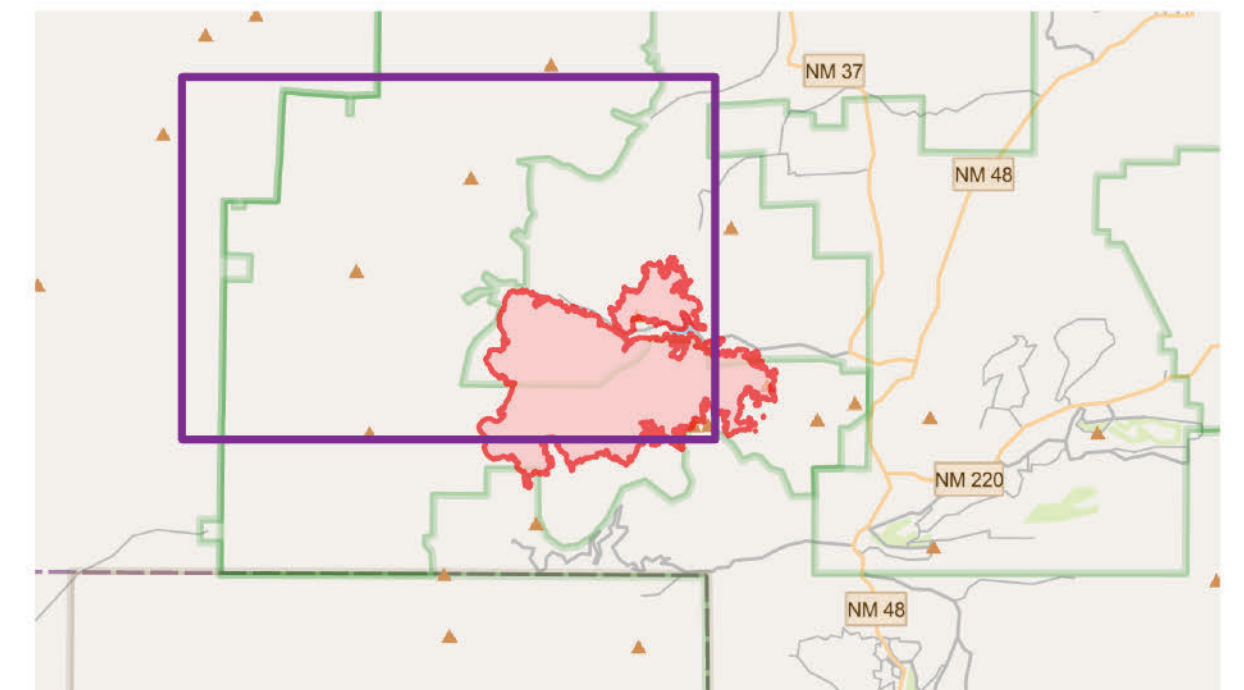


BLUE 2
NM-LNF-000227
06/04/2024 DAY
 7,495 acres
 as of 06/02/2024 2354

- | | | | | |
|----------------------|-----------------------------------|---|----------------------------|---------------------|
| Hellspot | Dip Site | Uncontained Wildfire Daily Fire Perimeter | Closed Roads | 2022 |
| Division Break | Pump | Wildfire Daily Fire Perimeter | Dirt (Not Paved) | 2012 |
| Drop Point | Completed Dozer Line | FS Roads Decommissioned | Administrative FS Boundary | Campground |
| Lookout | Completed Hand Line | Paved Road | Ranger District Boundary | Trailhead |
| Hot Spot - Spot Fire | Completed Mixed Construction Line | Gravel Road | FS Wilderness Boundary | Forest Service Land |
| Other | Dozer Push | Dirt Roads | Historic Fire Perimeters | State Lands |
| Dozer Push | Mobile Weather Unit | Unimproved Roads | | |
| Repeater | Hazard | | | |



1:14,000 | 6/3/2024 2125
 Acres from IR Image Interpretation | North American 1983 Datum. | GCS (Latitude/Longitude) Grid