



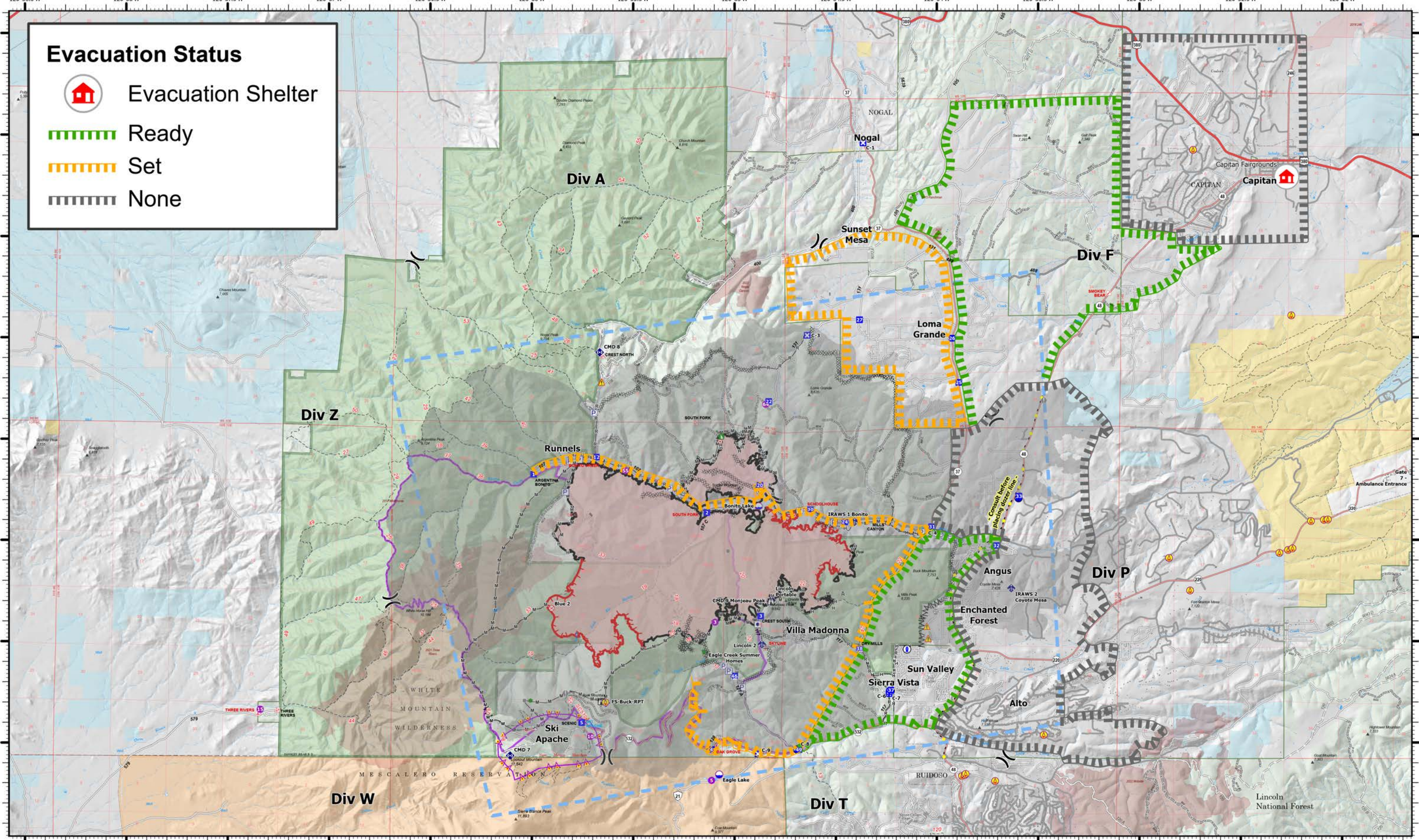


Evacuation Status





-  Evacuation Shelter
-  Ready
-  Set
-  None



BLUE 2
NM-LNF-000227
06/04/2024 DAY

7,495 acres
 as of 06/02/2024 2354

- | | | | | | | |
|---|--|---|---|---|---|---|
|  Little Bear Fire 2012 |  Hot Spot - Spot Fire |  Repair Point |  Hydrant |  Highlighted Feature |  Structure |  Gravel Road |
|  Aerial Hazard |  Fire Origin |  Dozer Push |  Completed Dozer Line |  Other |  Primary Highway |  Dirt Road |
|  Helispot |  Value at Risk |  Mobile Weather Unit |  Completed Fuel Break |  Aerial Hazard |  Secondary Highway |  Unimproved Road |
|  Division Break |  Other |  Repeater |  Completed Hand Line |  Temporary Flight Restriction |  Secondary Paved |  Forest Service Roads Closed |
|  Drop Point |  Gate |  Hazard |  Completed Mixed Construction Line |  Contained |  Secondary Dirt |  Trail |
|  Closure |  Fire Station |  Dip Site |  Completed Road as Line |  Uncontained |  Trail |  Paved |
|  Lookout |  Bridge |  Draft Site |  Access Route |  Wildfire Daily Fire Perimeter | | |

1:32,000 | Southwest CIMT 3 | 6/3/2024 2154
 Acres from IR Image Interpretation | WGS 1984 Datum. | GCS (Latitude/Longitude) Grid