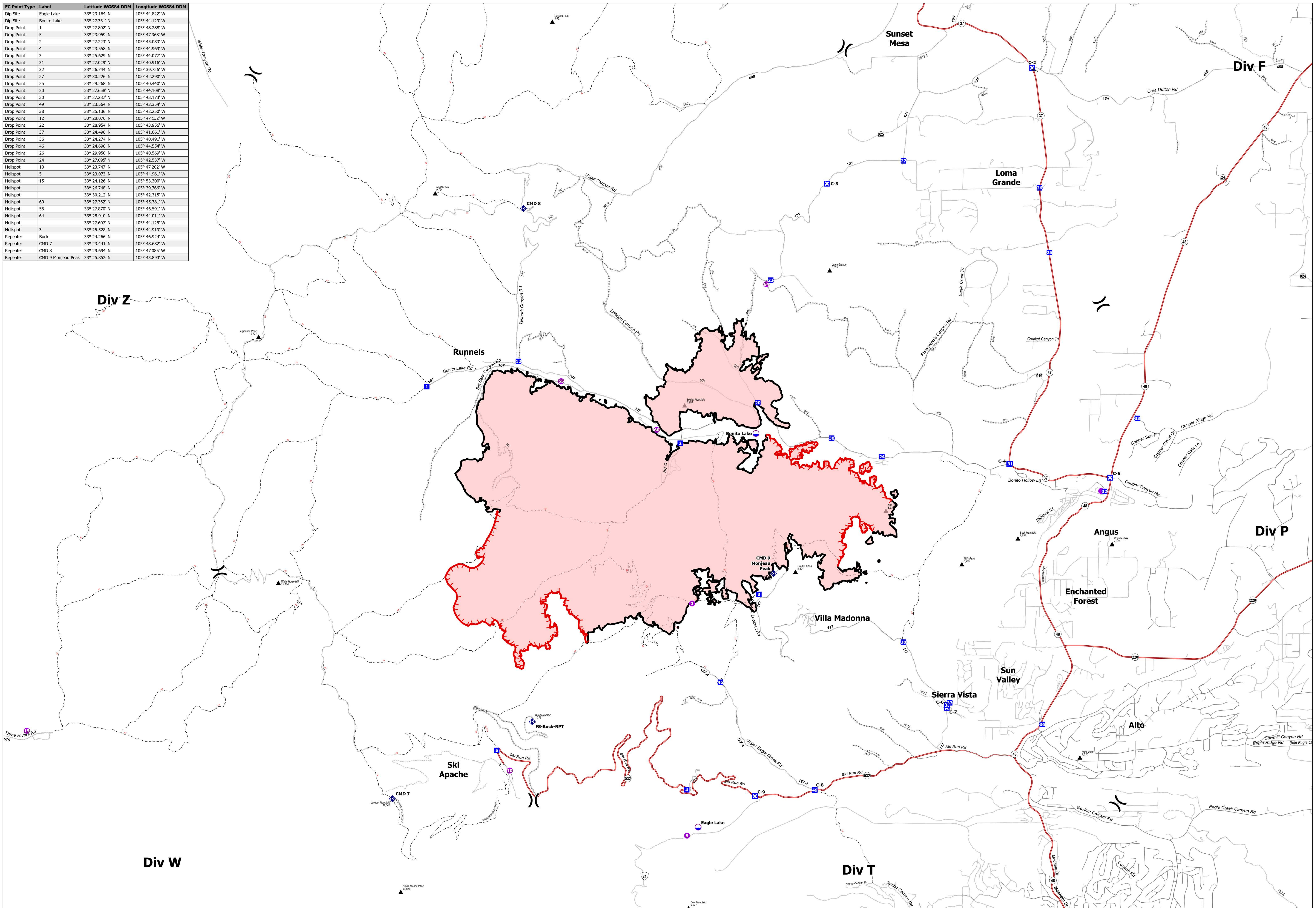


FC Point Type	Label	Latitude WGS84 DDM	Longitude WGS84 DDM
Dip Site	Eagle Lake	33° 23.164' N	105° 44.822' W
Dip Site	Bonito Lake	33° 27.331' N	105° 44.129' W
Drop Point	1	33° 27.802' N	105° 48.288' W
Drop Point	5	33° 23.959' N	105° 47.368' W
Drop Point	2	33° 27.223' N	105° 45.083' W
Drop Point	4	33° 23.558' N	105° 44.969' W
Drop Point	3	33° 25.629' N	105° 44.077' W
Drop Point	31	33° 27.029' N	105° 40.916' W
Drop Point	32	33° 26.741' N	105° 39.726' W
Drop Point	27	33° 30.226' N	105° 42.290' W
Drop Point	25	33° 29.268' N	105° 40.440' W
Drop Point	20	33° 27.658' N	105° 44.108' W
Drop Point	30	33° 27.287' N	105° 43.173' W
Drop Point	49	33° 23.594' N	105° 43.354' W
Drop Point	38	33° 25.136' N	105° 42.250' W
Drop Point	12	33° 28.076' N	105° 47.132' W
Drop Point	22	33° 28.954' N	105° 43.956' W
Drop Point	37	33° 24.496' N	105° 41.661' W
Drop Point	36	33° 24.274' N	105° 40.491' W
Drop Point	46	33° 24.698' N	105° 44.554' W
Drop Point	26	33° 29.950' N	105° 40.569' W
Drop Point	24	33° 27.095' N	105° 42.537' W
Helispot	10	33° 23.747' N	105° 47.202' W
Helispot	5	33° 23.073' N	105° 44.961' W
Helispot	15	33° 24.126' N	105° 53.300' W
Helispot		33° 26.748' N	105° 39.766' W
Helispot		33° 30.212' N	105° 42.315' W
Helispot	60	33° 27.362' N	105° 45.381' W
Helispot	55	33° 27.870' N	105° 46.591' W
Helispot	64	33° 28.910' N	105° 44.011' W
Helispot		33° 27.607' N	105° 44.125' W
Helispot	3	33° 25.528' N	105° 44.919' W
Repeater	Buck	33° 24.266' N	105° 46.924' W
Repeater	CMD 7	33° 23.441' N	105° 48.682' W
Repeater	CMD 8	33° 29.694' N	105° 47.085' W
Repeater	CMD 9 Monjeau Peak	33° 25.852' N	105° 43.893' W



Communications
BLUE 2
 NM-LNF-000227
 06/04/2024 DAY
 7,495 acres
 as of 06/02/2024 2354

- Helispot
- ⋈ Repeater
- Dip Site
- Drop Point
- ⊠ Closure
- ⬭ Wildfire Daily Fire Perimeter
- Secondary Highway
- Secondary Paved
- - - Secondary Dirt
- ⋯ Trail



1:24,000 | Southwest CIMT 3
 Produced 6/3/2024 2215 | Acres from IR Image Interpretation

0 3

Miles

NORTH

SOUTHWEST AREA
INCIDENT MANAGEMENT TEAM **3**