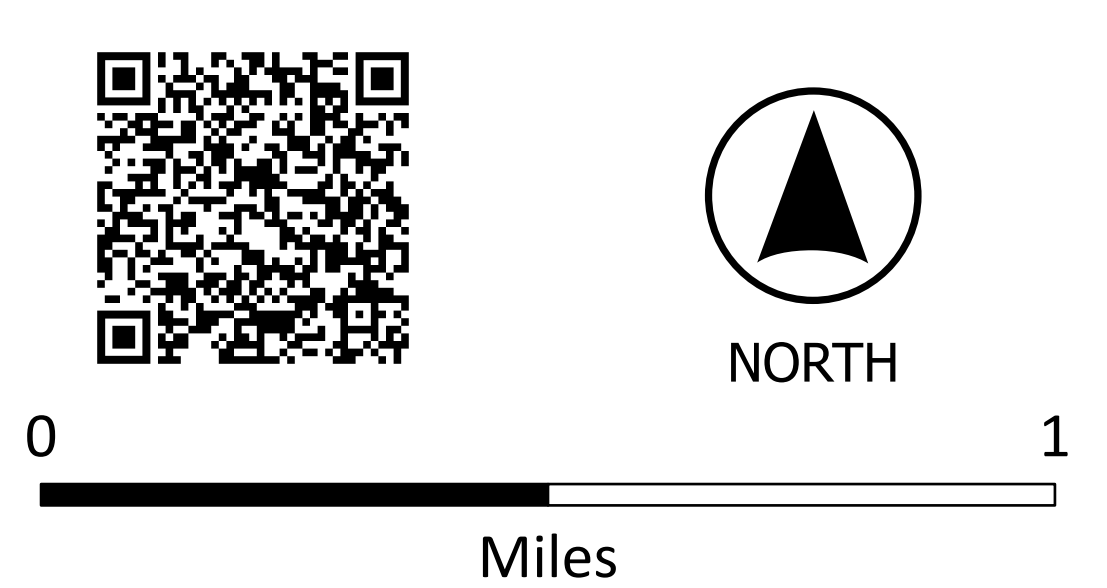
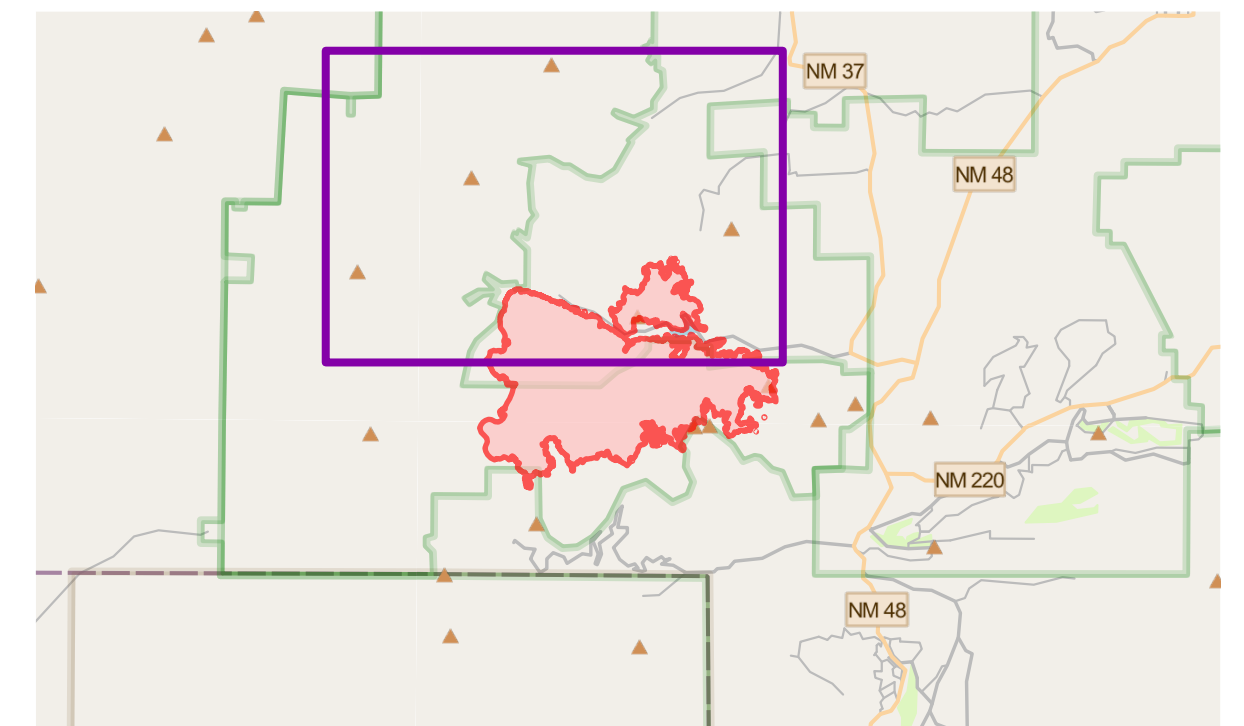


BLUE 2
NM-LNF-000227
06/05/2024 DAY
 7,532 acres
 as of 06/04/2024 1630

- | | | | | | |
|----------------------|----------------------|-----------------------------------|-------------------------|----------------------------|---------------------|
| Helispot | Mobile Weather Unit | Completed Mixed Construction Line | FS Roads Decommissioned | Administrative FS Boundary | 2012 Campground |
| Division Break | Repeater | Completed Road as Line | Paved Road | Ranger District Boundary | Trailhead |
| Drop Point | Hazard | Temporary Flight Restriction | Dirt Roads | FS Wilderness Boundary | Picnic Site |
| Closure | Dip Site | Contained | Unimproved Roads | Historic Fire Perimeters | Forest Service Land |
| Hot Spot - Spot Fire | Draft Site | Uncontained | Closed Roads | 2021 | State Lands |
| Value at Risk | Pump | Wildfire Daily Fire Perimeter | Dirt (Not Paved) | 2022 | |
| Other | Completed Dozer Line | | | | |
| Repair Point | Completed Hand Line | | | | |
| Dozer Push | | | | | |



1:12,000 | 6/4/2024 2311
 Acres from IR Image Interpretation | North American 1983 Datum. | GCS (Latitude/Longitude) Grid