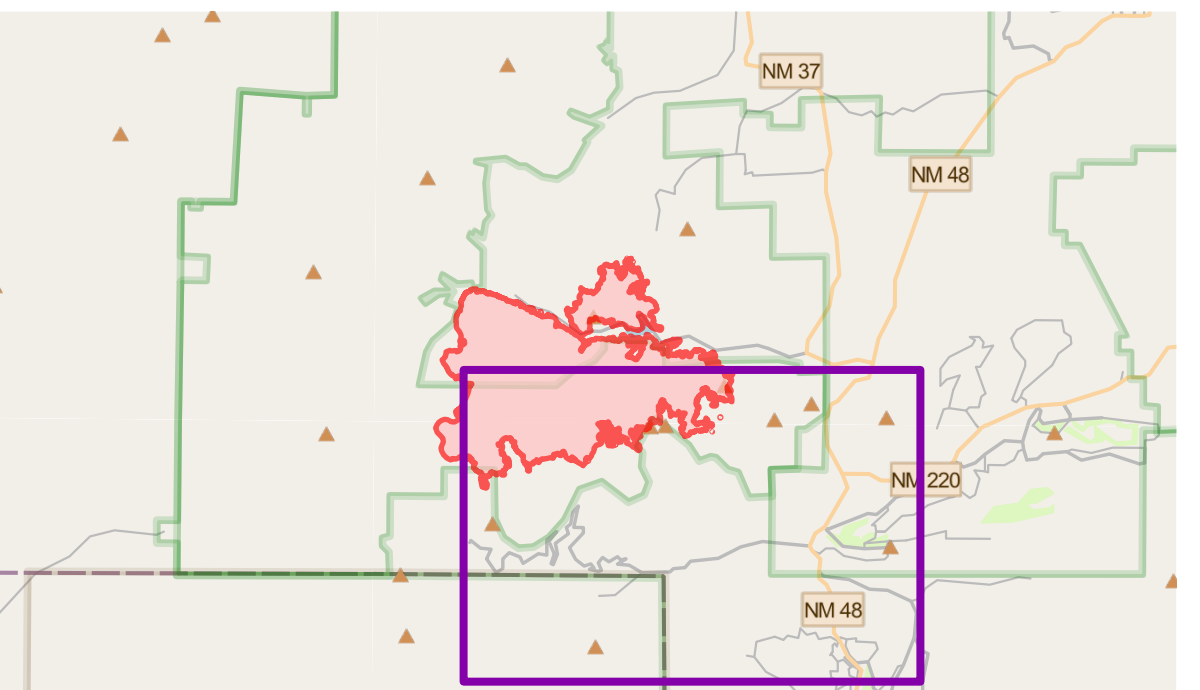


BLUE 2
NM-LNF-000227
06/05/2024 DAY
 7,532 acres
 as of 06/04/2024 1630

- | | | | | | |
|----------------|----------------------|-----------------------------------|-------------------------------|----------------------------|-----------------------|
| Aerial Hazard | Mobile Weather Unit | Completed Hand Line | Contained | Paved Roads | Campground |
| Helispot | Repeater | Completed Mixed Construction Line | Uncontained | Dirt (Not Paved) | Trailhead |
| Division Break | Hazard | Completed Road as Line | Wildfire Daily Fire Perimeter | Administrative FS Boundary | Ski Area Alpine |
| Drop Point | Dip Site | Planned Mixed Construction Line | FS Roads Decommissioned | Ranger District Boundary | American Indian Lands |
| Closure | Draft Site | Planned Road as Line | Gravel Road | FS Wilderness Boundary | Forest Service Land |
| Lookout | Hydrant | Access Route | Unimproved Roads | Historic Fire Perimeters | |
| Value at Risk | Other Property | Highlighted Feature | Closed Roads | 2021 | |
| Other | Pump | Temporary Flight Restriction | Secondary Highway | 2022 | |
| Gate | Water Tank | | | | |
| Bridge | Completed Dozer Line | | | | |
| Repair Point | Completed Fuel Break | | | | |



1:12,000 | 6/4/2024 23:14
 Acres from IR Image Interpretation | North American 1983 Datum. | GCS (Latitude/Longitude) Grid

0 1 Miles

NORTH

