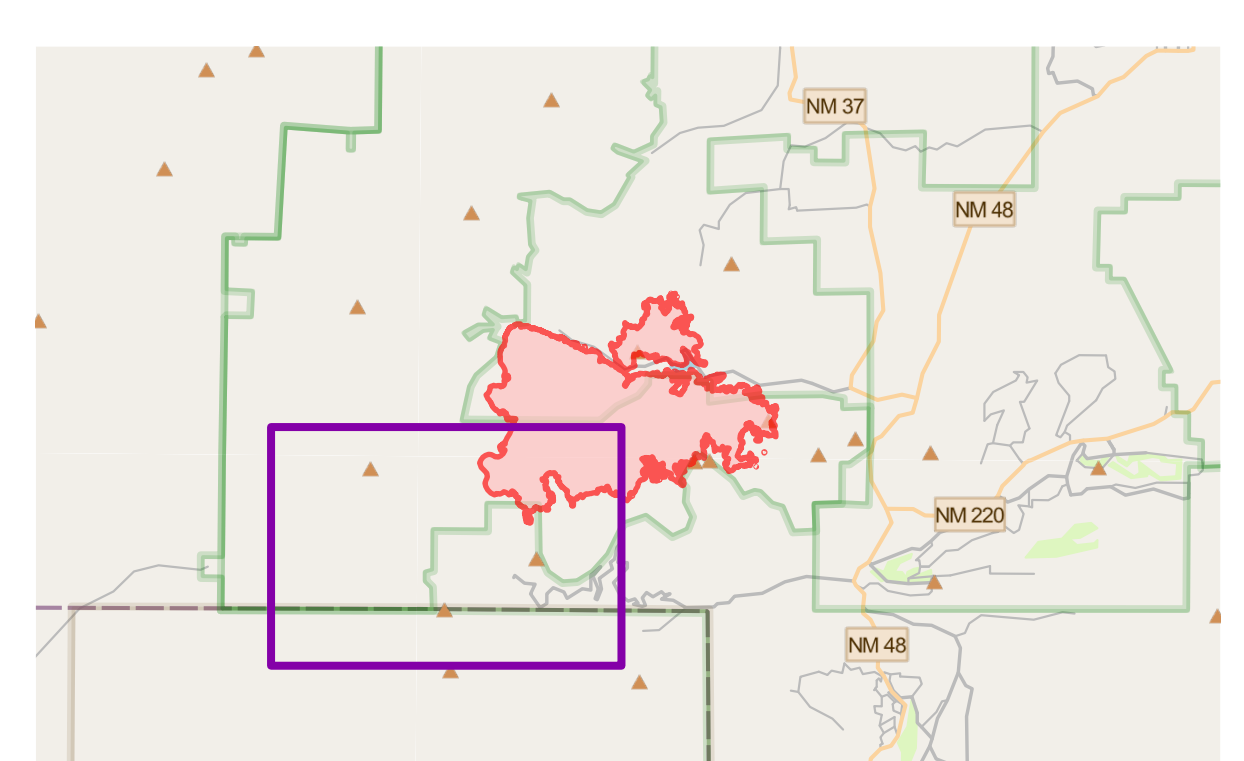


**BLUE 2**  
**NM-LNF-000227**  
**06/05/2024 DAY**  
 7,532 acres  
 as of 06/04/2024 1630

- |                |                                   |                               |                            |                       |
|----------------|-----------------------------------|-------------------------------|----------------------------|-----------------------|
| Aerial Hazard  | Repeater                          | Temporary Flight Restriction  | Dirt (Not Paved)           | 2012                  |
| Helispot       | Completed Dozer Line              | Contained                     | Administrative FS Boundary | Trailhead             |
| Division Break | Completed Fuel Break              | Uncontained                   | Ranger District Boundary   | Ski Area Alpine       |
| Drop Point     | Completed Hand Line               | Wildfire Daily Fire Perimeter | FS Wilderness Boundary     | American Indian Lands |
| Lookout        | Completed Mixed Construction Line | Closed Roads                  | Historic Fire Perimeters   | Forest Service Land   |
| Value at Risk  | Planned Mixed Construction Line   | Paved Roads                   | 2021                       |                       |
| Other          | Planned Road as Line              |                               |                            |                       |
| Repair Point   |                                   |                               |                            |                       |



0 1  
Miles

NORTH



1:9,200 | 6/4/2024 2310  
 Acres from IR Image Interpretation | North American 1983 Datum. | GCS (Latitude/Longitude) Grid