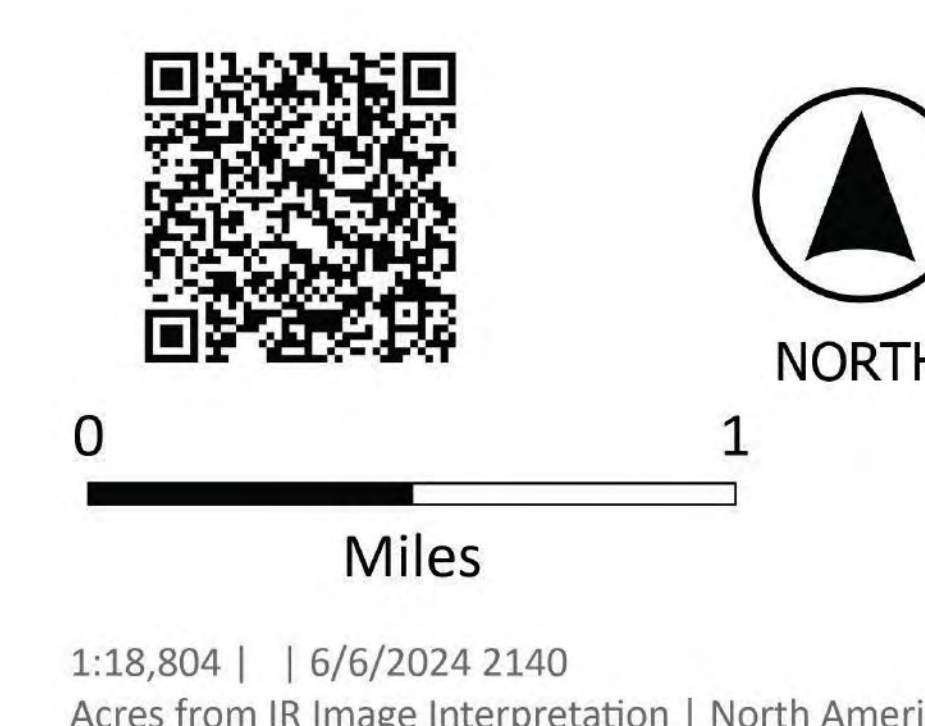
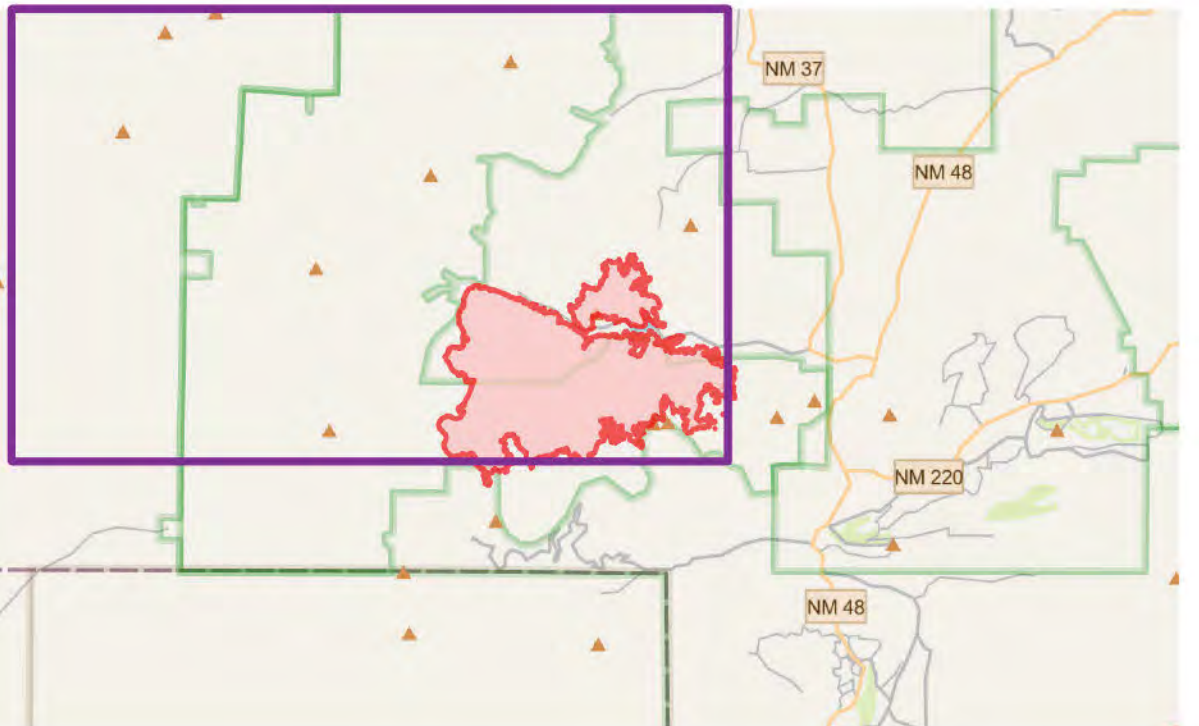


BLUE 2
NM-LNF-000227
06/07/2024 DAY
 7,532 acres
 as of 06/04/2024 1630

- | | | | | | |
|--|--|---|--|---|---|
| <ul style="list-style-type: none"> Helispot Mobile Weather Unit Repeater Drop Point Closure Hot Spot - Spot Fire Value at Risk Other Gate Bridge Repair Point Dozer Push | <ul style="list-style-type: none"> Division Break Hazard Dip Site Draft Site Pump Completed Dozer Line Completed Hand Line Completed Mixed Construction Line Completed Road as Line Access Route | <ul style="list-style-type: none"> Temporary Flight Restriction Contained Uncontained Wildfire Daily Fire Perimeter FS Roads Decommissioned Paved Road Gravel Road Dirt Roads | <ul style="list-style-type: none"> Unimproved Roads Closed Roads Dirt (Not Paved) Administrative FS Boundary Ranger District Boundary FS Wilderness Boundary Historic Fire Perimeters 2021 | <ul style="list-style-type: none"> 2022 2012 Campground Trailhead Picnic Site Forest Service Land Bureau of Land Management Lands State Lands | <ul style="list-style-type: none"> In Use - Fire Management Completed - Ready for Inspection Completed - Inspected Other - See Comments |
|--|--|---|--|---|---|



SOUTHWEST AREA

INCIDENT MANAGEMENT TEAM 3

1:18,804 | 6/6/2024 2140
 Acres from IR Image Interpretation | North American 1983 Datum. | GCS (Latitude/Longitude) Grid