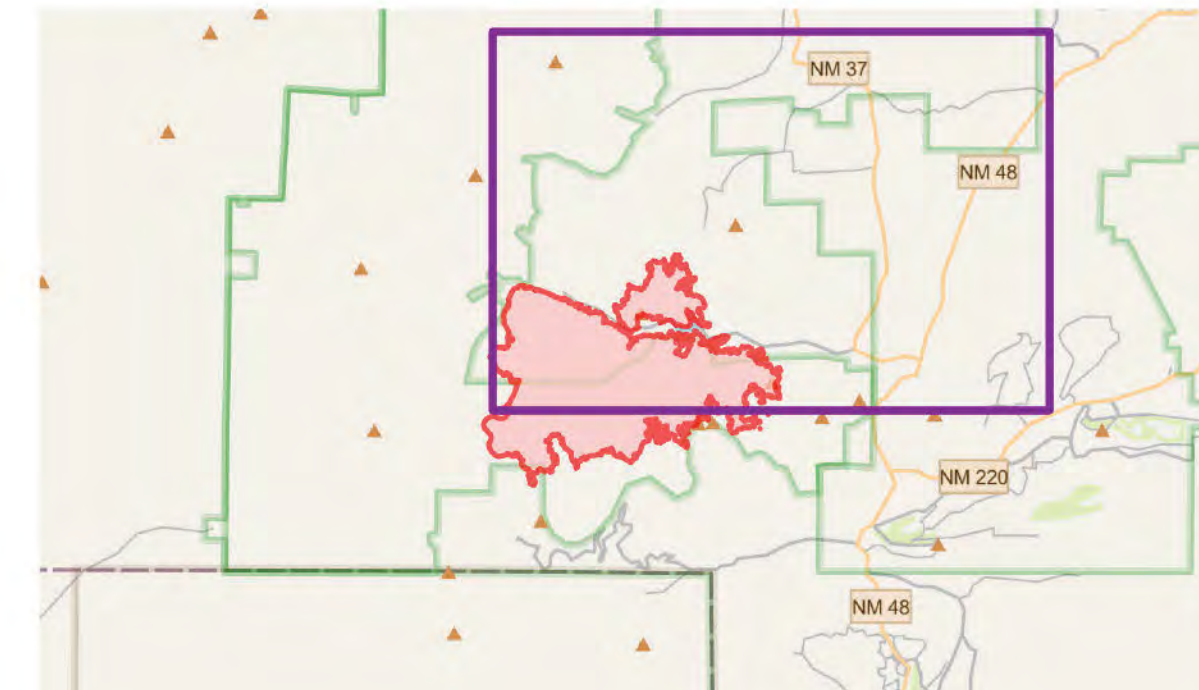


BLUE 2
NM-LNF-000227
06/07/2024 DAY
 7,532 acres
 as of 06/04/2024 1630

- | | | | | | |
|---|---|---|--|---|--|
| <ul style="list-style-type: none"> ● Helispot ⌘ Division Break ⬇ Drop Point ⊠ Closure ⊙ Hot Spot - Spot Fire ⊙ Value at Risk ⊙ Other ⊙ Gate ⊙ Fire Station ⊙ Bridge ⊙ Repair Point | <ul style="list-style-type: none"> ⬆ Dozer Push ⊙ Mobile Weather Unit ⊙ Repeater ⊙ Hazard ⊙ Dip Site ⊙ Draft Site ⊙ Pump ⊙ Water Tank ⊙ Completed Dozer Line ⊙ Completed Hand Line ⊙ Completed Mixed Construction Line | <ul style="list-style-type: none"> — Completed Road as Line — Highlighted Feature — Temporary Flight Restriction — Contained — Uncontained — Wildfire Daily Fire Perimeter — FS Roads Decommissioned — Paved Road — Dirt Roads | <ul style="list-style-type: none"> — Unimproved Roads — Closed Roads — Secondary Highway — Paved Roads — Dirt (Not Paved) — Administrative FS Boundary — Ranger District Boundary — FS Wilderness Boundary | <ul style="list-style-type: none"> — Historic Fire Perimeters — 2021 — 2022 — 2012 ⊙ Campground ⊙ Trailhead ⊙ Picnic Site — Forest Service Land | <ul style="list-style-type: none"> — State Lands ⊙ In Use - Fire Management ⊙ Completed - Ready for Inspection ⊙ Completed - Inspected |
|---|---|---|--|---|--|



1:14,625 | 6/6/2024 2143
 Acres from IR Image Interpretation | North American 1983 Datum. | GCS (Latitude/Longitude) Grid

0 1 Miles

NORTH

