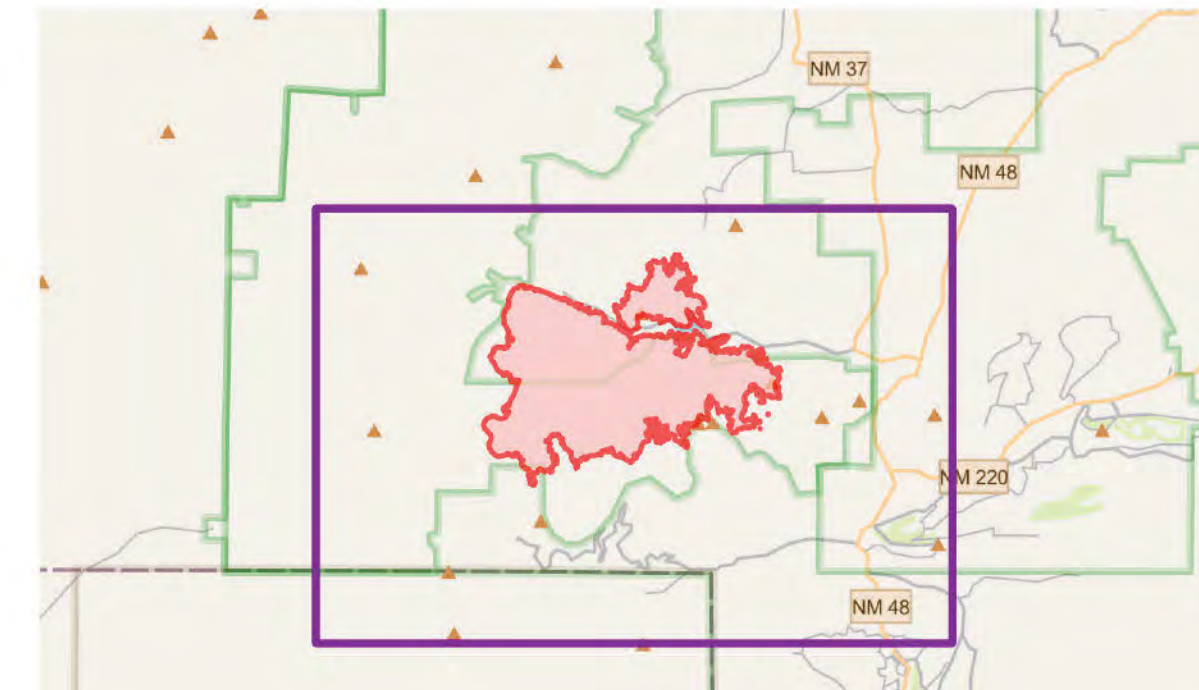


BLUE 2
NM-LNF-000227
06/07/2024 DAY
 7,532 acres
 as of 06/04/2024 1630

- | | | | | | | |
|--|--|--|--|--|---|---|
| <ul style="list-style-type: none"> Aerial Hazard Helisport Division Break Drop Point Lookout Hot Spot - Spot Fire Value at Risk Other Gate Fire Station Bridge | <ul style="list-style-type: none"> Repair Point Dozer Push Mobile Weather Unit Repeater Hazard Dip Site Draft Site Hydrant Pump Water Tank Completed Dozer Line Completed Fuel Break | <ul style="list-style-type: none"> Completed Hand Line Completed Mixed Construction Line Completed Road as Line Planned Mixed Construction Line Planned Road as Line Access Route Highlighted Feature Temporary Flight Restriction Contained | <ul style="list-style-type: none"> Uncontained Wildfire Daily Fire Perimeter FS Roads Decommissioned Paved Road Gravel Road Dirt Roads Unimproved Roads Closed Roads | <ul style="list-style-type: none"> Secondary Highway Paved Roads Dirt (Not Paved) Administrative FS Boundary Ranger District Boundary FS Wilderness Boundary Historic Fire Perimeters 2021 | <ul style="list-style-type: none"> Campground Trailhead Picnic Site Ski Area Alpine American Indian Lands Forest Service Land | <ul style="list-style-type: none"> In Use - Fire Management Completed - Ready for Inspection Completed - Inspected Other - See Comments |
|--|--|--|--|--|---|---|



1:16,715 | 6/6/2024 2148
 Acres from IR Image Interpretation | North American 1983 Datum. | GCS (Latitude/Longitude) Grid