

111°56'W 111°55.5'W 111°55'W 111°54.5'W 111°54'W 111°53.5'W 111°53'W 111°52.5'W 111°52'W 111°51.5'W 111°51'W 111°50.5'W 111°50'W 111°49.5'W 111°49'W 111°48.5'W 111°48'W 111°47.5'W 111°47'W 111°46.5'W 111°46'W 111°45.5'W 111°45'W 111°44.5'W 111°44'W 111°43.5'W 111°43'W 111°42.5'W

Transportation

SCD - Boulder View

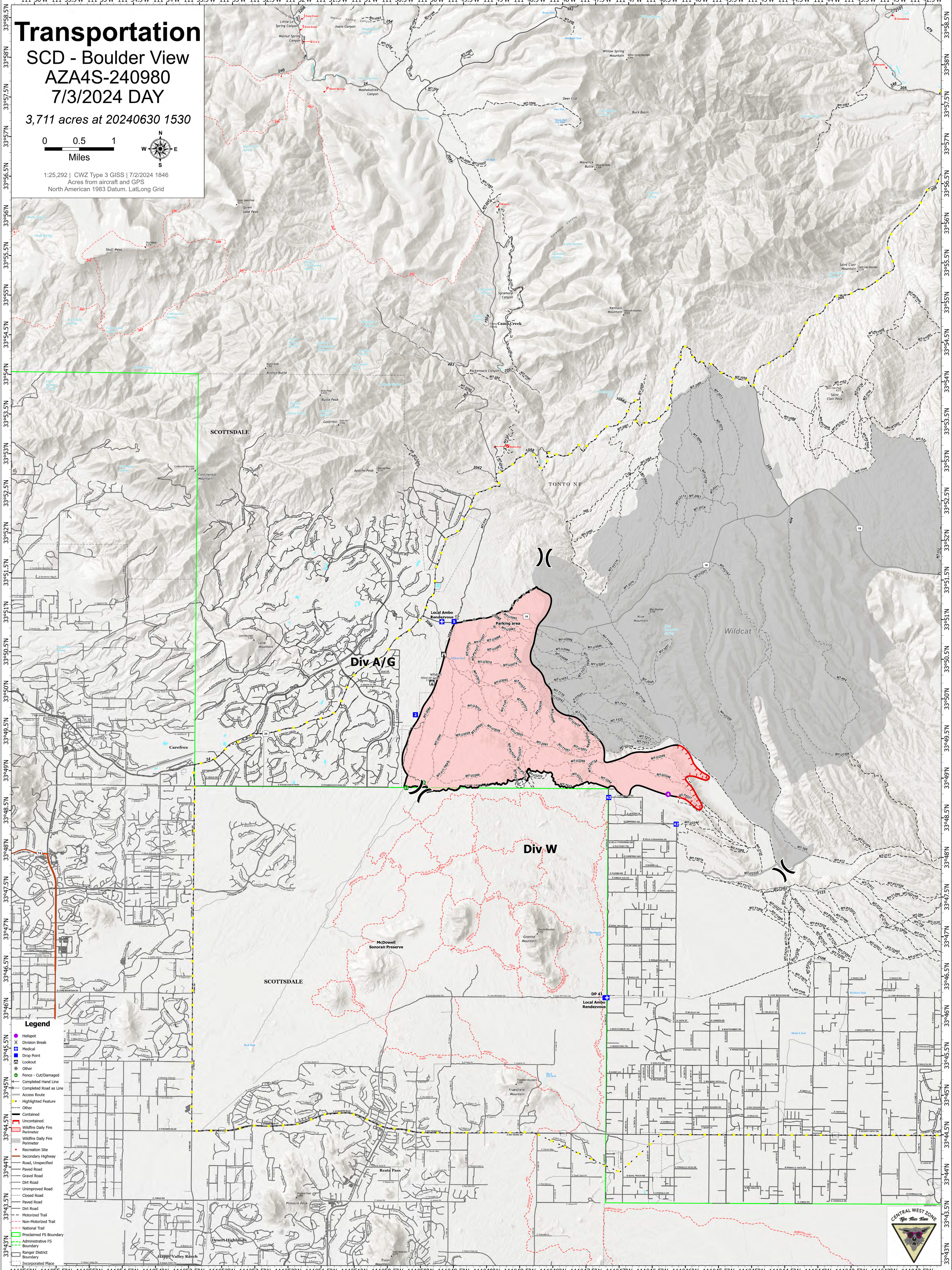
AZA4S-240980

7/3/2024 DAY

3,711 acres at 20240630 1530



1:25,292 | CWZ Type 3 GISS | 7/2/2024 1846
Acres from aircraft and GPS
North American 1983 Datum, LatLong Grid



- ### Legend
- Helispot
 - ⌵ Division Break
 - ⚡ Medical
 - ⬇ Drop Point
 - Lookout
 - ⬆ Fence - Cut/Damaged
 - ⬆ Completed Hand Line
 - ⬆ Completed Road as Line
 - ⬆ Access Route
 - ⬆ Highlighted Feature
 - ⬆ Other
 - ⬆ Contained
 - ⬆ Uncontained
 - ⬆ Wildfire Daily Fire Perimeter
 - ⬆ Wildfire Daily Fire Perimeter
 - ⬆ Recreation Site
 - ⬆ Secondary Highway
 - ⬆ Road, Unspecified
 - ⬆ Paved Road
 - ⬆ Gravel Road
 - ⬆ Dirt Road
 - ⬆ Unimproved Road
 - ⬆ Closed Road
 - ⬆ Paved Road
 - ⬆ Dirt Road
 - ⬆ Motorized Trail
 - ⬆ Non-Motorized Trail
 - ⬆ National Trail
 - ⬆ Proclaimed FS Boundary
 - ⬆ Administrative FS Boundary
 - ⬆ Ranger District Boundary
 - ⬆ Incorporated Place



111°56'W 111°55.5'W 111°55'W 111°54.5'W 111°54'W 111°53.5'W 111°53'W 111°52.5'W 111°52'W 111°51.5'W 111°51'W 111°50.5'W 111°50'W 111°49.5'W 111°49'W 111°48.5'W 111°48'W 111°47.5'W 111°47'W 111°46.5'W 111°46'W 111°45.5'W 111°45'W 111°44.5'W 111°44'W 111°43.5'W 111°43'W 111°42.5'W