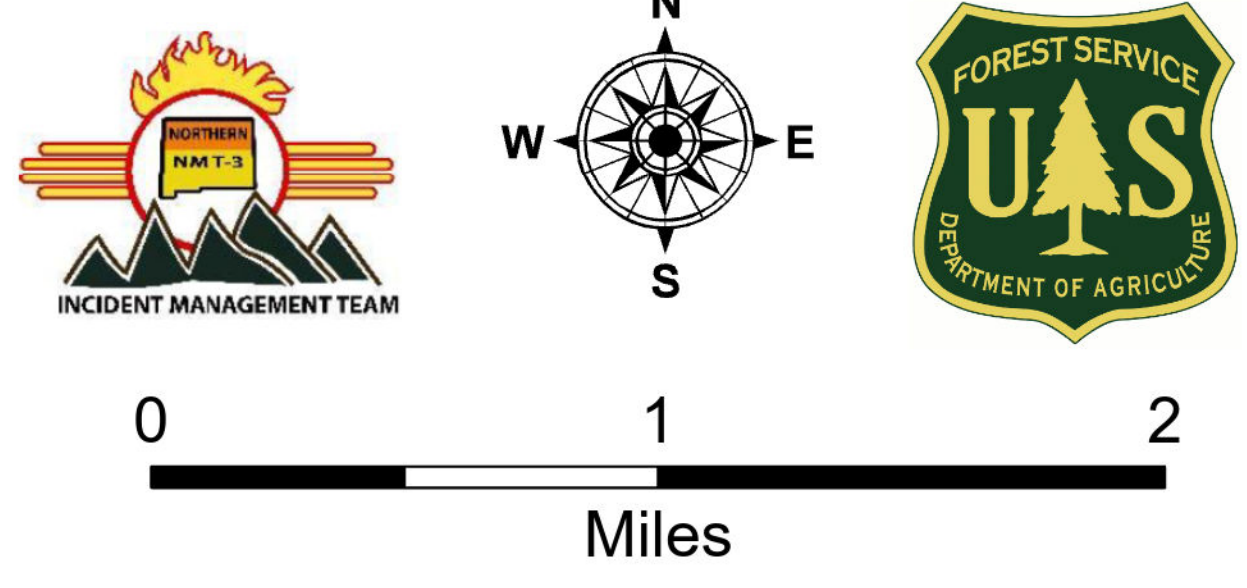
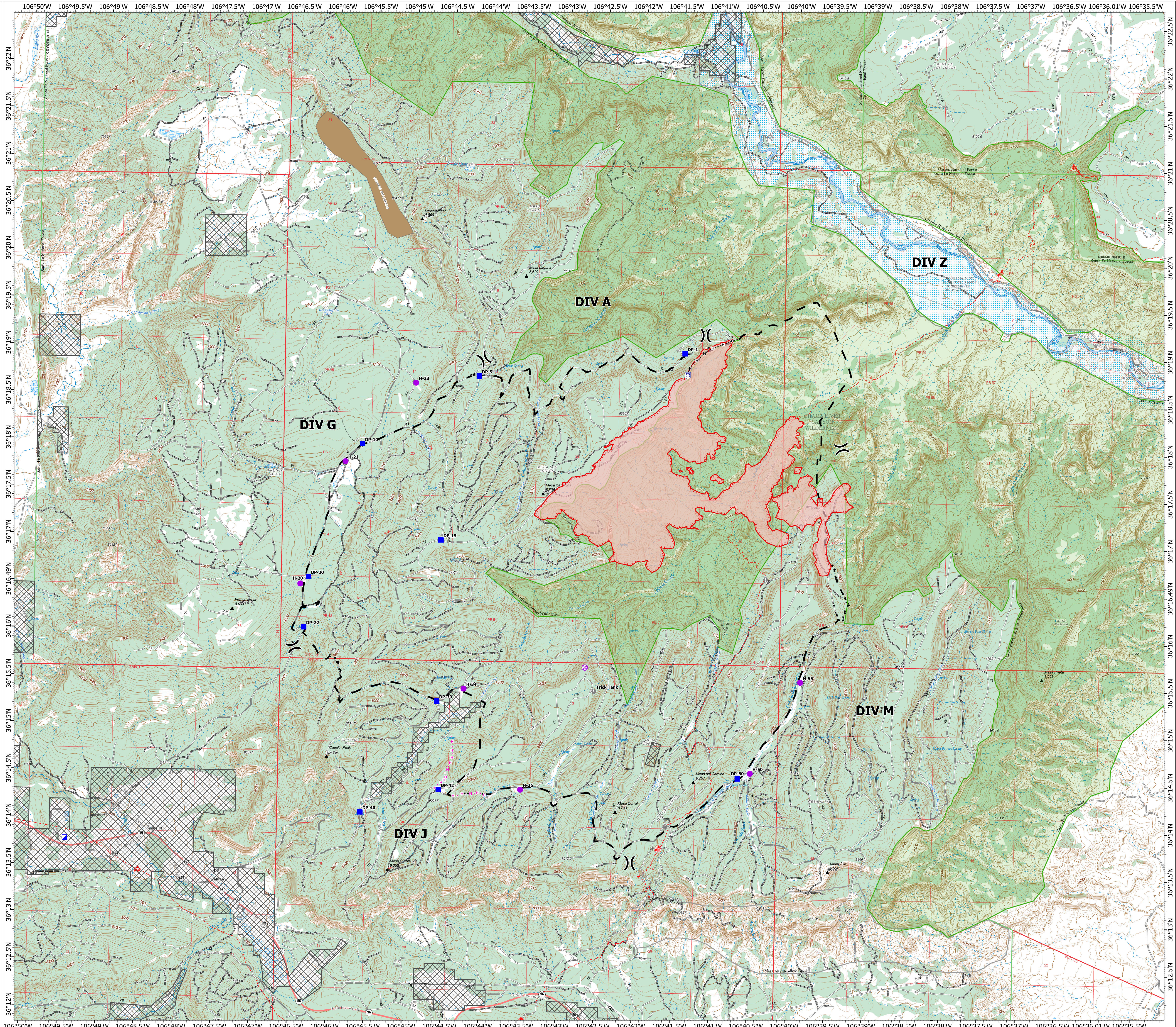


Briefing

Indio
NM-SNF-000091
5/26/24 Day

2,345 acres at 5/25/2024 1015

- Legend**
- Accountable Property
 - Other Property
 - Pump
 - Water Tank
 - Event Point
 - Air Operations
 - Aerial Hazard
 - Airstrip or Airport
 - Aviation Check Point
 - Mobile Retardant Base
 - Helibase
 - Sling Site
 - Unimproved Landing Area
 - UAS Launch and Recovery
 - Assignment Breaks
 - Division Break
 - Branch Break
 - Zone Break
 - Logistics
 - Medical
 - Incident Command Post
 - Drop Point
 - Closure
 - Camp
 - Staging Area
 - Operations
 - Lookout
 - Fire
 - Hot Spot - Spot Fire
 - Fire Origin
 - Reference
 - Value at Risk
 - Other
 - Landmark
 - Gate
 - Fire Station
 - Bridge
 - Repair
 - Structure Wrap
 - Stream Crossing
 - Road Repair
 - Retardant in Avoidance Area
 - Resource Location
 - Repair Point
 - Landing or Log Deck
 - Hazard Tree
 - Fence - Cut/Damaged
 - Dozer Push
 - Culvert
 - Clean Up Area
 - Communications
 - Mobile Weather Unit
 - Internet Access
 - Safety
 - Safety Zone
 - Hazard
 - Water
 - Dip Site
 - Draft Site
 - Hydrant
 - Restricted Water Source
 - Event Line
 - Ops Completed
 - Completed Burnout
 - Completed Dozer Line
 - Completed Fuel Break
 - Completed Hand Line
 - Completed Mixed Construction Line
 - Completed Plow Line
 - Completed Road as Line
 - Planning
 - Planned Burnout
 - Planned Dozer Line
 - Planned Fuel Break
 - Planned Hand Line
 - Planned Mixed Construction Line
 - Planned Plow Line
 - Planned Road as Line
 - Proposed Line
 - Reference
 - Access Route
 - Fence
 - Highlighted Feature
 - Management Action Point
 - Other
 - Repair
 - Repair Line
 - Road Repair
 - Safety
 - Escape Route
 - Air Ops
 - Aerial Hazard
 - Water Drop
 - Foam Drop
 - Retardant Drop
 - Aviation Route
 - Temporary Flight Restriction
 - Fire Perimeter
 - Fire Edge (Field Collection)
 - FC Line Type
 - Contained
 - Uncontained
 - Event Polygon
 - Other
 - Prescribed Fire
 - Wildfire Daily Fire
 - Perimeter
 - Polygon Type
 - Indio_Potential_Perim
 - Non-Federal Lands within Wilderness
 - Ownership
 - Private



1:24,000 | 5/25/2024 2123
Acres from IR and GPS
North American 1983 Datum, Lat/Long Grid