

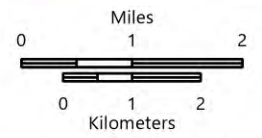
PILOT

Indios
NM-SNF-000091

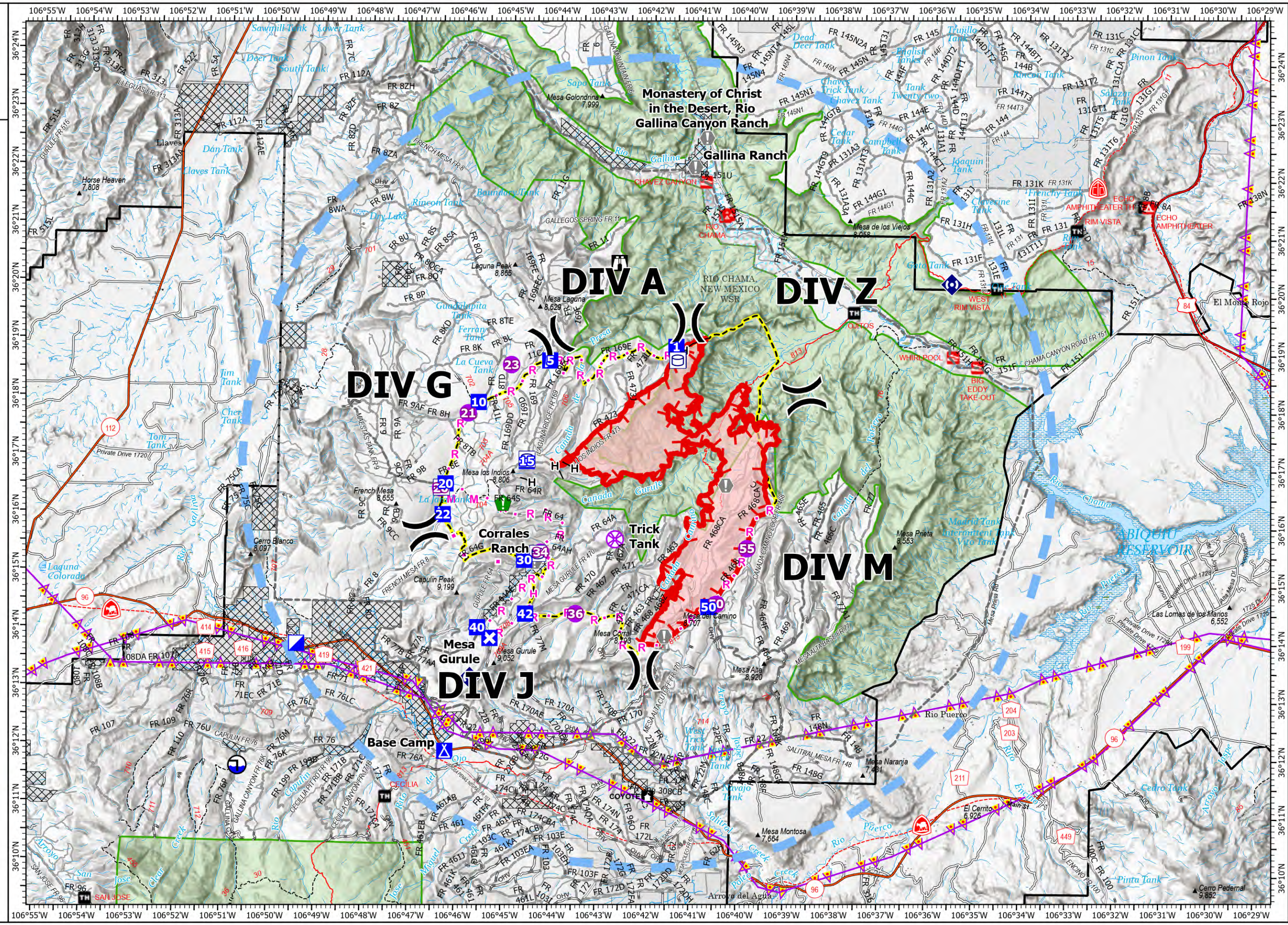
5/29 Day Shift

5,207 acres at 5/28/2024 16:00

- Pump
- Water Tank
- Helispot
- UAS Launch and Recovery
- Division Break
- Incident Command Post
- Drop Point
- Closure
- Camp
- Lookout
- Value at Risk
- Resource Location
- Repeater
- Draft Site
- Completed Hand Line
- Completed Road as Line
- Planned Hand Line
- Planned Mixed Construction Line
- Planned Road as Line
- Proposed Line
- Other
- Temporary Flight Restriction
- Uncontained
- Wildfire Daily Fire Perimeter
- Indios Potential Perimeter
- Private Inholdings
- Gap; Summit
- Ranger District Office
- Campground
- Group Campground
- Trailhead
- Boating Site
- Power Transmission Line
- Primary Highway
- Secondary Highway
- Road, Unspecified
- Road, High Clearance
- Trail
- National Designated Trail
- USFS Proclaimed Forest Grassland
- Wild and Scenic River
- Non Forest
- Forest Service Wilderness Area



1:110,000 - SW Team 4 - 5/28/2024 2016
Acres from IR and GPS
North American 1983 Datum. Lat/Long Grid



PILOT TABLE

Indios
 NM-SNF-000091
 5/29 Day Shift
 5,207 acres at 5/28/2024 16:00

FC Point Type	Label	Comments	Latitude WGS84 DDM	Longitude WGS84 DDM
Camp	Base Camp	Caterer, Showers	36° 11.962' N	106° 46.239' W
Closure		Sensitive resource location	36° 13.922' N	106° 45.322' W
Draft Site		Potential Water Source if approved Good access to the stream for drafting period	36° 11.659' N	106° 50.648' W
Drop Point	1	Coronado High School	36° 19.009' N	106° 41.444' W
Drop Point	10		36° 17.998' N	106° 45.640' W
Drop Point	15		36° 16.995' N	106° 44.593' W
Drop Point	20		36° 16.582' N	106° 46.315' W
Drop Point	22		36° 16.051' N	106° 46.366' W
Drop Point	30		36° 15.290' N	106° 44.612' W
Drop Point	40		36° 14.103' N	106° 45.588' W
Drop Point	42		36° 14.353' N	106° 44.569' W
Drop Point	5		36° 18.735' N	106° 44.129' W
Drop Point	50		36° 14.522' N	106° 40.667' W
Helispot	20		36° 16.507' N	106° 46.419' W
Helispot	21		36° 17.807' N	106° 45.858' W
Helispot	23		36° 18.653' N	106° 44.953' W
Helispot	34		36° 15.425' N	106° 44.263' W
Helispot	36		36° 14.367' N	106° 43.501' W
Helispot	50		36° 14.578' N	106° 40.505' W
Helispot	55		36° 15.548' N	106° 39.869' W
Incident Command Post			36° 13.779' N	106° 49.436' W
Lookout			36° 20.439' N	106° 42.687' W
Repeater		Command 9	36° 20.162' N	106° 35.591' W
Repeater	Encino Lookout	Command 8	36° 07.385' N	106° 33.187' W
Repeater	L1 / Deadman Lookout	Command 7	36° 25.601' N	106° 46.569' W
Repeater	Mesa Gurule	Command 15	36° 13.236' N	106° 45.730' W
Resource Location		Sensitive recourse west side of intersection	36° 14.108' N	106° 45.588' W
Resource Location		Fire sensitive resource on E side of FR64. Needs fuels treatment/protection.	36° 16.266' N	106° 45.083' W
UAS Launch and Recovery			36° 15.672' N	106° 42.684' W
Value at Risk		Interprative sign, prepped/fuels treatment completed.	36° 16.634' N	106° 40.341' W
Value at Risk		Interprative sign, prepped/fuels treatment completed.	36° 14.003' N	106° 41.599' W
Value at Risk		Fire sensitive resource. Fuels prep completed.	36° 14.138' N	106° 42.267' W
Value at Risk		Fire sensitive resource. Fuels prep completed.	36° 14.499' N	106° 40.690' W
Value at Risk	Corrales Ranch		36° 15.258' N	106° 44.387' W
Value at Risk	Gallina Ranch		36° 22.117' N	106° 41.102' W
Value at Risk	Monastery of Christ in the Desert, Rio Gallina Canyon Ranch		36° 22.622' N	106° 40.859' W
Value at Risk	Trick Tank	Trick Tank wood features	36° 15.420' N	106° 42.561' W

