

MEDICAL TRANSPORT GROUND

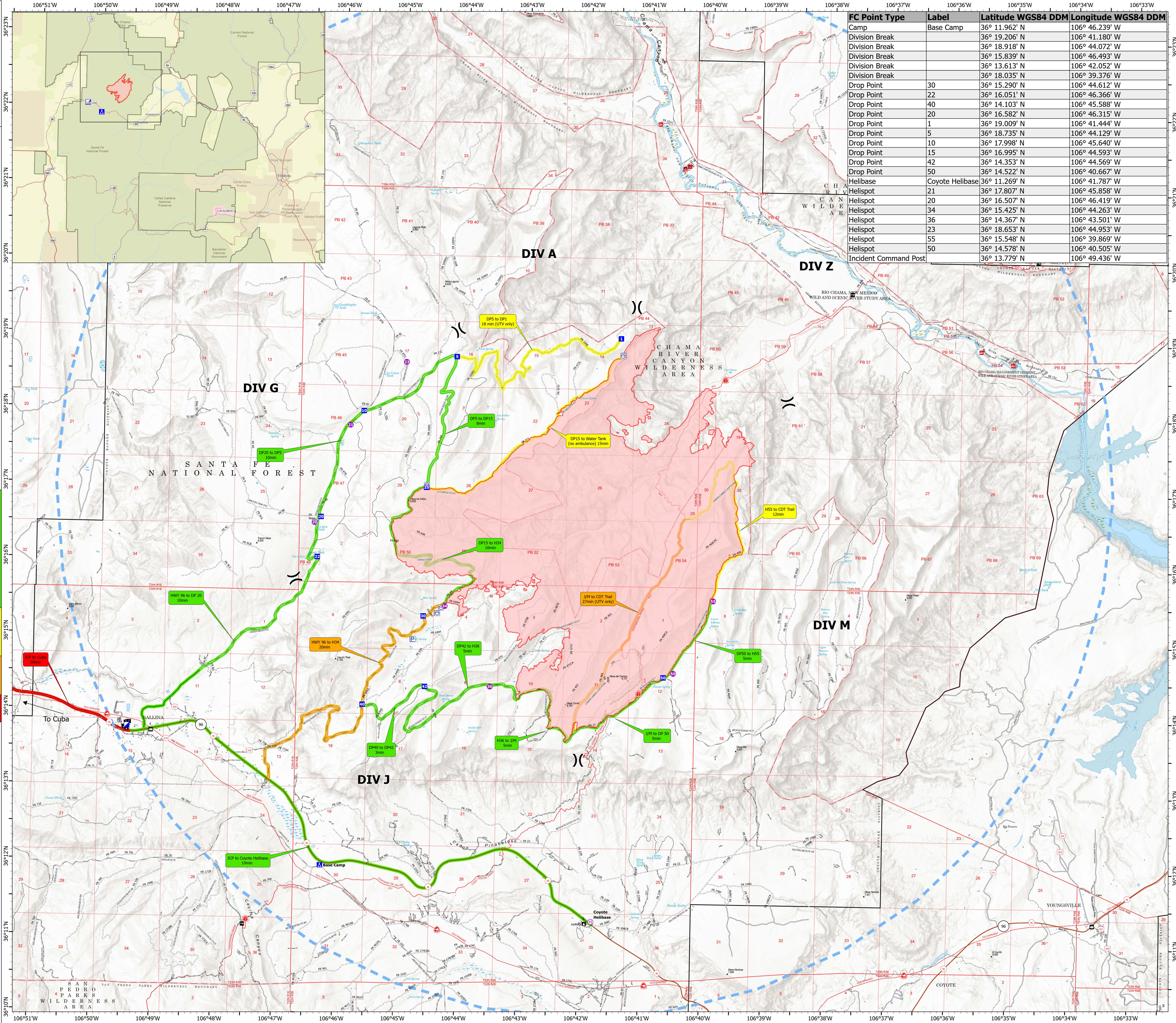
Indios
NM-SNF-000091
6/1 Day Shift

10,262 acres at 5/31/2024 15:00

Legend

Drivetime	0-10min	10-20min	20-30min	30+ min
Road, High Clearance	Road, Closed	Secondary Highway	Road, Unspecified	National Trail
Pump	Water Tank	Helispot	Helibase	Division Break
Incident Command Post	Drop Point	Camp	Temporary Restriction	Other
Wildfire Daily Fire Perimeter	Gap; Summit	Ranger District Office	Campground	Group Campground
Trailhead	Boating Site	Cemetery	School (K - 12)	Post Office
Road, Unspecified	Road, Paved	Road, Gravel	Road, Dirt	

FC Point Type	Label	Latitude WGS84 DDM	Longitude WGS84 DDM
Camp	Base Camp	36° 11.962' N	106° 46.239' W
Division Break		36° 19.206' N	106° 41.180' W
Division Break		36° 18.918' N	106° 44.072' W
Division Break		36° 15.839' N	106° 46.493' W
Division Break		36° 13.613' N	106° 42.052' W
Division Break		36° 18.035' N	106° 39.376' W
Drop Point	30	36° 15.290' N	106° 44.612' W
Drop Point	22	36° 16.051' N	106° 46.366' W
Drop Point	40	36° 14.103' N	106° 45.588' W
Drop Point	20	36° 16.582' N	106° 46.315' W
Drop Point	1	36° 19.009' N	106° 41.444' W
Drop Point	5	36° 18.735' N	106° 44.129' W
Drop Point	10	36° 17.998' N	106° 45.640' W
Drop Point	15	36° 16.995' N	106° 44.593' W
Drop Point	42	36° 14.353' N	106° 44.569' W
Drop Point	50	36° 14.522' N	106° 40.667' W
Helibase	Coyote Helibase	36° 11.269' N	106° 41.787' W
Helispot	21	36° 17.807' N	106° 45.858' W
Helispot	20	36° 16.507' N	106° 46.419' W
Helispot	34	36° 15.425' N	106° 44.263' W
Helispot	36	36° 14.367' N	106° 43.501' W
Helispot	23	36° 18.653' N	106° 44.953' W
Helispot	55	36° 15.548' N	106° 39.869' W
Helispot	50	36° 14.578' N	106° 40.505' W
Incident Command Post		36° 13.779' N	106° 49.436' W



0-10 minutes travel times
-Highway 96 to DP20 - 10 min
-DP5 to DP15 - 8 min
-DP20 to DP5 - 10 min
-DP15 to H34 - 10 min
-DP40 to DP42 - 3 min
-DP42 to H36 - 5 min
-H36 to J/M - 5 min
-JM to DP - 5 min
-DP50 to H55 - 5min
-ICP to Coyote Helibase - 10 min

10-20 minutes travel times
-DP5 to DP1 (UTV only) - 18 min
-DP15 to Water Tank (no ambulance) - 15 min
-DP55 to CDT Trail - 12 min

20-30 minutes travel times
-Highway 96 to H34 - 20 min
-J/M to CDT Trail (UTV only) - 27 min

30+ minutes travel times
-ICP to Cuba - 30 min