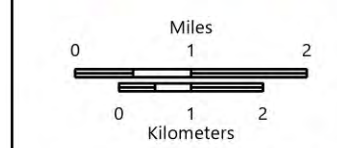


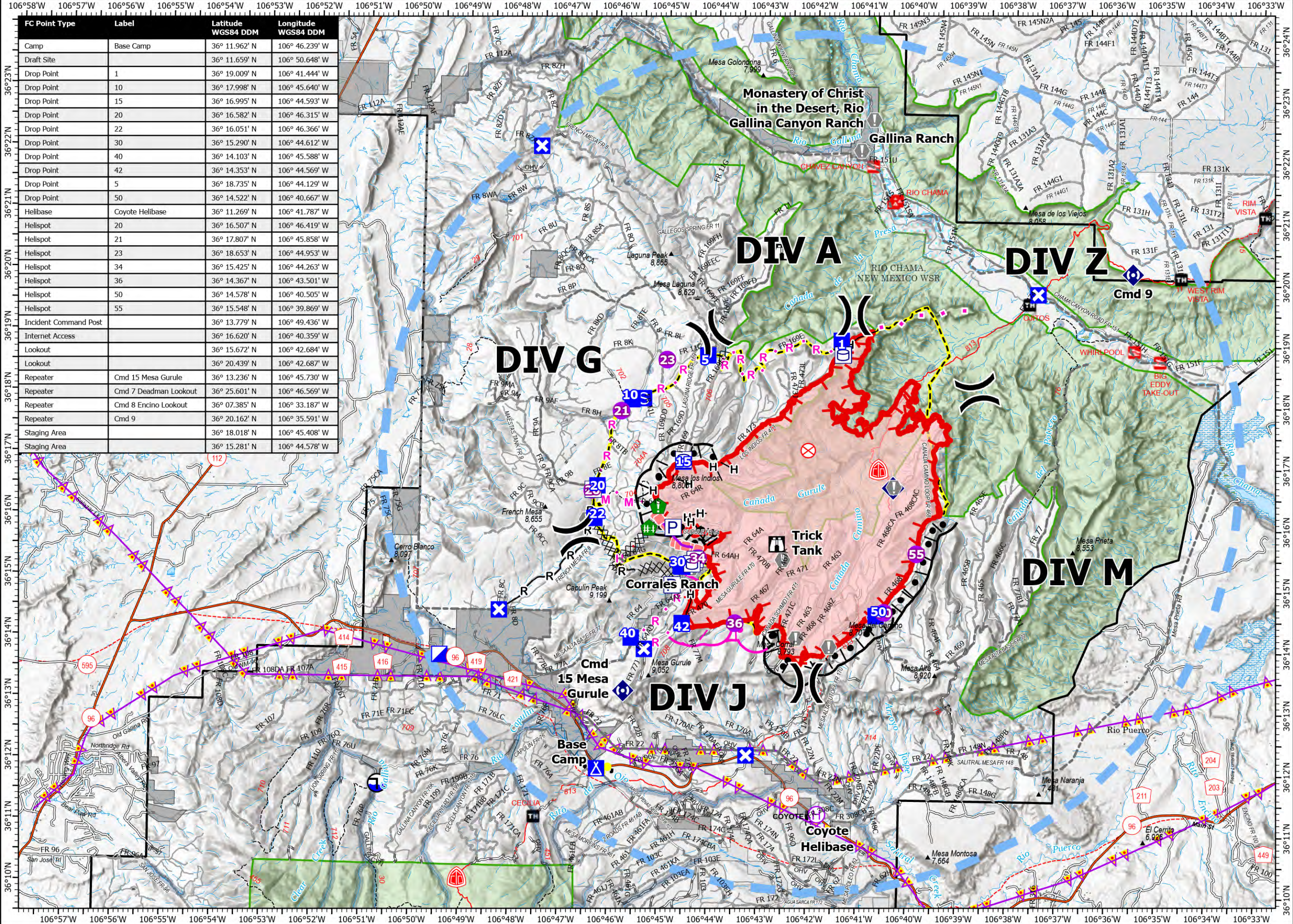
PILOT

Indios
 NM-SNF-000091
 6/2 Day Shift
 11,413 acres at 6/1/2024 13:00

- Pump
- Water Tank
- Helispot
- Helibase
- Division Break
- Incident Command Post
- Drop Point
- Closure
- Camp
- Staging Area
- Lookout
- Fire Origin
- Value at Risk
- Resource Location
- Fence - Cut/Damaged
- Internet Access
- Repeater
- Draft Site
- Completed Burnout
- Completed Dozer Line
- Completed Hand Line
- Completed Road as Line
- Planned Burnout
- Planned Hand Line
- Planned Mixed Construction Line
- Planned Road as Line
- Proposed Line
- Fence
- Highlighted Feature
- Other
- Retardant Drop
- Temporary Flight Restriction
- Uncontained
- Other
- Wildfire Daily Fire Perimeter
- Indios Potential Perimeter
- Ranger District Office
- Power Transmission Line
- Secondary Highway
- Road, Unspecified
- Road, High Clearance
- Trail
- National Designated Trail
- USFS Proclaimed Forest Grassland
- Wild and Scenic River
- Forest Service Wilderness Area
- Private Inholdings
- Fire Retardant Avoidance Area



1:105,000 - SW Team 4 - 6/1/2024 1928
 Acres from IR and GPS
 North American 1983 Datum, Lat/Long Grid



FC Point Type	Label	Latitude WGS84 DDM	Longitude WGS84 DDM
Camp	Base Camp	36° 11.962' N	106° 46.239' W
Draft Site		36° 11.659' N	106° 50.648' W
Drop Point	1	36° 19.009' N	106° 41.444' W
Drop Point	10	36° 17.998' N	106° 45.640' W
Drop Point	15	36° 16.995' N	106° 44.593' W
Drop Point	20	36° 16.582' N	106° 46.315' W
Drop Point	22	36° 16.051' N	106° 46.366' W
Drop Point	30	36° 15.290' N	106° 44.612' W
Drop Point	40	36° 14.103' N	106° 45.588' W
Drop Point	42	36° 14.353' N	106° 44.569' W
Drop Point	5	36° 18.735' N	106° 44.129' W
Drop Point	50	36° 14.522' N	106° 40.667' W
Helibase	Coyote Helibase	36° 11.269' N	106° 41.787' W
Helispot	20	36° 16.507' N	106° 46.419' W
Helispot	21	36° 17.807' N	106° 45.858' W
Helispot	23	36° 18.653' N	106° 44.953' W
Helispot	34	36° 15.425' N	106° 44.263' W
Helispot	36	36° 14.367' N	106° 43.501' W
Helispot	50	36° 14.578' N	106° 40.505' W
Helispot	55	36° 15.548' N	106° 39.869' W
Incident Command Post		36° 13.779' N	106° 49.436' W
Internet Access		36° 16.620' N	106° 40.359' W
Lookout		36° 15.672' N	106° 42.684' W
Lookout		36° 20.439' N	106° 42.687' W
Repeater	Cmd 15 Mesa Gurule	36° 13.236' N	106° 45.730' W
Repeater	Cmd 7 Deadman Lookout	36° 25.601' N	106° 46.569' W
Repeater	Cmd 8 Encino Lookout	36° 07.385' N	106° 33.187' W
Repeater	Cmd 9	36° 20.162' N	106° 35.591' W
Staging Area		36° 18.018' N	106° 45.408' W
Staging Area		36° 15.281' N	106° 44.578' W