

MEDICAL TRANSPORT GROUND

Indios
NM-SNF-000091
6/9 Day Shift

11,500 acres at 6/2/2024 22:00

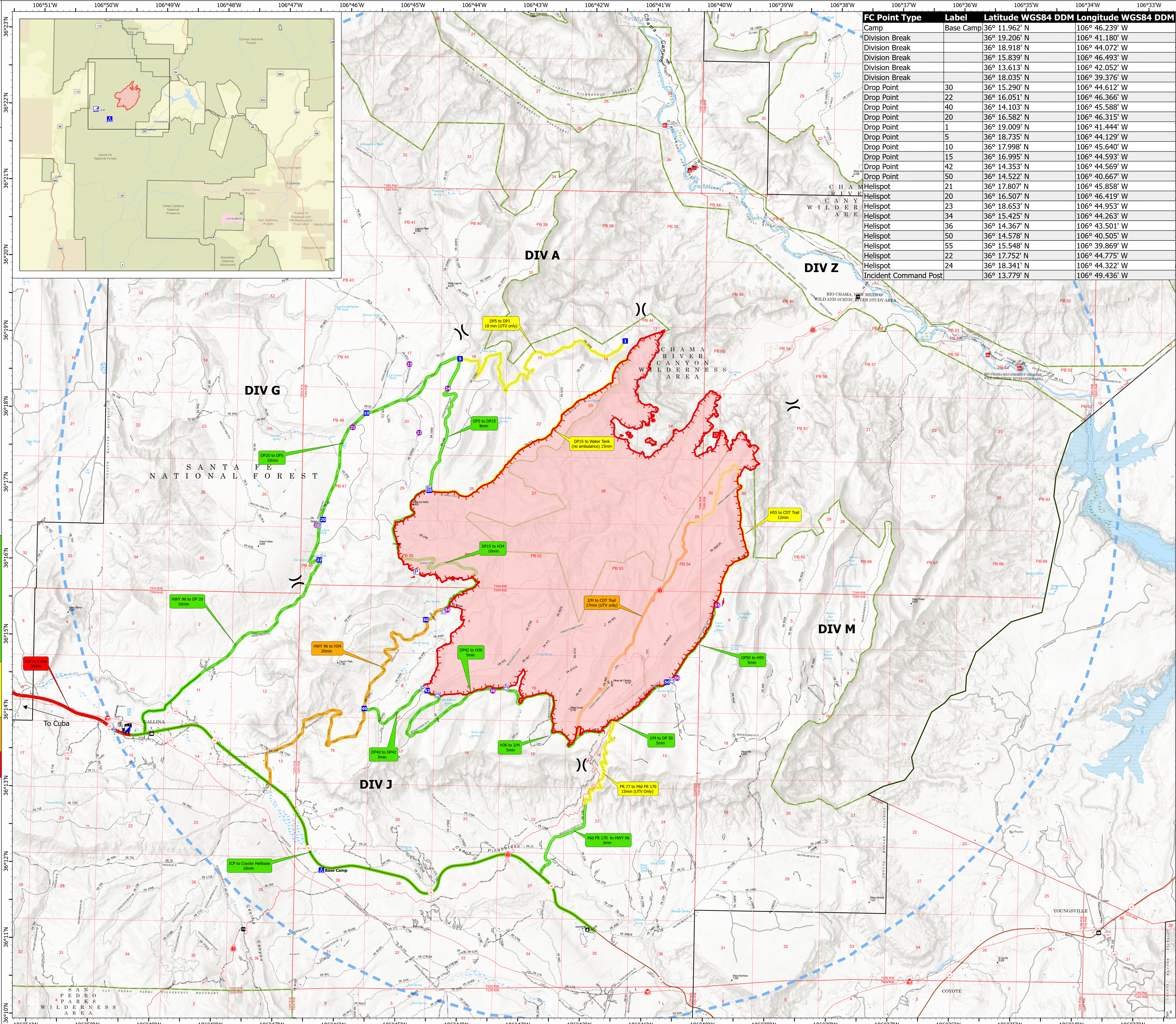
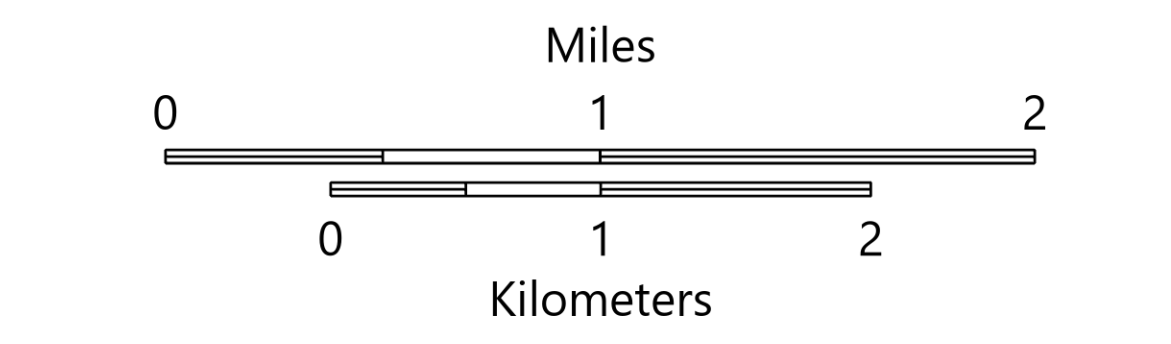
- Drivetime**
- 0-10 Minutes
 - 10-20 Minutes
 - 20-30min
 - 30+ Minutes
- Pump
 - Water Tank
 - Helispot
 - Division Break
 - Incident Command Post
 - Drop Point
 - Camp
 - Temporary Flight Restriction
 - Contained
 - Uncontained
 - Wildfire Daily Fire Perimeter
 - Gap; Summit
 - Ranger District Office
 - Campground
 - Group Campground
 - Trailhead
 - Boating Site
 - Cemetery
 - School (K - 12)
 - Post Office
 - Secondary Highway
 - Road, Unspecified
 - Trail
 - National Designated Trail
 - USFS Wild Scenic River
 - Township
 - Section
 - Protracted Block Section
 - USFS Wilderness
 - USFS Ranger District
 - USFS Administrative Forest

- 0-10 Minute Travel Times**
- Highway 96 to DP20 - 10 min
 - DP5 to DP15 - 8 min
 - DP20 to DP5 - 10 min
 - DP15 to H34 - 10 min
 - DP40 to DP42 - 3 min
 - DP42 to H36 - 5 min
 - H36 to J/M - 5 min
 - J/M to DP - 5 min
 - DP50 to H55 - 5 min
 - ICP to Coyote Helibase - 10 min
 - Mid FR 170 to Highway 96 - 3 min

- 10-20 Minute Travel Times**
- DP5 to DP1 (UTV only) - 18 min
 - DP15 to Water Tank (no ambulance) - 15 min
 - DP55 to CDT Trail - 12 min
 - FR 77 to Mid FR 170 (UTV Only) - 15 min

- 20-30 Minutes Travel Times**
- Highway 96 to H34 - 20 min
 - J/M to CDT Trail (UTV only) - 27 min

- 30+ Minute Travel Times**
- ICP to Cuba - 30 min



FC Point Type	Label	Latitude WGS84 DDM	Longitude WGS84 DDM
Camp	Base Camp	36° 11.962' N	106° 46.239' W
Division Break		36° 19.206' N	106° 41.180' W
Division Break		36° 18.918' N	106° 44.072' W
Division Break		36° 15.839' N	106° 46.493' W
Division Break		36° 13.613' N	106° 42.052' W
Division Break		36° 18.035' N	106° 39.376' W
Drop Point	30	36° 15.290' N	106° 44.612' W
Drop Point	22	36° 16.051' N	106° 46.366' W
Drop Point	40	36° 14.103' N	106° 45.588' W
Drop Point	20	36° 16.582' N	106° 46.315' W
Drop Point	1	36° 19.009' N	106° 41.444' W
Drop Point	5	36° 18.735' N	106° 44.129' W
Drop Point	10	36° 17.998' N	106° 45.640' W
Drop Point	15	36° 16.995' N	106° 44.593' W
Drop Point	42	36° 14.353' N	106° 44.569' W
Drop Point	50	36° 14.522' N	106° 40.667' W
Helispot	21	36° 17.807' N	106° 45.858' W
Helispot	20	36° 16.507' N	106° 46.419' W
Helispot	23	36° 18.653' N	106° 44.953' W
Helispot	34	36° 15.425' N	106° 44.263' W
Helispot	36	36° 14.367' N	106° 43.501' W
Helispot	50	36° 14.578' N	106° 40.505' W
Helispot	55	36° 15.548' N	106° 39.869' W
Helispot	22	36° 17.752' N	106° 44.775' W
Helispot	24	36° 18.341' N	106° 44.322' W
Incident Command Post		36° 13.779' N	106° 49.436' W