

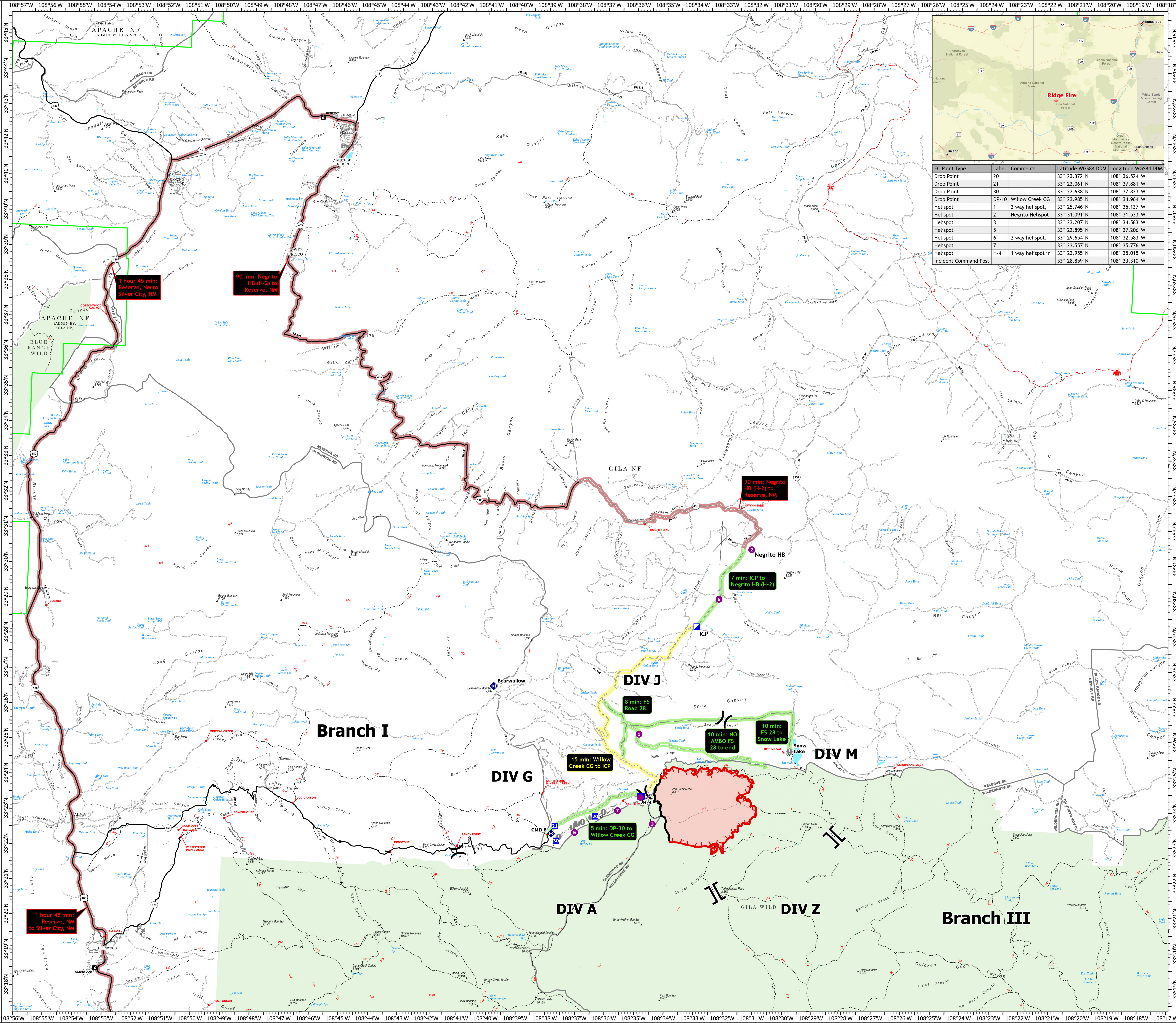
MEDICAL TRANSPORTATION GROUND Ridge NMGNF-000318 7/19/24 Day Shift 4,257 acres at 7/18/24 01:23

Evacuation Route Times

- 0-10 Minutes
- 10-20 Minutes
- 20-30 Minutes
- 31+ Minutes
- Helispot
- | Division Break
- | Branch Break
- Incident Command Post
- Drop Point
- Camp
- Value at Risk
- ◆ Repeater
- Contained
- Uncontained
- Wildfire Daily Fire Perimeter
- FS Wilderness Boundary

Category	Time	Route
0-10 Min	5 Minutes	DP-30 to Willow Creek CG
0-10 Min	7 Minutes	ICP to Negrito HB (H-2)
0-10 Min	8 Minutes	8 min: FS Road 28
0-10 Min	10 Minutes	10 min: FS 28 to Snow Lake
0-10 Min	10 Minutes	10 min: NO AMBO FS 28 to end
10-20 Min	15 Minutes	Willow Creek CG to ICP
31+ Min	90 Minutes	Negrito HB (H-2) to Reserve, NM
31+ Min	1 Hour 45 Minutes	Reserve, NM to Silver City, NM

FC Point Type	Label	Comments	Latitude WGS84 DDM	Longitude WGS84 DDM
Drop Point	20		33° 23.372' N	108° 36.524' W
Drop Point	21		33° 23.061' N	108° 37.881' W
Drop Point	30		33° 22.638' N	108° 37.823' W
Drop Point	DP-10	Willow Creek CG	33° 23.985' N	108° 34.964' W
Helispot	1	2 way helispot,	33° 25.746' N	108° 35.137' W
Helispot	2	Negrito Helispot	33° 31.091' N	108° 31.533' W
Helispot	3		33° 23.207' N	108° 34.583' W
Helispot	5		33° 22.895' N	108° 37.206' W
Helispot	6	2 way helispot,	33° 29.654' N	108° 32.583' W
Helispot	7		33° 23.557' N	108° 35.776' W
Helispot	H-4	1 way helispot in	33° 23.955' N	108° 35.015' W
Incident Command Post			33° 28.859' N	108° 33.310' W



1 hour 45 min: Reserve, NM to Silver City, NM

90 min: Negrito HB (H-2) to Reserve, NM

90 min: Negrito HB (H-2) to Reserve, NM

7 min: ICP to Negrito HB (H-2)

15 min: Willow Creek CG to ICP

8 min: FS Road 28

10 min: NO AMBO FS 28 to end

10 min: FS 28 to Snow Lake

5 min: DP-30 to Willow Creek CG

1 hour 45 min: Reserve, NM to Silver City, NM

