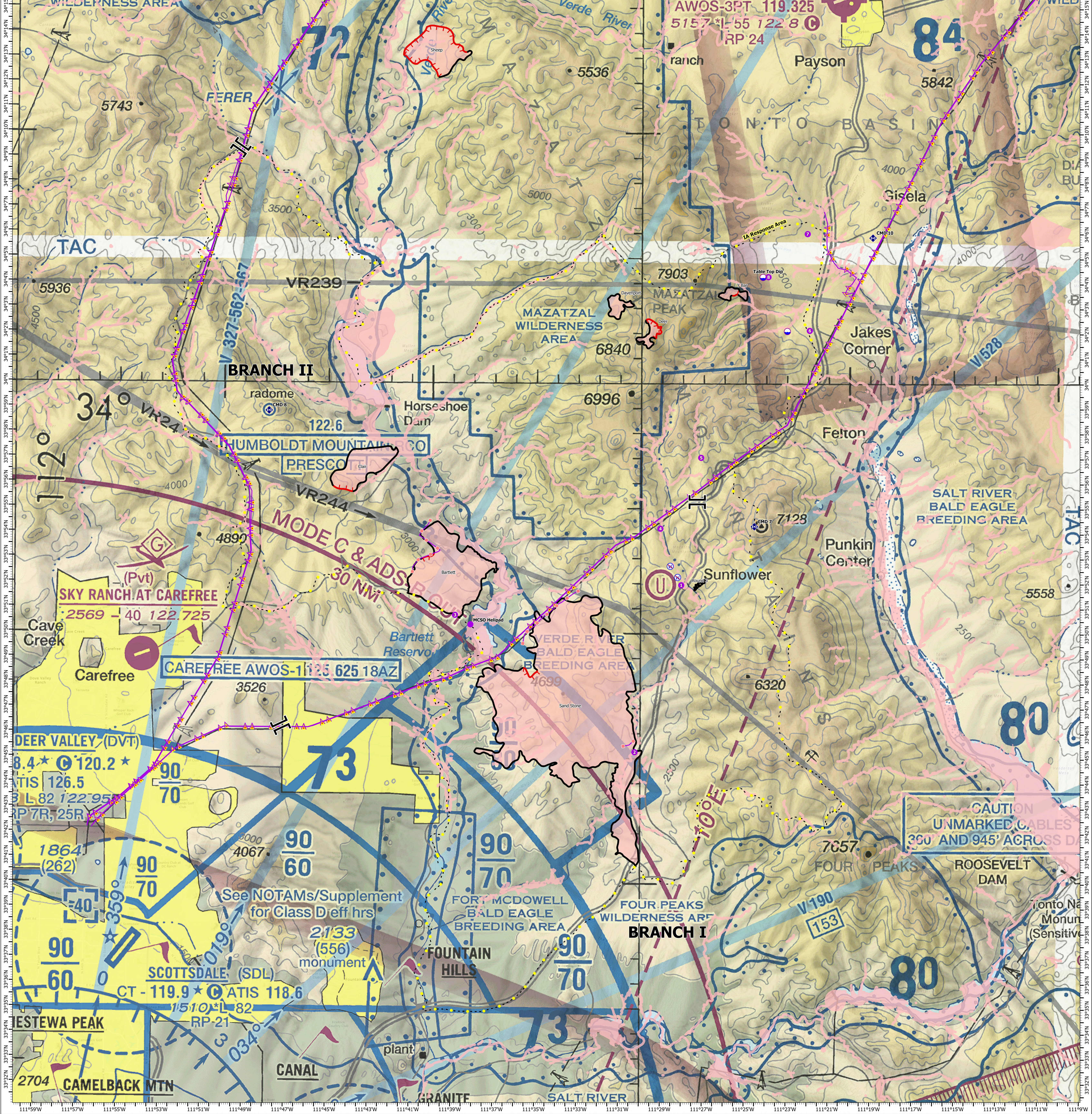


Incident Name	FC Point Type	Label	Comments	Latitude	Longitude
Bartlett	Helispot	MCSO Helipad	MCSO Helipad	33° 50.341' N	111° 38.152' W
Deer	Dip Site		Potential Dip site for Deer Fire if tanks full. Needs Scouting.	34° 02.106' N	111° 23.017' W
Deer	Helispot	6	A DOT Rest Area HWY 87	34° 02.135' N	111° 21.943' W
Deer	Helispot	7	NEEDS dust abatement, T2 T3 if needed	34° 06.004' N	111° 22.060' W
Sand Stone	Helispot	1	Sunflower: Need gate code to access under bridge from sunflower	33° 51.944' N	111° 28.060' W
Sand Stone	Helispot	2	Concrete Pad for helispot. Type 3	33° 45.264' N	111° 30.263' W
Sand Stone	Helispot	3		33° 50.716' N	111° 38.890' W
Sand Stone	Helispot	4		33° 54.206' N	111° 29.070' W
Sand Stone	Helispot	5		33° 57.041' N	111° 27.131' W
Sand Stone	Repeater	CMD 7	CMD 7 & Link 6	33° 54.301' N	111° 24.569' W
Sand Stone	Repeater	CMD 8	Humboldt	33° 58.858' N	111° 47.870' W
Sand Stone	Repeater	CMD 9		34° 17.256' N	111° 11.560' W
Sand Stone	Restricted Water Source			33° 52.256' N	111° 28.238' W
Sand Stone	Restricted Water Source			33° 52.700' N	111° 28.591' W
Y Bar	Dip Site	Table Top Dip		34° 04.267' N	111° 24.193' W
Y Bar	Helispot	8		34° 04.280' N	111° 23.934' W
Y Bar	Repeater	CMD 10	CMD 10	34° 05.851' N	111° 18.913' W



AIR OPS

8/13/2024 Day Shift

Sand Stone AZ-TNF-001300 27,390 acres at 7/31/2024 10:40 AM	Deer AZ-TNF-001181 378 acres at 8/6/2024 12:30 PM	Davenport AZ-TNF-001200 447 acres at 7/22/20024 11:00 AM	Y Bar AZ-TNF-001397 297 acres at 8/6/2024 11:00 AM
Clair AZ-TNF-001404 2,170 acres at 8/6/2024 10:45 AM	Bartlett AZ-TNF-001400 6,161 acres at 8/6/2024 4:30 PM	Sheep AZ-TNF-001412 2,483 acres at 8/7/2024 9:30 AM	

1:90,000 - SW Team 4 - 8/12/2024 1331
Acres from GPS North American 1983 Datum. Lat/Long Grid

<ul style="list-style-type: none"> ● Helispot Branch Break ◆ Repeater ● Dip Site ⊗ Restricted Water Source 	<ul style="list-style-type: none"> --- Highlighted Feature --- Other ▲ Aerial Hazard --- Retardant Drop --- Contained 	<ul style="list-style-type: none"> --- Uncontained --- Wildfire Daily Fire Perimeter --- SWA Retardant Avoidance
--	---	--

Miles
0 1 2

Kilometers
0 1 2