

Operations

6/17/2024 Day

South Fork

NM-MEA-000382

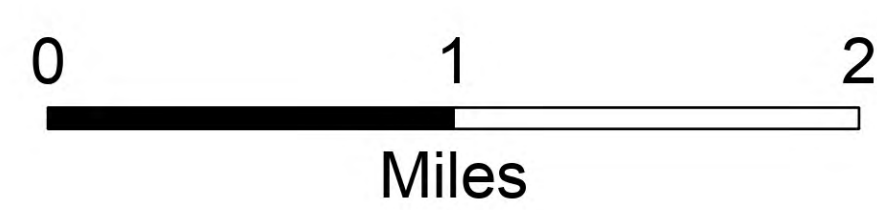
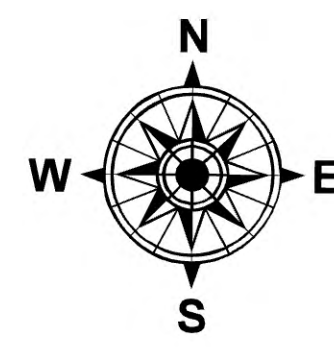
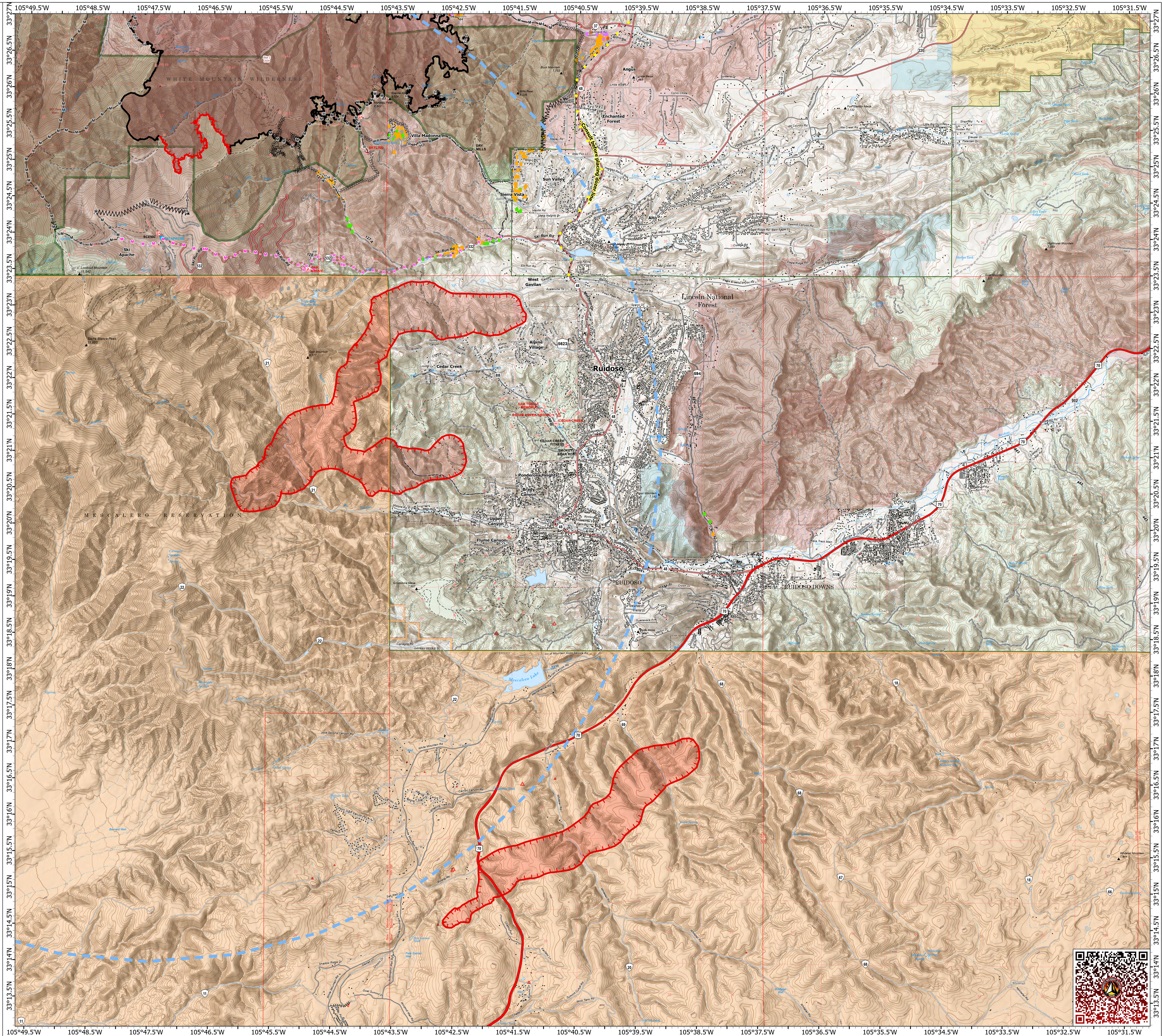
3,380 acres at 6/17/2024 1912hr

Salt

NM-MEA-000385

1,750 acres at 6/17/2024 1912hr

- Structure
- Structure Triage
 - Defensible - Stand Alone
 - Defensible - Prep and Hold
 - Non-Defensible - Prep and Leave
 - Non-Defensible - Rescue Drive-By
 - Unknown
- Completed Dozer Line
- Completed Fuel Break
- Completed Hand Line
- Completed Mixed Construction Line
- Completed Road as Line
- Planned Mixed Construction Line
- Planned Road as Line
- Access Route
- Highlighted Feature
- Temporary Flight Restriction
- Contained
- Uncontained
- Wildfire Daily Fire Perimeter
- Primary Highway
- Secondary Highway
- Secondary Paved
- Secondary Dirt
- Paved
- Gravel Road
- Dirt Road
- Unimproved Road
- Forest Service Roads Closed
- FS Wilderness Boundary
- Forest Service Land
- Bureau of Land Management Lands
- State Lands
- USFS Historic Fire Perimeters
 - 2011-2015
 - 2021
 - 2022
 - Blue 2 (2024)



1:30,000 | RIST 2024 | 6/17/2024 1819
Acres Estimated from FireGuard
North American 1983 Datum, LatLong Grid

