

# Briefing

6/20/2024 Day  
South Fork

NM-MEA-000382

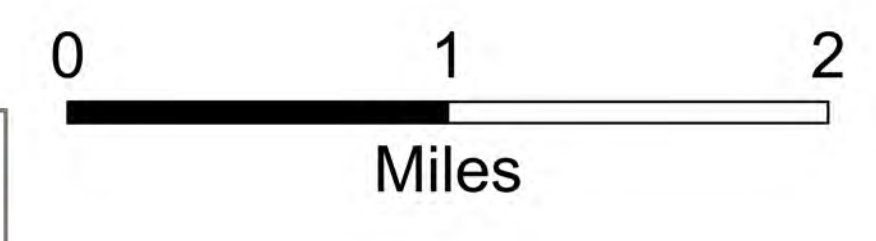
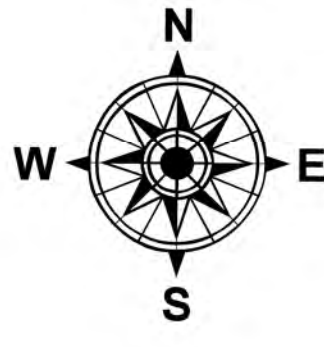
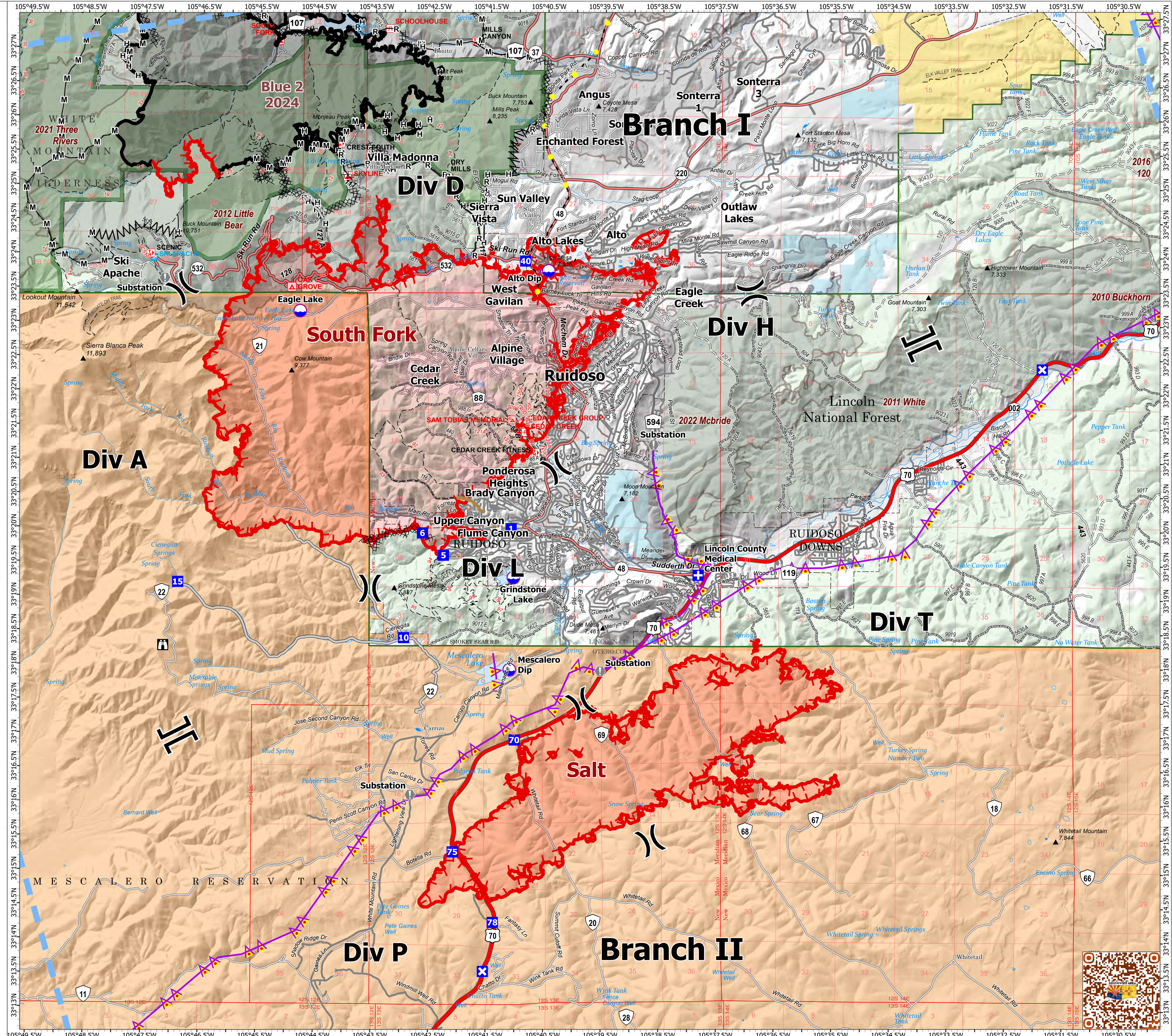
16,335 acres at 6/18/2024 2359hr

Salt

NM-MEA-000385

7,071 acres at 6/18/2024 2359hr

- ⌘ Division Break
- ⌘ Branch Break
- ⊕ Medical
- ⬇ Drop Point
- ⊠ Closure
- ⦿ Lookout
- ⦿ Value at Risk
- ⦿ Dip Site
- ⊗ Completed Dozer Line
- ⊗ Completed Fuel Break
- ⊗ Completed Hand Line
- ⊗ Completed Mixed Construction Line
- ⊗ Completed Road as Line
- Access Route
- Highlighted Feature
- Road Repair
- Aerial Hazard
- Temporary Flight Restriction
- Contained
- Uncontained
- Wildfire Daily Fire Perimeter
- FS Wilderness Boundary
- Forest Service Land
- Bureau of Land Management Lands
- State Lands
- USFS Historic Fire Perimeters
- Blue 2 (2024)
- Primary Highway
- Secondary Highway
- Secondary Paved
- Secondary Dirt
- Gap/Roads GTAC Pedestrian Path
- Trail
- Trail
- Paved
- Gravel Road
- Dirt Road
- Unimproved Road
- Forest Service Roads Closed



1:32,000 | SWIMT5 GISS | 6/19/2024 2138  
Acres from IR  
North American 1983 Datum, Lat/Long Grid

