

Medical Transportation

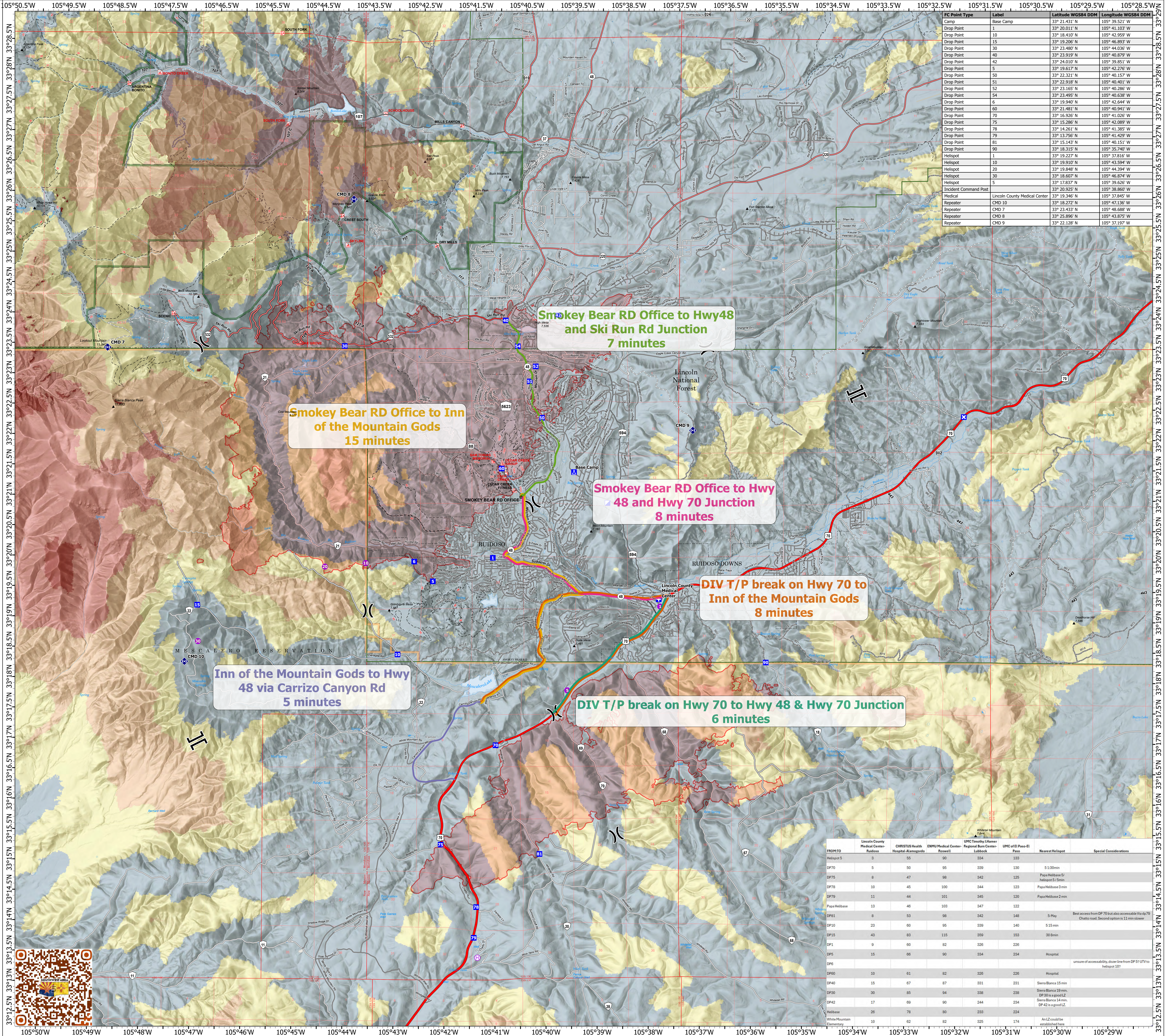
6/22/2024 Day
South Fork
NM-MEA-000382

16,632 acres at 6/21/2024 1900hr

Salt
NM-MEA-000385

7,652 acres at 6/21/2024 1900hr

- Helispot
- ⊕ Helibase
- ⌘ Division Break
- ⌘ Branch Break
- ⊕ Medical
- ▣ Incident Command Post
- ▣ Drop Point
- ⊗ Closure
- ⊕ Camp
- ⊕ Repeater
- Access Route
- ▭ Wildfire Daily Fire Perimeter
- ⊕ Ranger District Office
- Primary Highway
- Secondary Highway
- Secondary Paved
- Secondary Dirt
- ~ Paved
- ~ Gravel Road
- ~ Dirt Road
- ~ Unimproved Road
- ~ Forest Service Roads Closed
- ▭ FS Wilderness Boundary
- ▭ Blue 2 (2024)
- Ground Evacuation Time
- 0 to 1 hours
- 1 to 2 hours
- 2 to 4 hours
- 4 to 6 hours
- More than 6 hours



FC Point Type	Label	Latitude WGS84 DDM	Longitude WGS84 DDM
Camp	Base Camp	33° 21.431' N	105° 39.521' W
Drop Point	1	33° 20.011' N	105° 41.103' W
Drop Point	10	33° 18.410' N	105° 42.959' W
Drop Point	15	33° 19.286' N	105° 46.893' W
Drop Point	30	33° 23.480' N	105° 44.036' W
Drop Point	40	33° 23.919' N	105° 40.879' W
Drop Point	42	33° 24.010' N	105° 39.851' W
Drop Point	5	33° 19.617' N	105° 42.276' W
Drop Point	50	33° 22.321' N	105° 40.157' W
Drop Point	51	33° 22.318' N	105° 40.401' W
Drop Point	52	33° 23.165' N	105° 40.286' W
Drop Point	54	33° 23.495' N	105° 40.638' W
Drop Point	6	33° 19.940' N	105° 42.644' W
Drop Point	60	33° 21.481' N	105° 40.941' W
Drop Point	70	33° 16.768' N	105° 41.026' W
Drop Point	75	33° 15.286' N	105° 42.089' W
Drop Point	78	33° 14.261' N	105° 41.385' W
Drop Point	79	33° 13.756' N	105° 41.429' W
Drop Point	81	33° 15.143' N	105° 40.151' W
Drop Point	90	33° 18.315' N	105° 35.740' W
Helispot	1	33° 19.327' N	105° 39.843' W
Helispot	10	33° 19.910' N	105° 43.594' W
Helispot	20	33° 19.848' N	105° 44.394' W
Helispot	30	33° 18.607' N	105° 46.874' W
Helispot	5	33° 17.837' N	105° 39.626' W
Incident Command Post		33° 20.925' N	105° 38.860' W
Medical Repeater	Lincoln County Medical Center	33° 19.940' N	105° 47.136' W
Medical Repeater	CMD 10	33° 18.272' N	105° 47.136' W
Medical Repeater	CMD 7	33° 23.433' N	105° 48.688' W
Medical Repeater	CMD 8	33° 25.896' N	105° 43.875' W
Medical Repeater	CMD 9	33° 22.128' N	105° 37.197' W

Smokey Bear RD Office to Hwy48 and Ski Run Rd Junction
7 minutes

Smokey Bear RD Office to Inn of the Mountain Gods
15 minutes

Smokey Bear RD Office to Hwy 48 and Hwy 70 Junction
8 minutes

DIV T/P break on Hwy 70 to Inn of the Mountain Gods
8 minutes

Inn of the Mountain Gods to Hwy 48 via Carrizo Canyon Rd
5 minutes

DIV T/P break on Hwy 70 to Hwy 48 & Hwy 70 Junction
6 minutes

FRONTID	Lincoln County Medical Center-Ruidoso	CHRISTUS Health Hospital-Altamogordo	ENMU Medical Center-Roseville	UMC Timothy H. Jones Regional Burn Center-Lubbock	UMC of El Paso-El Paso	Nearest Helispot	Special Considerations
Helispot 3	3	55	90	334	130		
DP70	5	50	95	339	130		5-10min
DP75	8	47	98	342	125	Papa Helibase 31	
DP78	10	45	100	344	123	Papa Helibase 3 min	
DP79	11	44	101	345	120	Papa Helibase 2 min	
Papa Helibase	13	46	103	347	122		
DP81	8	53	98	342	148		5 May Best access from DP 70 but also accessible via DP9 Chato road. Second option is 11 min slower
DP10	23	60	95	339	140		5-15 min
DP15	43	83	115	369	153		30-8min
DP1	9	60	82	326	226		
DP5	15	66	90	334	234		Hospital
DP6							insurance of accessibility, door line from DP 51 UTV to helispot 10?
DP90	10	61	82	326	226		Hospital
DP40	15	67	87	331	231		Sierra Blanca 15 min
DP50	30	85	94	338	238		Sierra Blanca 18 min, DP 50 is a good LZ
DP42	17	69	90	344	234		Sierra Blanca 14 min, DP 42 is a good LZ
Helibase	26	78	80	323	224		An LZ could be established here
White Mountain Elementary	10	62	82	325	174		

