

Pilot

6/22/2024 Day
South Fork
NM-MEA-000382

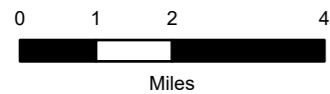
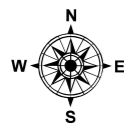
16,632 acres at 6/21/2024 1900hr

Salt

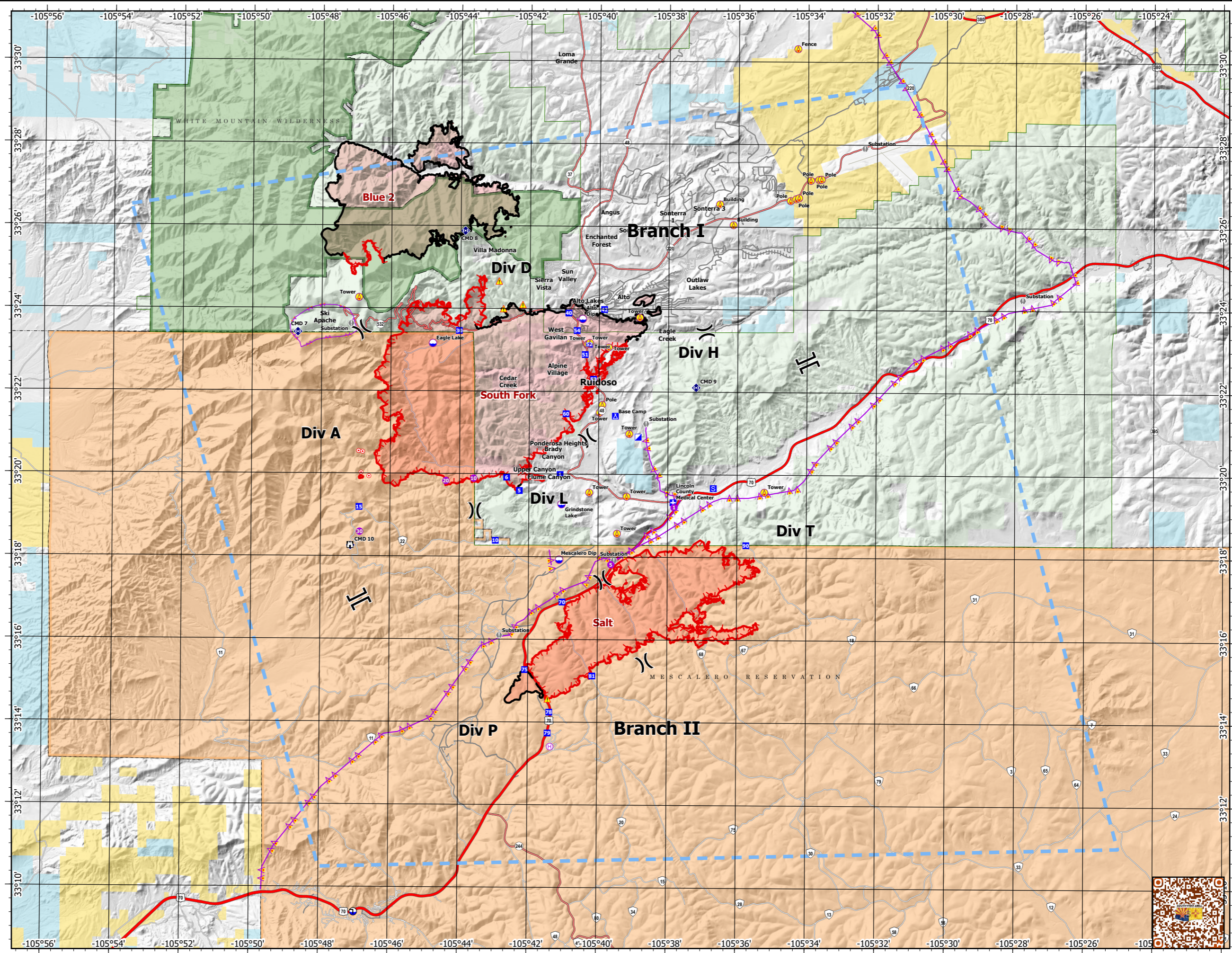
NM-MEA-000385

7,652 acres at 6/21/2024 1900hr

- Aerial Hazard
- Helispot
- Helibase
- Division Break
- Branch Break
- Medical
- Incident Command Post
- Drop Point
- Camp
- Staging Area
- Lookout
- Hot Spot - Spot Fire
- Value at Risk
- Repeater
- Hazard
- Dip Site
- Draft Site
- Aerial Hazard
- Temporary Flight Restriction
- Contained
- Uncontained
- Wildfire Daily Fire Perimeter
- FS Wilderness Boundary
- Forest Service Land
- BLM
- State Lands
- Primary Highway
- Secondary Highway
- Secondary Paved
- State Road (Dirt)
- Secondary Dirt



1:160,000 | SWIMT5 GISS | 6/21/2024 2122
Acres from Mixed Methods
North American 1983 Datum. Lat/Long Grid



Incident Name	FC Point Type	Label	Comments	Latitude WGS84 DDM	Longitude WGS84 DDM
Salt	Drop Point	70		33° 16.926' N	105° 41.026' W
Salt	Drop Point	75		33° 15.286' N	105° 42.089' W
Salt	Drop Point	78		33° 14.261' N	105° 41.385' W
Salt	Drop Point	79		33° 13.756' N	105° 41.429' W
Salt	Drop Point	81		33° 15.143' N	105° 40.151' W
Salt	Drop Point	90		33° 18.315' N	105° 35.740' W
Salt	Hazard		Down power lines	33° 14.582' N	105° 41.430' W
Salt	Helibase		BIA Mescalero Helibase - 3 pads, type 2 Approved	33° 13.428' N	105° 41.355' W
Salt	Helispot	5	Approved type 3	33° 17.837' N	105° 39.626' W
Salt	Staging Area		Ruidoso downs. Large enough for many low boys	33° 19.692' N	105° 36.687' W
South Fork	Aerial Hazard	Building		33° 26.067' N	105° 36.144' W
South Fork	Aerial Hazard	Building		33° 26.568' N	105° 36.536' W
South Fork	Aerial Hazard	Fence		33° 30.335' N	105° 34.303' W
South Fork	Aerial Hazard	Pole		33° 21.700' N	105° 39.900' W
South Fork	Aerial Hazard	Pole		33° 26.656' N	105° 34.498' W
South Fork	Aerial Hazard	Pole		33° 26.703' N	105° 34.339' W
South Fork	Aerial Hazard	Pole		33° 26.727' N	105° 34.258' W
South Fork	Aerial Hazard	Pole		33° 27.151' N	105° 33.919' W
South Fork	Aerial Hazard	Pole		33° 27.172' N	105° 33.679' W
South Fork	Aerial Hazard	Pole		33° 27.177' N	105° 33.608' W
South Fork	Aerial Hazard	Tower		33° 18.587' N	105° 39.455' W
South Fork	Aerial Hazard	Tower		33° 19.483' N	105° 39.183' W
South Fork	Aerial Hazard	Tower		33° 19.578' N	105° 40.262' W
South Fork	Aerial Hazard	Tower		33° 19.600' N	105° 35.217' W
South Fork	Aerial Hazard	Tower		33° 21.000' N	105° 39.117' W
South Fork	Aerial Hazard	Tower		33° 21.516' N	105° 39.972' W
South Fork	Aerial Hazard	Tower		33° 23.093' N	105° 39.722' W
South Fork	Aerial Hazard	Tower		33° 23.167' N	105° 40.333' W
South Fork	Aerial Hazard	Tower		33° 23.183' N	105° 40.283' W
South Fork	Aerial Hazard	Tower		33° 23.200' N	105° 40.267' W
South Fork	Aerial Hazard	Tower		33° 23.818' N	105° 38.831' W
South Fork	Aerial Hazard	Tower		33° 24.275' N	105° 46.930' W
South Fork	Aerial Hazard	Tower		33° 32.889' N	105° 36.137' W
South Fork	Camp	Base Camp		33° 21.431' N	105° 39.521' W
South Fork	Dip Site	Alto Dip	Hazard power lines on east and west ends	33° 23.777' N	105° 40.478' W
South Fork	Dip Site	Eagle Lake	Ownership MEA	33° 23.173' N	105° 44.795' W
South Fork	Dip Site	Grindstone Lake		33° 19.293' N	105° 41.057' W
South Fork	Dip Site	Mescalero Dip	Hazards: Zip line across the lake. Ownership MEA	33° 17.952' N	105° 41.119' W
South Fork	Draft Site		Overhead stand pipe	33° 09.410' N	105° 46.981' W
South Fork	Drop Point	1		33° 20.011' N	105° 41.103' W
South Fork	Drop Point	10		33° 18.410' N	105° 42.959' W
South Fork	Drop Point	15	Parking/ Staging	33° 19.206' N	105° 46.893' W
South Fork	Drop Point	30	Division Delta	33° 23.480' N	105° 44.036' W
South Fork	Drop Point	40	DIVS DELTA SHELL STATION HIGHWAY 48 and Ski Run RD	33° 23.919' N	105° 40.879' W
South Fork	Drop Point	42	Division Delta Alto Lakes Country Club	33° 24.010' N	105° 39.851' W
South Fork	Drop Point	5		33° 19.617' N	105° 42.276' W
South Fork	Drop Point	50	You can # the DP	33° 22.321' N	105° 40.157' W
South Fork	Drop Point	51	You can name theDP	33° 22.918' N	105° 40.401' W
South Fork	Drop Point	52	You can # the DP	33° 23.165' N	105° 40.286' W
South Fork	Drop Point	54	You can # the DP	33° 23.495' N	105° 40.638' W
South Fork	Drop Point	6		33° 19.940' N	105° 42.644' W
South Fork	Drop Point	60	Drop point 1	33° 21.481' N	105° 40.941' W
South Fork	Hazard			33° 24.015' N	105° 42.763' W
South Fork	Hazard			33° 24.116' N	105° 42.206' W
South Fork	Hazard			33° 24.682' N	105° 42.893' W
South Fork	Helispot	1	Call ER direct if landing (security will assist on road guard) 575-630-4258	33° 19.227' N	105° 37.816' W
South Fork	Helispot	10	Approved type 3	33° 19.910' N	105° 43.594' W
South Fork	Helispot	20	Approved for type 3	33° 19.848' N	105° 44.394' W
South Fork	Helispot	30		33° 18.607' N	105° 46.874' W
South Fork	Hot Spot - Spot Fire			33° 19.950' N	105° 46.615' W
South Fork	Hot Spot - Spot Fire			33° 20.560' N	105° 46.915' W
South Fork	Hot Spot - Spot Fire			33° 20.542' N	105° 46.800' W
South Fork	Hot Spot - Spot Fire			33° 20.037' N	105° 46.840' W
South Fork	Incident Command Post			33° 20.925' N	105° 38.860' W
South Fork	Lookout		Lookout Tower	33° 18.283' N	105° 47.145' W
South Fork	Medical	Lincoln County Medical Center		33° 19.346' N	105° 37.845' W
South Fork	Repeater	CMD 10		33° 18.272' N	105° 47.136' W
South Fork	Repeater	CMD 7		33° 23.433' N	105° 48.688' W
South Fork	Repeater	CMD 8		33° 25.896' N	105° 43.875' W
South Fork	Repeater	CMD 9		33° 22.128' N	105° 37.197' W
South Fork	Value at Risk	Substation		33° 21.248' N	105° 38.633' W
South Fork	Value at Risk	Substation		33° 24.265' N	105° 27.786' W
South Fork	Value at Risk	Substation		33° 17.941' N	105° 39.540' W
South Fork	Value at Risk	Substation		33° 16.119' N	105° 42.831' W
South Fork	Value at Risk	Substation		33° 27.932' N	105° 32.357' W
South Fork	Value at Risk	Substation		33° 23.644' N	105° 47.151' W